

GRAHAM ADDS 3 TON TRUCKS

Three Different Wheelbases Offered Public in New Production

A new 3-ton truck designed to fill the demand for a sturdy, speedy pneumatic tired truck of larger capacity than they have been offered has been announced by Graham Brothers, the truck manufacturing division of Dodge Brothers. The new model is offered in three wheelbases, 135 inch for dump bodies, semi-trailers and other utility work, 140 inch for 12 foot bodies, oil tank service, etc., and 185 inch for 15 foot bodies, including moving vans and other open and closed bodies for hauling of more bulky commodities. The price range for the chassis is from \$1,740 to \$1,970, f. o. b. Detroit.

With the addition of the 3-ton truck, Graham Brothers complete line now includes more than forty standard body types on six capacities of commercial cars and trucks and two motor coach chassis, said to meet over 95 per cent of all hauling requirements. In addition, highly specialized and unusual needs are supplied by the company's special equipment division.

Powered with a six cylinder engine having a crankshaft supported by seven bearings, the new 3-ton truck is featured by four speed heavy duty transmission and four wheel Lockheed hydraulic internal expanding brakes. The chassis construction throughout is heavier than any type ever offered by the company.

The equipment is complete in every detail including speedometer, ammeter, oil pressure gauge, water temperature indicator, thermostat, radiator shutters, crankcase ventilator, gasoline filter, air cleaner and oil filter. The cabs have been designed to provide driver comfort comparable with that of a passenger car. Seat backs and cushions are of steel construction, being built over well padded spring frames. The corner posts are of steel to provide sturdiness and strength. The windshields are one piece construction and equipped with automatic wipers. For convenience, the lighting switch is located above the steering wheel.

OFFER TO BUILD ROADS

LIQUIGUE, Chile (AP)—An American firm has made an offer to the Chilean government to reconstruct existing roads and build new thoroughfares in northern Chile. Financing would be done through toll collections.

NETHERLANDS COFFEE MART

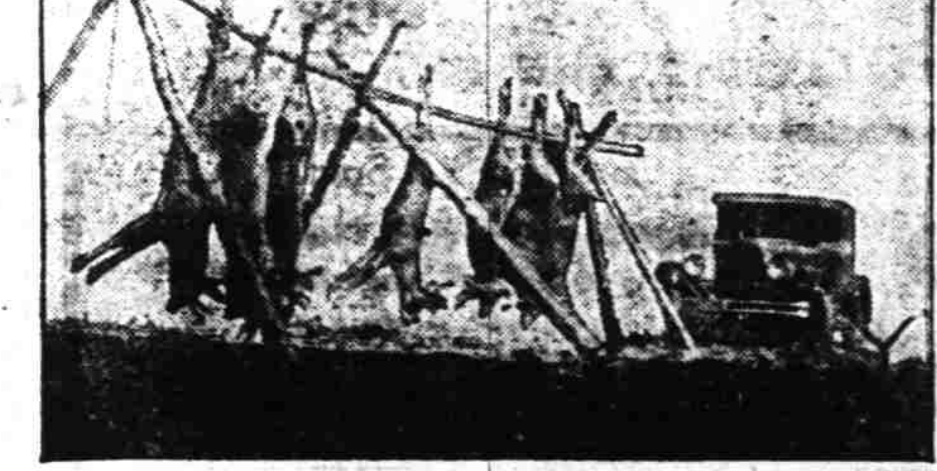
AMSTERDAM (AP)—Although scarcely 500,000 bags of coffee are consumed yearly by the people of the Netherlands, more than 2,000,000 enter the country, which has become one of the leading coffee markets of Europe. Most of it comes from Java, Sumatra and other Netherlands eastern possessions, but coffee from Brazil, Central America, India, Africa and Surinam also is handled.

PLANES RIVAL HUSKIES

NOME (AP)—Airplanes are supplementing, if not supplanting dog teams for winter travel in Alaska. Several aerial transportation companies operating routes from more than 40 landing fields. So much plane travel is planned for the coming winter that traders have refused to contract for salmon, main food of the dog teams believing they will be little used.

Acts by the Baker Chamber of Commerce good will vaudeville troupe and talks by Baker residents and O. W. H. & N. officials featured a recent meeting of the Burnt River Community Club at Huntington.

Reo Wolverine Covers 160 Texas Miles In 152 Western Union Minutes



You Can Get 'Em With A Wolverine

The Wolverine of the woods will tackle any animal of any size. He knows no fear. The Wolverine of the roads will tackle any trail—and get there, too.

The picture above shows a Reo Wolverine in some of the roughest country of Mexico and in front of it are the trophies of the chase—seven deer which fell prey to the unerring aim of Oklahoma City hunters.

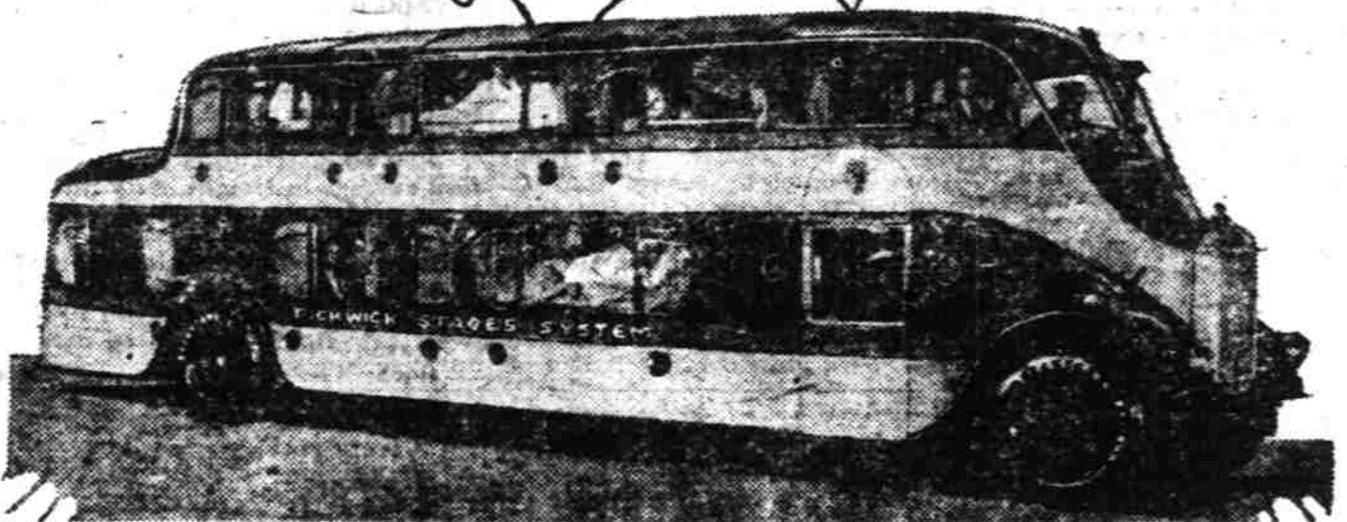
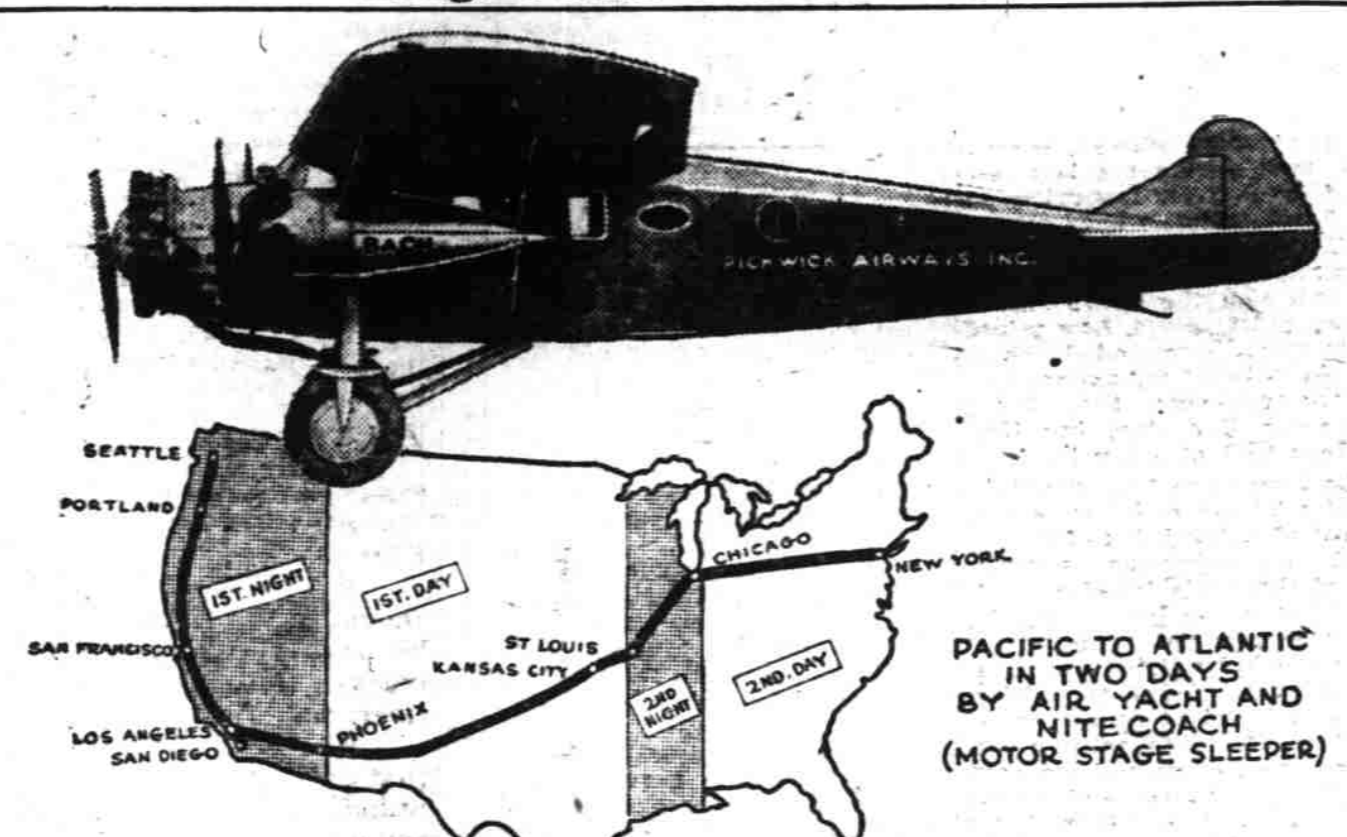
This Wolverine Brougham recently set a new Texas record when it flashed from San Antonio to Eagle Pass—160 miles—in 152 minutes, according to word received from the Reo Motor Car company. Checked out of San Antonio and into Eagle Pass by Western Union, these 152 minutes represent total elapsed time—not a hypothetical driving time. This is an average of 63.12 miles per hour.

Reo officials state that the Wolverine's record run indicates more than the car's ability to travel at high speed. It indicates, they believe, a sturdiness that can stand up under strains of driving with the accelerator pushed against the floor. It indicates the riding and driving ease that makes consistent, fast road speeds possible. It indicates a remarkable facility to turn the speedometer dial from small numbers through the forties, fifties and far beyond—in a very few seconds and it indicates the braking ability that permits fast driving with safety.

Compare the past record of the Reo motor cars and trucks with any and all others. Be sure to balance the scales yourself, and if you haven't driven one of our new 1933 models, just take a turn behind the wheel, you may find it's just the car you've been waiting for. We cordially invite you to try a Reo and make your own decision of its quality and long life record.

Reo Sales & Service
239 to 247 N. High St. Between Center and Chemeketa

Stage-Plane Tourist Line



Los Angeles to Chicago in a day and two nights, with restful sleeping hours aboard a spacial motor stage sleeper—thrilling daylight hours in a tri-motored liach Air Yacht. Such is the program outlined by the Pickwick Airways, Incorporated, to be put into effect as quickly as its fleet of planes can be completed.

Governor Smith Takes Rap at All Opponents In Border State Speech

By PAUL F. HAUPERT
Associated Press Staff Writer
OKLAHOMA CITY, Sept. 22.—(AP)—Carrying his fight for the presidency into the border state of Oklahoma, which is torn by political strife, Gov. Smith last night applied the injection of the religious issue and "whispering" methods into the campaign, defended his record as chief executive of New York, and urged the voters of the nation to make their choice in the November election solely on the ground of what best promotes the interest and welfare of the republic.

In a speech prepared for delivery here in the coliseum, which has a seating capacity of about 10,000, the democratic nominee directed an attack at former Senator Owen of this state, who has bolted the democratic party to support Herbert Hoover, assailed Mrs. Mabel Walker Willebrandt, its assistant attorney general as a "dishonest" campaigner in behalf of Mr. Hoover, and made specific reference to the Ku Klux Klan, whose members, he said, "have the frontory to refer to themselves as 100 per cent Americans."

Straton Avoided
The New York governor, in his advance draft, did not refer to the Rev. John Roach Straton, of New York, one of his most outspoken critics, for whom a place on the platform had been reserved. In condemning some of the campaign methods used against him, Governor Smith declared here was "abundant reason for believing that republicans high in the councils of the party have outmaneuvered a large part of this form of campaign if they have not actually prompted it."

"They may, through official spokesmen," he added, "disclaim official of the government of the state of New York under me suggested to a gathering of the pastors of my church that they do for me what Mrs. Willebrandt suggests be done for Hoover," the democratic nominee quipped. "It is dishonest campaigning. It is un-American. It is out of line with the whole tradition and history of this government, and to my way of thinking, is in itself sufficient to add us up to the scorn of the thinking people of other nations."

Composer Thinks Radio Music Aid

PARIS, Sept. 18.—(AP)—The radio is one of the strongest forces at work for the betterment of music, and will sooner or later raise the musical taste of America, and improve grand opera, says Claude Warford, New York composer and these same people if a promise-making teacher.

Subsurface Profits

Subsoiling came with the "Caterpillar" to mine deep-hidden riches for orchardist and grain grower, with tremendous power and traction to shatter stubborn hardpan deep beneath the surface, to lay away moisture for the rainless day, to speed the sprouting roots to strength, mixing organic matter with the soil, increasing humus and aeration. Now soils have greater water holding capacity where "Caterpillars" have been.

Increased yields of fruit and grain result and the sun drenched, air-slaked humus of the top soil draws upon a deep storehouse of wealth unloosed below.

Loggers & Contractors Machinery Company
PORTLAND SALEM EUGENE



MOONSHINERS HAVE QUEER HIDING PLACES FOR BOOZE

Prohibition Agents Must be Real Sleuths to Uncover Stills Craftily Put in Most Unlikely Places

ALTHOUGH the quality of moonshine liquor is universally bad, and the activities of moonshiners uniform along many lines of law violation, there is one respect in which they are all different. This is the kind of place selected for a still.

Such was the comment of Marion county officers last week in telling of the various raids in which they have engaged. The still might be situated in the underbrush near the house. It might be in the attic. It might be in the woodshed or the barn. During the course of a raid last year the still finally was found under a false floor of the pig pen. In another raid, near Taibott, a loose board was found in a manger. Under this board a ladder led down into an excavation in which the still was situated.

In fact, the officers say, if moonshiners took up some honest profession and used the same brilliancy in it, they would make considerably greater profits. Or if they were as good at other branches of their chosen occupation as they are at hiding their stills they would never be caught. Perhaps some of them are that good.

One fascination feature of the study of moonshining stills and their location, is that the most intricate hiding places, and the most expert methods, probably never have been ferreted out.

Rumors persist of a moonshine and bootleg ring operating in the Willamette valley with headquarters at Portland. Many officers of the law believe that at least one such group, well organized and financed, does exist.

They cannot prove it, of course; if they could it would cease to exist.

Reports have it that local counsel is retained on a permanent basis, men work on a regular wage scale and the output is handled systematically and efficiently. When an employe gets into trouble with the law and he is thrown into jail, his pay goes on. If he can get out on bail the ball is furnished. If he gets off with a fine his fine is paid for him. If a jail sentence is given him his job with the firm is held open, and when he gets out he collects his back pay and goes back to work.

Stills are not always found when the raid is made. There was one case where the still was situated in a large hole under the barn floor. The officers obtained

AUTOMOBILE OUSTS PLANE

TABRIZ, Persia (AP)—Improvements in the road between this city and Teheran have reduced automobile travel time between the cities to two days in good weather. Such travel is popular and a German company which tried to operate an air service over the route found it unprofitable and abandoned the project.

LATAVIA BUYS COINS
RIGA (AP)—The British royal mint has been given an order by the Latvian Cabinet of Ministers for 5,000,000 coins of one and two centime denomination (100 centimes is equal to 12 cents). The coins, to be minted of an alloy containing 95 per cent copper and some tin and zinc, will be used to relieve the present shortage of small coins.

The Best Tire Service That You Can Get

We will not promise to wash your face but we will give you the very best service you can get. If you have a Flat just call our Service Car and we will be on hand in a few moments.

SEIBERLING ALL-TREAD

ZOSEL'S Tire Shop

199 S. Commercial TEL. 471

More Rubber Stronger Cotton and Protected for One Year against all Road Hazards

Now Over 350,000 Owners Are Driving General Motors' Lowest Priced Six

Because Pontiac Six offers infinitely more than other cars of comparable price the number of Pontiacs in use exceeds 350,000.

It is the lowest priced six offering bodies by Fisher with all their advantages in styling, comfort and silence. It is the only low-priced six offering a 186 cu. in. engine with the G-M-R cylinder head. It is the only six of its price combining the cooling advantages of the cross-flow radiator, the driving advantages of foot-controlled headlights and the protection of a co-incident transmission and ignition lock.

It is such features as these which are so impressive when Pontiac Six is compared with any other car of similar price. They typify the exceptional quality and value being built into this low-priced General Motors Six. Come in—and learn how much more you get for your money when you buy a Pontiac Six.

2-Door Sedan, \$745; Coupe, \$745; Sport Roadster, \$745; Phaeton, \$775; Cabriolet, \$795; 4-Door Sedan, \$825; Sport Landau Sedan, \$875; Oakland All-American Six, \$1045 to \$1265. All prices at factory. Check Oakland-Pontiac delivered prices—they include lowest handling charges. General Motors Time Payment Plan available at minimum rate.

VICK BROS., HIGH STREET AT TRADE

Associate Dealers: Benton Motor Company, Inc., Corvallis, Oregon; Byerley Motor Co., Albany, Oregon; Silverton Motor Car Company, Silverton, Oregon; C. J. Shreeve & Son, Dallas, Oregon; T. D. Pomeroy, Independence, Oregon; Fred T. Bilyeu, Scio, Oregon; Henry C. Hollomon, Harrisburg, Oregon; Fred Gooch, Jr., Mill City, Oregon; Elmer Fitzgerald, Lebanon, Oregon; Austin's Service Station, Brownsville, Oregon; H. W. Morris, Waldport, Oregon; A. J. Gilliam, Toledo, Oregon; Frank Miller, Aurora, Oregon; N. J. Arnold, Monmouth, Oregon; Bones Brothers, Turner, Oregon.

PONTIAC SIX
PRODUCT OF GENERAL MOTORS