

WARNING GIVEN ALL TOURISTS

Careless Smokers Advised to Do Their Share in Averting Fires

Careless smokers and campers still continue to be a serious hazard to the national forests of Oregon and Washington, according to a report just issued by the forest service, Portland. In fact, the number has increased, there being 84 per cent more smokers' fires and 22 per cent more campers' fires so far this year as compared with the same period in 1927.

The report shows 462 forest fires attributed to various causes, as against 226 last year. Lightning fires show a sharp decrease, so that the total number of national forest fires this year is only 903, as against 1,133 last year.

Care Necessary

"Because we have had a more favorable fire season this year," said F. H. Brundage, assistant district forester in charge of fire control, "it appears from the figures that many forest visitors thought they didn't have to be so careful. This is not so. Right now the woods are dry and inflammable, and it would just take the right combination of low humidity and a smoldering cigarette to start a disastrous forest fire."

Mr. Brundage pointed out that many people will visit the forests over Labor Day, and urged that they exercise the utmost care with fire, especially cigarettes, matches, and campfires, so as not to bring a happy holiday to a possibly tragic ending. Asked to make a concrete suggestion for the reduction of smokers' fires, Mr. Brundage recommended the following smokers' code as the essence of good woodlandship:

Smoker's Code for Season

"Dangerous to smoke while traveling on forest, brush or grassland. Smoke only: (1) while stopping in a safe place clear of all inflammable material; or (2) during or right after a heavy rain; or (3) inside a vehicle on two-way highways; or (4) above timber line.

"After smoking, put out all lighted material. The law prohibits throwing away any burning matches or tobacco, or other lighted material, in a forest region. For set fires from smokers result from thoughtlessness and carelessness. They are on the increase. Remedy a bad record by following the above code when in the forest region."

Mr. Brundage also added the reminder that camp fire permits are required on national forests. These should be obtained from the local forest supervisor or ranger.

GRAHAM-PAIGE HIGH IN REGISTRATIONS

Graham-Paige averaged seventh place in July registration standings in fourteen of the largest cities of the United States, reports W. H. Trumm, head of the Trum Motor Car company.

Graham-Paige representative here, on information received from Detroit.

In Indianapolis Graham-Paige stood third among all makes, and in Atlanta, fourth. Sixth position was held in Detroit, Cleveland, and St. Louis; seventh place in Chicago, Philadelphia and Butte, and eighth place in Los Angeles, Salt Lake City and San Francisco.

The 50,000th Graham-Paige car was produced August 8, marking a significant achievement by the three Graham brothers. They announced the new line January 7, and up to February 8, produced 850 cars. Since then a continuous succession of new monthly records has brought the total to 50,000 in just six months.

Graham-Paige set a new record for one day's production on August 14, when 516 cars were built in the regular nine-hour working day. Production is being maintained at its maximum to supply a demand that shows no sign of the seasonal decrease usually felt in the industry following the spring buying peak. On the contrary, retail sales gained constantly throughout July, and the week ending August 4 exceeded the best previous record by 220 car sales.

When we think of the tax-free Pacific Spruce corporation during the time when the spruce will be gone, also the corporation, we wonder what will be left for the taxpayers? Stumps and a memory will linger to remind one of the departed. — Yaquina Bay News.

Owner Drives Car Across Continent in 76 Hour Run

Across the continent by automobile in 76 hours and 13 minutes! This is not a mark set in a professional attempt to make a new record, but the astonishing feat of a tool salesman who found it necessary for business reasons to drive his own car from Los Angeles to New York in the fastest possible time.

Racing across country in specially equipped cars, under special police escort and under the most favorable conditions for the sole purpose of "beating time" is now a thing of the past, for Harold M. Fenwick of Philadelphia has established a new record for an owner-driven motor car.

Fenwick was certain his Dodge Brothers Victory Six car, with a mileage of 12,487 miles and which he had driven to the west coast, could turn right around and take him to New York hours ahead of the fastest train schedule. Sharing this idea was his companion, G. W. Brink. The two shook hands and were officially checked out of Los Angeles at 7:47 p. m. August 1 on their way east.

Exciting Experiences

Hair raising experiences intervened until they were officially checked in New York at 3 o'clock the morning of August 5, just 76 hours and 13 minutes later, allowing for the difference in time between the two cities. They had bested the fastest trains by more than seven hours. Their speedometer reading showed they had negotiated 3,272 miles at an average speed of 43 miles an hour. It was then they sat down to write the Dodge Brothers factory their experiences.

Days of preparation and special equipment for cars usually making this run meant nothing to them. Their car was ready as it stood, and were it not for a three-hour delay in Arizona resulting from a wreck on a sharp curve, they would have broken coast to coast records by a wide margin. Up and down mountain roads, across deserts, through mud and rain and in city traffic, the Victory engine never faltered, their report stated.

A Narrow Escape

The drivers had their narrow escape from death in Arizona when they were forced off a mountain road in a collision with an approaching car. Surveying their plight, the men, uninjured, agreed that the two walled Victory body saved their lives. Damage to the car was slight.

AUTOMOBILE COUNT COMPILED BY STATE

A total of 182,783 vehicles were counted by employes of the state highway department at more than 100 different points in Oregon between the hours of 8 a. m. and 10 p. m. Friday, August 17, according to a report prepared by the state highway commission here today.

Of the total number of passenger cars counted 112,417 bore Oregon licenses. A total of 46,512 passenger cars were from other states. There were 2,357 stages and busses, 12,032 trucks of one-half ton and less capacity, 8,132 trucks of more than one-half ton capacity, 619 motorcycles and 711 horse drawn vehicles.

Oregon passenger cars comprised 61.50 per cent of the total vehicles counted. The largest number of cars were counted at the Parkplace bridge, north of Oregon City, 4,338 vehicles passed this point.

GAINES' BODY SENT TO SEATTLE HOME

WALLA WALLA, Wash., Sept. 1.—(AP)—The body of Wallace C. Gaines, who paid with his life at dawn Friday for the murder of his daughter two years ago, will be taken to Seattle Sunday by Frank Novak, Seattle prison evangelist, who was with the condemned man through the last long hours of his life.

Gaines' widow, who had body, decided to leave tonight, supposedly because of her desire to read his last letter, written during the night. She spent the day in the seclusion of her hotel room, refusing to talk to anyone but Novak.

William Gaines, brother of the hanged man left for Seattle early today, exceedingly nervous and bitter. He had steadfastly protested his brother's innocence and fought for his life.

Governor Hartley declined to give Gaines clemency.

Gaines walked stoically to his death, still declaring his innocence.

PONTIAC MAKES SEVEN CHANGES

Oakland Company Announces Numerous Improvements in Models

PONTIAC, Mich., Sept. 14.—(Special)—Oakland Motor car company announce seven improvements designed to make the new series Pontiac Six more powerful, faster and more flexible of operation.

Major changes include a new carburetor, new intake manifold, new air deflector, higher gear ratio, larger tires, smaller wheels, and smart new Duo colors on the sport landau sedan.

Outstanding among the new improvements is a one-inch carburetor of the approved type used on the Oakland All-American six. Not only is it simpler of adjustment and more accurate than the old type, but increased speed, power, acceleration and fuel economy are achieved by its use in conjunction with the new manifold and gear ratio. Connected with the carburetor is a new mushroom type air deflector.

Manifold Change

The intake manifold has been changed to accommodate changes in the carburetor, and the rear axle gear ratio stepped up 4.3 to 1. Marked improvements in every phase of performance is instantly noticeable behind the wheel, with a higher top speed and an ample reserve power at all driving ranges.

With the increase in gear ratio, the rate of piston travel is still considerably less than that of any other car in the low priced six cylinder field. Thus Pontiac retains an advantage it has held since its introduction: minimum wear of moving parts, which means longer life for the car.

Greater beauty and a big car appearance, in line with the current vogue, is achieved by the use of larger 19 by 5 inch balloon tires and smaller wheels with ten sturdy spokes, and a larger seven-and-a-quarter inch hub flange. The larger tires result in greater riding comfort and lessening of tire wear.

New Dress Donned

Simultaneous with these mechanical changes is the announcement that the smart sport landau sedan will take on new dress. The body will be of a dark Standish green Duo, with fenders of lighter Virginia green—a combination similar to that now used on the Oakland All-American cabriolet. Wheels are in natural wood finish.

Special sport equipment, consisting of a trunk rack and six wire wheels with tires, also is available for the first time on a low priced six. Spares are mounted in front fender wells on either side of the car, while non-convulsive chrome plated rims add a brilliant touch of color to the swanky model. New and distinctive bumpers also are available.

In view of the bettered performance and new beauty effected by these changes, it was felt in automotive circles here that the Pontiac Six would take on an added spurt in the record setting pace it has consistently maintained since its introduction.

PACIFIC HIGHWAY BECKONS TOURISTS

(Continued from page 11)

A couple of miles about Martinez and see the old mansion landmark on its sunny knoll, surrounded with rare trees from far climes which John Muir cared for long and lovingly.

Regional Recreation

Salmon and striped bass are now running at their best near the mouths of the great rivers bridged by the Pacific highway. Fishermen among the army of motorists invading the north find the Fraser river between Vancouver and New Westminster a piscatorial placer mine, yielding rich returns. Above Astoria, near Longview, the Columbia bids Waltonites to tarry and take their toll.

Striped bass are famous for their preference for the delta of Sacramento river and the Napa near Carquinez Straits. Marvelously have they multiplied since 1875 when the initial number of 135 were planted near Martinez. Subsequently, Santa Ana river, near Newport Beach, Morro Bay, in San Luis Obispo county, and Monterey Bay were stocked with the progenitors of the titanic "stripers" now so plentiful today. Many, weighing from 50 to 60 pounds, have been caught in recent years in the brackish waters of California's Inland Sea.

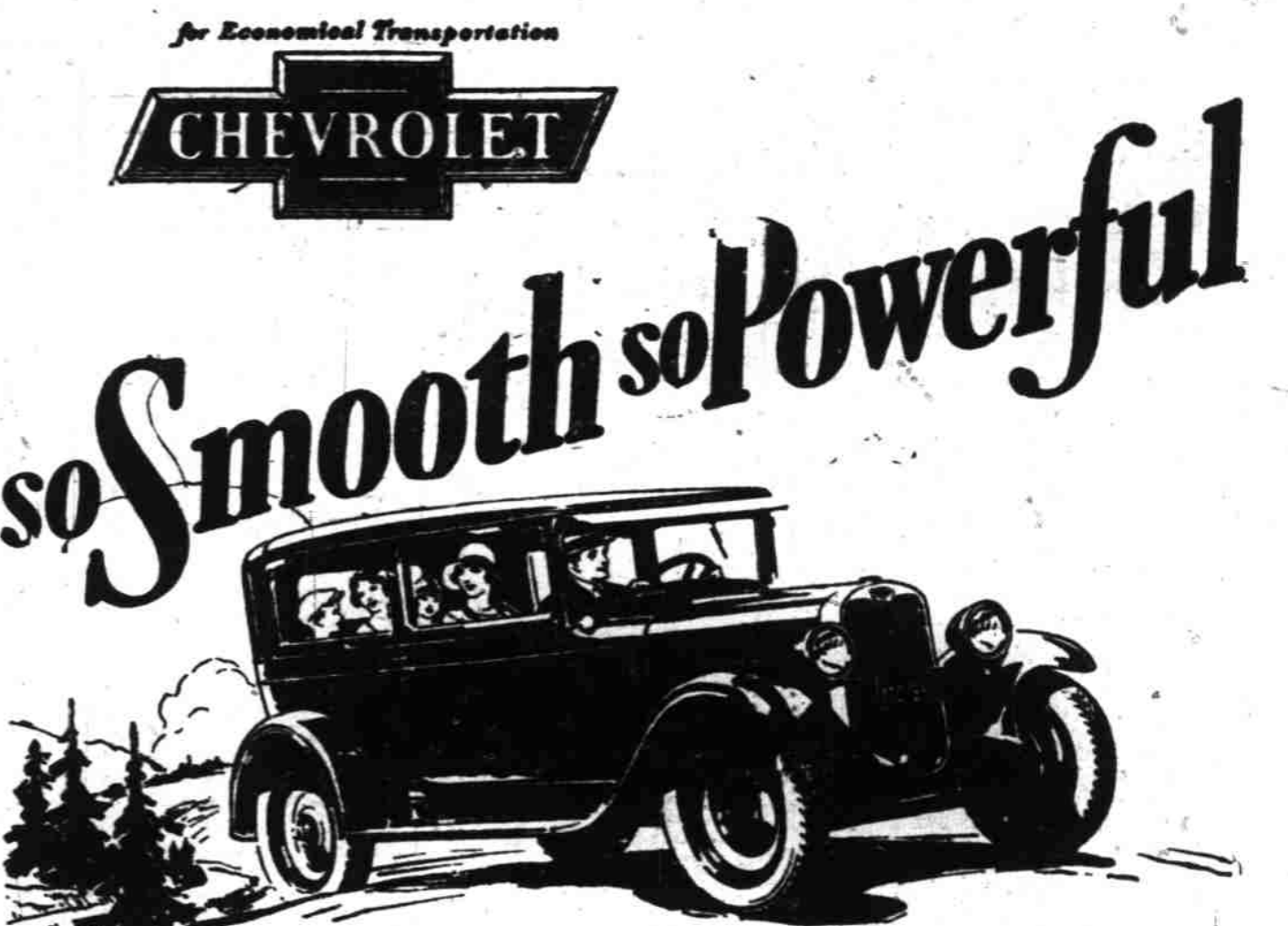
Labor Day promises to be doomsday for more than a thousand bucks in the coast range from Ventura to Tehama counties. Willows, Colusa county and Santa Maria in Santa Barbara county, are reported to be leading centers from which deer hunters head for the high ranges beyond.

From ninth place in 1926, the Oakland Motor Car company has steadily grown until at present it is among the first four leaders in the industry in point of volume.

Thirteen new toggle presses are being added to the sheet metal plant equipment of the Oakland Motor Car company. Two of these are the largest of their kind in the world, exerting a pressure of a thousand tons at a single stamping.

A new sheet metal storage plant 54 by 300 feet in size is now under construction by the Oakland Motor Car company. When completed in September, it will serve to stabilize manufacturing operations in the modern Oakland and Pontiac factories.

Have you had the transmission and differential inspected recently for correct grease levels? The should be washed out and re-filled with entirely new grease at least once a season in addition to regular greasing.



First Choice of the Nation for 1928!

The COACH \$585

The Touring \$495
The Coupe \$595
The 4-Door \$675
The Convertible Sport \$695
Cabriolet \$715
Limousine \$750
Truck \$520
(Chassis Only) \$375
(Chassis Only) \$375
All prices f.o.b. Flint, Michigan.
Check Chevrolet Buickover Prices They include the lowest handling and shipping charges available.

Although the Bigger and Better Chevrolet offers elements of beauty never before thought possible in a low-priced automobile... although it offers the features of advanced design and completeness of detail demanded in the world's finest cars... one of the fundamental reasons for its tremendous success is found in its amazing performance—

—so smooth, so powerful and so unfailingly dependable that it has literally captivated more than three-quarters of a million buyers since January 1st! Come in and drive this sensational car! Drive it as long and as far as you like—in traffic and on the road. We know that you'll say that no other automobile in all the world can give you so much—at prices so amazingly low!

Douglas McKay Chevrolet Co.
430 N. Commercial Street, Tel. 1802

Dallas Chev. Co., Dallas
Geo. Dorr, Woodburn

Associate Dealers:
Wm. Predeek, Mt. Angel

Ball Bros., Turner
Hallady's Garage, Monmouth

QUALITY AT LOW COST

NASH REPORTS PEAK DEMANDS

(Continued from page 11)

In commenting upon the spectacular success of new "400" series, Mr. Pettyjohn said: "The steadily growing demand for the new series cars and the voluntary commitments the company is receiving daily from owners relative to their performance, makes us feel that the Nash factory is going to continue at this record business peak for some time to come."

The plans for September call for still further increases in production, consistent with the increased demand.

GREAT CHALLENGE SALE

We don't know how all the people that need tires are going to be able to get served today, but we are going to do our best and take care of anybody that comes in or phones us for new tires. We will take prompt care of all mail orders. We have done a big business during this Challenge Sale and we want everybody to profit by these wonderfully low prices. Never before have we been able to offer such low prices on such high quality tires as Firestone Gum-Dipped Balloons—the tires that hold all records for speed, safety, endurance and economy. And don't forget every tire is guaranteed for the life of the tire against any and all defects.

Firestone Gum-Dipped TIRES

Guaranteed for Life against any & all defects

30x3 1/2 Reg.	\$7.95	35x5	\$29.15
30x3 1/2 Ex. Size	9.05		
STRAIGHT SIDE			
30x3 1/2	11.40	4.40x21	10.00
31x4	14.25	4.50x21	11.15
32x4	15.15	4.75x20	12.55
32x4	15.90	5.00x20	13.45
32x4 1/2	19.95	5.00x21	14.00
33x4 1/2	20.75	5.25x20	15.45
34x4 1/2	21.45	6.00x20	18.90
35x5	27.15	6.00x21	19.50

OLDFIELD

We are selling more Oldfield Tires every day because they are the only first-grade, fully guaranteed, standard tires that are selling for so little money. Look at the prices and buy today.

30x3 1/2 Reg.	\$4.05	29x4.40	7.90
30x3 1/2 Ex. Size	6.75	29x4.50	8.85
		29x4.75	10.45
STRAIGHT SIDE			
30x3 1/2	8.50	30x4.75	10.65
31x4	11.70	30x5.00	11.90
32x4	12.35	31x5.00	12.25
32x4	12.95	30x5.25	13.40
34x4	15.50	31x5.25	15.90
32x4 1/2	17.25	32x6.00	18.10
32x4 1/2	17.00	32x6.00	18.30
34x4 1/2	18.65		
35x5	24.10	OLDFIELD TRUCK TIRE	
35x5	24.95	30x5	\$1.15
		32x6	\$3.55

COURIER

Positively the greatest buy at these prices—guaranteed for life against any and all defects.

30x3 1/2 Reg.	\$5.55	BALLOONS	
30x3 1/2 Ex. Size	5.75	29x4.40	\$ 6.70
31x4	9.35	30x4.50	7.30
32x5	9.90	31x5.25	10.95

AIRWAY

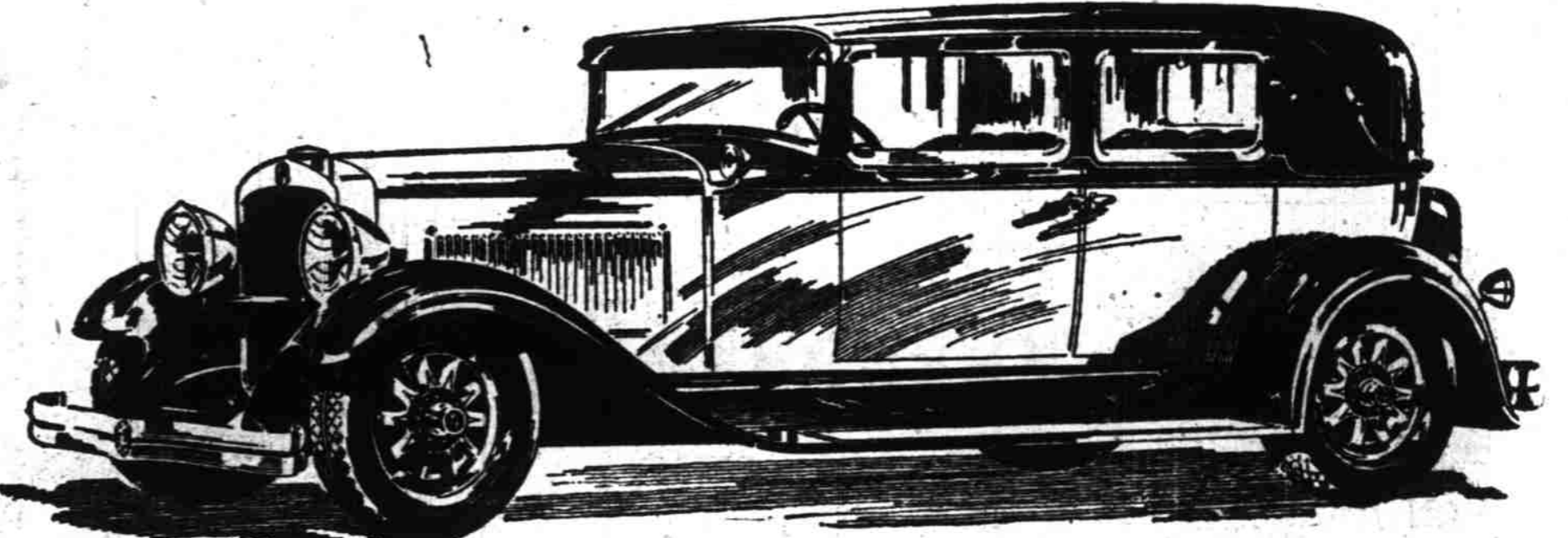
You can't beat the price for the quality that is in these tires. For light cars.

30x3 1/2 Reg. Cl.	\$4.20	29x4.40 Balloon	\$5.25
-------------------	--------	-----------------	--------

PARKER TIRE COMPANY

Court and High

THE WORLD HAS A NEW AND FINER MOTOR CAR



We'll leave it to you—just look at the body designs of the other new cars, then look at the Nash "400" Salon design. The "eyes" will be for Nash.

NASH "400"

Leads the World in Motor Car Value

OTHER NASH FEATURES—NO OTHER CAR HAS THEM ALL

Twin-Ignition motor	High compression	Salon Bodies	Short turning radius
12 Aircraft type spark plugs	New double drop frame	Torsional vibration damper	Bijur centralized chassis lubrication
Houdaille and Lovejoy shock absorbers (exclusive Nash mounting)	Aluminum alloy pistons (lower Strats)	Longer wheelbases	Nash-Special Design front and rear bumpers
	7-bearing crankshaft (hollow crank pins)	Electric clocks	

F. W. PETTYJOHN CO.
365 North Commercial Street
"AFTER WE SELL—WE SERVE"
Telephone 1260

NASH SERVICE

By a Nash Specialist

If your Nash needs attention bring it to us for correction. We have spent seven years in the service department of the Nash Motor Car Co. We should like the opportunity to fix up your Nash... our prices are reasonable.

R. F. NATHAN
Nash Service Exclusively
Phone 2881—Salem—641 Center St.