

# STORM MOVES INTO CAROLINA

## Florida Hurricane Sweeps Across Georgia With Dissipated Strength

ATLANTA, Ga., Aug. 11.—(AP)—The Carolinas today felt the effects of the tropical storm as it moved slowly up the Atlantic seaboard while sections of Florida and Georgia continued to wrestle with its aftermath.

A toll of four dead, several injured, scores homeless and much property damage marked its progress late yesterday and last night through the rich Piedmont section of North Carolina and South Carolina. Tonight flood conditions caused by unprecedented rains menaced several communities, crippling communications, disrupting power service and paralyzing railroad and highway traffic.

Cities in south Georgia visited by the storm today counted the cost in thousands of dollars damage done to growing crops, highways, railroad trackage and public utilities.

### Streams Swollen

Rivers and streams had swollen to the highest stages on record in many places and isolated half a dozen communities.

In Florida, where the storm's greatest damage was wrought, a new area of approximately 20 miles from Ingham to the west coast was flooded today when officials of the Florida power corporation's dam near that place opened the flood gates to relieve pressure against the structure from the large volume of water poured into it by the swollen Withlacoochee river. Two hundred persons living in the affected territory were warned last night to evacuate their homes and were believed to have escaped.

### Storm Warnings Issued

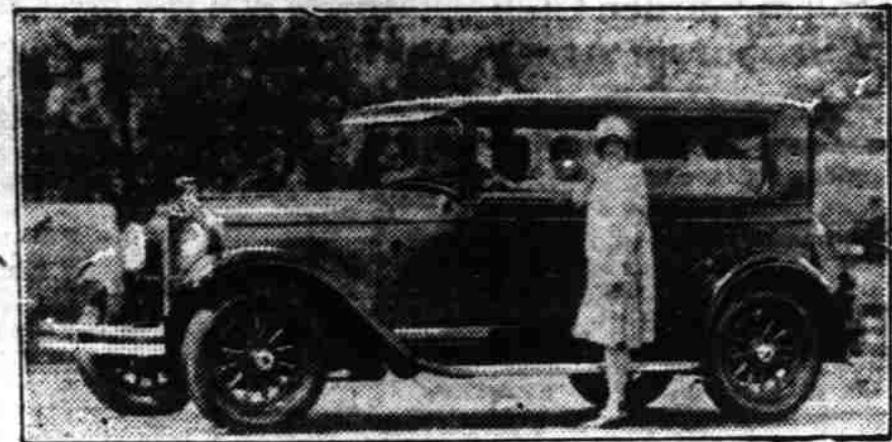
As the disturbance passed over into western North Carolina and Virginia during the day the weather bureau ordered southwest storm warnings posted from Washington to Norfolk and south coast warnings from Norfolk to Delaware breakwater, saying that strong winds were in prospect. At the same time the center of a new tropical storm approaching from the West Indies temporarily was "lost" by the weather bureau which, however, reported that still another probably might be located south of Jamaica. Caution was advised: all vessels in the north and central portions of the western Caribbean.

### Central and Southern South Carolina apparently were the hardest hit, high winds wrecking a number of scattered homes in that area and torrential rains drenching most of the territory. Most of the injuries occurred near Batesburg, in which vicinity seven persons were reported hurt by flying debris and in the wreckage of houses.

### Crash Kills One

Jasper J. Harlitz died of injuries when his home at Batesburg collapsed in the gale, an unidentified man was found dead on the highway near Cowpens and Grover Hollabough, a southern railway freight conductor, was killed when a high tension wire fell across his cab. The other victim was a 12 year old negro girl who was killed when her home was demolished near Union.

Spartanburg was the greatest sufferer among the larger communities in the storm's path. More than seven inches of rain fell there in 24 hours, sending creeks out of banks and flooding cotton mill towns of Beaumont and Arkwright, nearby, from which residents were forced to flee. In the city proper, some buildings were



Oakland All-American Six Sedan

# CRITICS VIEW TEXT OF TALK

## Comments Offered Both for and Against Mr. Hoover's Address

WASHINGTON, Aug. 11.—(AP)—Voluntary expressions on the address of Herbert Hoover accepting the republican presidential nomination were quickly forthcoming in the capital tonight from both republican and democratic ranks.

Senators Smoot of Utah and Jones of Washington spoke up with unstinted praise on behalf of the republicans. Senators Pittman, of Nevada and Fletcher of Florida were the critics for the democrats.

Mr. Hoover's acceptance speech is in a class by itself, said a statement by Senator Jones, "and is a wonderful message to the American people, regardless of parties. It deals with human issues and problems of the campaign in a genuinely human way. It is frank, clear, concise and appealing. It bespeaks the honest, frank, earnest, sincere man of broad vision and world wide experience. It places humanity above everything else. It will be read from beginning to end by every voter in the land who can read."

### Takes Backhand Slap

Senator Pittman, who was chairman of the platform committee of the democratic convention and who is regarded as one of the democratic spokesmen, issued this statement:

"It is an able message. It is the best defense of eight years of republican administration that

undermined, basements flooded and gas service interrupted.

### Train Service Broken Up

Train service throughout the affected area was badly delayed and highway travel in many sections was blocked by washed out roads and bridges. A southern railway train, due at Columbia at 10:30 p. m., last night from Greenville was marooned at Pomoria all night and held up indefinitely due to a washout on the line.

The southbound New York-Atlanta airmail was put on a train after the night carrier plane, which had been held at Richmond, Va., until daylight, was forced down in a field near Greensboro, N. C., today and stuck firmly in the mud.

Morganton, Marion and Malden, in the vicinity of Hickory, N. C., were isolated today and Hickory was depending for its water supply on three emergency reservoirs after its water works pumping station had been flooded by a four hour cloudburst during which 10 inches of rain fell. Charlotte received 3.48 inches of precipitation before the rain stopped at noon today.

# WOMEN TAKING LEADING PLACE

## Important Part Taken in Notification Ceremony for Herbert Hoover

By MARY BAINBRIDGE HAYDEN, Associated Press Staff Writer

STANFORD UNIVERSITY Stadium, Calif., Aug. 11.—(AP)—Women, both those of California and of other states, east west and south, had an important part in the notification of Herbert Hoover today that the republican party has made him its standard bearer.

They predominated among the thousands gathered in the stadium and evidenced a far greater degree of enthusiasm than the men. They also had membership on the notification committee and on the republican national committee delegation gathered in the stand.

Both their enthusiasm and their participation were welcomed by the nominee, but in his acceptance address he went beyond that, especially commending to the women that they not only go to the polls themselves, but assist in getting out the vote.

High Standards Noted  
"The participation of women in politics means higher political standards," Hoover said at one point, "if they could apply their higher sense of service and responsibility, their freshness and enthusiasm, their capacity for organization to the problem of getting out the vote it would become an issue of profound patriotism."

By these statements, the nominee endorsed in principle the educational campaign carried on by the National league of women voters, the general federation of women's clubs and similar organizations. Going a step further, he made it clear by repeated declarations that he regards the influence of women as of the highest importance in keeping the moral and spiritual progress of the nation abreast of its economic development.

Supporters Active  
This idea already has taken root among the women organizers here in California and particularly in the towns adjacent to Hoover's own home. These have been busy for weeks conducting a house to house campaign to enroll the women vote and their efforts already have met with success in increased registration.

Republican party leaders have established separate women's headquarters in San Francisco and have brought to the coast the plans to reach the "non-voting home maker" that Mrs. Hert, vice-chairman of the national committee, launched at the eastern and mid-western organizations meetings. Active work by innumerable small Hoover women's clubs is already under way.

### Leaders Gather

Leading women from most of the mountain and Pacific states were here today to exchange views with those who came from two of the eastern battlefields, Rhode Island and North Carolina, as to the best means for carrying the campaign "into every home."

Mrs. Mary Elizabeth Sharpe of Rhode Island and Mrs. W. E. Kenner, national committee woman from North Carolina, reported

## Illini Coach



Carl Landgra, former Chicago Cubs pitcher who helped that team win two world series. In 1905 he was the third best pitcher in the National league. He coaches the University of Illinois baseball team which will play the Salem Senators here Monday.

## Willamette Grad Now Reporter on Paper in Boston

Victor D. Carlson, who for more than a year was engaged in newspaper work in this city, has become a member of the news staff of the Boston Transcript, according to word reaching Salem yesterday.

Carlson attended Willamette university, graduating in 1927, and was editor of the Willamette Collegian in his senior year.

He left Salem early this summer and made his way east by automobile, taking the far southern route. On the way he went through Idaho, Utah, Colorado, New Mexico, Texas, Alabama, Mississippi, Louisiana, Florida and nearly all the eastern coast states up to New England. He was present at the democratic national convention at Houston.

unprecedented enthusiasm for the republican candidate in their states, and told of the organization there of women's campaign bureaus and speakers groups.

### Wet Sentiment Fought

The western women leaders here today, particularly those from San Francisco and Washington, expect to concentrate on a hard fought campaign because of the wet sentiment they have to meet. Women from Oregon and Idaho and Colorado were especially optimistic.

This will be a highly political week-end for California women, and Palo Alto was full of talk among visiting women of the organization meeting to be held in San Francisco, when fully a dozen national committee women are expected to be ready to round out their final plans for the women's campaign. It is thought that all those who did not come on for the notification ceremonies today will come here to pay their respects to their candidate for "First Lady of the Land."

# LAKEVIEW BLAZE

## DAMAGE IS \$10,000

LAKEVIEW, Ore., Aug. 11.—(AP)—Fire which started in a woodshed in the rear of the Lake County Examiner office yesterday noon caused damage to the newspaper office, the A. L. Thornton Drug store and the Bilkington Varietizing store, amounting to \$10,000.

The fire broke out while an employee of the newspaper was melting metal. The blaze from the ignited waste paper near it and within 30 seconds the entire rear of the building was a mass of flames.

For a time it looked as if the entire block, in the heart of the business district, was doomed, but the volunteer fire department succeeded in halting the flames. The principal damage to the Examiner plant was confined to the building. Machinery and equipment were slightly damaged but not beyond repair. The heaviest loser was the drug store with a loss of building and stock estimated at \$6,000.

## THOUSANDS ATTEND BIG STORE OPENING

Visitors numbering more than half of Salem's population looked over Montgomery Ward & company's new store Saturday in response to the invitation to inspect the establishment and merchandise on the first day that it was open for business.

An accurate count kept at the entrance showed after the doors

were closed at 9 p. m. that 15,396 persons had visited the store. It was reported by R. R. Lyons, manager.

The store was literally packed with people through the midday hours, but it was difficult to estimate the number that were inside at any one time. Much interest was displayed in the attractive interior and in the remarkably complete stock of goods carried. The store is in the new Cross building on North Liberty street near Chemeketa.

"Taxi, sir?"  
"Yes, yes; where's your cab?"  
"Sorry—I'm just checking you on the trade to see if it's a good business for me to get into."  
Judge.

The New Oregon Statesman has gained 584 subscribers in 10 days.

## Three Features Not to be Overlooked



- 1—MORE RUBBER. Just note the tread rubber on a Seiberling tire.
- 2—STRONGER COTTON. Stronger cotton is a big item in the service of any tire. Seiberlings have stronger cotton.
- 3—PROTECTION. Seiberling tires are protected for one year against all road hazards at no extra cost to you.

# ZOSEL'S TIRE SHOP

198 S. Commercial St.

We have the best equipped vulcanizing and repair department in the city. We also give roadside service. If you have a flat call 471 and our car will call.

To All Owners of  
**DODGE BROTHERS MOTOR CARS**  
-PAST, PRESENT AND FUTURE  
by  
**WALTER P. CHRYSLER**

You, more than anyone else, are entitled to know the purpose behind our recent acquisition of the assets and facilities of Dodge Brothers, Inc.

For upon that purpose depends the security of your investment in Dodge Brothers products.

In acquiring Dodge Brothers, Inc. for the Chrysler Corporation, we have secured one of the largest and most modern automobile factories in the world and with it an organization of exceptional ability.

We intend that these facilities shall be utilized to increase the value and quality in Dodge Brothers cars and Graham Brothers Trucks and Motor Coaches.

We have secured, in addition, a dealer organization that has always been recognized as one of the finest in the industry.

It is our intention to deserve the continued loyalty of this group of substantial, progressive merchants by making it possible for them to enjoy increasing prosperity through the sale of Dodge Brothers products.

We have secured, moreover, that which transcends in importance either Dodge Brothers superb plant equipment or Dodge Brothers splendid dealer organization. For we have become the lawful heirs of Dodge Brothers Good Name, with all the solemn obligation which that inheritance implies.

We have become the trustees of Dodge Brothers good faith to their customers, and it is our purpose to execute that trust with fidelity.

The priceless identity of all Dodge Brothers products will be preserved—as well as the sound policies that have made the words Dodge Brothers synonymous with Honest Value and Dependability.

Dodge Brothers Works will continue to produce Dodge Brothers Motor Cars and Graham Brothers commercial vehicles. Dodge Brothers dealers will continue to sell and service them.

The men to whose capable support the success of the Chrysler Corporation is due, unite with me in pledging perpetuation of Dodge Brothers ideals, to the end that a Good Name may be made still better.

*W. P. Chrysler*  
President Dodge Brothers Corporation  
Division of Chrysler Corporation



All Kinds of Service  
At Any Hour  
Just Phone 44



Open 8,760 Hours Each Year  
(That means we never close)

'Jim' "Bill"  
**Smith & Watkins**  
The Station with a Clock Center and Liberty Sts.

# Another Record Month




July Sales Greatest of Any Month In 18 Years

AGAIN in July—when motor car sales generally slacken—Graham-Paige broke all sales records for any month in eighteen years; the last week in July being the greatest week in the company's history. And—for five consecutive months, Graham-Paige has established new all-time sales records.

Five chassis—sixes and eights—prices ranging from \$860 to \$2485. Car illustrated is Model 614, five-passenger Sedan, with 4-speed transmission, (standard gear shift), \$1295. All prices f. o. b. Detroit.

Joseph G. Graham  
Robert C. Graham  
Ray A. Graham

# Trumm Motor Car Co.

447 CENTER STREET TELEPHONE 959

# GRAHAM-PAIGE