

Small Family Cottage for a Narrow Lot



THE CREE—DESIGN A631

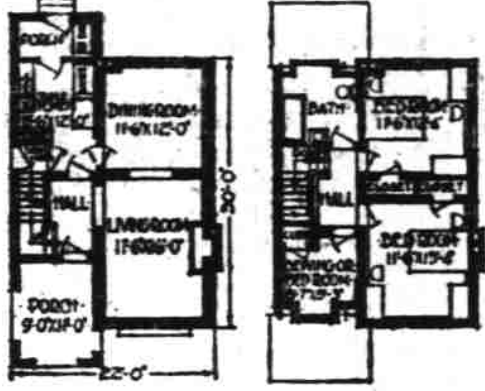
ESPECIALLY suited to a narrow lot this little cottage, English in type, will always prove to be a haven of comfort and convenience for a small family. It is one of those exceptions in the really small home where is found good architecture, excellent interior arrangements, instant appeal, yet moderate cost. It is built of common brick in running bond, with the window sills also of brick laid on edge. Like-wise the porch steps are of brick. It is a brick house with all that distinction means in moderate upkeep cost and long life.

Like all English type cottages this one will require a considerable dressing of shrubbery if it is to appear at its best. A wooded setting would be most desirable but it is far from being imperative. Here only the usual everyday shrubs were used but a very pleasing effect was attained. A few evergreens, tastefully placed, will prove their worth in completing the ensemble.

The Common Brick Manufacturers' Association, Cleveland, Ohio, can furnish complete drawings for this design. Leaflet on brick construction sent upon request.

In its interior arrangement it is also a decided departure from the usual. From the living porch one enters a cozy hallway from which the stairs lead to the second floor. One may go directly into the kitchen from the hallway and thence into the dining room without having to pass through the living room at all. Or he may go directly through the living room. Both of these rooms are large and well lighted, the living room being supplied with a broad open grate. The lower floor plan is very convenient.

Two sleeping rooms, each having two windows, ample closets, and being of good size, are on the upper floor, together with the bath and another small room, lighted by a dormer window, which could be used for either a bed room, sewing room or children's play room. All the available space is utilized and the home is really very complete. It should be very attractive to the man of moderate means.



FIELDS TELLS HOW NEW VOGUE STARTS

Chrysler Combines Ensemble Into Coordinated Whole, in '75' and '85'

In their new '75' and '85', Chrysler executives believe they have introduced an entirely new style which will be the vogue of the future for all motordom. J. E. Fields, vice-president in charge of sales, points out that every line, arc, oval and curve has been blended into a body ensemble that has never been achieved in any other car. Through study of the Greek theory of dynamic symmetry, plus known supplementary modern laws, has resulted in a co-ordination of the car's visual picture that is absolute, he says—a result in motor car beauty and symmetry never before achieved.

Chrysler body design experts have devoted the greater part of three years in their effort to overcome difficulties that heretofore have proved insurmountable. They have combined, for the first time, the entire ensemble of a motor car into a co-ordinated whole. During all this period they have worked with the idea in mind finally of producing a car that would forever re-style all motor car styles, giving the public a freshness and beauty in design that would be lasting.

"There is no more reason why a motor car should lack any of the virtues of gracefulness, artistry or beauty than there is why fine furniture should lack them," says Mr. Fields. "With a definite and thorough understanding of the basic fundamentals, there is no limit to the achievements possible to body designers.

"Chrysler engineers, in the new '75' and '85', have attained a goal in beauty, style and artistry that is absolute. It has given the public something finer in artistry than has ever been available heretofore because it has, first of all, gained a definite and thorough understanding of body designing's basic fundamentals, and has followed these principles through to an accomplishment that is brand new and wholly correct.

"That is why I say that Chrysler has achieved a new style which will be the vogue of all motordom during the years to come."

MAGNET HEAVIER THAN LOCOMOTIVE

BELLEVEUE, France, July 27.—(AP)—"The world's largest electro-magnet," weighing 120 tons,

has been constructed at the national research and invention bureau of the Academy of Science. The giant magnet weighs ten tons more than the world's largest locomotive. In its construction 2700 separate pieces were assembled.

It is supported on huge pillars, and beneath it was dug a subterranean chamber 10 yards deep to maintain a constant temperature. The invention will provide not only a much larger magnetic field than was heretofore possible, but one which is constant for several hours and which will be manifest at a distance of several dozens of cubic centimeters. It will permit research in the general fields of light, electricity and radioactivity.

GALLO-ROMAN VASE DUG UP IN FRANCE

BLAYE-GIRONDE, France, July 27.—(AP)—A thin glass vase of the Gallo-Roman period said to be unique in the world has been found in excavations near Portiers. It is in the possession of Professor Henri Dezouche of the College Universitaire here.

The vase, in good state of preservation, shows two bas-reliefs. One is a chariot race, the other a gladiatorial combat. It was discovered in an old Gallo-Roman burial ground, near the temple of Mercury on the old Roman road from Portiers to Angers.

The excavations revealed 32 sepulchers containing a variety of objects dating probably to the close of the first or beginning of the second century.

REDECORATING WITH COLOR INEXPENSIVE

Sensible Solution to Costly Urge Which Comes This Time of Year

By JANE STEWART

About once a year, usually at this time, comes an urge to redecorate. An impulse, however, which suggests the expenditure of a lot of money. One thinks in terms of new chairs, new this, new that, when the sensible solution is merely to repaint. By this path it is possible to diffuse color throughout the home—color which gives life and spirit to a room, individually and allurement. By means of color alone there can be a complete transformation, and paint has been an important medium in introducing it in decoration.

No one would think of buying a new car because the old one was somewhat scratched (that is if the motor were good and the lines in fashion.) It goes to the shop for refinishing, and continues to be serviceable and smart for at least another season.

And so with a room. If the furniture is standing on all four legs, not too ugly and ungraceful, it has possibilities. The color you use in redecoration will determine whether the room is a success or not, much more than the style of furniture. A warm, cheerful color scheme can hide a multitude of sins, by virtue of pleasing the eye, which will investigate little further. Many a drab little feminine face has been brightened up by a powder frock, or a crimson hat—so why not a room?

"To capture the charm of color in your home," says a noted interior decorator, "to bring life, new beauty to familiar rooms, and to combine the colors so skillfully that each room becomes a perfect thing, a harmony—that is the modern magic of interior decoration."

Pleasing color effects cost no more to achieve than dull drab tones. A chair painted a delicate green is certainly more appealing, if combined properly with other things, than one painted a muddy brown.

The walls which for so long, unless expensively paneled in wood, were a minor consideration in decoration, are breaking forth in interesting painted finishes in soft colors. It is possible to introduce color to the floors by means of a stencil border, or a decoration of some sort. And furniture of all types is adaptable to paint.

It is fascinating to experiment with color in your home, and with the proper knowledge, or natural feeling for the individual characteristics of color you can secure charming and delightful results. With the pastel shades, for example, we associate delicacy and femininity; with brilliant colors, vitality and gaiety; while subdued colors suggest quiet. For instance, with yellow, there is a feeling of sunlight. It is an excellent color to use on walls for enlivening sunless rooms. Green has the quality of both light and coolness.

A bedroom is a good place to start with as color may there be used in profusion without a too startling result. However, it might be well to follow the few simple rules. Select your colors according to a room's exposure and the color scheme of the adjoining room. One color should dominate, another color should relieve, and several values of a third color should supply accent.

From the experience gained in decorating the bedroom you can then progress further until the living room, kitchen and bathroom are gradually transformed with color schemes relating to the room's purpose. Not only does paint impart beauty to the surface on which it is used, but it also adds greatly to its wearing capacity. Too, it may be frequently and

easily cleaned with a damp cloth, losing none of its original brilliance and attractiveness.

California Wine Selling In Argentina Hostelties

BUENOS AIRES, July 25.—(AP)—Argentina may know that there is such a thing as prohibition in the United States, but California wines are on the wine card of the hotels just the same. There are good native wines in the Argentine, there are others imported from France, Italy and Spain, and from the United States, if the wine cards can be believed.

This latter category comprises only three varieties, claret, superior, burgundy, and—shades of Savarin—Chateau Yquem, all from California.

PEACE DECLARED AHEAD IN MEXICO

Political Crisis Passing Off Without Serious Conflict, Word

MEXICO CITY, July 27.—(AP)—Prospects for a peaceable solution of the political crisis resulting from the assassination of President-Elect Obregon, appeared brighter today.

Obregon leaders voiced their confidence that President Calles was making every effort to trace down those responsible for the slaying and to bring them to justice. Aaron Saenz, governor of Neuva Leon, and one of the acknowledged chiefs of the Obregon followers, declared that his partisans would support the president. Governor Saenz has been mentioned as the most likely candidate for the provisional presidency when President Calles' term expires December 1.

His support of Calles therefore is considered significant and has revived the idea that the president may succeed himself provisionally if a way can be found under the constitution.

MINISTER'S LOVE AFFAIRS RELATED

Church Janitor Declares He Peeked Through Keyhole Into Study

LOS ANGELES, July 27.—(AP)—A janitor's story of peeping into the study of Dr. Frank Dyer to see the pastor and a woman there enlivened today's testimony in the court airing of the battle for control of the Wilshire avenue congregational church.

The janitor, Frederick Murray, said he was passing the door of the study one evening and finding the door ajar, peeped in and saw a woman lying on the sofa. He said the pastor of the church was sitting at her feet with his hand on her dress and was leaning over her. The witness testified that he knew Mrs. Dyer and that the woman on the couch was not the pastor's wife.

During the day's trial session, through which one faction, led by the board of trustees of the church, seeks to oust Dr. Dyer and gain control of the church, and its finances, another woman witness testified that the pastor had attempted to embrace her in the church chapel. She was Mrs. Elsona W. Mills, former organist of the church.

Compactness Is Feature of Home Plans



PLAN NO. 405

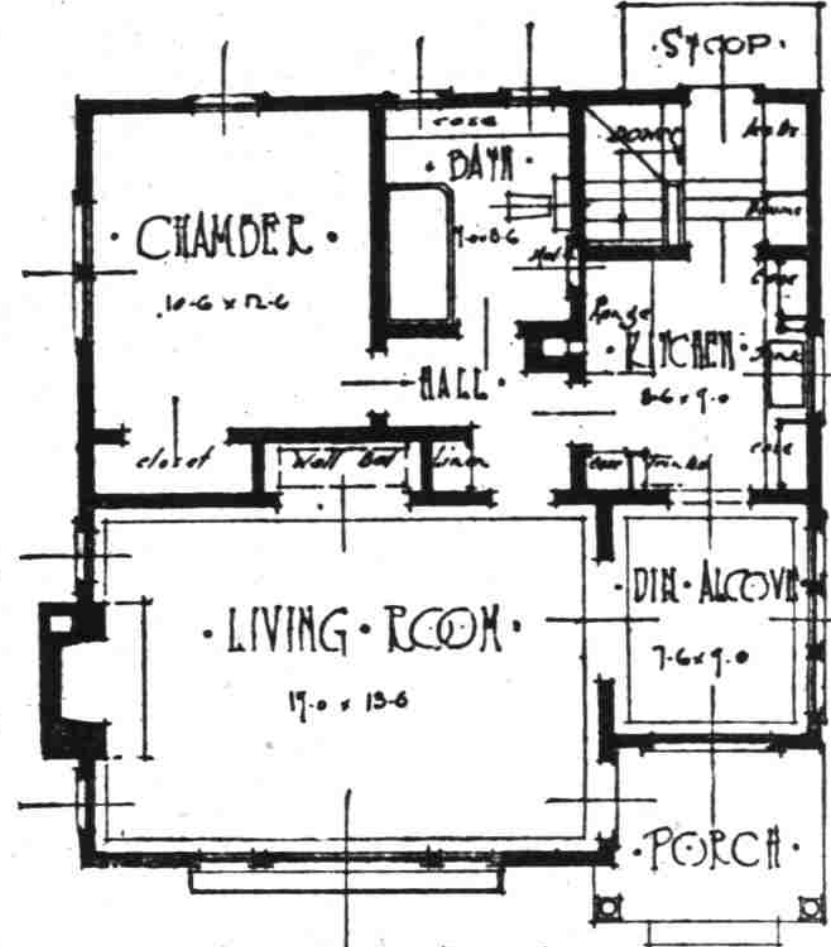
With a ground space of 23 by 30 feet, today's house plan is one ideally adapted for a small town lot or for use as a cottage at the beach.

While but one bedroom is provided for in the plan, a wall bed in the living room is an auxiliary chamber for emergency use.

One of the features of the house is its general compactness in the arrangement of the kitchen. This room is 8 ft. 6 in. by 9 ft. and is designed for use with the minimum amount of walking by the housewife. It will be noticed that the sink is directly under the window where ample light is provided for such culinary operations as are conducted in the sink or on the adjacent drain boards.

The dining alcove is adjoining the kitchen and at the front of the house. The kitchen, dining alcove and enclosed back porch with a built-in ice box, form one unit of the house, a unit which is separated from the rest of the rooms.

The sets of blue prints of this plan will be furnished at nominal cost on application to the real estate editor of



FLOOR PLAN 20 x 30 PLAN NO. 405

Spaulding Logging Co.

Salem, Oregon Telephone 1830

AIR COOLING SHOWS VALUE AMIDST HEAT

Engine At 250 Degrees Reaches Maximum Efficiency, Franklin Claim

The ability of a Franklin air-cooled engine to function perfectly under a high temperature where a water-cooled engine would have lost power was clearly demonstrated last month when a Franklin Airman set a new world's record for a transcontinental round trip between Los Angeles and New York City, according to Cannon Ball Baker, well known cross country driver who piloted the Franklin on its record breaking run.

"Before I started the 6,692 mile grind from coast to coast and return, I equipped the Franklin with a heat indicator," Baker said. "At one point of the terrific grind, after I had driven the Franklin several thousand miles, we were crossing the desert wastes of Arizona. The heat was blazing at 115 and the temperature of the

engine mounted. As the engine heat continued to increase, it was noticeable that the efficiency of the air-cooled power plant became more pronounced and it speeded on mile after mile through the sandy stretches.

"Finally, the heat indicator registered 250 degrees—a temperature that would have 'burnt up' water-cooled engines which must work below 212 degrees, the boiling point of water. However, the only effect this heat had on the

Franklin engine was to bring out its maximum power. Regardless of high or low temperatures, the Franklin performed masterly throughout the trip. This clearly demonstrated to me the efficiency of the air-cooled system where a car is being put through a terrific pace."

In setting the transcontinental round trip record, Baker covered the 6,692 miles in exactly 15 hours, 23 minutes, breaking the former record by 10 hours, 36 minutes. This included all stops.



Three Senses

Years ago they used to talk about "Horse Sense."

Then we shopped for a car. One car was priced at \$2,000; another car cost \$2,100 or 5 per cent more. The repairs on the first ran \$125 a year—on the second \$25 a year. We reasoned "Automobile Sense."

Now it's time to think "HOUSE SENSE."

You Pay for a Brick Home— Why Not Own One?

HOMES OF LASTING CHARM FREE
Brick-How to Build & Estimate 25c
Heart of the Home (Fireplaces) 25c



3913 Arctic Bldg., Seattle
In Salem: Salem Brick & Tile Co.

A NEGLECTED CAR

will run for a long time, But someone always pays for the Neglect

Monroe S. Cheek

Complete Automotive Lubrication
Court at Capitol Phone 2295

A New Method of RE-ROOFING

Saves You Money — Adds to Comfort

No need to remove your old roof—lay Red Cedar Shingles right over the old roof.

A thoroughly practical method has been worked out—saves removing old roof, avoids litter, improves appearance of house, adds amazingly to warmth and comfort.

We'll be glad to supply details, illustrated folder, estimate—also the shingles. We provide a complete shingling and re-shingling service. Don't re-roof until you investigate.



A practical and proven method

Call or Phone for Fuller Particulars

J. W. Copeland Yards

Yards in West Salem, Albany, Lents, Hubbard, Yamhill, WEST SALEM—TELEPHONE 576



House Moving

House Wrecking

Heavy Machinery Installed
Foundation Work
Stack Raising

We are equipped to handle your city or country work quickly and economically.

We also buy and sell buildings to be moved or wrecked.

Call on us at once. You will find that our work will be satisfactory and our prices very reasonable.

We Rent

JACKS AND ROLLERS FOR HOUSE MOVING

LET US SAW YOUR WOOD

KUSEL BROS.

2173 State Street

TO WHOM IT MAY CONCERN WHEN BUILDING OUR HOME WE USED

GABRIEL POWDER & SUPPLY CO.

LUMBER! WE KNOW THAT WE HAVE A REAL HOUSE! BUILT WITH QUALITY MATERIALS



"Telling your neighbors where they can get a fair deal is the finest way of being neighborly. And it encourages square dealing."

—says Prarty Cal.

LUMBER

and All Building Materials

Gabriel Powder & Supply Co.

Office, Yard and Warehouse

610 North Capitol

Telephone 2248