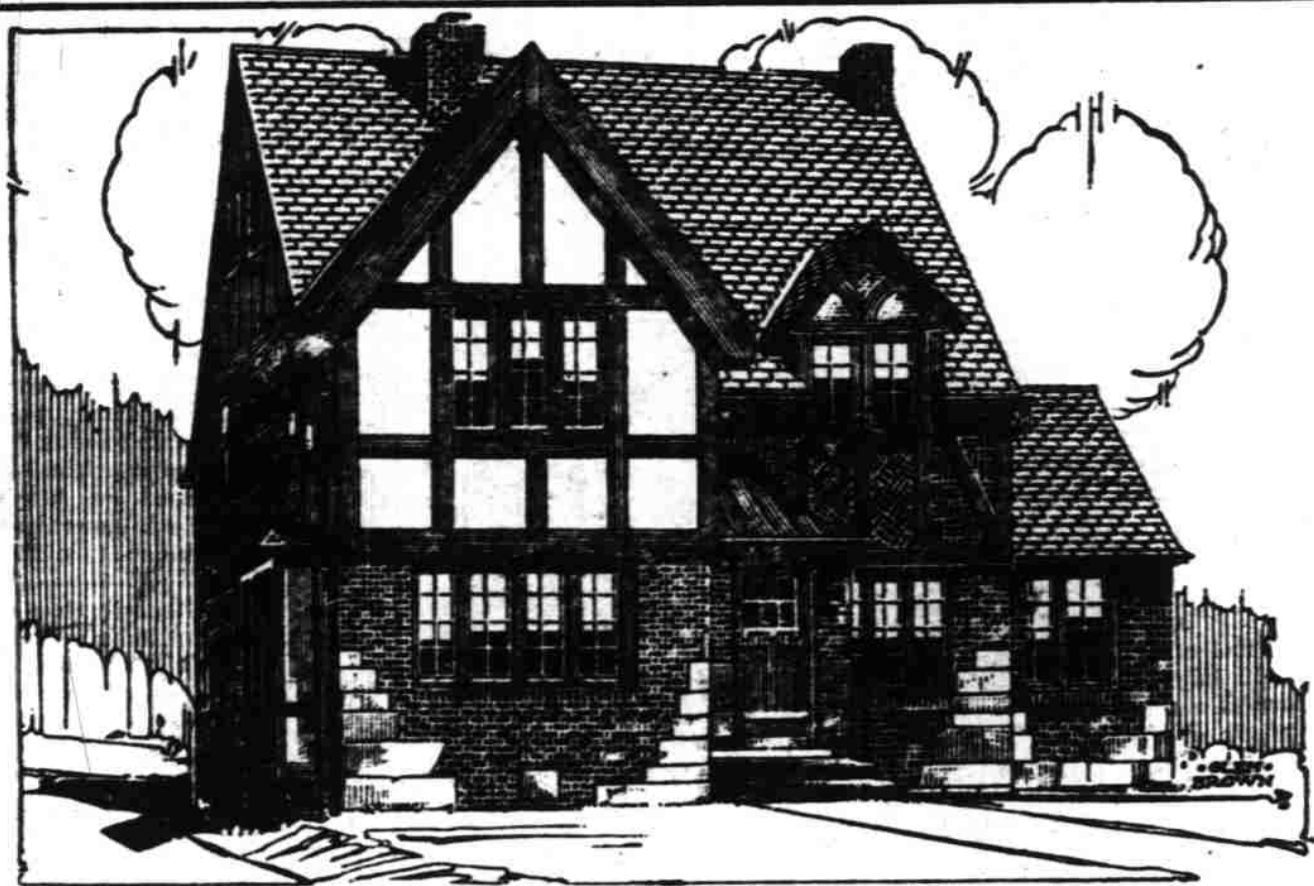


A Home Whose Appeal Is Instantaneous



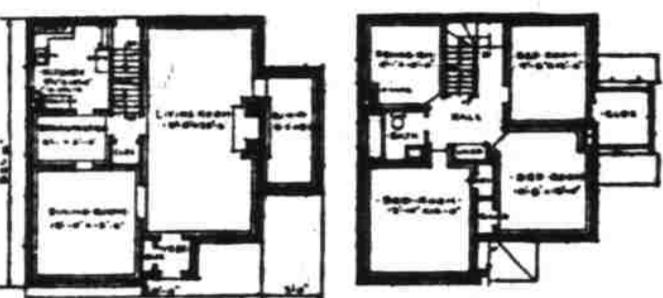
THE TUSCUMBIA—DESIGN A470

THIS home was added to our collection in rather an unusual manner, typical, however, of the house itself as it appears amid its sister residences of frame construction in Shaker Heights, Cleveland. The man who discovered it, or, more properly speaking, to whom it reached out compellingly and stopped, was driving around on a tour of construction inspection, really seeking ideas for a proposed home of his own. At sight of this house he stopped.

That is the sort of house it is. It hits you right between the eyes with its impressiveness. It has variety far above the usual in a home so small. There is stone tossed randomly into the common brick walls and, adding to the interest, there is patternwork in the paneling, and stucco with English timbered treatment to complete the very effective picture. And no monotony.

The brick used in this particular home is the Common Brick Manufacturers' Association, Cleveland, Ohio, can furnish complete drawings for this design. Leaflet on brick construction sent upon request.

were run of kiln common brick, varying in colors according to their exposure to the fire in the burning, with here and there a few clinkers, and all of them enlivened by the delicate touch of fire flashings. The house stood out in its surroundings like a fire bush in a thicket and sold long before it was completed. One can readily see why.



Its interior arrangement is just as delightful as its exterior appearance. There is considerably more living space than one would expect in a home of its size and the arrangement is most convenient. An exceptionally large

living room, well lighted dining room, breakfast nook and kitchen, with a sun room off the living room, comprise the first floor. On the second floor are four comfortable bedrooms, an ample bath and a dressing closet over the sun room, which, if desired, might easily be converted into a cozy sewing room.

LUMBER INDUSTRY ENLISTS IN PLAN

Importance of Campaign to Oregon and Washington Found Very Great

The lumber industry of the Portland district has enlisted in the trade extension campaign that has been worked out for the West Coast Lumbermen's association by Colonel W. B. Greeley, its secretary and manager. Colonel Greeley in the brief time he has been associated with the lumber industry of the Pacific northwest has taken hold of its problems aggressively. He lays stress upon the necessity for better merchandising of this commodity which is so vital to the prosperity of Oregon and Washington.

The industry itself has felt in the past that there have been many weaknesses in its selling operations. There has not been the same organized and persistent campaign to open new markets and enlarge existing ones that other lines of manufacturing have promoted. Nor has there been any real system of control so that lumber would be distributed to the greatest advantage. In slack times production has vastly exceeded consumption. The desire to liquidate surplus stocks has often influenced shippers to surfeit their best markets, and sales were made at a loss.

Of the association's annual budget of \$700,000, trade extension has been assigned \$409,500. Apparently a large amount, it is small in comparison with funds being spent for similar purposes by other industries. It is but a beginning toward the campaign of

education that should be waged for the wider use of Douglas fir and other western woods. In conducting the campaign the lumbermen have the advantage of realizing the sound merit of their product and the assurance that markets once built up will be permanent.

The importance of the lumber industry to Oregon and Washington cannot be mentioned too often. Colonel Greeley finds that the annual production of lumber in these two states exceeds \$230,000,000, and that this figure is increased to more than \$335,000,000 when all forest products are included. It is the keystone in the prosperity of the Pacific northwest and any effort to improve its status will redound to the benefit of all. This editorial reproduced from The Morning Oregonian, June 18, 1928.

QUOTATIONS HAVE BEEN MAINTAINED

Some Pressure Being Brought to Bear to Prohibit Further Advances

The new lumber quotations put out by the Northwest manufacturers have been well maintained during the past two weeks. While the current West Coast Lumbermen's barometer reflects a somewhat smaller volume of new business, this is due in large measure to the nearness of the holidays and the unwillingness of mills to take on much new business. Furthermore, there are a good many manufacturers who believe prices will be still higher and being well supplied with business are not an-

Comfort and Economy in Six Rooms



PLAN NO. 609

The Colonial type cottage makes a strong appeal with the home-builder of average means, where economy of funds must combine with comfort and good taste. The accompanying design unites these elements in a pleasing design that has proved popular with many builders during the 1924 season.

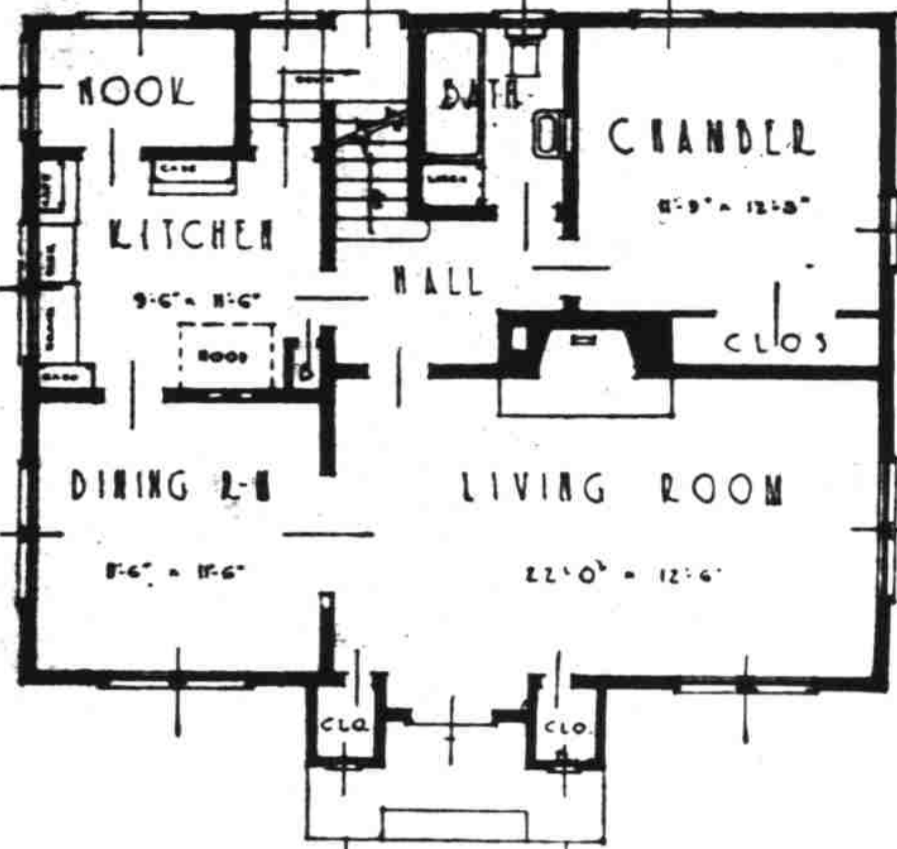
Treatment of the entryway is excellent and the two coat closets are a convenience which will be appreciated by the housekeeper. The railing along the top of the porch adds an ornamental touch to the front facade and the two dormer windows fit pleasingly into the design. Wall plantings will add materially to the exterior appearance.

The ground floor is nicely portioned and the position of the fireplace will compensate in extra heat for the space occupied. The living room is of ample size and is well lighted. Arrangement of the dining room and kitchen is ideal.

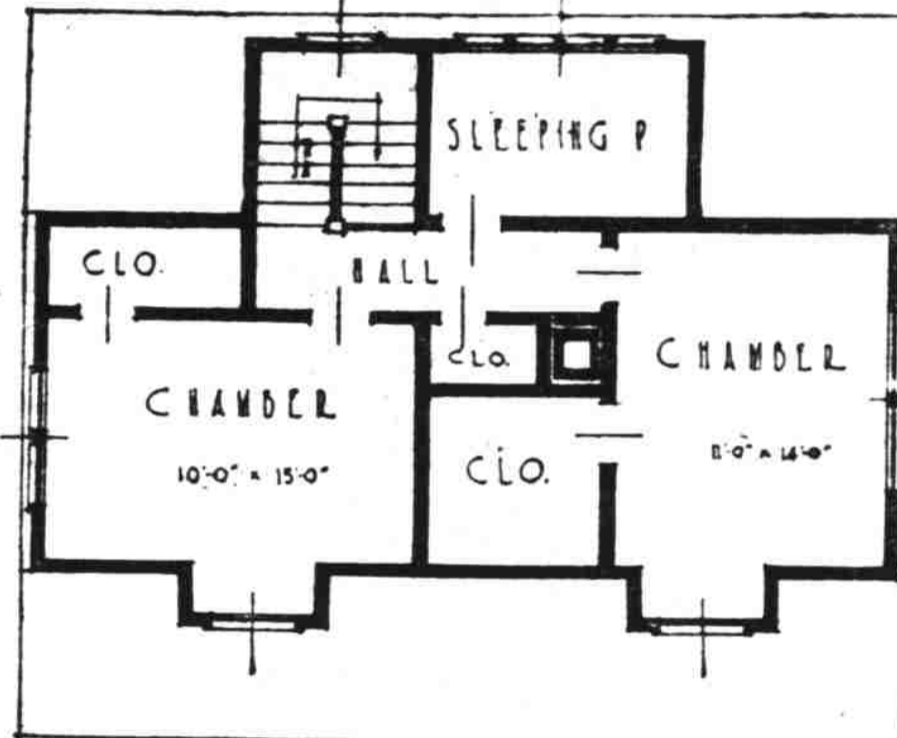
The downstairs chamber is large enough for ordinary use and its windows afford cross ventilation. The central hall ties in all the rooms on the ground floor and a stairway leads to the upper story. The upstairs bedrooms are of excellent dimensions and well supplied with light, ventilation and closet space.

The sleeping porch shown in the plan is located directly above the bath room and if the owner desires this space may be easily altered for use as an upstairs bath room.

Cost of this house should be well within the means of the average family.



FIRST FLOOR PLAN PLAN NO. 609



SECOND FLOOR PLAN PLAN NO. 609

Spaulding Logging Co.

Salem, Oregon

Telephone 1830

Driving Car by Compass An Every Day Affair

You may sometimes call your car "the old boat." But it probably never occurred to you to drive by compass.

However, there are lands where the navigation of an automobile by compass may be necessary. Australia, South Africa and South America have great areas with long dirt roads, unfenced, reaching for miles without a turn. Sometimes the roads are little more than wagon ruts, and the driver who goes off the road at in the wrong direction.

KEEP WINDSHIELD CLEAN

night may bump across the prairie for a mile or more before realizing that he has lost his course. Thus, Dodge Brothers, Inc., doing an international business on all six continents, is providing for its dealers with souvenir compass watch fobs as gifts for purchasers.

"These were especially designed for countries where long straight roads prevail and where there are few landmarks," says a circular sent out with the fobs. "Also Col. Charles Lindbergh was made once a Doctor of Laws by the University of Wisconsin, Madison air mail was twice as heavy as on any previous day."

KEEP WINDSHIELD CLEAN

"A clean windshield glass diminishes the glare of headlights and adds greatly to night driving. Care should be taken when cleaning this glass to keep it free from oil as this holds dust and moisture. A special glass cleaner is recommended for this work, advises the Western Auto Supply company."

AIR MAIL, FOLLOWS LINDY MADISON, Wis.—On the day Col. Charles Lindbergh was made once a Doctor of Laws by the University of Wisconsin, Madison air mail was twice as heavy as on any previous day.

A New Method of RE-ROOFING

Saves You Money — Adds to Comfort

No need to remove your old roof—lay Red Cedar Shingles right over the old roof.

A thoroughly practical method has been worked out—saves removing old roof, avoids litter, improves appearance of house, adds amazingly to warmth and comfort.

We'll be glad to supply details, illustrated folder, estimate—also the shingles. We provide a complete shingling and re-shingling service. Don't re-roof until you investigate.



A practical and proven method

Call or Phone for Fuller Particulars

J. W. Copeland Yards

Yards in West Salem, Albany, Lents, Hubbard, Yamhill, WEST SALEM—TELEPHONE 576

You can actually SEE this added value in FLOORS

ACCOLAC, it is called
We're showing it this week.

A BOON to busy housekeepers, a new time-saver—an added value that you now get in Armstrong's Linoleum—we're showing it this week. Accolac it is called, and in a year's time this new improvement can save you hours and hours of endless tiresome floor cleaning labor.

For Accolac is a new finish—a lacquer finish—that seals the surface of the linoleum. It forms a tough, non-porous surface that dirt and dust can't penetrate. Thus it cleans with simply a dusting. You can actually SEE the added value of Accolac. It gives a soft glowing, non-glaring lustre to the bright fresh designs in Armstrong's Linoleum.

See for yourself this new feature in floors. Or telephone if you cannot come around.

C. S. Hamilton FURNITURE CO.
340 COURT ST.

Estimates furnished without obligation to you.

Terms may be arranged to suit your convenience.

If it were—?

Even if the difference in cash between a brick house and one of less durable material was as great as questionable authority says it is, still the brick would be a good buy.

But considering the ACTUAL exceedingly small difference in first cost, there is little excuse for any home builder to accept the heavy obligation of upkeep which will be a burden as long as he occupies the house.

You Pay for a Brick Home --Why Not Own One?

Homes of Lasting Charm	FREE
Brick—How to Build and Estimate	25c
Heart of the Home (Fireplaces)	25c

PACIFIC NORTHWEST BRICK AND TILE ASSOCIATION
for Beauty

913 Arctic Bldg., Seattle
IN SALEM: SALEM BRICK & TILE CO.

It comes otherwise if the mill continues its present program. One of its outstanding features of the lumber situation from a national standpoint is the drastic curtailment which has taken place in the South due to floods and weather report. Southern pine statistics report pronounced reductions in output and eastern distributors advise the West Coast Lumbermen that this feature is an important one at this time.

There should be no letting up in the curtailment program. Manufacturers should budget their production during the balance of the year. There should be no thought of increasing production in order to take advantage of the present upward trend of prices. There may be manufacturers who will disregard this suggestion for reasons which seem adequate, but the West Coast Lumbermen believe the great majority of manufacturers will heed the experiences of the past and operate cautiously during the last half of the year.

It now appears that there will be a sharp reduction in the output of logs on Puget Sound and Grays Harbor during the next six weeks. There are two explanations for the upward trend of cedar prices, first, the great scarcity of cedar logs, with higher prices and secondly, a brisk demand for red cedar shingles. Rather restricted production has also been a feature in strengthening the shingle market.

Let us tell you how to insulate it to keep it warm in winter and cool in summer. We have a number of practical suggestions.

LUMBER and All Building Materials
Gabriel Powder & Supply Co.
Office, Yard and Warehouse
610 North Capitol Telephone 2248

IF YOU PLAN TO HAVE A HOME OF COMFORT YOU SHOULD SEE
GABRIEL POWDER & SUPPLY CO.

COMFORT

Read The Classified Ads
MIKADO
Have Your Scribbles Analyzed

The YELLOW PENCIL WITH THE RED BAND

Louise Rice, world famous graphologist, can positively read your talents, virtues and faults in the drawings, words and what notes that you scribble when "lost in thought". Send your "scribbles" or signature for analysis. Enclose the picture of the Mikado head, cut from a box of Mikado pencils, ten cents. Address: Louise Rice, care of EAGLE PENCIL CO., NEW YORK CITY