

### A Bungalow After the California Type



THE OTSEGO—DESIGN No. 201

ADAPTATIONS of the California bungalow are usually very attractive with their wide roof overhang, their broad porches and their flat stretches of roof with gables that remind one of a half closed eye. Built close to the ground, they often appear as just to have sprouted and grown up from their sites, to which they still insistently cling. This one is typical.

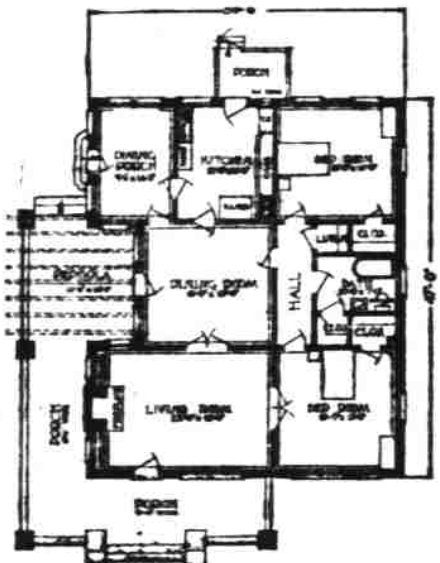
Designed for a small family and arranged with every consideration for comfort and convenience, it is a delightful little home. The living room is large, supplied with an open grate, which insures many an evening of comfort in late spring and early autumn and throughout the long winter months. Most folk are quick to develop a fondness for an open grate wood fire.

Immediately back of the living room is a well lighted and cheerful living room opening upon a pergola, which will replace it in the

warm summer evenings, and yet back of this an enclosed dining porch for winter breakfasts. The kitchen is large, well appointed and is supplied with a rear service porch.

The two bedrooms are large, each lighted well, with the bath conveniently placed between.

The construction is of masonry and ordinary common brick in random colors being used, with asbestos shingles for the roof, insuring the maximum of fire resistance at a minimum outlay, for it is not an expensive house to build. The extensive living porch, stretching from across the front to more than halfway back on one side is an attraction to every lover of the open air and is made doubly attractive by the ingenious construction of the brick supporting pillars. It is a type of bungalow that is at its best in a wooded setting, but can be made beautiful with shrubbery alone, preferably of the low growing varieties.



The Common Brick Manufacturers' Association, Cleveland, Ohio, can furnish complete drawings for this design. Leaflet a brick construction sent upon request.

### LUMBER MARKETS FOUND TO ADVANCE

Reports From Inland Empire Indicate That Pine Market Stronger

The Pacific Northwest lumber market during the past two weeks has continued to stiffen and advance. Just what the total advance amounts to is rather difficult to definitely determine, al-

though buyers declare many uppers are easily \$2.00 higher than they were thirty days ago. The advance on common has not been so pronounced. California and Atlantic coast prices are up \$2 or more. In any event the mills are displaying a splendid spirit in asking and insisting upon higher prices.

Eastern wholesalers and retailers seem to be gradually awakening to the fact that prices are actually and not theoretically higher in the Northwest. Most of the coast wholesalers have definitely advanced their prices in the East. Many of them are refusing to take business at less than current mill prices. The East is presently well aware of the fact that this market

is on the up grade. Association statistic reports do not indicate any material decrease in new business as a result of higher prices. History shows rising prices stimulate business.

All indications seem to point to a strengthening market, particularly since curtailment is now a fact and since most mills will continue to curtail during the balance of the summer. While many manufacturers conscientiously oppose curtailment as a remedy for market depression, they should now be convinced that the present curtailment has had a wonderful stimulating effect on the market. There is no doubt but that theoretically the proper and economic way to improve conditions is to increase the demand for a product, but unfortunately this is a slow, tiresome method and while the process is going on many manufacturers drop by the wayside through lack of financial strength.

The west coast statistical reports indicate business well maintained in all departments—rail, domestic cargo and export. Shipping figures also bear definite witness of the tremendous volume of lumber moving out of the Northwest via the water route.

Good reports come from the

Southwest, where conditions are said to be better than at any time during the last six years. This condition is due to splendid crop prospects.

The passing by Congress of the Mississippi flood control measure means much to the lumber industry of the United States, because many millions of feet of lumber will be used and this work will be expedited as rapidly as possible.

Stocks at Northwest mills are very badly broken. There are only a few mills which have anything like complete stocks.

There will be no over supply of logs on Grays Harbor or Puget Sound inasmuch as loggers are preparing to curtail during the dry, hazardous summer period. This curtailment has two good effects, it prevents any accumulation of logs and it reduces the fire hazard.

Red cedar shingle prices are higher and the market is firm.

Reports received from the Inland Empire indicate that the pine market, while stronger than it was, has not advanced as cost prices. There have been some increases, but no general advance. One of the interesting news developments of the past week has been the decision of some of the Inland Empire operators to operate on a five and one-half day basis during the summer months. (Reprint from West Coast Lumberman June 1, 1928)

### PAINTING STUCCO HOUSE IMPORTANT

Surface Should be Thoroughly Dry and Then Work Made as Easy

By Jane Stewart

Buying or building a house, for most people, is not an everyday occurrence. Usually it is the outcome of years of planning and saving. Sometimes it is the result of a sudden decision or impulse. But at all times it is considered a serious venture—something from which they should get their money's worth. It is important that a house should be practical as well as beautiful.

Where stucco has been selected for the surface, it must not be taken for granted that this finish is sufficient unto itself. Like a great many other building materials its service is increased through the application of paint, which prevents the penetration of moisture, at the same time preserving the texture of the original surface. Houses which are surfaced with stucco are more or less porous and may present water absorptive surfaces. During the rainy season a great deal of water might be absorbed, resulting in a spotted surface. Or, if the moisture absorbed has a chance to freeze, the expanding of the ice gradually spreads the size of each little pore or crack, these cracks becoming larger year by year. Too, moisture entering the surface sometimes affects the underlying structure and makes the house damp.

The application of oil paint to a stucco surface can eliminate all such possibilities, while producing a smooth film which will not be a catch-all for dirt. Ordinarily, cinders and soot adhere to a rough surface, and once lodged in a stucco house cannot be removed. A painted surface, however, is unaffected by dirt or by a driving rain,

the latter only serving to cleanse it.

Painting stucco is not difficult. If the surface is thoroughly dry it is done in much the same way that wooden buildings are painted. The main consideration is to see that the surface is dry and preferably aged. And that high quality oil paints are used. There is no economy in a cheap paint, as it does not stand up under severe weather conditions, and gives inadequate protection.

For many reasons a spray painting gun is very popular for applying paints and stains to pebbles dash and other rough types of stucco. It saves a great deal of labor cost and gets the job done in less time, costing from three to five times as much surface per day as can be done by one man using a brush. And where three coats would be required for brush work, two are sometimes sufficient when sprayed on. The spray finish is smooth and durable and slightly thicker than that of hand work.

In painting a house, careful consideration should be given to the selection of colors. With a little advance thought and care it is just as easy to select attractive colors as unattractive ones, and stucco houses offer unlimited possibilities for fresh and original schemes. It must be kept in mind, though, that the ones selected should suit the type of architecture of the building, and altogether, be in harmony with surroundings. For example, a dwelling, Italian in design, might be very attractive and suggestive of a Mediterranean villa, painted a soft pink, with the roof stained a medium golden brown. A more conservative house would be lovely painted light gray, using darker gray for the trim, and a tile-red roof. If the house belongs to no particular period, the appropriate combinations are endless—cream and dark tan; stone gray and green; ivory and medium blue.

All things considered, paint does a great deal for a stucco house. Plain stucco quickly becomes drab looking, while running the risk of deterioration in quality from exposure. On the other hand, if it is painted, its looks are not only improved, but its service qualities are increased beyond comparison.

### ASSOCIATIONS WILL FORM COMBINATION

Action Comes at Meeting Held in Portland Recently; New Plans Made

LONGVIEW, Wn., June 9.—The Pacific Northwest Millwork Association will be consolidated with the West Coast Lumbermen's Association as the result of a unanimous vote in favor of the move given at a meeting of the millwork body in Portland recently. According to plans for the consolidation, which have been under consideration for several months, the members of the millwork association will become a special group within the new West Coast Lumbermen's Association, Seattle, with which the West Coast Lumber Trade Extension Bureau, Longview, recently was consolidated. Between forty and fifty manufacturers of millwork are involved in the Association merger.

The unification of the millwork

### Five Rooms Planned for Narrow Lot



PLAN No. 534

This five room bungalow is designed to give ample garden space on a 100 by 50 foot site. No residence lot should be of smaller dimensions, especially in Salem, where ground is cheap and climatic conditions are favorable to growth of lawns and shrubbery.

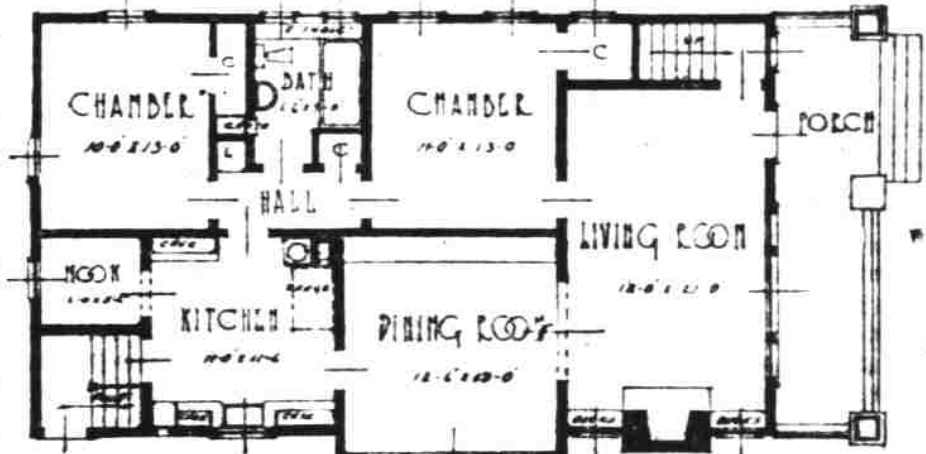
The house is well planned to afford comfort to the average family. The porch across the front is attractive, and may be used to excellent advantage during the summer months. If the house faces the west the porch will serve to shelter the living room from afternoon sun.

The front entrance is convenient to the stairway and is well located relative to the privacy of the living room. The fireplace is of course indispensable and the tiling should be selected with studied care, considering the abundance of light from the front windows.

The two downstairs bedrooms are large, and provided with plenty of window space. Tendency to use the front bedroom as a hallway may prove awkward, and if the size of the family permits it would be a decided advantage to utilize this space as a sewing room or children's playroom. Two chambers may be finished upstairs.

The dining room is large and cheery, and the kitchen, with its adjoining breakfast nook, is well equipped. The plan for the enclosed back porch may be altered to afford space for a refrigerator and a small cupboard.

Floor area totals 1144 square feet.



FLOOR PLAN PLAN NO 534

### Spaulding Logging Co.

Salem, Oregon

Telephone 1830



### If it were—?

Even if the difference in cash between a brick house and one of less durable material was as great as questionable authority says it is, still the brick would be a good buy.

But considering the ACTUAL exceedingly small difference in first cost, there is little excuse for any home builder to accept the heavy obligation of upkeep which will be a burden as long as he occupies the house.

### You Pay for a Brick Home —Why Not Own One?

Homes of Lasting Charm FREE  
Brick—How to Build and Estimate .....25c  
Heart of the Home (Fireplaces) .....25c



913 Arctic Bldg., Seattle  
IN SALEM: SALEM BRICK & TILE CO.

### A TREAT FOR YOUR FLOORS AT A SPECIAL PRICE



You Save 60c

ACME Quality Granite Floor Enamel is a durable high gloss finish made to stand the wear and tear of floor use. It is easy to apply and dries quickly with a tough elastic finish that is easily kept clean. It will not turn white from water marks. This offer comprises any one of ten colors. Get yours at this Special Price.

One Full Quart of Acme Quality Granite Floor Enamel and a 3-inch Brush for only \$1.25

### SALEM HARDWARE CO.

120 N. Commercial

THE WINCHESTER STORE

TELEPHONE 172

### NEED MONEY ?

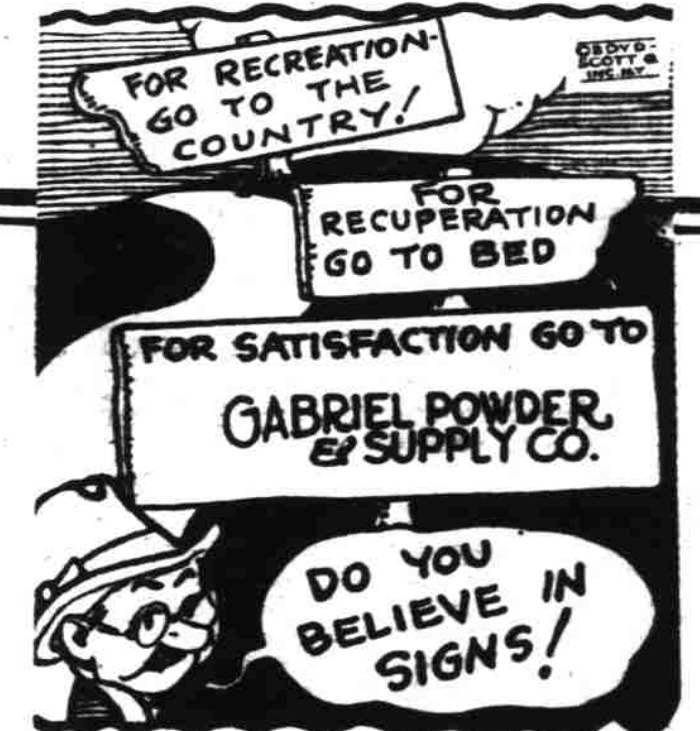
On Farms Business Property or Homes

Investigate My Disappearing Mortgage

MY RATES ARE THE LOWEST

P. H. BELL

United States Bank Bldg. TELEPHONE 607



"FOR ADVICE ABOUT BONDS GO TO YOUR BANKER. FOR ADVICE ABOUT YOUR HEALTH GO TO YOUR DOCTOR. FOR ADVICE ABOUT BUILDING SEE GABRIEL POWDER & SUPPLY CO."

—SAYS PRACTY CAL.

LUMBER and All Building Materials  
Gabriel Powder & Supply Co.  
Office, Yard and Warehouse  
610 North Capitol Telephone 2248

1928 Emancipation Business and finance have been emancipated from politics, says a student of money panics in The American Magazine.



Louise Rice, world famous graphologist, can positively read your talents, virtues and faults in the drawings, words and what notes that you scribble when "lost in thought". Send your "scribbles" or signature for analysis. Enclose the picture of the Mikado head, cut from a box of Mikado pencils, and ten cents. Address Louise Rice, care of EAGLE PENCIL CO., NEW YORK CITY