

The War Tax on Automobiles Has Been Taken Off, Which Is Lowering the Prices to the Customers on All Makes and Models
State Highway System Has Become a Most Valuable Asset; Oregon Communities Now Depend on All the Year Transportation

SECTION TWO
EIGHT PAGES

The Oregon Statesman

WAY BETTER THAN LAST YEAR.

AUTOMOBILE
BETTER HOMES
SLOGAN

SEVENTY-EIGHTH YEAR

SALEM, OREGON, SUNDAY MORNING, JUNE 3, 1928

PRICE FIVE CENTS

THEFTS BRING ABOUT HEAVY ANNUAL LOSS

Unsecured Cars Cause One of Greatest Problems For Police Authorities

Theft of articles from unsecured automobiles is one of the greatest problems of police authorities, especially in the larger cities, and motorists annually lose, through their own carelessness, baggage and valuable packages which in many instances cannot be replaced.

This statement was issued by National Headquarters of the American Automobile Association in the form of an appeal to the car owners of the nation to aid in the campaign against this form of larceny.

Unsecured automobiles on streets in business areas offer a better opportunity for the "sneak thief" than one parked several blocks away, says the A. A. A., because in the "hustle and bustle" the thief has a better opportunity to make away with his ill-gotten gain.

The national motoring body urges car owners, while traveling, or while parking in their own cities or towns, to use caution in leaving their cars. Some of the protective methods are as follows:

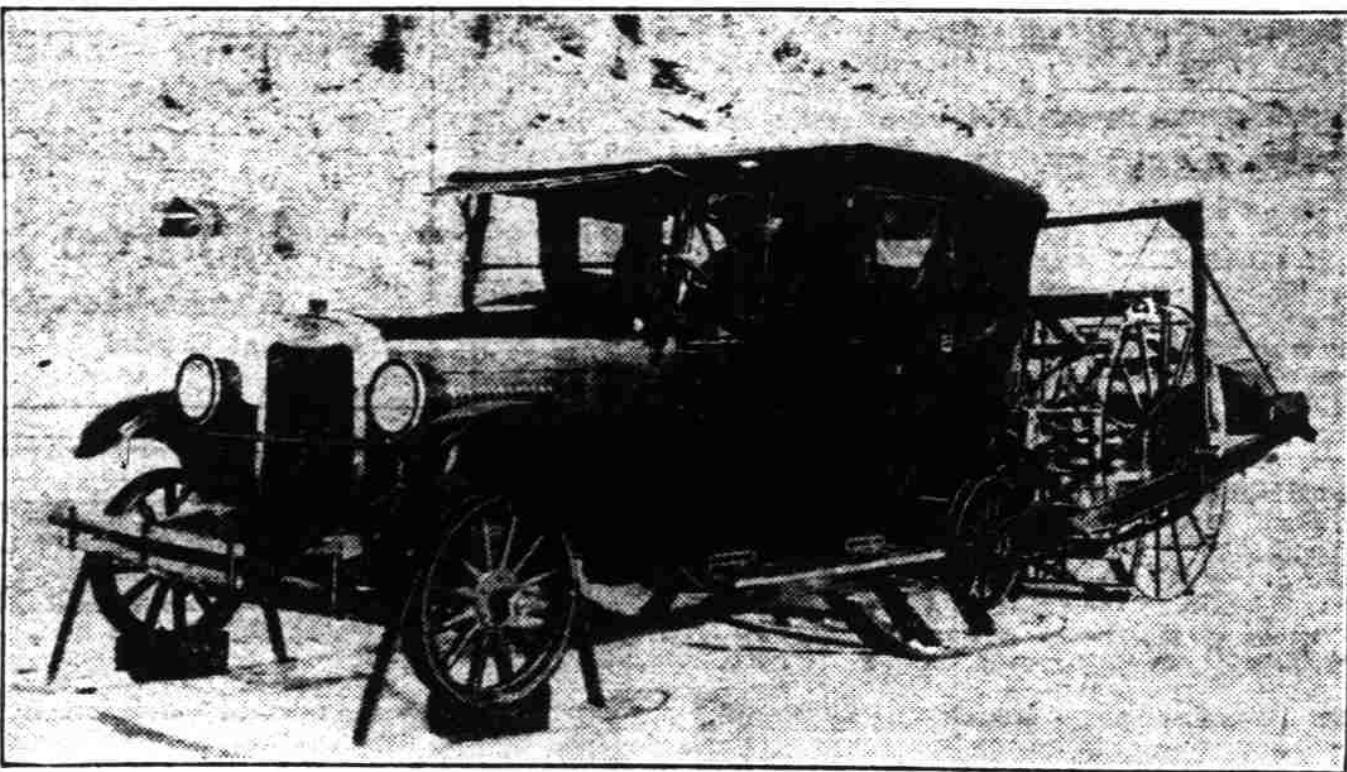
"Where baggage or packages are left in the automobile, see that all windows are closed and that the doors are locked. Be sure that the windshield is also fastened.

"Where it is not possible to lock the car, remove the baggage and lock the trunk, and have them checked at some convenient place while the car is parked.

"When placing the car in a public garage, although articles are usually safe in those of recognized standing, be sure that pocket-books, jewelry, vanity cases, etc., are left lying on the seats.

"Always see that the motor, meter, spare tires and other accessories are of the type that are either locked or permanently attached to the car. Hundreds of thousands of dollars are represented in the annual loss from the theft of accessories from parked cars.

"Chevrolet 'Snow Boat' Braves Alaska Drifts"



Snowshoes and dog teams were too slow a means of transportation for this pioneer miner in negotiating the 400 miles between Chitina, Alaska, and Fairbanks, near the Arctic Circle. By mounting the wheels of his Chevrolet on skis and linking the paddle-wheel propeller onto the rear wheels of his car, he quickly covers snow of any depth. Loss of life might easily result on the 400 mile trip were his rugged engine to fail him.

WHIPPET PLANNING FURTHER EXPANSION

Present Production Schedule Will be Materially Enlarged Soon

TOLEDO, Ohio—(Special)—More than 110,000 Whippet four cars have been built and shipped since January 1," said John N. Willis, president of the Willis-Overson company, here today. "Orders on file for this model at the present time total 30,000 and we have never been within 20,000 cars of equalling demand since the second week following the announcement of the present price.

"Extensive plans are being made to materially enlarge the present production schedule on the Whippet Four and new factory units are rapidly being completed.

(Continued on page 6)

Automotive history was made last month in Alaska, when the city of Fairbanks held its first automobile show, which according to advice received from dealers in that far northern point, was an unqualified success. More than 1,000 residents of Fairbanks took an active part in the event and every dealer of the city pronounced the show a most interesting one.

This event was the first of its kind ever held in Alaska and was the further North automobile show in the world. Every General Motors car represented in the far North occupied a commanding position in the display, which was held in the Moose auditorium.

Motor cars have been known in Alaska for some time. The first to arrive in Fairbanks, was a Pope Toledo of 1907 model. It reached the territory in July, 1908, and was operated as a stage between Fairbanks and Port Gulch, a distance of 11 miles. Late in the fall of the same year, two more cars were shipped in from the "Outside." One of them was used as a stage between Fairbanks, Cleary City and Chitina, a distance of 400 miles.

(Continued on page 6)

NEW TYPE CLEANER ON GRAHAM-PAIGES

"Oil-Wetted" Woven Metal Keeps Dust and Grit Out Of Engine

An entirely new type of air cleaner, depending on the adhesiveness of "oil-wetted" woven metal sponge for its effectiveness, is one of the advanced features of the new Graham-Paige cars. The cleaner is said to be of unusual efficiency, removing virtually all solid particles from the air.

In the Graham-Paige installation, the new type filter is mounted above the carburetor. The housing is of sheet metal having openings top and bottom that are several times the area of the carburetor intake. Loosely packed

(Continued on page 13)

20,000 MILES NOW ON FEDERAL PLAN

National Motoring Body Believes Road Construction to Exceed Records

Improvement of the State and Federal-aid highway systems under the supervision of the highway departments of the several states will go forward during the season now opening with the construction of more than 20,000 miles of surfaced roads and about 8,000 miles graded and drained.

This statement was issued by National Headquarters of the American Automobile Association and is based upon reports received through the Bureau of Public Roads, which maintains a close contact with the State road-building agencies.

The national motoring body says that highway construction in 1928 will at least equal and probably exceed the highest mark recorded in any preceding year.

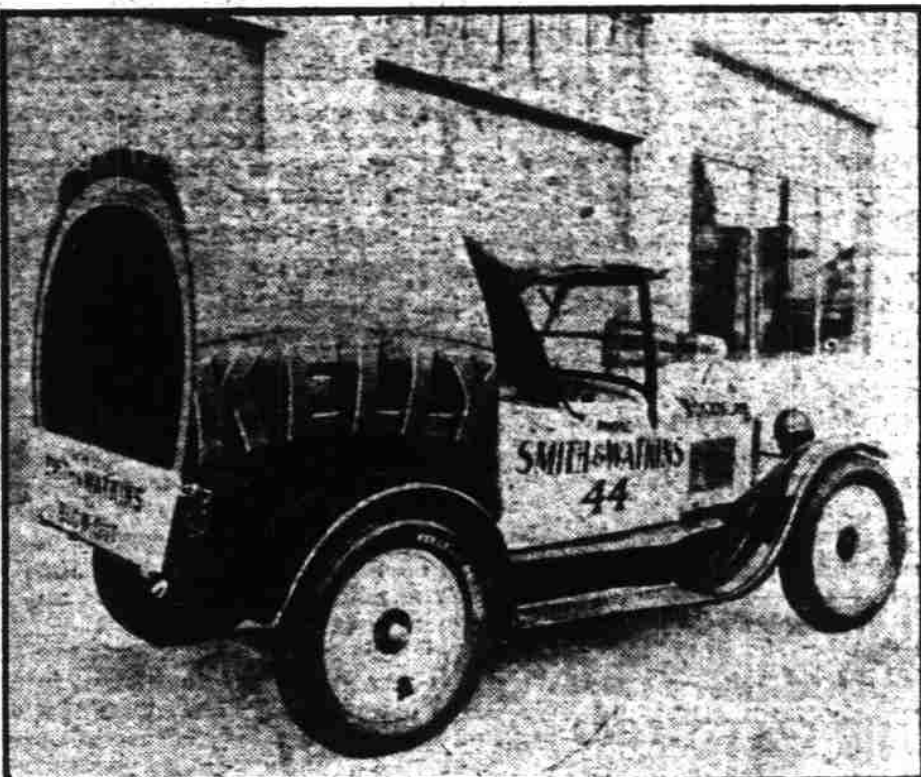
The A. A. A. is advised that State reports also indicate that at least 240,000 miles of the total of 288,000 in the State highway systems will be maintained this year under the supervision of the highway departments—a fact which will assure the traveling public of the maximum degree of road service.

Funds estimated as available for expenditure during the year by the State highway departments are about 25 per cent greater in total amount than similar estimates indicated at the beginning of last season. It is declared to be practically certain that the funds available will be sufficient.

NEW TIRE MACHINE INSTALLED

Zosel's Tire shop has installed a Ke Hawke Tire machine. This machine enables the examination of any tire from the smallest auto tire to the largest truck tire with perfect ease. The casing is placed on four arms which open by pressing a button and open the casing for close inspection. The machine is especially valuable in a repair shop because a tire that has been damaged can be readily and thoroughly examined without delay or trouble.

Smith & Watkins Add Another Service Car



FROM WHEATFIELDS TO KITCHEN; CLEAN

Valley Motor Has Agency for Cleaner Harvester in Four Counties

From the wheat field to the kitchen—all the way—wheat under modern conditions travels with out coming in contact with the human hand. Machinery of various kinds and in many forms attends the progress of the golden berry from the field to the baker's or the housewife's oven. The human factor is a negligible quantity throughout its long and devious course to the ultimate consumer.

The ground for the planting of the crop is prepared by machinery—plows and harrows and drills all being drawn by tractors. When the crop is ready to harvest a combine moves across the field under its own power cutting and threshing the wheat as it goes. The grain is automatically lifted to a bin at the top of the combine from where it passes by gravity to

Smith and Watkins service station have added another service car to their equipment. The new car which is equipped with 6 size oversize Kelley tires with an extended wheel base and a lower slung body is the second service car now in service at the station. The body of the car is designed from a cross section of a Kelley Springfield tire and anyone seeing the car cannot help but know that it is advertising tire service.

On the radiator of the car is an imitation bullet with the inscription "Shooting to a Blow out."

"Jim" Smith of the firm stated yesterday that the station had enjoyed very good business and that both cars had been kept very busy since the new car had been put in. Many improvements have been made at the Smith & Watkins station and an addition is about to be completed which will add new departments to the service.

Information received from the headquarters of the A. A. A. in Salem recently signified that the better road to Cascadia for this week would be by the way of Halsey and Brownsville. Many people are making the trip each week as that section is becoming a very popular outing place.

CASCADIA BECOMES POPULAR

Dodge Brothers are building a four passenger coupe on the Victory Six chassis now which is proving popular.

OREGON HIGHWAYS MODEL FOR OTHERS

New Mexico Shows Increase in Gasoline Gallonage During Year

"Oregon roads have developed in the last 10 years to the point where they are a model for the rest of the world," said Chas. Hall, director of the Oregon State Motor association, and chairman of the Roads and Highways committee of the Senate. "The development from 1917 with its slogan, 'Lift Oregon out of the Mud,' to the present-day system of improved highways has been gradual and has been accepted as a matter of course," continued Mr. Hall, "but in the intervening time changes have occurred, both social and industrial, as to make improved highways an imperative necessity."

The dependence of various communities on uninterrupted highway transportation is extraordinary. Rural schools have been consolidated and suburban districts have been built up. Fleets of freight carrying trucks operate day and night over the highways of the state carrying commodities and supplies of all kinds; many communities have no other type of transportation. Passenger buses on regular routes reach all important communities and cities. Farmers haul their produce to market at any time of the year, not only at less cost, but at times when prices are higher. The garden produce and milk supplies of the cities are dependent entirely on dependable highway transportation. Tourist travel has been developed entirely by our highway system.

Distribution of goods and services in the state is entirely by the highway system. Merchants today purchase their supplies for a week instead of for a year. Highway transportation makes the delivery of merchandise and supplies possible daily in practically every section of the state resulting in a lessened cost to the consumer both from transportation and carrying cost.

The state highway system, therefore, has become a most valuable asset from the economic standpoint.

According to the Oregon State Motor association, there are 920 miles of unimproved highway in the state highway system; 74 miles of this is on the Roosevelt Highway between Newport and Marshfield. It is estimated that approximately 8 years will be necessary to complete the highway system if the present rate of construction is maintained.

The state of New Mexico during the year 1927 had a 22 per cent increase in gasoline consumption.

DOOR HANDLES WILL FOIL THIEVES NOW

Oakland and Pontiac Sixes Add Another Line of Protection

A still higher margin of protection against car theft is now provided buyers of Oakland and Pontiac Sixes through a new type of outside door handle which cannot be forced by the cleverest thief.

The new door handle is so designed that the customary method of forcing with a wrench or a section of iron pipe will not give the thief entrance to the car. When such extreme pressure is applied to the handle it merely turns without releasing the door catch. A few seconds of attention at any Oakland-Pontiac service station will restore the handle uninjured to its original position.

Thus the Oakland Motor Car company, and the Fisher Body corporation which builds the Oakland-Pontiac bodies, have raised an almost impregnable first line of defense.

Should a thief effect entrance by breaking a window or because the owner forgot to lock the car, he still would be confronted by equally secure second and third lines of defense. These are provided by the semi-circular lock which locks both the ignition and the transmission with a turn of the ignition key. The transmission is locked from the dash by an ingenious sliding plunger which moves inside an armored cable extending from the ignition key down into the transmission.

The Oakland and Pontiac Sixes with their three effective lines of defense, are said to be as nearly theft-proof as any car in America.

1,000,000 Motorists A Month Use New Holland Tunnel

VEHICULAR TUBES BETWEEN NEW YORK
AND NEW JERSEY CALLED 7th
MAN-MADE WONDER
OF AMERICA

NEW engineering marvel. The Holland Tunnel, has been added to the motorist's list of "things to see" when the summer vacation season opens this year. The Holland Tunnel, one of the seven engineering wonders of the United States, will afford a connecting link between New York City and the rest of this country to approximately 1,000,000 motorists during the tourist season.

Starting from the West Coast, the tourist encounters at once one of the country's engineering wonders, The Columbia River Highway. This boon to motorists runs in a great ribbon of beautiful pavement from Portland Ore. through miles of picturesque country to join Lincoln Highway at Cheyenne, Wyo. The Lincoln Highway in turn forms a direct connection with The Holland Tunnel.

Another of the Western engineering wonders is the Los Angeles Aqueduct, which brings water to the city of Los Angeles across the arid Mojave Desert from Owens Lake 250 miles away. Like a great snake, the system of conduits and siphons stretches through mountainous country to bring thousands of gallons of water to be used for drinking, irrigation and power.

Continuing eastward, the motorist comes upon the Roosevelt Dam, the greatest engineering work in connection with the Salt River irrigation project in Arizona, an achievement which ranks first among the Federal reclamation projects. Completed in 1910 at a cost of nearly \$9,000,000, the Roosevelt Dam stands a monument of sandstone and cement to Man's achievements. The dam is ten feet taller than a 20-story building and its top length is the equivalent of four blocks in Broadway.

The reservoir created by the Roosevelt Dam is the largest artificial water body in the world. The water contained in this reservoir would cover the entire surface of the state of Delaware to a depth of one foot. The dam itself rises

MOFFAT TUNNEL, OVER 6 MILES LONG THROUGH THE ROCKIES

SCENE ALONG GREAT COLUMBIA RIVER HIGHWAY

LOS ANGELES AQUEDUCT, — GREATEST IN WORLD — IS 230 MILES LONG

UNITED STATES

ATLANTIC

TRAFFIC EMERGING FROM NEW YORK EXIT TO HOLLAND TUNNEL

IN twelve minutes through this tunnel.

Starting an eastward motor trip from the South, the tourist is directed to the Muscle Shoals Development in Alabama and Tennessee, an engineering wonder even to engineers. Here the Wilson Dam a mile long and containing 1,400,000 cubic yards of concrete, checks and releases waters which when harnessed are capable of producing 260,000 H. P. The dam was completed in 1926. Additional power units are now under construction. These, it is expected, will bring the total power produced to 512,000 H. P.

On the Canadian border of New York State is one of Nature's wonders, which has been augmented by an engineering wonder. Niagara Falls, the mighty cataract, has become one of the great centers of hydro electric power in this country. From power units at the Falls the power is distributed to points 250 miles from the falls by turbines capable of delivering more than 70,000 H. P. each. The water power development at the Falls was increased to nearly 1,000,000 horse power in 1921. This power in terms of steam generated electricity, it is estimated, would require a coal consumption of more than 10,000,000 tons per year.

So perfect is the ventilating system that tunnel air contains less carbon monoxide than that actually found by New York City Health Department analysts to be present in some of the City's streets.

The success of the tunnel has been attributed to the untiring efforts of a group of New York and New Jersey businessmen who have served without salary on the respective state commissions which built and now operate the tunnel. The Commissioners are: General George H. Dyer, Chairman, A. J. Shamburg, Frederick E. Greene, McDougall Hawkes, Albert Goldman and John J. Pullen of the New York Commission; Theodore Boettger, Chairman, Walter H. Noyes, John F. Boyle, Robert S. Sinclair, John B. Kates, Frank L. Supple, Isaac Ferris and Thomas J. S. Barlow of the New Jersey Commission.

120,000 H.P. ELECTRIC PLANT AT MUSCLE SHOALS, ALABAMA.

THE GIANT, ROOSEVELT DAM IN ARIZONA