

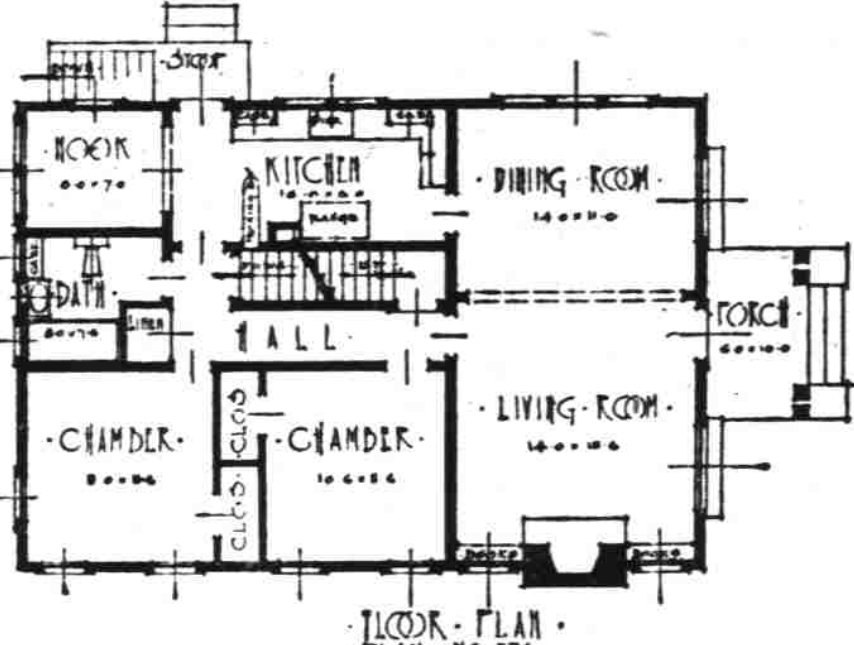
PLAN No. 574

Five major rooms are provided in this floor plan. The house exterior is of rather conventional design, but attractive and well suited for the medium class residential district.

An attractive feature of the plan is the high archway between the living room and dining room, making them virtually one large room extending across the front of the house. The effect can be heightened further by interior decoration and placement of furniture.

The kitchen is at the rear of the dining room and is of convenient size and layout for work by the housewife. A large number of built-ins are provided. The breakfast nook is at the rear of the kitchen and separated sufficiently to amount to an additional room.

The two bedrooms are on the opposite side from the kitchen and reached through an "L" shaped central hall, which also opens into the bathroom and the stairways leading to the basement and upper story. Sufficient space is provided in the upper story for two small rooms.



## Spaulding Logging Co.

Salem, Oregon

Telephone 1830

## DURANT INCREASE FOR MONTH MARKED

Pacific Coast Factory Output Nearing 150 Car Mark Per Day

Scoring a distinct gain in sales and popularity, the Durant climbed during the first half of April from nineteenth to sixth place in motor car registrations for Northern California, according to figures released recently by Motor Registration News.

To supply the demands of the public the Pacific Coast factory production has been steadily increased and is now nearing 150 cars daily. With the continuance of this production the Durant Motors' officials on the coast believe the Durant will finish the month in fourth and possibly in second place in registrations. During March the Durant dealers were greatly handicapped by lack of cars both for display and delivery purposes. Some of the models were not at that time in production. Now the factory has attained full production and all models are being built. All dealers have cars for display. The factory is working overtime to fill the huge number of orders on hand, and there is every indication that the Durant will go higher in the registration standings.

Taking registrations by cities, the Durant led all makes in 25 cities and was second in twelve others. Durant was third in Oakland; only two cars, both of which have maintained registration leadership for years, were ahead of the new model Durants. Durant was first in registrations from Stockton with a total of 15 cars for the first two weeks of April. Its nearest competitor, with a registration of nine cars, was a four cylinder automobile which has held the leadership for several months.

Durant was first in such representative cities as Stockton, Corning, Red Bluff, Monterey and Forterville. Durant was second in Alameda, Martinez, Lodi, Burlingame and Turlock. Figures for southern California are not yet available, but reports from dealers indicate that the Durant will be close to the top in registrations there.

This great Durant success in such a short period of time is ascribed to the introduction of a complete line of beautiful, powerful sixes and to the improvements made in the already powerful four, formerly known as the Star. The Sixes, called the Silver Anniversary Sixes and built to commemorate W. C. Durant's twenty-five years of success in the Automotive industry, are produced in three series, called the "55", "65" and "75". These cars bid fair to establish an enviable record for themselves both for performance

and sales in their first year on the market.

All of the Durant models are powered by high-compression Red Seal Continental motors. The "75", largest of the line and mounted on a 119-inch wheelbase, is equipped with four speeds forward. All models of the Durant line have thermostat heat control. Bendix four-wheel brakes, positive and smooth in action, are standard equipment on the line. The wheelbase of the Durant Four is now 107 inches, four inches longer than formerly. The wheelbases of the "75", "65" and "55" are 119, 110 and 107 inches respectively.

## CAR'S PERFORMANCE MEETS WITH PRAISE

Cannonball Baker Says Record Breaking Transcontinental Trip Tribute

Commenting on the recent record breaking performance of the Falcon-Knight Six which has established a new transcontinental speed record of 73 hours and 47 minutes from Washington, D. C., to Los Angeles, a distance of 3,198 miles, Cannonball Baker, noted cross country driver who piloted the car said:

"I had implicit confidence in the Falcon-Knight sleeve-valve engine at the start of the record breaking trip and all that was left for me to do was to 'step on the gas' and prove the speed, stamina,

endurance, acceleration and power of this type of engine."

Baker clipped six hours and eight minutes off the former world's record for transcontinental travel, the run being officially timed by the Western Union.

"This feat of the Falcon-Knight had never before been accomplished by any motor car. The car traveled most of the time at top speed, maintaining a steady pace with apparent ease and without any strain on the engine. We encountered snow, rainstorms, strong headwinds, freezing weather and hot sun. In all it was a truly remarkable performance and the new record is one which is an outstanding tribute to the Falcon-Knight sleeve-valve engine and will stand for a long time to come."

The record breaking run was a continuous one the time of 73 hours and 47 minutes including all stops that were made enroute. The Falcon-Knight was checked out of the national capital at 1:30 a. m. March 27 and at 12:17 a. m. March 30, it quietly glided up to the finish line at Los Angeles and the time, both start and finish were attested to by Western Union officials who were present both at the start in Washington and the finish in Los Angeles.

Spring is at hand and automobile owners are beginning to think of trips and vacations. Sound advice to these motorists is to have their automobiles thoroughly inspected. Brakes especially should be looked after.

"The average full-grown gaffe's tongue is two feet long," just the right length to lick the ice cream out of a freezer can.—Detroit News.

## ONE MOTOR VEHICLE TO 5.13 PERSONS

More Than Twenty-Three Million Cars Registered During 1927

More than twenty-three million motor vehicles were registered in 1927, according to information collected from state registration authorities by the bureau of public roads of the United States department of agriculture. The total registration of 23,127,315 vehicles was composed of 20,230,429 passenger vehicles and 2,896,886 motor trucks and road tractors. This registration represents an increase of 1,126,922 vehicles or five per cent more than in 1926. Using the population estimate for the middle of last year, there was one more vehicle for every 5.13 persons.

States with a registration increase of 10 per cent or more are North Carolina, South Carolina, Utah and Arizona. States with a numerical increase of over 50,000 are New York, California, Ohio, Illinois, Texas and New Jersey.

As in other recent years, motor vehicle registration receipts constituted a substantial contribution to funds for road construction. The total receipts from registration fees and licenses amounted to \$301,061,132. These funds were allocated as follows: collection and administration \$14,876,410; state highways \$189,985,289; local roads \$53,577,893; payments on state and county road bonds \$38,087,598; and for miscellaneous purposes \$4,533,942.

The total motor vehicle registration by states was as follows:

Alabama	243,539
Arizona	81,047
Arkansas	206,568
California	1,693,195
Colorado	268,492
Connecticut	281,521
Delaware	47,124
Florida	394,734
Georgia	300,635
Idaho	101,336
Illinois	1,438,985
Indiana	813,637
Iowa	704,203
Kansas	501,901
Kentucky	285,621
Louisiana	255,000
Maine	163,623
Maryland	270,935
Massachusetts	694,107
Michigan	1,154,773
Minnesota	646,682
Mississippi	218,043
Missouri	682,419
Montana	112,735
Nebraska	373,912
Nevada	25,776
New Hampshire	96,009
New Jersey	712,396
New Mexico	59,291
New York	1,937,998
North Carolina (1)	430,499
North Dakota	160,701
Ohio	1,570,734
Oklahoma	503,126
Oregon	244,572
Pennsylvania	1,554,915
Rhode Island	118,014
South Carolina	199,635
South Dakota	169,552
Tennessee	294,567
Texas	1,111,407
Utah (2)	93,976
Vermont	79,527
Virginia	337,607
Washington	384,583
West Virginia	245,819
Wisconsin	698,289
Wyoming	51,955
Dist. of Columbia	111,680
Total	23,127,315

(1) Last six months of year's registration only as year commenced July 1.  
(2) Preliminary data, subject to revision.

## NEW TIRES SHOULD POSSESS NEW TUBES

Life of Average Inner Tube Considered No Longer Than Tires

An investment in a new automobile tire should be protected by

equipping the tire with a new inner tube when it is installed.

"Car owners often hesitate to buy a new inner tube when purchasing a new tire, especially if the old tube appears to be in good condition," says Willis Clark, local manager of the Western Auto Supply Company. "Owners of passenger cars can profit by the experience of truck and bus fleet operators who have found that it is economical in the long run to install new tubes in new tires. The small cost of a new inner tube does not warrant the incurred risk of ruining or weakening a tire casing through failure of a weak inner tube."

"The life of the average inner tube is no longer than the life of the tire and although mileage is often quickly accumulated and casing wear out rapidly, it is advisable to install new tubes when new tires are purchased as the intense heat from friction 'burns out' the life of the tube and causes rapid deterioration. Constant flexing of the sidewalls at the point of tire flap contact tends to weaken the tube."

"Uninterrupted tire service rests largely upon the quality of the inner tubes used. With satisfactory service depending upon their performance it is plainly more economical to install good, heavy tubes in new tires than those of inferior quality or old tubes."

"For the past twelve years the Western Auto Supply Company has been satisfactorily filling the inner tube needs of western car owners. The Jumbo tube, so named for its extreme strength and additional weight, is made by the laminated process with the many layers of vulcanized rubber forming one, round, air tight unit. Due to its extra thickness the Jumbo tube does not pinch or puncture readily and stands wear so well that a two year guarantee against defects in materials or workmanship has been placed upon it."

Guest—Your dinners are always a success, Mrs. De Smythe. How do you select your menus?  
Hostess—The doctor has given me a list of things I mustn't eat, and I choose the dishes from that.—The Pathfinder.

There are 1,320,000 Smiths in the United States, and about 500,000 of them are voters. Al's their chance.—St. Louis Globe Democrat.

A U. S.-British radio war is said to be practically certain. Doubtless we will soon be getting broadside of static from the other side of the Atlantic.

## HIGHWAY CURVE BUILT ON ANGLE

(Continued from page 1.)

The test curve, which is expected to be duplicated elsewhere in the state, has a 200-foot radius, and a spiral length of 150 feet was used, of which half was placed on the tangent (back of point of curvature), and half on the simple curve (ahead of point of curvature). A widening of 5.4 feet was used, plus an additional width of 1 1/2 feet for convenience in placing the guard rail.

Such a highway must be surfaced with gravel or other cohesive material, Newcomb said, to prevent slipping when wet.

## LZICARS RETURN ENJOY FINE TRIP

(Continued from page 1.)

ing facilities consist of nine large factories occupying over three million square feet. In normal time over seventy-five hundred people are employed. In the United States the Oakland and Pontiac Sixes are distributed by more than forty-three hundred dealers located in every section of the country.

"General Motors proving grounds were most interesting, as they have one of every late model car manufactured in the United States and most of the foreign cars. All cars are given the same test in order to learn the good and bad points of each."

"Our return trip was mostly over the Lincoln Highway to Salt Lake City, making stop-overs in Iowa and Nebraska."

"Road conditions were exceptionally good with very little snow in the mountain passes."

"The most beautiful scenery of all was the Columbia Highway

drive. The entire trip of 7063 miles was made in an Oakland Landau sedan at a total gas and oil expense of \$102.80 and 90c for light bulbs and no other car expense. This distance was covered in seventeen and one-half days of actual driving.

## MILLER TIRE TEST CARS SHOW ECONOMY

(Continued from page 1.)

season. Hot pavements and hot in the north during the winter weather contribute greatly to tire wear, and tire testing in a warm climate furnishes data with which Miller engineers study the wear in the interest of still better tires."

## PACIFIC GOODRICH FACTORY TO OPEN

(Continued from page 1.)

the process through manufacturing, vulcanizing and finishing, and ending with the product ready for distribution at the other end.

A special program will also be broadcast from New York earlier the same day through the Red Network and the National Broadcasting system. Combining the broadcasts of the two chains—the eastern and the western—the programs dedicated to the New Pacific Goodrich Factory many millions of listeners through a total of thirty-six powerful radio stations.

## TOURISTS SHOULD TAKE CARE OF CAR

(Continued from page 1.)

Fill cells to recommended level with distilled water.

"Generator—If device is not automatically controlled as to output, have charging rate reduced for the tour. It diminishes the load on the generator, while turning on the lights serves no other purpose than to keep the battery from becoming over-charged, which is not so likely as generally believed."

"Distributor—Clean and adjust breaker points. Apply a thin film of grease to the cam."

"Spark Plugs—Clean and check points for condition and clearance. Replacement, if the plugs have seen a year's service, is generally advisable."

"Valves—It will pay to have the valves ground if this has not been done for 7,500 miles, regardless of the gasoline one uses. Valves must seat properly for ef-

ficient engine performance. For the tour, it is not wise to adjust them too closely. This means quick valve deterioration and poor performance. Look sharply for burned exhaust valves during the grinding process."

"Carburetor—Clean strainer at bottom thoroughly. If mixture is suspected of excessive richness, have it adjusted by an expert."

"Fuel Feed System—Drain traps at bottom of main gasoline tank and vacuum tank. Blow out the feed lines."

"Clutch—If the release bearing is not the self-lubricating type, take up one turn on the grease cup, the commonly used substitute. Be careful not to turn down the cup so far as to get grease on the plates. Slipping of the clutch is sure to follow."

"Transmission and Differential—Drain and flush case and housing and fill up with fresh lubricant."

"Crankcase—Drain out old oil flush with light oil, and refill with the normal—not heavy—lubricant unless the car is accustomed to that grade."

"Oil Filter—Inspect the cartridge or straining unit. If it has seen 10,000 miles of service and is the non-cleanable type, buy a new one."

"Steering—Check for wear, looseness, or binding, and lubricate thoroughly. Hours at a wheel that works hard are exceptionally fatiguing and dangerous."

"Brakes—Check for wear of linings and positiveness of equalization. Strange roads and high speeds call for perfect brakes."

"Tires—Don't tempt fate with tires that are badly worn. Wear out the old ones in day-to-day service not on the tour. High speeds call for higher tire pressures. From three to five pounds over the normal is essential."

# Why Take the Risk?

## BUY YOUR TIRES WITH PROTECTION

We Issue a Service Certificate of Protection through the National Tire Service Incorporated, with each tire purchased, protecting you against accidents, negligence, cuts, bruises, blowouts, rim-cuts, wheel alignment or any hazard of the road.

U. S. Tires, Goodrich Tires, Fisk Tires

## Salem Vulcanizing Works

474 Ferry St.—Phone 364  
W. M. Hughes, Proprietor Salem, Oregon



Wearwell Cords	
Guaranteed 8,000 Miles	
Our low prices on these full standard weight tires with thick, tough, road-gripping treads, offer tremendous savings to car owners of the West. Allowance for old tires, too!	
Size	Our Low Price
30x3 1/2 Cl. Reg. Size	\$ 5.37
30x3 1/2 Cl. Reg. Size	\$ 5.65
30x3 1/2 S. S. Oversize	\$ 6.13
30x3 1/2 S. S. Oversize	\$ 7.46
31x4 S. S. Oversize	\$ 9.12
32x4 S. S. Oversize	\$ 9.40
32x4 S. S. Oversize	\$ 10.12
32x4 1/2 S. S. Oversize	\$ 11.70
32x4 1/2 S. S. Oversize	\$ 15.25
33x4 1/2 S. S. Oversize	\$ 15.90



Wearwell Balloons	
Guaranteed 12,000 Miles	
Our low prices on these full standard weight tires with broad, ribbed non-skid treads. Look at these low prices...and remember our trade-in allowance on your old tires!	
Size	Our Low Price
29x4.40 Balloon	\$ 6.62
30x4.50 Balloon	\$ 7.57
29x4.95 Balloon	\$ 9.64
30x4.95 Balloon	\$ 9.74
30x5.25 Balloon	\$ 10.40
31x5.25 Balloon	\$ 11.26
30x5.77 Balloon	\$ 12.30
33x6.00 Balloon	\$ 14.15

# "Western Auto's" Semi-Annual New Customer-TIRE SALE

Last Day—Saturday, May 5th

JUST a few more days of these worth-while savings on long-wearing "Western Auto" tires. Just a few more days to prepare for Spring trips with tires that are guaranteed by the World's largest retailers of Tires and Auto Supplies...backed by our "150 Store Service" and by our policy... The customer is always right!...

Already, this Great Sale has brought us many new friends...large numbers of our customers too, have come to our conveniently located stores to grasp these greater values. Wait no longer...Go at once to your nearest "Western Auto" store and save on new, fresh stock of "Western Auto" tires...and, don't forget...

—TRADE IN YOUR OLD TIRES— They will help pay for new, guaranteed Wearwell or Western Giant...at any "Western Auto" store, and make your savings even greater.

## Tires Mounted FREE!

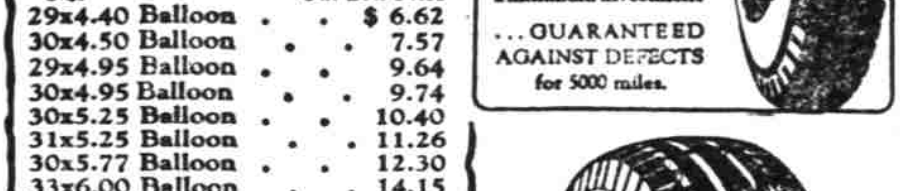
## Wasco Cord

Size	Our Low Price
30 x 3 1/2	\$4.42
29 x 4.40	\$5.56

These 4-ply tires are full standard size and weight...new, fresh stock, well made and fully guaranteed.

Wasco Tires are especially recommended for the motorist who does not require a tire for very hard service, and who wants to make a minimum investment

... GUARANTEED AGAINST DEFECTS for 5000 miles.



Wearwell Balloons	
Guaranteed 12,000 Miles	
Our low prices on these full standard weight tires with broad, ribbed non-skid treads. Look at these low prices...and remember our trade-in allowance on your old tires!	
Size	Our Low Price
29x4.40 Balloon	\$ 6.62
30x4.50 Balloon	\$ 7.57
29x4.95 Balloon	\$ 9.64
30x4.95 Balloon	\$ 9.74
30x5.25 Balloon	\$ 10.40
31x5.25 Balloon	\$ 11.26
30x5.77 Balloon	\$ 12.30
33x6.00 Balloon	\$ 14.15

Ask for Sale Prices on days not listed.

# Western Auto Supply Co.

More than 150 Stores in the West—  
210 N. Com'l St., SALEM  
TELEPHONE 796

The World's largest... Serving the motorist since 1909... Complete lines of guaranteed Accessories, Tires, Camp Goods, Radio.

## Maruna &amp; Harnsberger

## U. S. L. Battery Service

AUTOMOTIVE ELECTRICIANS—  
215 Center Street

IN CONNECTION WITH THE  
CAPITOL SUPER SERVICE STATION

## Ford Size Battery

With 1 Year Guarantee \$7.50  
And Your Old Battery

TELEPHONE 1915

CORNER FRONT AND CENTER

OPEN SUNDAYS AND EVENINGS

