

Silks Exterior and Interior Paints
House Paints, Barn Paints and Stains
Manufactured in Salem

Guaranteed white lead and linseed oil base, manufactured by experts with more than fifteen years' experience with the largest paint manufacturers. Cut your paint cost. Buy a home product direct from the factory. Save \$1.50 per gallon. Phone us for free estimate on painting and suggestions.

White Lead Oil and Turpentine
 Varnish for Less

Factory 2649 Portland Road Phone 2786

SIZE OF DOUGLAS FIR TREES MARKED

Huge Hollowed-Out Log Mounted on Truck and Sent Over Country

LONGVIEW, Wn., April 18—The immense size to which Douglas fir trees of the Pacific Northwest grow is being forcibly impressed on the minds of people on the Atlantic Coast by a huge hollowed-out log mounted on a truck and trailer which is being taken through the East under the auspices of the West Coast Lumber Bureau, with headquarters here.

The log, which is more than eight feet in diameter and contains a two-room apartment, is being driven from town to town home in the log E by A&D and ad by E. A. Wade, who, with his wife, makes his home in the log. During the past two years, Mr. Wade has traveled with his log house down the Pacific Coast from Washington and back and forth through the Middle West and Southwest states.

The log is being displayed particularly in towns where Bureau fieldmen are holding meetings with retail lumber dealers and is being used by many dealers as a

means of creating local interest in West Coast lumber.

WILLYS WILL OPEN ASSEMBLY QUARTERS

Announcement Made Recently By President of Organization

TOLEDO, O., April 21.—Production and sales of Willys-Knight and Whippet motor cars in March reached the highest peak in the company's history, according to a statement made here today by Willys-Overland executives.

During the month 32,723 cars were sold, a 17 per cent increase over the highest previous month. This is a gain of 28.5 per cent over Whippet and Willys-Knight sales in March of last year.

March production of 31,129 units is the largest month in the company's history. This is a gain of 19 per cent over the previous highest month and a 28 per cent increase over March of last year. It was also announced that production of Willys-Overland products reached the highest daily mark in history on April 19 when a total of 1,738 cars was produced.

This statement was made immediately following the introduction of the new Whippet Six at the lowest price ever fixed by any manufacturer of six cylinder cars.

Production at all Willys-Overland plants has been maintained at high tide since early in January when John N. Willys, president, announced to the world that "there can be no monopoly in the light car field," and then slashed prices on the Whippet which placed the four cylinder cars in direct price competition with the new Ford models.

This move resulted in the heat-

est buying demand in Willys-Overland history which has continued without recession every since. Each month since the Whippet price reduction, new high sales and production records have been made by the Toledo manufacturer.

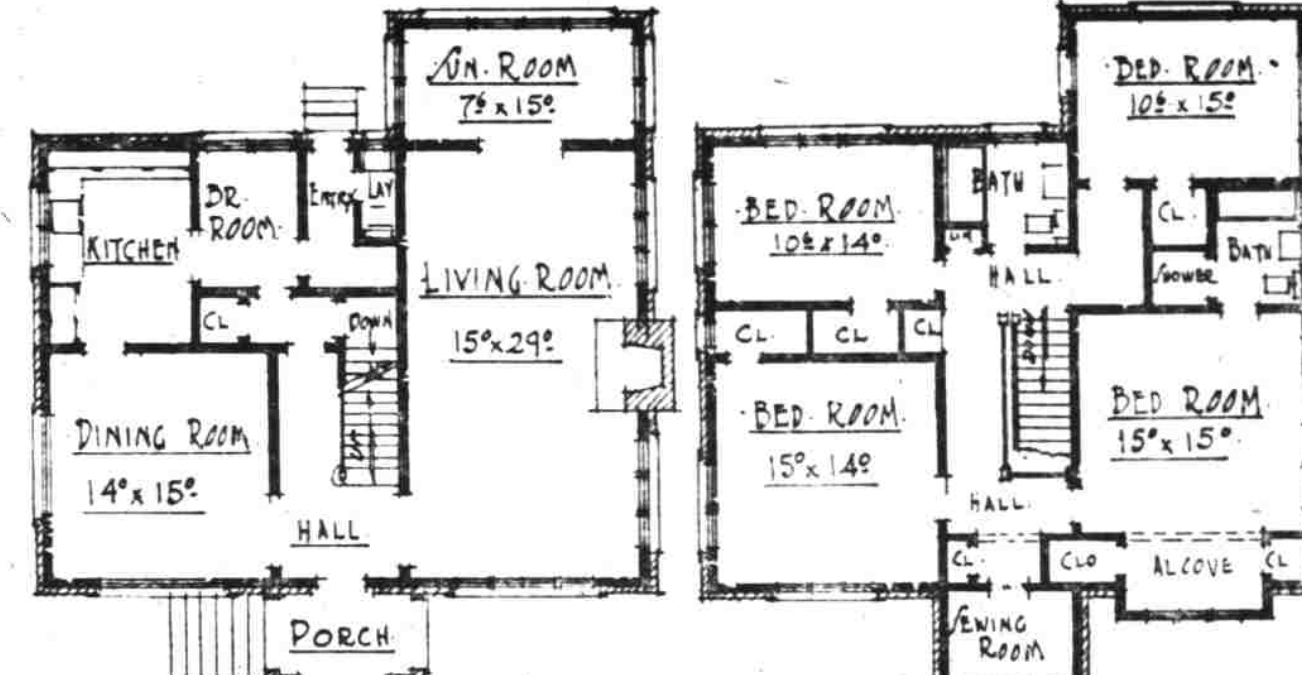
Scarcely less sensational was the recent price reduction on the new Willys-Knight Standard Six, bringing a Willys-Knight Six under the \$1,000 mark for the first time in history. It was stated at the factory that this move has resulted in an increased demand for the Knight-engine six since it opens a new market for this type of car to buyers who were formerly prevented from owning a Willys-Knight six while they sold in a considerably higher price range.

With the introduction of the new Whippet Six, equipped with a highly developed engine featuring a seven-bearing crankshaft, the interest of the buying public in this new car is reflected in the hundreds of thousands who visited the various Willys-Overland showrooms throughout the nation at its initial showing.

Well informed automobile men declare that the introduction of the new Whippet Six with a seven-bearing crankshaft will undoubtedly set a new trend toward higher quality in the lower priced sixes. At the time he announced the new car Mr. Willys said that it was in line with the company's policy to incorporate features of higher priced cars in the lower price ranges.

It is reported that employment at all Willys-Overland plants is at capacity, with 19,500 on the factory payroll at Toledo. This is 20 percent higher than any previous employment figure, it was said.

LANG SHOWS HANDWORK LEIPSIK, Germany — Anton Lang, impersonator of Christ at the Oberammergau Passion plays, exhibited hand-shaped ceramics at the street fair here, and said he sells many to Chicago department stores.



THE SALEM DESIGN A-6

This brick home designed and recently built in the Northwest combines maximum space with economy. Extra large living room and sunroom with ample dining room feature the first floor. Two large bedrooms, two smaller ones, ample shower and bath room facilities and a convenient sewing room make the upstairs especially attractive for large family occupancy. The complete plans are available through the Pacific Northwest Brick & Tile Association, 913 Arctic Bldg., Seattle, for \$25.



"Specifications for building a good home:—In the center place Love. Surround it with practical sense. Specify the Right Lumber and be assured of Permanent Comfort."

—Says Practy Cal.

LUMBER and All Building Materials
Gabriel Powder & Supply Co.
 Office, Yard and Warehouse
 610 North Capitol Telephone 2248



At times change mother insists upon a modern kitchen sink placed at a height to suit her stature, and dad demands bathroom comfort.

"When you need a plumber, you need a good one!"
H. EGNER
 1225 N. 22nd Telephone 1310W
 Fine Fixtures Standard Equipment



House Moving
 House Wrecking
 Heavy Machinery Installed
 Foundation Work Stack Raising

We are equipped to handle your city or country work quickly and economically.
 We also buy and sell buildings to be moved or wrecked.
 Call on us at once. You will find that our work will be satisfactory and our prices very reasonable.

We Rent JACKS AND ROLLERS FOR HOUSE MOVING
 LET US SAW YOUR WOOD
KUSEL BROS.
 2173 State Street



Screens
 Made or Made to Order

Before warm weather sets in have those old, antiquated screens replaced with fly-proof new ones.

Call us and we will be glad to give you an estimate on the cost of new screens or make them to your order.

J. W. Copland Yards
 WEST SALEM TELEPHONE 576
 "Dependably Serving the Lumber Consumer"

MIKADO
 Have Your Scribbles Analyzed
 The Yellow Pencil with the Red Band
 Louise Rice, world famous graphologist, can positively read your talents, virtues and faults in the drawings, words and what notes that you scribble when "lost in thought".
 Send your "scribbles" or signature for analysis. Enclose the picture of the Mikado head, cut from a box of Mikado pencils, and ten cents. Address Louise Rice, care of EAGLE PENCIL CO., NEW YORK CITY

Your Building
 Should Be Properly Planned, Designed and Constructed or You Will NOT Realize the Utmost From Your INVESTMENT.
 Employ An Architect
F. H. STRUBLE
 Architect
 512 Bank of Commerce Building
 SALEM OREGON

ANNOUNCING
The Opening
 OF THE
Building Supply Company

IN ALLEY BACK OF LADD & BUSH BANK BETWEEN STATE AND FERRY STS.

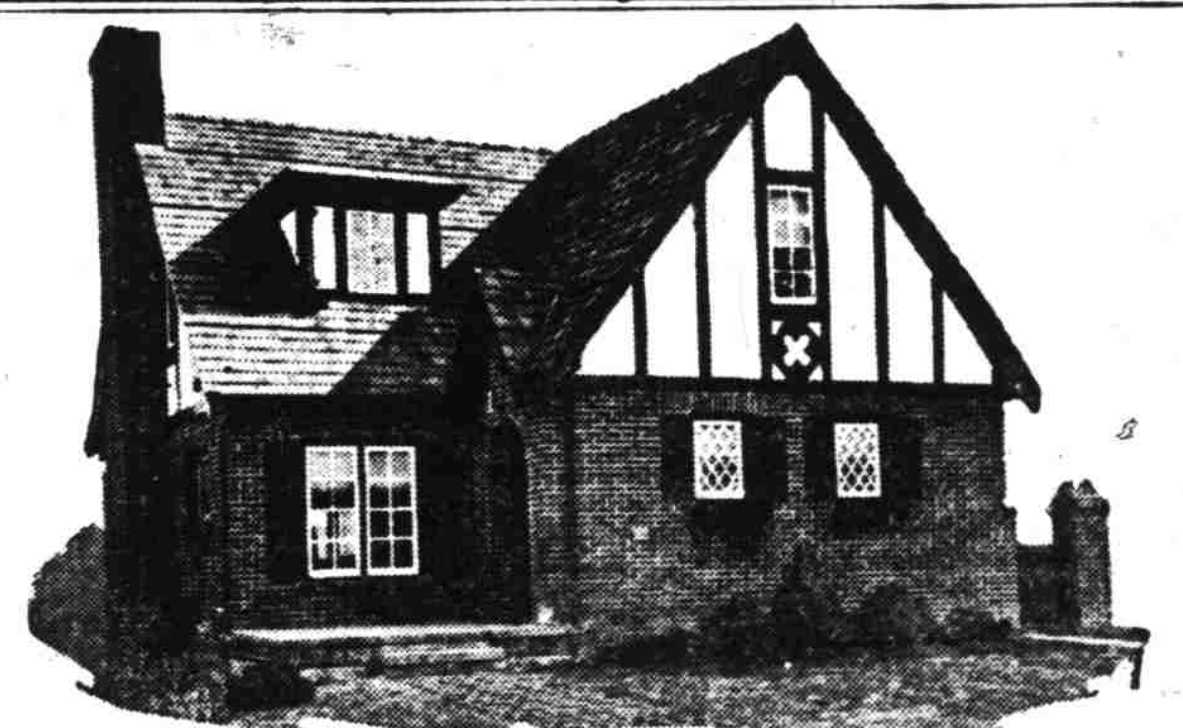
PHONE 1859

- BUILDING MATERIAL OF ALL KINDS**
- | | |
|---------------------------------|----------------------|
| Certainite Paints and Varnishes | Inside Finish |
| Edward's Medicine Cabinets | Frames |
| Truscon Steel Sash | Building Specialties |
| Sash and Doors | Hardwood Flooring |
| Nilsson's Wall Paper | Cedar Shingles |

PHONE US FOR PRICES

We will be glad to furnish estimates on any material we carry

"BUY IN THE ALLEY AND SAVE"



Only \$72 More Per Room for These Solid Brick Walls

In the Walls — there's the difference
 The rest of the house is the same

This five-room house has 1,936 square feet of total outside wall area above the ground

To erect these walls in SOLID BRICK or Brick and Hollow Clay Tile, complete for all labor and materials, furred for lath and plaster on the inside, would cost **\$940**

For the same walls in ordinary construction complete for all labor and materials, including two-coat painting and also ready for lathing and plastering on the inside, using the same grade of labor and materials, it would cost **\$580**

THE DIFFERENCE—only **\$360**

The chimney is not figured in either case as it is common to both houses
 So for only \$72 per room in this case the owner of this solid masonry-walled rooms gets walls of permanent beauty that need no paint and do not warp or shrink—walls that are cooler in summer and warmer in winter—walls that afford high fire protection and a low insurance rate.

It is economy to build with brick.

PACIFIC NORTHWEST **BRICK** AND TILE ASSOCIATION
 for Beauty
 Seattle
 913 Arctic Bldg. ELIott 3643
 IN SALEM, SALEM BRICK & TILE CO.