

## DAY BROADCASTING BECOMES POPULAR

San Francisco Station Offering Excellent Program Each Day

Daylight broadcasting is coming into its own. KPO, the Hale, Chronicle station at San Francisco, is offering a most interesting, attractive and diversified schedule between the hours of 6:45 a. m. and 6 p. m. daily.

Music, in many forms of presentation will reach the audience. Gypsy and Maria, the adorable pair of harmony singers, known from coast to coast, are a regular 11 to 11:30 a. m. feature, and are presented by the Charles Arno company, distributors of Arno Steamers and Arnail.

A splendid concert by the KPO Instrumental Trio, a piano, violin and cello combination of consummate skill, is a regular 1 to 2 o'clock presentation.

David Kane's Hawaiians, Victor artists, hold forth daily from 11:30 to 1 o'clock. Native instruments and quaint melodies make a novel program.

KPO's Bill Broder, the dearly loved director of the children's program from 5 to 6 o'clock. This hour is replete with timely readings, appropriate musical renditions and constructive entertainment.

During the baseball season, Jack Keough, KPO's popular young sports announcer will broadcast play by play reports of the games daily except Monday. Last year's presentations established Jack Keough as a success.

Hugh Barrett Dobbs, assisted by William H. Hancock, begins the day at 6:45 with invigorating and stimulating exercises "for body and spirits," followed by the Shell Happy Time from 8 to 9 o'clock, presided over by these two "emanations of pep and personality." Dobbs and Wee Willie.

Of tremendous interest to women are the daily talks offered, on art topics, fashion, home economics, cookery, housekeeping short cuts, etc.

All this makes for worthwhile daylight broadcasting, and is bound to compel the interest of the radio public.

## WAR AND RADIOS BRING OUT IDEAS

Composers in United States Got Busy With Excellent Results

The European war and the development of radio have brought about a new "declaration of independence" in America, according to Sigmund Romberg, composer of "The Student Prince," "The Desert Song" and other popular light operas, who will be heard on the air for the first time in the Chevrolet hour of the General Motors Family Party on Monday evening, March 19.

"Prior to 1914," says Romberg, "most of the musical shows produced in this country were brought over from Vienna. When war was declared it became difficult to continue using European compositions, so composers in the United States began to assert themselves and now radio has made their songs known throughout the country. As a consequence, America today leads the world in musical productions."

"The only reason we do not send more American-made light operas to Germany and Hungary is that they can't afford to pay for them. The English take all shows we give them. Very few musical shows are produced in England or Europe now because most of their best composers are working in this country."

Romberg was born in Hungary and studied to become a construction engineer. He never attended

## RADIO DIRECTOR ASSERTS MARRIED SINGERS ARE BEST



*The married singers are undoubtedly the best.*

*You're all just Mr. Johnson for instance, Mary Garden!*

Floyd B. Johnson, director of an air station in Chicago, is confident that marriage improves the voice of any singer. So much so that he has made that claim for the wedded stars, citing John McCormack, Schumann-Heink, Chaliapin and others to prove his point. Friends of Mary Garden, foremost among the unmarried stars, have come forward to refute Johnson's remarks.

a musical school but took lessons casually from private teachers and did not become a professional until he came to America nearly twenty years ago. Since then he has become one of the foremost modern composers. His first offerings were of the popular song-hit type, and were found in "The Whirl of the World" at the Winter Garden, which he wrote in 1913, and in "The Passing Show of 1914," for which he also composed the music. He was one of the first musicians to evolve the "revue" type of entertainment. In later years he has achieved unusual distinction in the field of light opera with Blue Paradise, Maytime, Girl From Brazil, Her Soldier Boy, Sinbad, Music Melody, Bombo, Desert Song, Blossom Time, Student Prince, Princess Flavia, My Maryland, Love Song and Rosalie.

In the Chevrolet hour on the nineteenth, Romberg will play his most melodious and best known selections at the piano, with orchestral, band and vocal accompaniment. It will be a "Romberg Hour," similar to the "Friml Hour" offered by the same sponsor a month ago.

## NATIVE COMPOSER WILL GIVE PROGRAM

Daisy Wood Hildreth, American composer, will appear in person this week in an entire program of her own compositions to be broadcast Thursday by the stations of the ABC chain.

The recent ABC broadcast featuring Charles Wakefield Cadman was heartily applauded by Northwest radio listeners, and the Hildreth program promises to be equally interesting.

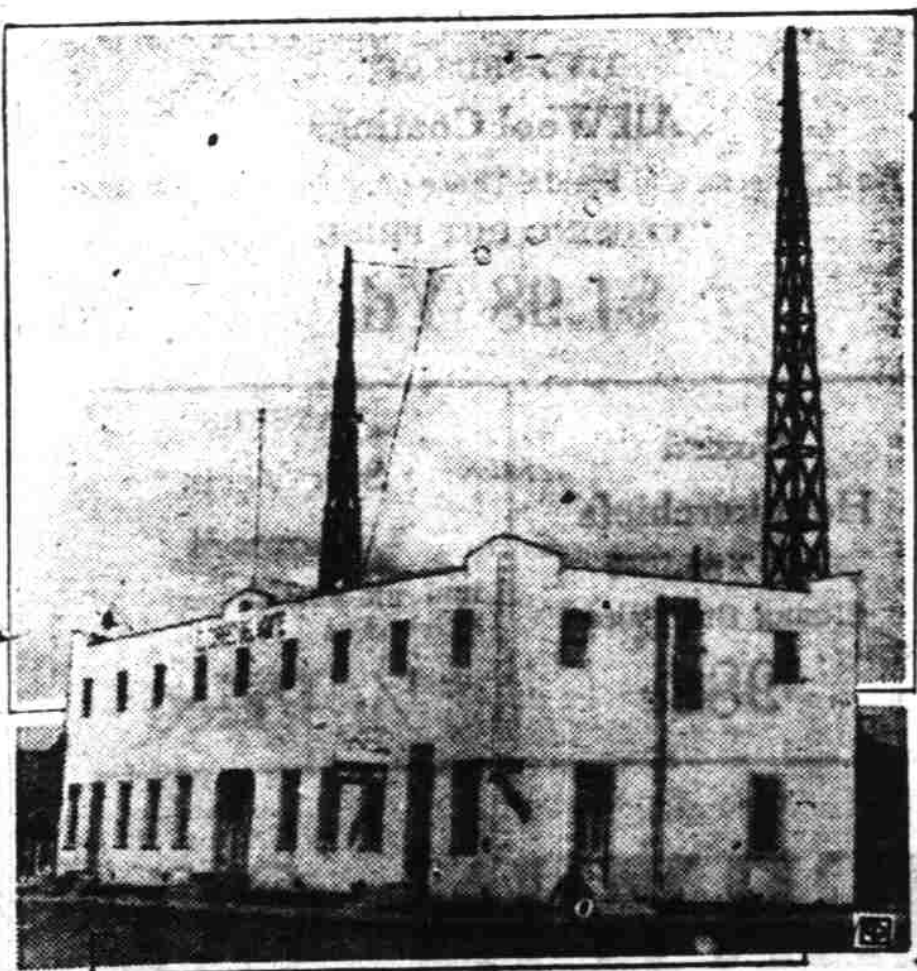
Florence Beeler, mezzo contralto who was heard on the Cadman program will also be the assisting artist for the concert this week, singing "The Blind Girl," "The Road to Kinsay," and other famous songs of Daisy Wood Hildreth.

The composer will preside at the piano, and the second assisting artist will be Margaret Lang, violinist. This program will be broadcast from 8:30 to 10:00 o'clock Thursday evening by stations KEX, Portland; KJR, Seattle; and KGA Spokane.

The German postal chief has decreed that women postal employees during working hours must wear skirts eight inches below the knee. This, no doubt is to prevent interfering with the males.

Read the Classified Ads

## MEXICO STRETCHES RADIO ARM



Since changing its call letters and enlarging its scope, station CYE at Tijuana, Lower California, Mexico, may be heard throughout the length of the Pacific coast. This photo shows the masts and antenna of the Tijuana station.

## ATTWOOD AND BAND TO BE ATTRACTION

Program Will Be Broadcast During Chevrolet Hour On Monday Evening

Martha Attwood, soloist of the Metropolitan, and Sigmund Romberg, composer of "Student Prince," "Blossom Time" and "Desert Song," assisted by a symphony orchestra and a concert band, will give a Romberg program in the Chevrolet hour of the General Motors family party on Monday evening, March 19. The occasion will mark the celebration by the members of the big automotive "family" of a new record in the motor industry—the sale and delivery of 250,000 new model Chevrolets since January 1.

Romberg will be heard on the air for the first time when he plays a number of his more melodious selections at the piano. In addition to Miss Attwood, a baritone soloist, and a male octette will also sing some of the better known Romberg songs. It is expected that the programs will be as distinctive and enjoyable as the "Friml hour" presented by the same sponsors a month ago.

The program, to be sent over thirty-two stations from the new studios of the National Broadcasting Company in New York follows:

Blossom Time—Selections..... Orchestra  
Featuring "Song of Love"..... Miss Attwood and Baritone  
Mr. Romberg at Piano  
"Omar Khayyam"—Pameling Show 1914..... Mr. Romberg  
"When Hearts are Young"—Lady in Ermine, Miss Attwood accompanied by Mr. Romberg and Orchestra  
Maytime—selections..... Orchestra  
"Will You Remember"..... Miss Attwood and John Donald Parker  
Love Call—Selections..... Orchestra  
"Eyes That Love"—"I Live, I Die for You," "Tis Love"..... Blue Paradise..... Mr. Romberg at piano in paraphrase on "Auf Wiedersehen"..... Male Octette and Orchestra Closing with ensemble  
My Maryland—Selections..... Orchestra  
Featuring "Silver Moon"..... Miss Attwood and Baritone Mr. Romberg at piano  
Desert Song—Selections..... Orchestra  
Novelty Orchestra  
"West Point March"—Rosalie..... Medley of airs from "Twilight Voices"—Princess Flavia  
"Little Peach"—Louis XIV..... Band  
Student Prince—Selections..... Orchestra  
"Students March Song"—"Serenade" John o'Donald Parker  
"Drinking Song"—Male Octette  
"Deep in My Heart"—Miss Attwood and John Donald Parker

## SAYS RED PEPPER HEAT STOPS PAIN IN FEW MINUTES

Rheumatism, lumbago, neuritis, backache, stiff neck, sore muscles, strains, sprains, aching joints. When you are suffering so you can hardly get around, just try Red Pepper Rub. Nothing has such concentrated, penetrating heat as red peppers, and when heat penetrates right down into pain and congestion relief comes at once.  
Just as soon as you apply Red Pepper Rub you feel the stinging heat. In three minutes the sore spot is warmed through and the torture is gone.  
Rowles Red Pepper Rub, made from red peppers, costs little at any drug store. Get a jar at once. Be sure to get the genuine, with the name Rowles on every package.

—Adv.

## STATIONS ASKED TO MARK TOWERS

Considerable Aid to Flying Would Be Done by Correct Marking

WASHINGTON (AP)—To eliminate a serious hazard to aviation which is developing rapidly in commercial centers, the Federal Radio Commission may find it necessary to order owners of broadcasting stations to mark their towers in order to increase the visibility to fliers.

Aeronautical experts of the Army, Navy and Commerce departments have approved methods of marking air navigation obstructions such as radio masts, transmission towers and flag poles in the immediate vicinity of an airport, intermediate landing field or civil airway.

Three methods of painting are recommended: For the maximum desired visibility, towers less than 250 feet in height should be painted alternate bands of white and chrome yellow separated by black bands one half the width of the white and chrome yellow bands.

As an alternative, the towers could be painted with bands of chrome yellow and black. As an other alternative, the towers could be painted with bands of black and white or black and aluminum. From sunset to sunrise, the towers should be marked with red lights, making 30 to 120 flashes a minute. In order to afford adequate protection to aircraft, the expert recommended that lights of higher candle power be used on major obstructions in the vicinity of landing fields.

Additional fixed red lights using 50 watt lamps are suggested for radio towers, one being placed at two-thirds of the height and one at one-third of the height of the tower. These lights would be arranged so as to be visible from any angle of approach.

## LISTEN IN

SUNDAY MORNING  
12:00-1:00—KXL (320). Sleep Wreck.  
9:30-10:00—KGW (402). Comic strip reading.  
9:00-11:00—KXL. Morning musical program.  
11:00-12:00—KGW. Hinson Memorial Baptist church service.  
11:00-12:00—KWBS (260). Classical program.  
11:00-12:00—KOIN (319). Church service.



## DO YOUR EYES WORRY YOU?

You should never know you're wearing eye glasses. If your glasses make you nervous and irritable, see a good optometrist today. Our glasses "feel good to the eyes." That's because a man who knows lenses also knows and fits frames.

Pomeroy & Keene  
Jewelers and Optometrists—Salem, Oregon

## LISTENERS OFFER THEIR APPROVAL

Efforts to Clear Interference in Far West Meeting With Favor

WASHINGTON. (AP)—The first big step of the Federal Radio commission to bring better radio reception to the far west has been accorded general approval by broadcasters and listeners.

Station owners in the Pacific coast and mountain states, who have written the commission, commend the recent changes in 71 station assignments, recommended by Commissioner Harold Lafount.

The second step in the program to improve conditions in the remote sections of the west cannot be made until changes are put into effect in other sections of the country, Mr. Lafount declares. The changes effective March 1 were designed to improve the local broadcast situation only.

The large majority of the alterations are made in the coast states where most of the stations that provide programs for the entire fifth zone are located. Listeners in the mountain and desert areas are dependent on the coast stations and a very few local broadcasters for their radio entertainment. These sparsely settled

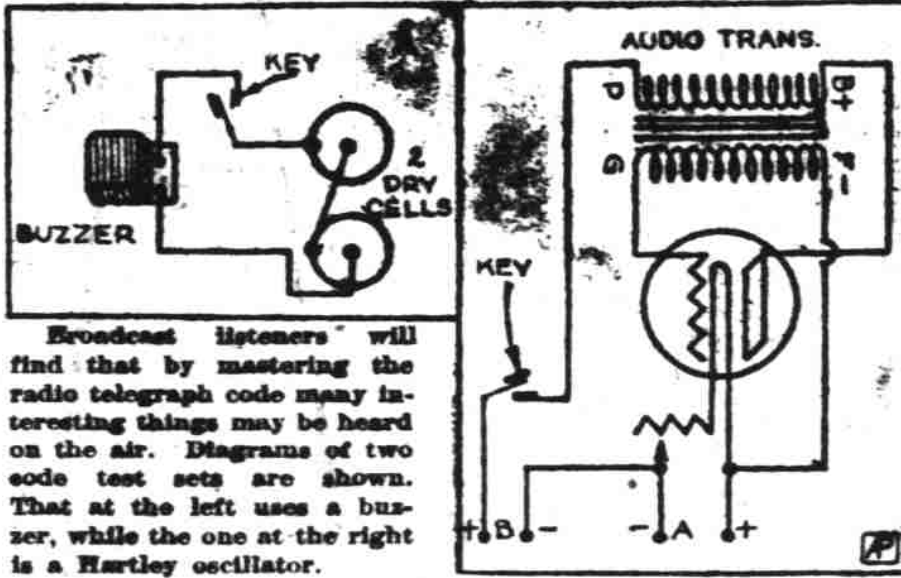
100.  
11:00-12:00—KXL. Services from First Methodist church.  
11:00-12:00—KTBR (229). First Presbyterian church service.  
11:45-12:00—KWJ (385). Organ concert.

## SUNDAY AFTERNOON

12:30-1:00—KOIN. Organ recital.  
12:30-1:00—KXL. Musical features.  
1:00-2:00—KOIN. Music.  
2:00-4:30—KOIN. Musical concert.  
2:00-5:00—KTBR. Symphony program.  
3:00-5:00—KGW. NBC program.  
4:00-6:00—KX (218). Studio program.  
5:00-5:30—KXL. Organ concert.  
5:30-5:50—KTBR. Salon orchestra.  
5:30-6:00—KGW. Concert.  
5:30-6:00—KXL. Courtesy program.  
5:00-6:30—KGW. U. of O. Glee club.  
6:00-7:00—KOIN (319). Organ concert.  
6:00-7:00—KX (218). Dinner concert.  
6:00-7:30—KX. Religious lecture.  
7:00-8:00—KOIN. Concert orchestra.  
7:30-8:00—KGW. Pianist.  
7:30-8:45—KTBR (229). First Presbyterian church service.  
7:30-8:00—KX. Studio features.  
7:30-8:00—KOIN. First Church of Christ, services.  
8:00-9:00—KGW. Concert.  
9:00-10:00—KOIN. Concert orchestra.  
9:00-10:00—KGW. Studio program.  
10:00-11:00—KGW. Symphony orchestra.

NBC—12, orchestra and soloists; 8-4:30, concert; 4:30-5, Great Moments of History; 5:30-7:30, Symphony orchestra.  
KPO—San Francisco (423). 6:30, NBC; 7:30, organ recital; 8:30-10, orchestra.  
KXZ—Hollywood (327). 6:30, church service; 8, orchestra and organ; 9, violinist.  
KOMO—Seattle (309). 6:30, NBC; 7:30, musical; 8, church service; 9, varied.  
KPON—Long Beach (242). 8, orchestra; 7, mandolin orchestra; 7:45, church service; 9:1, frolic.  
KPOA—Seattle (447). 6:30, NBC symphony hour.  
KPO—Oakland (284). 6:30, NBC; 7:35, church service; 9, musical program.  
KFL—Los Angeles (468). 6, 6:30, NBC; 7:30, music; 8, Aeolian organ; 9, 9:30, pianist; 10, orchestra.  
KJL—Los Angeles (320). 6, 6:15, music; 6:45, news; 7, church service; 8, vocalists; 9, orchestra.

## Code Knowledge Opens the World



Broadcast listeners will find that by mastering the radio telegraph code many interesting things may be heard on the air. Diagrams of two code test sets are shown. That at the left uses a buzzer, while the one at the right is a Hartley oscillator.

By C. E. Butterfield  
(Associated Press Radio Editor)  
NEW YORK. (AP)—An interesting world of dots and dashes awaits the radio fan familiar with the code used in radio telegraphy. Particularly is this the case under 200 meters, where will be found thousands of amateurs "talking" to each other and others services using short waves. To learn what is taking place a certain amount of study and patience is necessary.

Radio telegraph transmission is by Continental or International Morse code, which is somewhat simpler than the Morse code used in wire telegraphy. It consists of groups of dots and dashes so arranged that each represents a letter of the alphabet or a number.

The characters are shown in the accompanying box. An easy path to knowledge of the code may be taken by listening to the INTERNATIONAL CODE

A —  
B —  
C —  
D —  
E —  
F —  
G —  
H —  
I —  
J —  
K —  
L —  
M —  
N —  
O —  
P —  
Q —  
R —  
S —  
T —  
U —  
V —  
W —  
X —  
Y —  
Z —  
1 —  
2 —  
3 —  
4 —  
5 —  
6 —  
7 —  
8 —  
9 —  
0 —

The new setup was the first major undertaking of Commissioner Lafount since taking office a few months ago and the first important change in the far west allocations since his predecessor, Colonel John F. Dill was stricken with a fatal illness last summer. Most of the changes were time divisions between neighboring stations.

One Miami County farmer is saving up a load of tin cans, bottles, picnic plates, paper sacks, etc., which he will take to Kansas City and scatter over the boulevard, thus returning property to the rightful owners.—Miami Kansas Republican.

Now an American scientist has invented a mechanical man and we suppose that if properly wound up he will work all week and bring home the pay envelope Saturday evening before he runs down.

Read the Classified Ads

## Zenith-Crosley

### RADIO HEADQUARTERS

Sets—Radio Specialists—Parts

CHAS. K. DENISON

Phone 1161  
Res. 2029-J

175 S. High Street  
Salem, Oregon

## Schaefer's Herbal Cough Syrup

One of the Finest Cough Syrups made

Gives Immediate Relief From Coughing and Throat Irritation

Sold only at

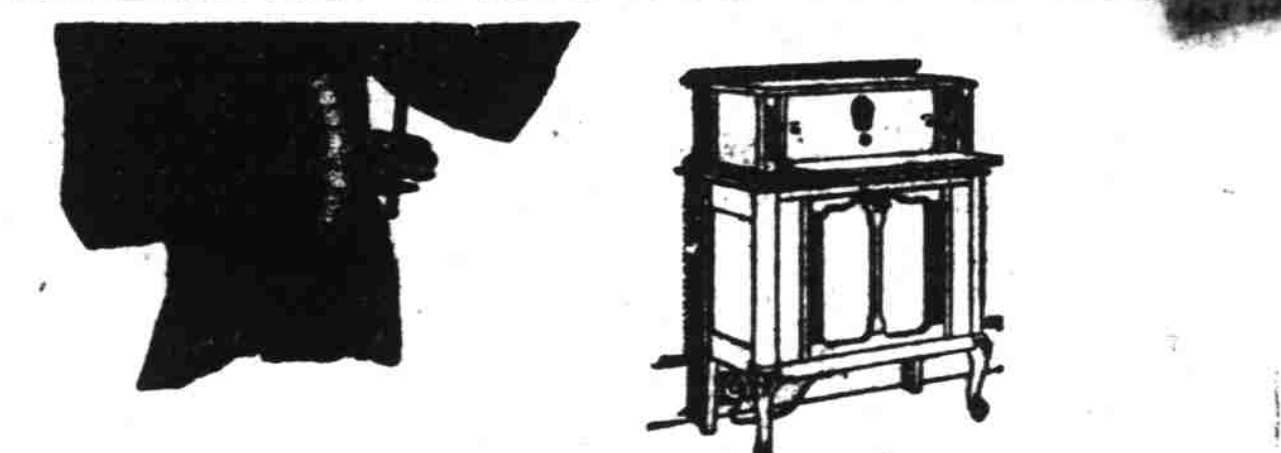
## Schaefer's DRUG STORE

135 North Commercial St.

Phone 197

Penslar Agency  
Original Yellow Front

## SPARTON USES NO BATTERIES

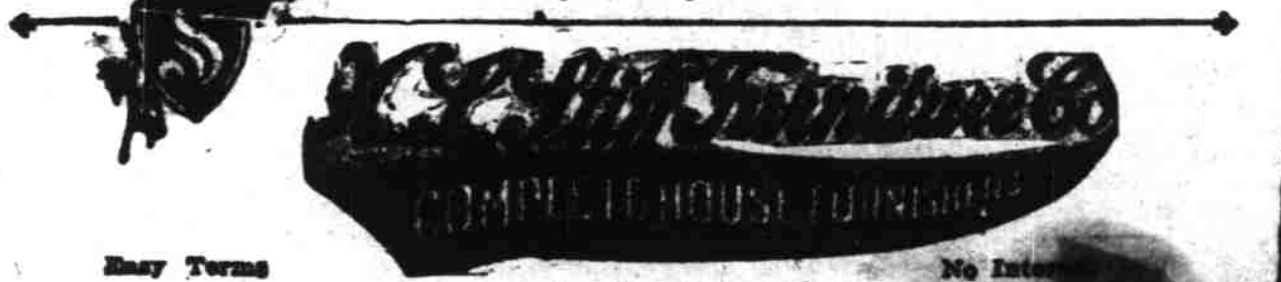


SMOOTH as velvet; rich as a rare old violin. Sparton users never cease to marvel at the true, clear quality of Sparton reception—the unalloyed purity of its tone.

Visit us. Hear the marvelous Sparton Electric—No Batteries

## SPARTON RADIO

"The Pathfinder of the Air"



Easy Tuning

No Interf.