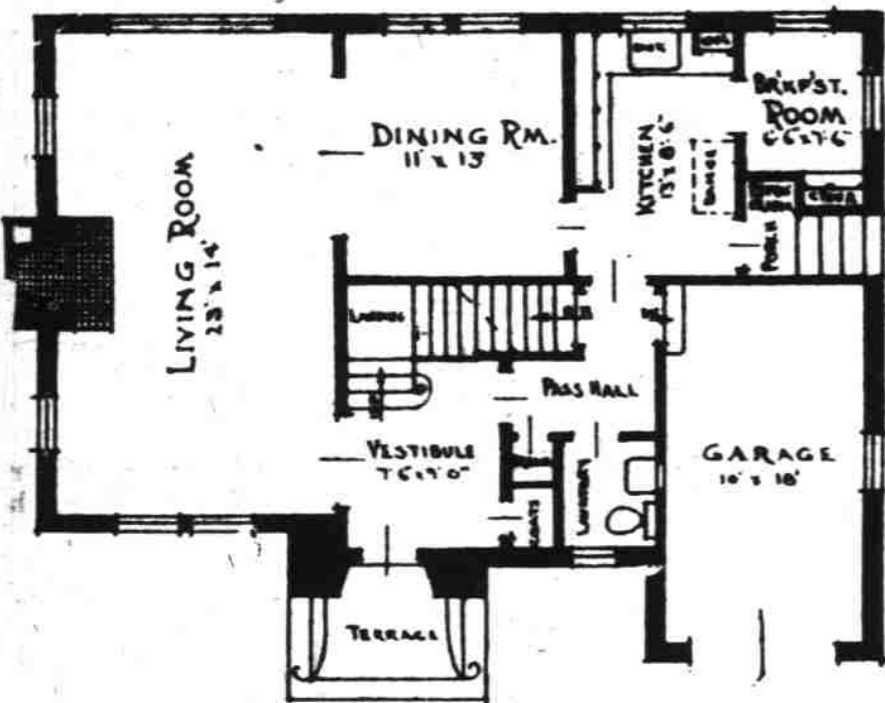
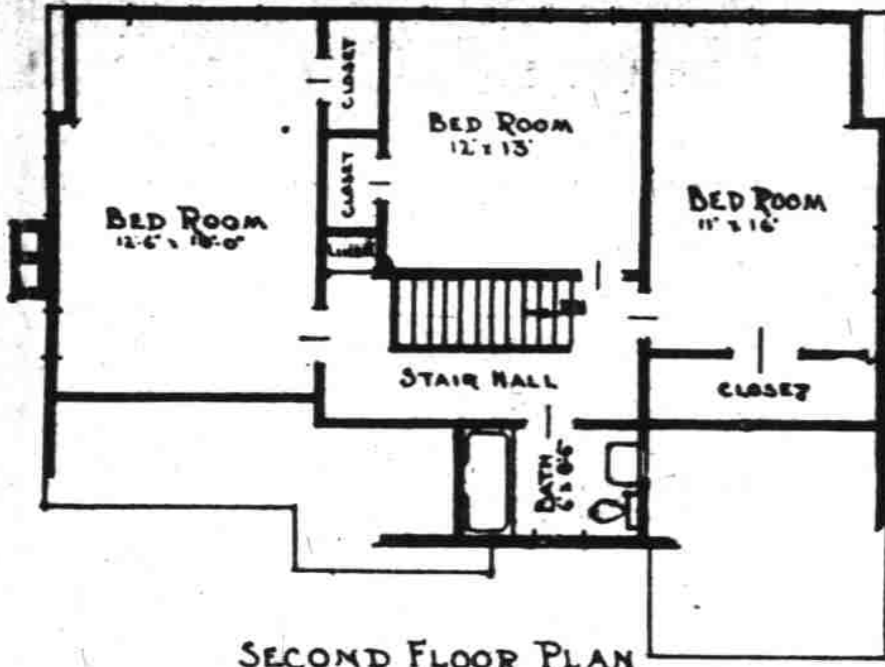
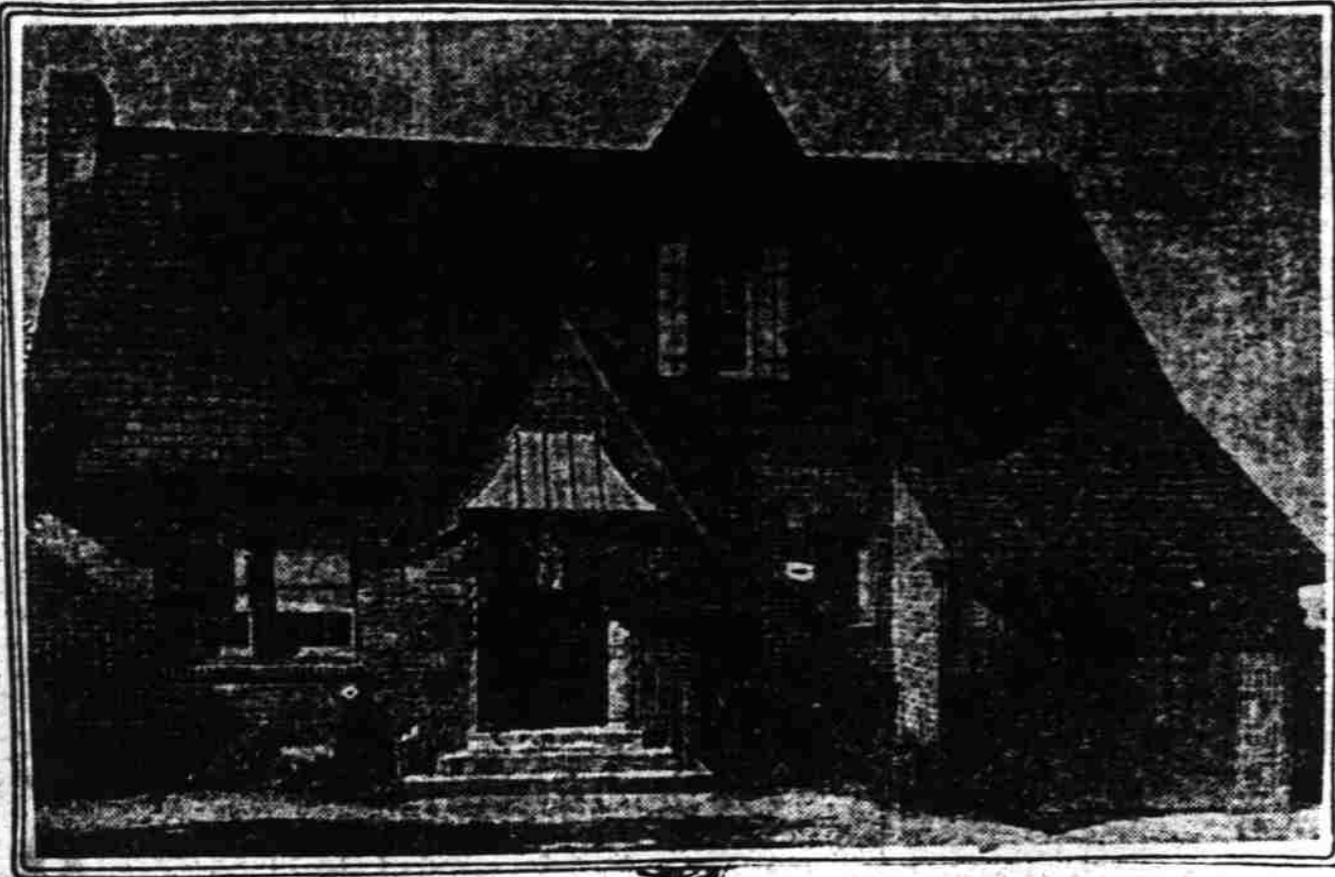


ATTRACTIVE AND COMMODIOUS HOME OF BRICK



W. J. Howard and other fixtures, even the most inexperienced in building will immediately recognize the fact that the outside walls of a well built house cannot possibly exceed fifteen or twenty per cent of the total cost. It is a fact that walls of the average small house of from five to seven rooms use but from eighteen to twenty-five thousand brick and that the masonry contract for the walls completed on such homes seldom exceeds \$900 to \$1200 and often less, including all labor and materials. In the brick house this figure will include the chimneys and fireplaces which are usually a part of the walls. It is readily seen through this analysis that a large cost difference is impossible.

That the brick house is an excellent type of house has long been conceded and so it is not strange, therefore, that since they have now come within the reach of all, that there has been an enormous increase in the use of brick for this purpose. Many persons have always desired brick homes, now they can have them, if they can afford a home at all, and they are getting them. Substantial homes are always the best investment because they are money savers over periods of time. Brick homes have few competitors in economy of upkeep. It is well said of them that they depreciate little because good brick are not effected when exposed to the elements. In fact, ageing only mellow a brick wall. Brick walls on roofing, plumbing, heating, interior finish, millwork, hardware from disagreeable cracking be-

Silks Exterior and Interior Paints

House Paints, Barn Paints and Stains

Manufactured in Salem

Guaranteed white lead and linseed oil base, manufactured by experts with more than fifteen years' experience with the largest paint manufacturers. Cut your paint cost. Buy a home product direct from the factory. Save \$1.50 per gallon. Phone us for free estimate on painting and suggestions.

White Lead Oil and Turpentine Varnish for Less

Factory 2649 Portland Road Phone 2786

cause the material does not warp or shrink.

The beauty of brickwork has its appeal to most all home lovers. It is safe to say that no other structural material has such an innumerable variety of exterior appearances as brick. No two brick walls need ever look alike. Brick is made in several different colors and each in many shades. The unit is small and the hand of the clever designer may lay them in many ways. Brick alone has truly distinctive beauty and it is a beauty of a permanent nature because its colors are natural and cannot fade or run.

Builders and architects, feeling the pulse of the popular demand, are creating new things in brick design and adapting old ones to modern usage and they are getting very attractive results. The demand for brick homes in the northwest is growing in a remarkable fashion. A rough check shows that more brick homes were built in the northwest last year than in the previous five years. Many well known northwest home builders are placing substantial and well designed brick homes on the market daily.

When one desires to use brick for building a home, no misgivings are necessary concerning the use of local products because these brick will be made locally with local labor and capital.

NEW HOMES BUILT IN SALEM HEIGHTS

One Community Gains In Population Over 1500 In Ten Years

New homes built in the vicinity of the Leslie Methodist church and Salem Heights in the last ten years have numbered 345 according to a survey made by the men of the church and announced at a program last Sunday in which lantern slides were used.

This construction made possible a population gain of 1500. There is additional possibility for growth in the district as far south as Hoyt street, of 100 more homes.

New additions planned south of Hoyt street but within a mile and one-half of Leclie church, have an area of 200 acres, which would add 800 more homes when fully built up.

The school enrollment in this territory has increased in ten years by 300, or 75 per cent. In the Salem heights territory it has increased by 87, or 181 per cent. The entire area tributary to Leslie church has thus increased in school enrollment 387, or 88 per cent.

During this period the membership in Leslie church has increased 231, or 108 per cent, but the Sunday school has gained only 17 per cent, the figures showed.

"ANYWAY, MY WIFE CAN'T JAW ME FOR COMING HOME LATE"

AN OPTIMIST IS A SILVER-PLATER WHO GOES AROUND DOLLING UP THE INSIDE OF CLOUDS.

There's no silver lining to your plumbing troubles if the out-of-sight work was slighted. Good Plumbing is worth what it costs. Any other kind isn't worth home-room!

"When you need a plumber, you need a good one!"

H. EGNER
1615 Center Street
Phones 292 and 1810-W
Fine Fixtures
Standard Equipment

MARKET CONTINUES AND DEMAND STEADY

New Business For First Part of 1928 Heavier By Wide Margin

The market during the past two weeks has continued to strengthen under an exceptionally heavy demand.

All barometers of current lumber business reflect a volume of orders far in excess of that a year ago. As a matter of fact, the latest West Coast Association report shows that business is heavier than it has been at any time since the middle of July last year.

New business for the first seven weeks of 1928 is heavier by a wide margin than for either of the three preceding years. Shipments and production are likewise heavier.

Practically the same condition is reflected in the southern pine orders so far this year are 3.2 per cent above the three-year average production. The production is 4.11 per cent below the three-year average. This is significant and seems to bear out statement made by Chas. F. Keith and others that southern pine production will show a very large decrease, which should help the Douglas fir situation.

The National Lumber Manufacturers' barometer indicates orders far in excess of those of last year. Reports from Kansas City indicate that heavy buying is making severe inroads in yellow pine stocks and that recent price advances have been well maintained and that surplus stocks that were freely offered several weeks ago have now practically disappeared.

Here in the Northwest Douglas fir prices are in many cases higher. It is true that there is a considerable range in values and some of the more important shippers feel that some mills are not obtaining what they should and could obtain for their lumber in view of the present active demand.

In calling attention to the very active demand for lumber at this time the West Coast Lumberman fully appreciates the fact that some wholesalers are very well supplied with orders, while others seem not to be sharing in this burst of business which is now coming this way. Just why this should be we can not say except it may be due to gradually changing conditions and to the fact that these firms are not keeping abreast with the times developing business for their organizations. Methods which were successful five or ten years ago frequently no longer produce results. This is not peculiar with the lumber business, but is a fact well known in all industries.

One of the unfortunate features of the present market is the fact that the general run of uppers do not display the strength shown by common. Some flooring and ceiling items move slowly. The big drop in price during the past two years was largely in the upper grades. This, of course, has hit the mills hard because it is in such items that losses in common must be made up.

Production seems to be normal for this time of the year. Notwithstanding that logging is now in full swing, the log supply is not increasing.

The shingle market continues to be strong with an upward tendency. The fir door market is stronger and higher.

There has been practically no change in the Atlantic coast or foreign markets. Business can be said to be normal in practically every division.

There is still a good deal of railroad buying and firms catering to this class of business de-

VARIOUS PROJECTS INCREASE DEMAND

Field Men Make Survey of Market For Douglas Fir and Plywood

LONGVIEW, Wn., March 12.—Various projects designed to increase the demand for West Coast woods are now being developed in different parts of the country by representatives of the West Coast Lumber bureau, according to C. J. Hogue, manager of the field department of the Bureau.

Four fieldmen are attending conventions of regional associations of retail lumber dealers, acquainting them with the properties and best uses of Douglas fir, West Coast hemlock, Western red cedar and Sitka spruce, and telling them of what the bureau is doing to increase the sale of these woods through retail dealers.

Two bureau fieldmen are making a survey of the market for Western red cedar and Douglas fir plywood in the eastern industrial field. Other projects being developed by bureau fieldmen include work on the eastern building codes in connection with gaining acceptance of the proper rating of various grades of Douglas fir, contact with millwork firms on the Pacific coast and in the middle west, promotion of the cooperative construction of homes from the first prize design in the West Coast Woods Architectural competition, and work with east coast engineers in the interest of the structural grades of Douglas fir.

Two fieldmen working in the northwest will go east soon to join the bureau representatives now attending retail dealer conventions in conducting a series of spring meetings for lumber salesmen, retail lumber dealers, contractors, carpenters and painters.

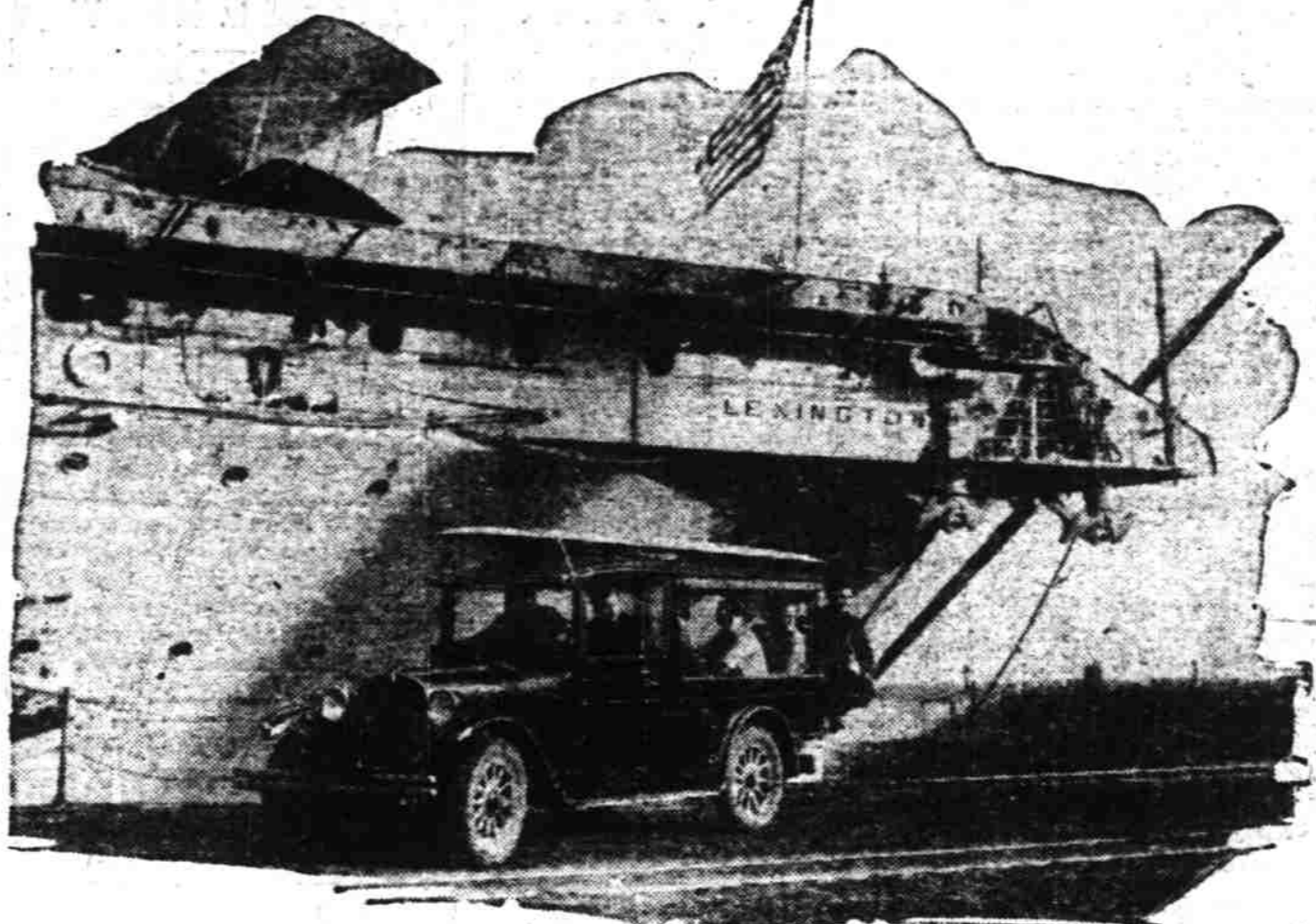
EVERYTHING TO BUILD WITH AT-

"If every other good thing be put into a building except Common Sense, then an irreparable mistake has been made."

—says Practy Cal.

LUMBER

Airplane Carrier Lexington Uses Graham Brothers Truck As Tender



Equipped for Water, Land and Air. THIS Detroit built truck is part of the regular equipment of the huge United States Navy's ship and is used for carrying officers, or marines to and from fields of action. The wing of a plane strapped on the truck roof is ready to be rushed to an emergency job.

BRICK WALKS AND WALLS GREAT HELP

Ideas Will Blossom Forth in New Plantings and Decorations

Now that spring has indicated an intention of staying with us, the some-owning gardener will be out with spade and hoe turning up

MIKADO

Have Your Scribblings Analyzed

The YELLOW PENCIL WITH THE RED BAND

Louise Rice, world famous graphologist, can positively read your talents, virtues and faults in the drawings, words and what notes that you scribble when "lost in thought".

Send your "scribblings" or signature for analysis. Enclose the picture of the Mikado head, cut from a box of Mikado pencils, and ten cents. Address Louise Rice, care of EAGLE PENCIL CO., NEW YORK CITY

the soil and enjoying the fragrance thereof.

Ideas for improving the landscaping by a touch here and there that have been formulating in the home-owner's mind during the winter will materialize and blossom forth in new planting and garden walls and walks.

"Brick is an exceptionally versatile and economical material to use in the 'retouching' process," points out the Pacific Northwest Brick & Tile association. "The rich warm colors of brick masonry in garden walls produce very pleasing and harmonious effects when used in combination with the foliage of growing plants and base makes a beautiful garden walk that anyone who enjoys spending spare hours around the home grounds can build and can afford. A winding walk in the back yard leading to such a brick terrace under a neatly constructed family clothes line makes this necessary feature of the backyard a feature of less ugliness. It likewise serves a utilitarian purpose on-dry or muddy mornings when the family wash or clothes are to be aired.

Elba and St. Helena are the names of the two islands on which Napoleon was imprisoned, an answered question points out in this week's issue of Liberty Magazine.

Cristobal and Colon are the two cities at the Atlantic end of the Panama Canal, an answered question points out in Liberty Magazine.



"I Just Love a Brick Home"

HERE'S the answer to the oft perplexing question, "What kind of home shall we build?" With brick construction, you will have a home that will endure for generations—one of which you and your children's children can alike be proud.

Long-Run Economy

And unless you have already made a study of costs, you probably will be amazed at the real economy of building with brick. Even the first cost of brick construction is reasonable as compared with other building costs, while its saving in long-run cost is remarkable.

Mellowed by Time

Walls of brick need no paint, cannot decay, are fire safe and practically indestructible. They are warm in winter, cool in summer. Twenty, forty or one hundred years hence they will still be the same—their beauty only mellowed by time and with no expense for upkeep.

Ask your local brick manufacturer for information about costs, or this association will help you make estimates and consider plans.

"The Heart of the Home," a book containing many attractive fireplace suggestions, will be mailed to you for 25 cents, to cover actual costs.

PACIFIC NORTHWEST BRICK AND TILE ASSOCIATION

DRY BASEMENTS DESIRE OF MAN

Essential Feature of Comfortable Home May Be Easily Attained

"A warm, dry basement is one of the most essential features of a home. Too often do we neglect this part of our home building and lend our efforts to the less important features. A damp basement produces unhealthy living conditions and causes much sickness that might well have been prevented had more precautions been taken when the basement walls of the home were built. In a climate such as we have in the Pacific Northwest, some provision should be made to keep moisture from the basement walls, builders declare.

"An economical and effective means of carrying off this water is to lay a row of drain tile around the outside of the basement wall between the basement floor level and bottom of the wall footing. Care should be exercised to place the tile at its highest point, at least two or three inches below the level of the basement floor surface. The tiles are not close pipes but merely serve to hold water course open, and if it is below the basement floor water will run out of the joints and soak through into the basement.

"These tiles, made of burned clay, are not affected by soil acid or alkalis and will last indefinitely without deterioration.

"The tile should be laid with an even slope of at least one-fourth inch to the foot and connected with the cellar floor or surface water drainage system. They should be covered over with gravel or broken stones, placed carefully on the tile and finer graded toward the top. When the foundation walls are built in a saturated soil, it is also advisable to cover the exterior face with a coat of some standard grade of water proofing.

"By capillary action, water sometimes rises vertically through basement wall roofing as oil rises in a wick and consequently the lower part of basement walls may be damp. To avoid this a strip of heavy composition roofing, or even better, two courses of slate laid to break joints, should be laid in the wall just below the basement floor level and at the outside-ground level of the house. This is a precaution taken by some builders, it is pointed out.

"If the suggestions are observed the result should be a warm and absolutely dry basement, according to a book published by the brick and tile manufacturers."

Between the years 1690 and 1720 there were more than 2,600 pirates afloat off our coast between Maine and Florida, according to Robert W. Chambers in an article in Liberty Magazine.