

NO WORRY ABOUT DAMP PAVEMENTS

Westinghouse Brakes Keep Chandler's from Skidding To Great Extent

"With the number of motor cars increasing on the highways, the problem presented to automotive engineers has been to increase the safety of these automobiles," states Mr. MacDonald, local Chandler distributor.

"As a consequence, the importance of good brakes continues to be of utmost concern. At first two wheel brakes seemed sufficient, then came the demand for four-wheel brakes, until practically every car now uses them. Four-wheel brakes have been accepted by the motoring public, but engineers have found that still they can be improved upon.

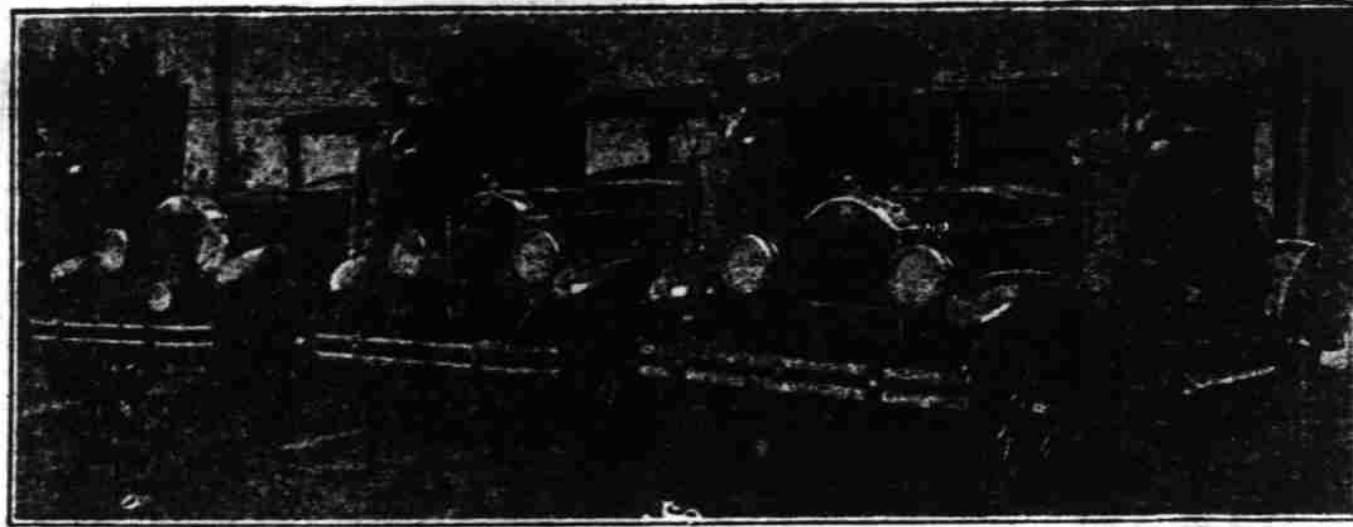
"So now Chandler is proving the claims of its engineers by using Westinghouse vacuum four-wheel brakes as standard equipment on every model it builds. Public officials, safety councils and many other organizations who are fundamentally interested in safety assert the fact that these brakes are one of the greatest safety factors introduced within recent years on a motor car.

"Tests recently made at the Chandler factory and by many who have put Westinghouse brakes to trial, have proven that these new brakes will not skid when applied on the wettest pavement. This point was proven by Chandler, at this time because, driving from now on will be largely over wet streets, up until the warm days of summer, consequently most every motorist is interested in how Westinghouse brakes react to such driving conditions.

"Most everyone who has had an opportunity to try this new brake development are surprised to see that with the slightest touch of the toe the car can be stopped quicker and smoother than the average car equipped with ordinary brakes. Because of the great safety attributes of these brakes and because of the fact that they reduce physical effort, it is easier for any Chandler owner to drive safely.

"So interested have traffic officials become in this brake innovation that they have visited Chandler's salesrooms in all sections of the country, reports show, and have given their unqualified endorsement. Chandler officials are indeed proud of the fact that they have introduced a device with their motor cars that will aid nationally, the safe and sane driving movement," concludes Mr. MacDonald.

First Radio-ized Police Fleet



To Berkeley, Cal., goes the distinction of operating the first police fleet which is completely radio-equipped. In line with his policy of providing every scientific aid for his men, Police Chief August Vollmer, well-known criminologist, sponsored installation of fixed-tuned short wave sets under the rear decks of these

Buicks, thereby combining quick communication and speedy pursuit in a manner which greatly increases the odds against crime. In support of Chief Vollmer's methods, it is pointed out that Berkeley requires the smallest police force in the country, population considered.

FLINT, MICH., March 17.—Police Chief August Vollmer of Berkeley, Cal., has just completed installation of radio sets in all the Buicks comprising the city's police department fleet, according to word from the Howard Automobile Company, Pacific Coast distributors of Buick cars. The combination of radio communication and fast pursuit machines, in Mr. Vollmer's opinion, is one which will vastly increase the odds against crime.

Chief Vollmer is widely known for his work in criminology. He is frequently called into consultation on police subjects in other cities, and asked to prescribe for conditions confronting authorities there. His policy of providing his

own men with the most up-to-date equipment at the disposal of science has attracted much attention to him, over a period of several years.

Among the residents of Berkeley, this policy is credited to a very large extent with making it possible for that city to maintain law and order with the smallest police force, per capita of population, in the country.

Past indications of Mr. Vollmer's convictions on the subject of crime prevention included equipping his men with Buicks so that they might be prepared for any emergency requiring fast and

reliable pursuit cars. His most recent step, installation of radios in all these cars, was aimed at providing instantaneous communication with the men manning the cars, no matter in what part of the city they might be.

Within a few seconds after an alarm is received at headquarters, lights flash in the drivers compartment of each car, notifying its crew that a message for them is on the air. By means of the fixed-tuned short wave sets located in the rear deck, it is then possible to receive the message and mobilize for action with a minimum of lost time.

"Russ" Smith Says:

"Give the World the Best you have and the Best will come to you."

NO BETTER TIRE THAN



We Just Love to Change Tires

Call 313 for our Service Car

RUSS SMITH'S
MILLER TIRE SERVICE

Miller Tires also for sale in Salem by Harbison's four stations, Bert's Service Station, Vaughan's Service Station

Read the Classified Ads

VICK BROTHERS USED CARS

1927 Chevrolet Coach

Equipped with bumpers, 85% new rubber, finish like new, and in A-1 condition in every way.

\$525.00

1927 Pontiac Roadster

This car is like new, equipped with bumpers, 70% new tires, and carries our new car guarantee.

\$650.00

1926 Ford Coupe

New Duco finish, new balloon tires, special ignition, new vaporizer, large horn, automatic swipe, S. & M. spotlight.

\$325.00

Late 1926 or early 1927 Chevrolet Coupe

New rubber, new Duco finish, over-hauled completely. This is a fine car and is well worth

\$450.00

1924 Oakland Sport Touring

This car is fully equipped in A-1 condition and the nicest running car we have in our used car department

\$375.00

1923 Buick 4

Equipped with a large new pick-up body, new top and curtains, in fine mechanical condition and has been run but very little.

\$275.00

Vick Brothers

Phone 1841

"The House That Service Built"

High St Trade

BUSINESS FOUND VERY ENCOURAGING

Canada's Principal Foreign Trade Being Done With 29 Countries

OTTAWA, CANADA—Another indication of the encouraging condition of business in Canada at present is given in the Canadian trade report for the 12 months ended January 31, 1928. The total trade of the Dominion for this period was \$2,325,762,281, an increase of \$24,861,262 over the 12 months ended January 31, 1927. Of this total, exports amounted to \$1,237,943,566, and imports \$1,087,818,715, a balance in favor of exports of \$150,124,851.

The United States, as for a long time past, again holds the leading place in Canadian trade. In the 12 months under review Canada bought from the U. S. goods to the value of \$706,336,729, or about \$71 per head of population of the Dominion. The United States was Canada's best customer as an individual country, with total purchases at \$474,033,350; Great Britain was in second place with \$407,386,546. Canadian imports from the U. S. were valued at \$463,876,605, which is more than the total value of imports from the whole of the British Empire.

The importance of Canada as an agricultural country is emphasized in the trade report. Agricultural, vegetable and animal products are credited with \$711,548,459. In next place comes wood and paper valued at \$280,704,981. Among the principal items of imports agricultural, vegetable and animal products total \$297,515,594 in value, with iron and its products in second place, valued at \$249,145,395.

Canada's principal foreign trade is done with 29 countries.

AMBULANCE TRAVELS FAR IN 15 SEASONS

Well over a half million miles of service is the record of a Knight engine car that has been in continual service as an ambulance at the Toronto General Hospital for the past 15 years. Placed in service in 1913 this car has travelled a total of more than 665,000 miles in its errands of mercy over the streets of Toronto and nearby points.

Despite this long period of service which is said to be an outstanding mark in the motor car world, this ambulance, powered by a Knight sleeve-valve engine is still doing active duty. It is said that this ambulance, because of its long life and quiet, smooth and

economical operation was perfectly adapted to ambulance work. The Knight sleeve-valve engine employed in the Toronto hospital's ambulance is the same type of power plant used in the Falcon-Knight six and other Knight engine cars.

According to officials of the Falcon Motors Corporation of De-

troit, builders of the Falcon-Knight line of cars, each year has seen a more decided trend on the part of motor car buyers toward cars using a Knight sleeve-valve engine for a power plant. This is said to be caused by a realization of the advantage of this type of engine over motors of other designs.

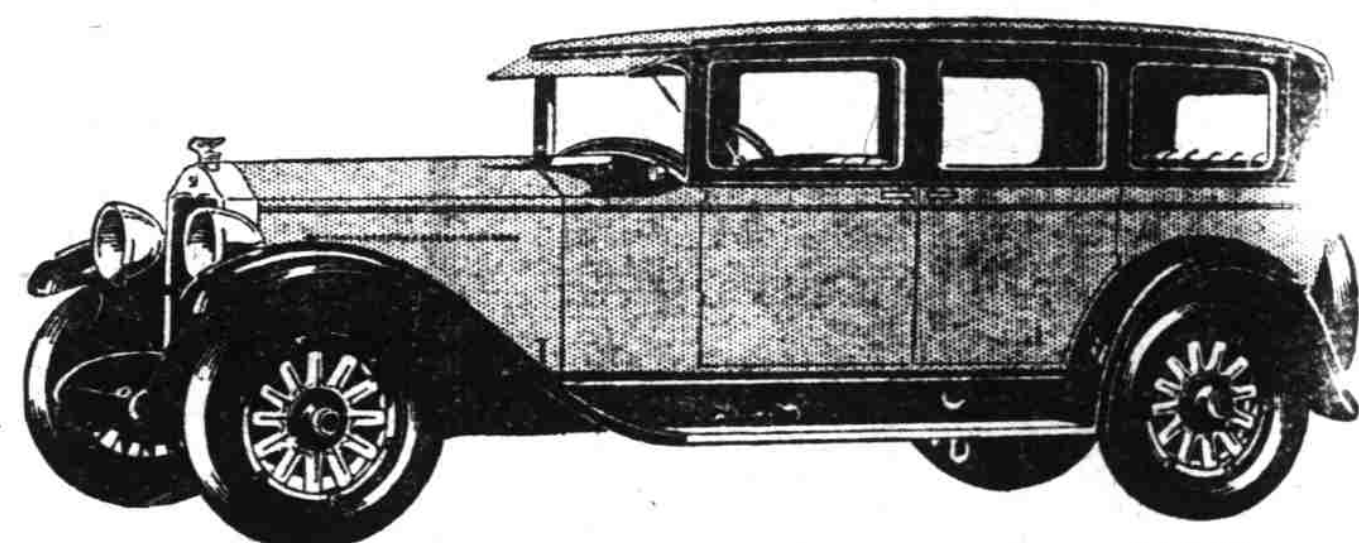
Since its initial introduction less than a year ago when the Falcon Knight Six was presented at the lowest price ever reached by a Knight engine six in America this car has won such a hearty reception that Falcon officials express the highest optimism over sales prospects during the present year.

BUICK

Outsells any other 3 cars in Buick's field

MOTORISTS like you invest almost as many dollars in Buick motor cars as in any other THREE CARS in Buick's field

Faith means something when it is backed by dollars



SEDANS \$1195 to \$1995 • COUPES \$1195 to \$1850 • SPORT MODELS \$1195 to \$1525
All prices f. o. b. Flint, Mich., government tax to be added. The G.M.A.C. finance plan, the most desirable, is available.

WHEN BETTER AUTOMOBILES ARE BUILT...BUICK WILL BUILD THEM
OTTO J. WILSON
388 North Commercial Telephone 220

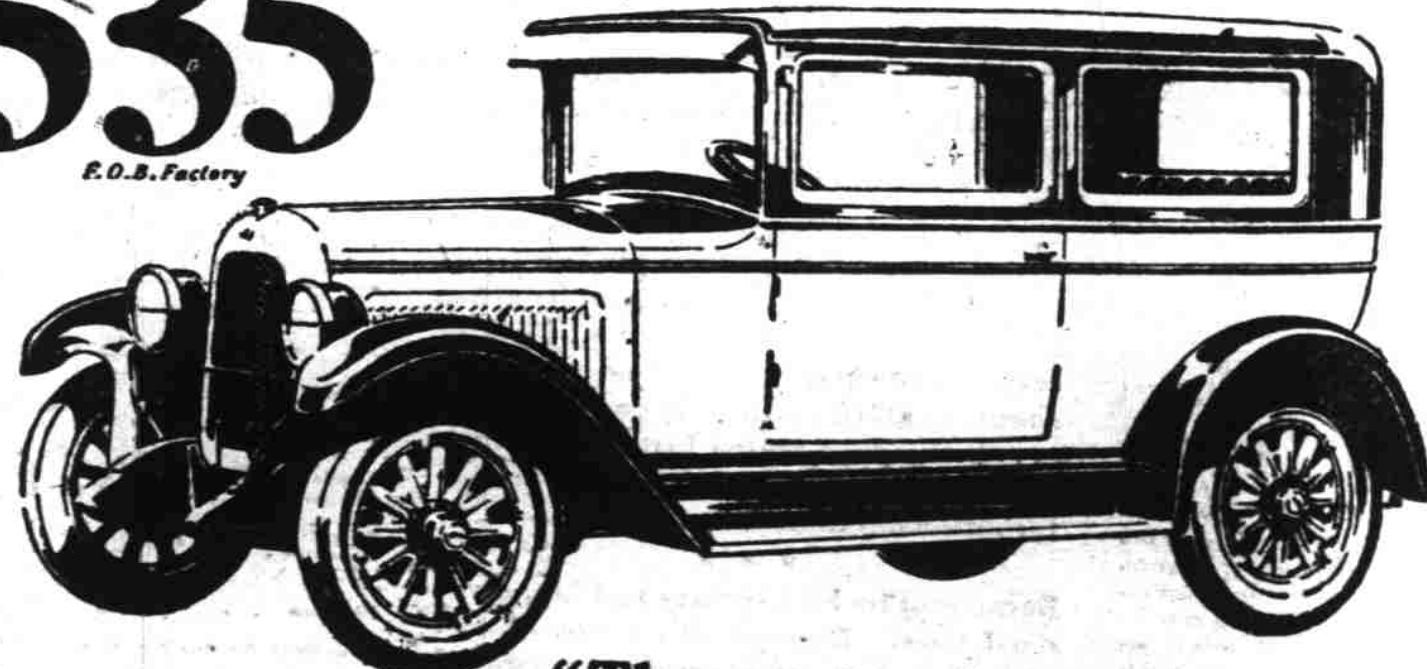
WHEN BETTER AUTOMOBILES ARE BUILT...BUICK WILL BUILD THEM

Reduced in Price - finer than ever!

The PERFECTED Whippet

Coach
\$535

E.O.B. Factory



"The most valuable car ever offered for so little money"

WHEN the first Whippet was produced it was far ahead of the field in modern engineering design. It has a drilled crankshaft for full force-feed lubrication and silent timing chain as used on the finest custom cars. It has the only light car power plant which actually doubles its rated horsepower.

The Whippet holds the A. A. A. Coast-to-Coast Economy Record with an average of 43.28 miles to a gallon of gasoline. No other car has ever given such a demonstration of economy. It holds, also, many speed, second gear, hill-climbing and other records.

We will gladly demonstrate this amazing car, to suit your own convenience, confident that you will find it the outstanding performer among light cars.

ORDER NOW FOR EARLY DELIVERY

Alfred-Billingsley Motor Company

333 Center Street

Telephone 1460

IMPERIAL '80'S' FOR JAPAN'S RULER

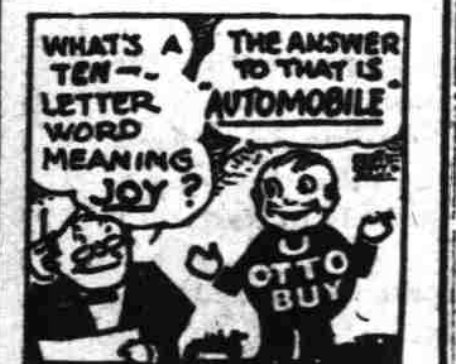
Japanese Government Buys Five Luxurious Chrysler Limousines

When Japan's new emperor proceeds from his Tokio palace next fall to ascend his "High August Seat" in Nippon's ancient flower capital, his procession will faithfully produce in all respects but one the time-established ceremonial observed by the long list of his forebears who have preceded him along the triumphal way to Kyoto. This one respect will be that the members of the imperial household and diplomatic corps will ride in automobiles.

Already, although the sacred rice which the emperor will offer to the spirit of his ancestors is barely planted, preparations for the brilliant coronation ceremonies



Fitzgerald-Sherwin Motor Co.
Corner Liberty & Chemeketa Telephone 1132



This year you must have a car. So easy to buy. Small price because we must sell. West of Fire Station. Don't Forget.

Fitzgerald-Sherwin Motor Co.
Corner Liberty & Chemeketa Telephone 1132
"The House of Courteous Service"