

You Are Invited to Come to the Salem District and Engage in Poultry Industry

LEE HATCHERY HITTING TOWARDS THE HALF MILLION MARK IN BABY CHICKS

Will Go Beyond 400,000 Mark During the Present Year—One of the Most Up to Date and Complete Hatching Plants and Breeding and Mating Farms in This Country—Specializing on the Best Strains of the Standard Breeds

Some businesses make a mushroom growth in a short period of time at the expense of quality, but not so with the Lloyd A. Lee Hatchery and Poultry Farm a mile and a half east of the Salem city limits on the Asylum road. Mr. Lee started in the poultry business here about six and a half years ago with a small, conservative plant, and now he has one of the largest individual hatcheries in the state of Oregon and has become famous among poultrymen of the state as a producer of strictly high grade baby chicks.

His modern poultry plant now consists of the original five acres which is now occupied by his hatchery and brooder houses, and



Lloyd A. Lee

a half mile farther east is his new 25-acre breeding farm which has a capacity of about 2500 hens. It is considered one of the best breeding farms for all kinds of poultry in the northwest. One who may have visited this modern hatchery and poultry breeding farm in the making a year ago, and would favor the place with a return visit now, would quickly see that the past season has been a most profitable and successful one for Mr. Lee. Nowhere in Oregon or Washington in any poultry district has there been such business-like expansion.

On the five acre tract Mr. Lee has made most of his improvements during the past year. He has moved his former home over on the northwest corner of the tract and remodeled it, making a cozy home for his expert hatcheryman, H. A. Armstrong. On the old residence site facing the highway, Mr. Lee has erected a modern eight room two story house of the Dutch colonial type with full basement, furnace, bath on both floors, fireplace and all modern built-ins and convenien-

ces. Two large brick columns topped with electric lights marks the entrance to the yard in front of the residence.

20,000 Chick Capacity

More improvements have been added to the tile incubator house which houses three mammoth forced air-draft Smith incubators with a combined capacity of 141,000 eggs. The main office of the establishment is also in one wing of this house. The sorting and packing rooms, which are all steam heated, occupy another wing of the house. More brooder houses have been added lately. The main brooder house is 20 by 120 feet and is equipped with a modern hot water system. Other houses are being added to give a capacity of about 20,000 chicks.

Up to Date

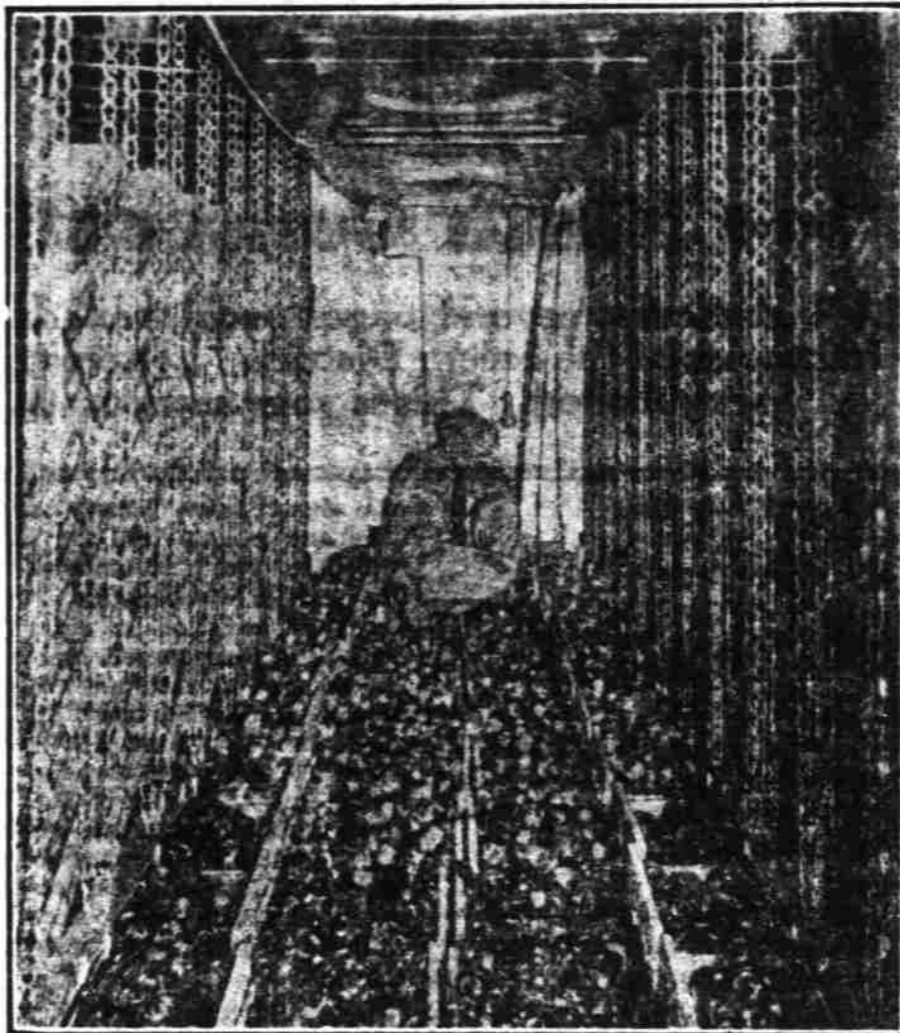
This great brooder house has concrete yards or runs on either side so that the chicks may run out in the open and get the benefit of the direct sunshine and still not come in contact with contaminated soil. Across the driveway from the incubator house is the warehouse and garage which is a two story building equipped with elevator and other conveniences. This building also houses a modern chemical fire engine.

Established on new rolling ground about half a mile east of the home place is the 25 acre breeding farm where great care has been taken in plating and laying out a modern poultry plant with its special mating, trapnesting and brooder houses made easy of access by graveled driveways. Clean soil, new buildings, stock from the best known breeders, expert care and management are assets that will make this one of the outstanding plants of the northwest. Some of the best stock in the country has been purchased and will be used here.

Modern Methods

There are four trapnested breeding houses in this new farm. Each house is 20 by 110 feet and is divided into five compartments of 20 by 20 each for 100 fowls and a 20 by 10 feeding room. The capacity is 500 fowls to each of these large breeding houses, which are also equipped with 150 foot runs on each side of the houses.

There is a row of six modern special mating houses with double yards which house special pens of Jersey Giants, Buff Orpingtons, R. I. Reds, Barred



Interior of one of the three mammoth 47,000 egg Smith incubators at hatching time. Note the egg racks on each side and hatchery compartments below. Lloyd A. Lee Hatchery and Poultry Breeding Farms.

Rocks, Black Minorcas, Dark and Light Brown Leghorns, and White Wyandottes of the best strains obtainable, bred for standard type and egg laying qualities. There is also a fine pumping plant and water system on this new farm, each of the four big breeding houses being equipped with automatic water fountains, trapnests and litter carriers. A cozy residence and large barn and garage complete the present improvements on this 25 acre breeding and exhibition farm.

Steady Growth

Mr. Lee established his poultry business in the Willamette valley in 1921 and has enjoyed a steady and rapid growth until now he has one of the largest and best equipped hatching plants in the state. The incubator capacity the first season was 6000. This was later increased to 12,000, then to 60,000, then 94,000, and now he has a capacity of 141,000 eggs. During this season less space is being used for custom hatching in order to care for the increased demand for baby chicks. Last year 225,000 baby chicks were hatched for sale and 150,000 more hatched for farmers of the valley. This year Mr. Lee will hatch 300,000 for selling and more than 100,000 custom hatch.

Started Right

Mr. Lee began his work with poultry in 1916 in one of the largest commercial plants at Petaluma, Cal., where hatching, brooding, and egg production were carried on under ideal conditions on a large scale. His personal contact while there with men like Walter Hogan, H. A. George and others gave him a background for his later work with J. A. Hanson of Corvallis, Ore., D. Tancred, Kent, Washington, and others throughout the northwest.

Mr. Lee is a member of the Oregon Poultrymen's association, the Pacific Cooperative Poultry Producers and the Oregon branch of the International Baby Chick association.

Among the breeds of poultry in which this plant specializes are White, Brown and Buff Leghorns, White and Black Minorcas, Barred and White Plymouth Rocks, Anconas, Light Brahmans, Jersey Black Giants, Rhode Island Reds, White Wyandottes, and Buff and White Orpingtons. Mr. Lee now has 10 persons in his employ and

BABY CHICKS AND HATCHING EGGS

Fourteen Varieties from parent stock OFFICIALLY TESTED AND OFFICIALLY APPROVED. Our prices are in accord with our high quality. Our free 24 page catalogue tells why.

CUSTOM HATCHING

Last season we custom hatched 150,000 baby chicks. We know how to get best results with our 47,000 egg Smith incubators. Let experts do your work.

LEE'S HATCHERY
Phone 133F2

is already laying plans for future expansion of his plant during the coming year.

OREGON VEGETABLE CROP INCREASES

Considerable progress has been made during the past seven or eight years in growing and marketing Oregon vegetables. This development can best be summarized by citing the fact that whereas in 1920 but 185 cars of vegetables were shipped from the state, worth less than \$100,000, a total of 2,946 cars rolled in 1926 worth approximately \$1,500,000. This increase has come about rather gradually, the figures showing a moderately slow ascending curve in which the peak total was reached in 1926. Added to the above mentioned volume of business is that of the cannery pack of vegetables which in eight years has increased from slightly in excess of 100,000 cases worth approximately \$300,000 to over 400,000 cases having the approximate value of \$1,200,000, the peak total being reached in 1926 with over 463,000 cases.

No figures are available showing the development of the business of local city marketing, which however, has shown a healthy increase due to the gradual growth of cities all over the state.

Six Leading Varieties

Best Stock Prices Reasonable

BABY CHIX

SALEM CHICKERIES
Phone 400 Salem, Ore.
264 N. Cottage Street

MORLEY'S

Boys' and Girls' Shop
Infants' and Children's
Ready-to-Wear
227 North High

THE BEST BROODER FUEL

is Gasco Briquets

Priced \$17.50

Per Ton FOB Our Bunkers

No Ashes—Clean Burning They're All Heat

HILLMAN FUEL COMPANY

Phone 1855
Yard Office 1405 Broadway

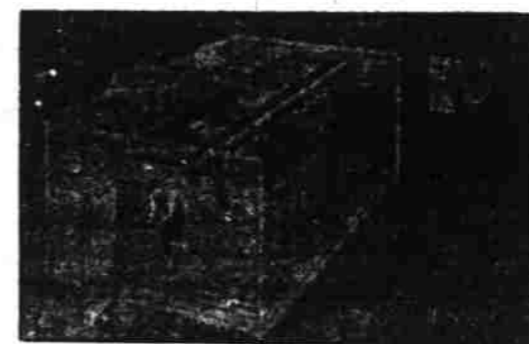
CAPITAL CITY BEDDING CO.

3030 Pacific Highway North

PHONE 19

Phone or Write—We Will Call

First Class Renovating



BABY CHICKS

FOR 1928

Officially Tested Officially Approved

Produced in Modern Smith Incubators of the Very Latest Design—A Guarantee of Vigorous, Sturdy Chicks

Fourteen Varieties

From B.W.D. tested stock in accord with interstate quarantine regulations. Send for 24 page, illustrated catalogue. Book orders at once—many dates already filled.

100% Live Delivery Guaranteed—Shipped Prepaid

Lloyd A. Lee

Hatchery and Poultry Breeding Farm

Route 6, Box 115-R

Salem, Oregon