

Farming and Industrial Magazine Section

The Oregon Statesman

WAY BETTER THAN LAST YEAR

WORLD RECORD PER ACRE POTATO YIELD LAST YEAR WAS MADE WITH OUR SUPERIOR OREGON SEED

THIS SEED WAS GROWN NEAR SALEM AND THE YIELD MADE IN DELTA LANDS NEAR SACRAMENTO

SEVENTY-SEVENTH YEAR

SALEM, OREGON, SUNDAY MORNING, FEBRUARY 19, 1928

PRICE FIVE CENTS

"CATERPILLAR" PRICES REDUCED

The Loggers & Contractors Machinery Company Makes Announcement of Importance to All Power Users

The announcement of radical price reductions, just released by the manufacturer of the "Caterpillar" Tractor through its local dealer, the Loggers & Contractors Machinery Co. of Portland, Salem, and Eugene, has been greeted with great enthusiasm by local power users, as well as by the tax-paying public in general.

The newly announced price reductions range from 8% to over 11% and represent a cut of \$400.00 in the price of the largest size of the "Caterpillar" Tractor to a reduction of \$175.00 in the price of the smallest model, the 2-Ton.

The announced reduction of prices in addition to those previously made represents another evidence that ambition to pass on to purchasers the advantages of increased sales, increased production and consequent economies in manufacturing and distribution.

Each year sees remarkable increases in the number of "Caterpillar" Tractors that go out into active service in the building and

(Continued on page 8.)

BUILDING UP THE SOIL OF THE GARDEN

Building up the soil and keeping it built up is the first task of a successful gardener. It is a task that can be started right now while the soil is frozen. Gardeners are now dependent to a great extent for stable manure upon the prepared material from the stockyards and great packing plants of the country which supply pulverized sheep manure and shredded cow manure which are retailed by seed houses.

They have the advantage of being dry and more agreeable to handle than the wet straw manure hauled directly from the stable and are more easily distributed over the garden. In being almost free of strawy material there is more fertilizing value and less waste than in the stable product and also a ton of the dry prepared manure goes much further than a ton of the wet material as it is usually delivered.

Shredded cow manure may be spread over the garden now to be spaded in when the ground is workable in the spring. It is an excellent idea to give the hardy

(Continued on page 8)

ICE CREAM OUTPUT IN THE UNITED STATES IS NOW AROUND A THIRD OF A BILLION GALLONS A YEAR AND THE VALUE HAS MOUNTED TO \$650,000,000 ANNUALLY

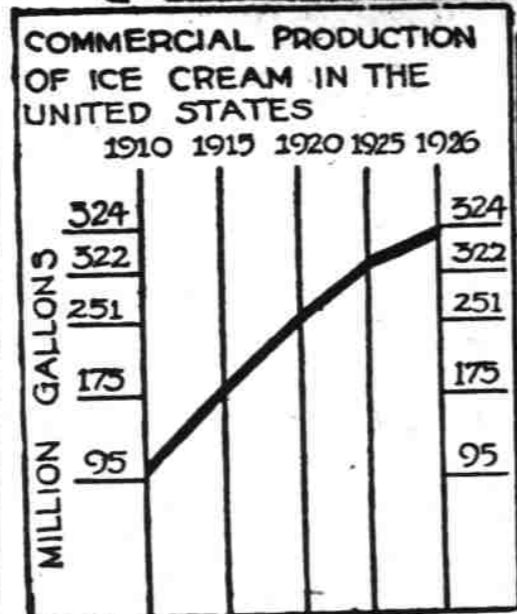
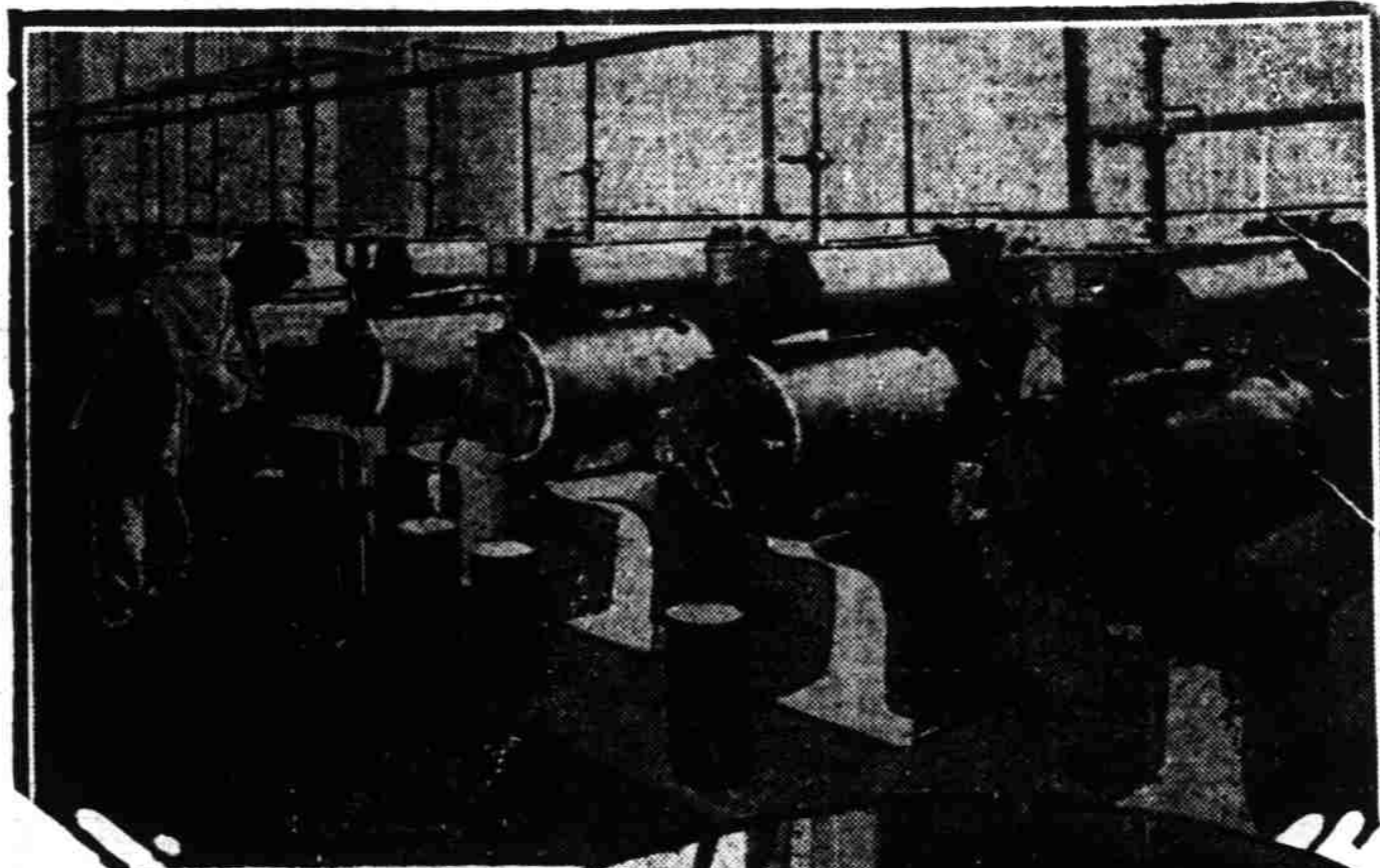
That Is the Value of the Output to the Wholesale Dealers, of Which There Are Now 5000 in the United States—Great Developments Since the Time, 77 Years Ago, When the First Ice Cream Was a "Delicacy Eaten in Fun"—Making of Ice Cream Has Been a Great Boon to the Dairymen of This Country.

By Frank I. Weller
(Associated Press Farm Editor)
WASHINGTON, Feb. 18.—(AP)—Three quarters of a century ago Jacob Fussell, a Baltimore milk merchant, started in fun an

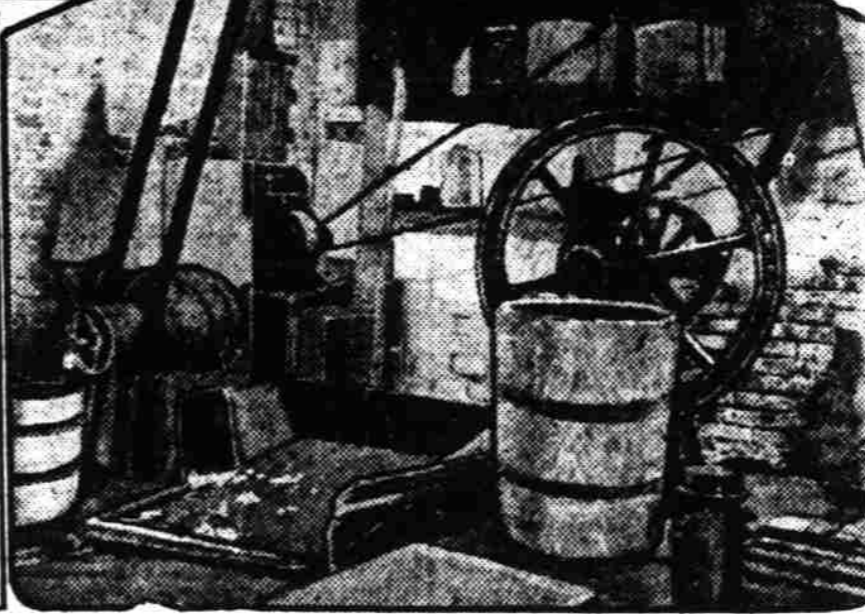
ing it. Immediately a multitude of possibilities arose, including the development of a popular delicacy when sugar and flavoring were added to the milk.

How well the theory succeeded

ington. The machinery was simple. A single "freezer," attached to a drive-wheel that provided power for rotation, was the entire equipment. When a factory was erected in 1862 in Bos-



Seventy-five years ago ice cream was a novelty with no status as a food. Today its production is an industry with a \$650,000,000 yearly output. The pictures show modern methods of production (above) as compared with the earliest ice cream factory (below). The chart indicates the industry's growth.



industry that has become a giant of American commerce—the present \$650,000,000 wholesale ice cream business.

Fussell's milk enterprise suffered reverses in the form of limited outlet in 1851, and to solve the problem of surplus storage he hit upon the idea of freez-

ing it. Immediately a multitude of possibilities arose, including the development of a popular delicacy when sugar and flavoring were added to the milk.

By 1856 demand for ice cream had so increased that a factory was put into operation in Wash-

ington, orders for ice cream had come to American manufacturers from England, India and Brazil. Western cities awoke to the possibilities and a factory was opened in St. Louis after an initial outlay of \$500 for rights to the carefully

(Continued on page 8.)

INVESTMENT NOT EXPENSE, DRAINAGE

Many Advantages of System for Any Land Needing Draining

Many dollars of sure profit are lost to the farmers of the Willamette valley each year through the lack of draining facilities. Their farms are flooded in the winter and remain in a soggy condition during the summer. This wet soil tends to reduce crops and does not allow the land to give its best to the raising of the crop. Nearly every farm in the country contains more or less low land which in the majority of the cases is non-productive, but which, by the investment of a small amount of money, could be made just as productive as the rest of the farm.

A thorough system of tile drainage will prevent any possible damage from heavy rains or floods. It will enable farmers to work lands immediately after rains and lengthens the seasons for labor and vegetation by warming the soil earlier in the spring and keeping off the effects of cold weather longer in the fall. It deepens the surface soil and prevents surface washing by drawing the water directly down through the soil to

(Continued on page 8.)

THE PROBLEMS OF THE CITY GARDENER

City gardeners are confronted with problems vastly different from dwellers in the wider spaces of the country, particularly the dwellers on farms and estates of several acres. The latter may select the choicest site on the property for a vegetable garden. The city lot or back yard garden offers no such elasticity of choice and no selection as to the quality of the soil.

Yet the many thousands of city gardens are playing a most important part in providing a substantial increase in the food supply of the nation but their possibilities are hardly touched for there are thousands of acres of unoccupied land in and around our cities that can be utilized for food production, thousands upon thousands of backyards that might well be utilized for the purpose and which are serving no other good use.

Transportation of freight is one of the great national problems. The city back yard or vacant lot garden provides home vegetables without the cost of transportation and handling and the cumulative effect would remove a large factor

(Continued on page 5.)

SALEM NEEDS AND CAN SECURE A POTATO STARCH FACTORY