

GRAHAM-PAIGE TELL OF NEWEST LINES

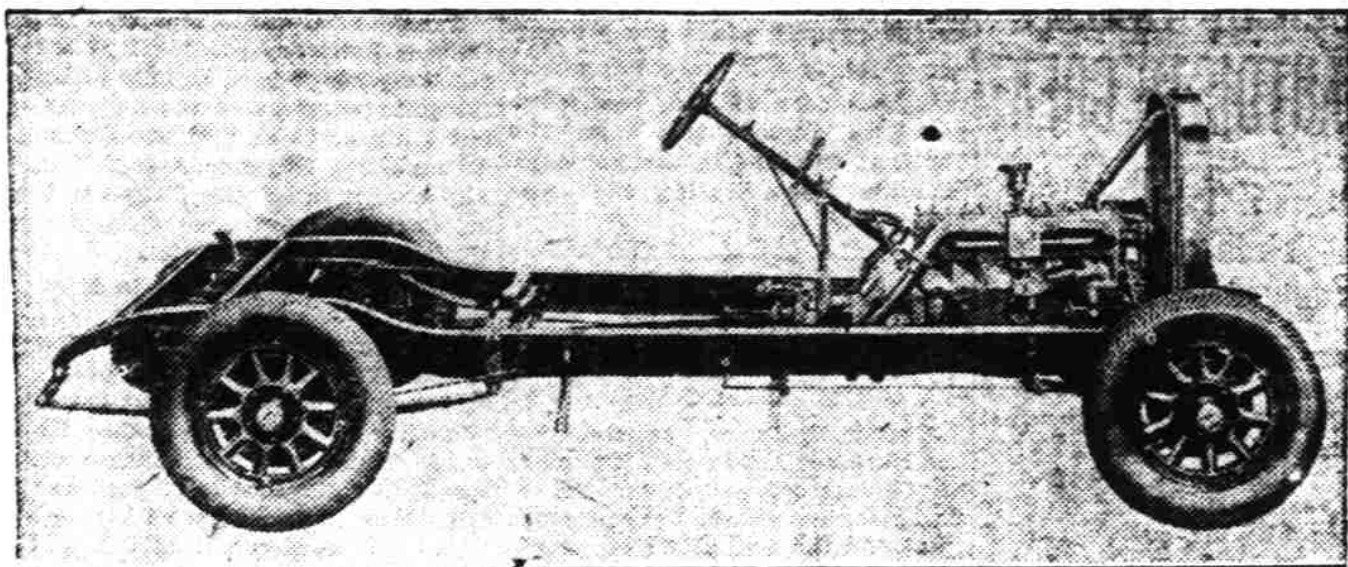
Paige - Detroit Company Comes Under Leadership of Graham Brothers

The Graham-Paige Motors corporation, Detroit, which introduced an entirely new line of passenger cars at the New York automobile show, has announced that the cars have been put into production and that shipments have already been made to most of the larger distributing points in the United States. In a comparatively short time, therefore, the new models will be on exhibition wherever the company is represented by a dealer.

The Graham-Paige was one of the centers of interest at the New York and Chicago national auto shows, and at all the other shows held so far in the larger cities, and was received everywhere with marked favor.

With the introduction of the new cars, it was announced that the Paige-Detroit company had become the Graham-Paige Motors corporation, under the leadership of the three Graham brothers, who acquired control of the plant last June. The Graham name is known throughout the automotive industry, here and abroad, because of the achievements of the three Graham brothers in the truck and passenger car industry, and the Graham-Paige car is the answer to the query that has been propounded many times since these three brothers purchased a long-established and successful manufacturing plant in the passenger car field. "What are the Grahams going to do?" was the question; the Graham-Paige car is their answer—the first passenger car to bear their name. It is now known that the new

Side View of the New Oldsmobile Six Chassis



cars existed in fact long before they acquired a factory in which to make them. From the time they severed their connection with the truck industry and gave up their interests in the passenger car field, the Grahams were working with a staff of engineers on a new automobile to meet their own ideas of what a motor car should be. Cars were built and tested and refined, and preparations for their production were begun as soon as the Paige plant was purchased.

The new Graham-Paige radiator emblem, though small in itself, is a significant illustration of the careful study given to the details of the new cars. Instead of an ordinary trade-mark, the Graham-Paige emblem is actually a work of art, as is attested by the fact that the studios of Lorado Taft, American sculptor whose monumental artistic works are known throughout the art world, were engaged to design the emblem.

A wide variety of models is included in the new line. Most of these are now in production. They have many exclusive features of Graham-Paige's own design. Four speed transmissions are used in all but the Model 610.

Auxiliary Auto Lights Decided Aid to Driver

Auxiliary automobile lights when properly installed and adjusted are a decided aid in night driving.

Most everyone realizes the convenience of a spotlight for reading road signs, house numbers, etc., but not everyone has learned the true value of the light in helping the driver to safely meet the many dangerous road conditions that are encountered when driving at night.

Correctly adjusted to the road, the driver can keep his eyes focused on the path of light and not be distracted by the lights of oncoming machines. Willis Clarke, local manager of the Western Auto Supply company declares that the proper way to use the spotlight is to direct its beam on the right hand edge of the road in front of the car. This not only prevents the rays from shining in the eyes of oncoming drivers but gives the driver of the spotlight equipped car a clear beam of light that plainly describes the edge of the road or any object at the side of the highway.

The oval-lite which is rapidly gaining favor among automobile owners has a duty of its own in

illuminating the curves as the car turns a corner and is not intended to take the place of a spotlight, declares the Western Auto manager.

Oil Company Gradually Extending Its Service

Union Oil company of California, whose service stations blanket the entire Pacific coast and extend eastward to Nevada and Arizona, is gradually extending its marketing sphere westward across the Pacific. Following closely on its entry into Australia and New Zealand as a marketer of its refined products, comes the announcement that arrangements have been completed for the distribution and sale of its Aristomotor oil in Java, most important island of the Dutch East Indies group. For the present, according to the announcement, the Union's activities in Java will be restricted to the sale of its motor lubricant.

Java lies northwest of Australia and is long and narrow, its greatest length from west-northwest to east-southeast, being 686 miles, and its breadth from 48 to 121 miles. Its area is approximately 48,500 square miles.

LOW LINES OF GREAT SIX ADD TO SAFETY

Weight of Body Carried Close To Ground Providing Greater Comfort

Although luxury is the keynote of the Willys-Knight Great Six models which are being exhibited at the automobile show unusual care has been taken by the Willys-Overland engineers in designing this group of Knight engine cars to provide for comfort, smoothness and safety.

A double drop frame is employed to secure low swung weight, this method of engineering carrying the body close to the ground to provide riding smoothness and at the same time giving road stability to the car. This method of construction permits fast driving without the dangers that are apparent in cars where the bodies are carried higher in the air. An additional safety factor is provided in the 4-wheel brake equipment, standard equipment on all products manufactured by the Willys-Overland company.

Felflex spring shackles also form a part of the standard equipment on the Willys-Knight Great Six line. These shackles absorb all road shocks and permit free spring flexure, reducing to a minimum the wear on every part of the car.

The Great Six line is powered by the improved Willys-Knight six cylinder sleeve valve engine, capable of maintaining a high rate of speed hour after hour with a total absence of vibration at practically all speed ranges. It has an unusually fast get-away which is a great factor in the recognition of this car as an ideal type for driving in heavy city traffic. Engineers point out that the Willys-

Knight Great Six has ample power and speed to meet all demands, operates silently, efficiently, smoothly and economically, and is built to sustain a long life. The body line of the various models in the Great Six line are long, low and graceful, while the interior appointments carry out the aim of Willys-Overland engineers tending to luxurious appointments, dash and the utmost serviceability. The rich color com-

binations blend harmoniously with the interior upholstery. Willys-Overland officials point to the satisfactory sales record of the Willys-Knight Great Six during the past year as a tribute to its performance and high standing in the quality car field. Argentina-Chile Hi-way Started Work has been started for constructing the International highway from Los Angeles to

Cumbre on the border between Argentina and Chile. The Argentine government has voted the necessary money to unite the road with Mendoza, so that in a short while it will be possible to go by automobile from Santiago to Mendoza in ten hours. Next morning and arrives at 12 midnight; most expensive rail trip for its length in the world, costing approximately \$125.00.

CAREFUL

and exacting Business Men buy more than \$65,000,000 worth of Graham Brothers Trucks and Commercial Cars a year

- \$670 3/4-Ton Commercial
- \$895 1-Ton G-Boy
- \$1245 1 1/2-Ton
- \$1595 6-cyl. 2-Ton
- \$770 1/2-Ton Deluxe Panel Complete

Bonesteel Motor Co. 474 So. Commercial Telephone 423

GRAHAM BROTHERS TRUCKS

Sold and Serviced by Dodge Brothers Dealers Everywhere

Built by Truck Division of Dodge Brothers, Inc.

Sweeping To New Triumph

World's Most Famous Six Tops Its Greatest Value in Fineness, Smartness, Performance

Reflects Tomorrow's Vogue

Wherever shown, the New Hudson Super-Six has been accorded a public ovation of greater success to the world's most famous "Six."

With the Super-Six principle and its companion invention combining the fullest attainment of motor smoothness and high-compression efficiency—

—with reliability that is all motordom's comparison standard—

—and with riding and handling ease that are not surpassed if equalled anywhere, Hudson's new models bid for an equally high place in beauty, fineness and body quality.

Here is quality that you can see in every detail of the most finished Hudson ever built. Come and examine the New Super-Sixes. They will give you an entirely new view of motor car values.

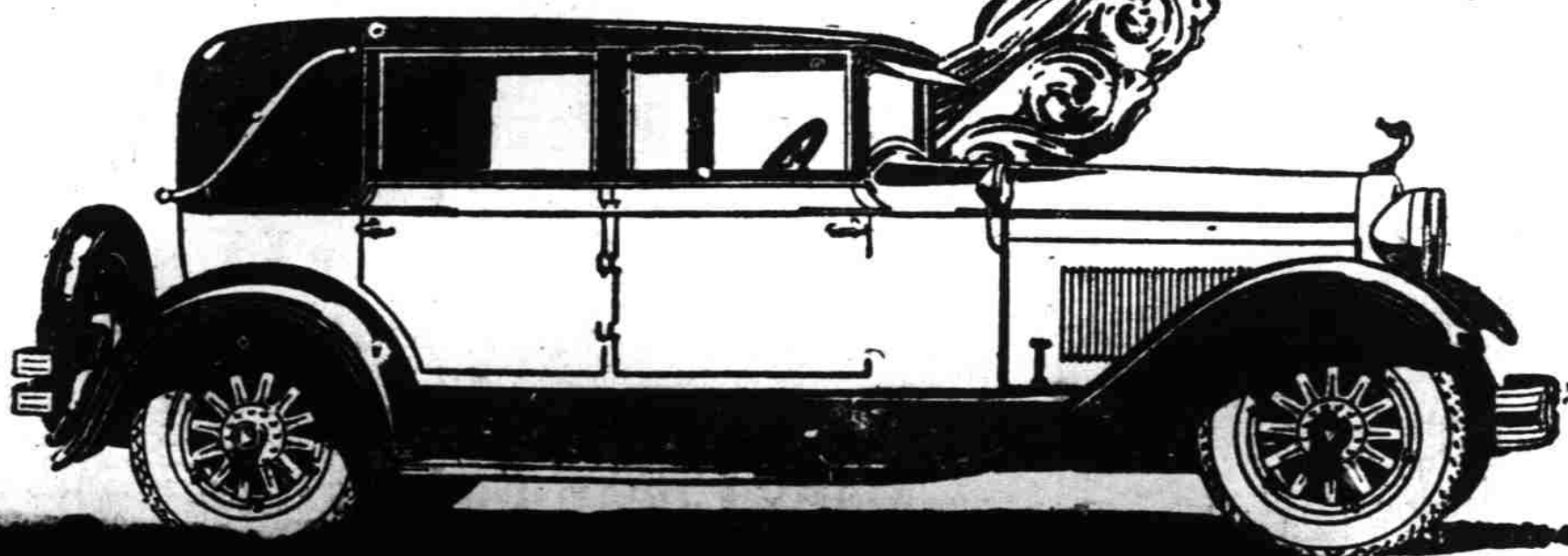
The NEW HUDSON Super-Six

NEW HUDSON PRICES

118-inch chassis
Coupe (Rumble Seat \$30 extra) \$1265
Sedan \$1325 - Coach 1250

127-inch chassis
Standard Sedan \$1450
Custom Landau Sedan 1650
Custom Victoria 1650
Custom 7-Pass. Sedan 1950

All prices f.o.b. Detroit, plus war excise tax
Buyers can pay for cars out of income at lowest available charge for interest, handling and insurance.



for Economical Transportation

CHEVROLET

Bigger and Better

The Coach

New Features -

that set a new standard in automobile value

Reduced Prices! The COACH \$585

- The Touring or Roadster \$495
- The Coupe \$595
- The 4-Door Sedan \$675
- The Sport Cabriolet \$665
- The Imperial Landau \$715
- Utility Truck \$495 (Chassis Only)
- Light Delivery \$375 (Chassis Only)

All Prices f. o. b. Flint, Michigan
Check Chevrolet Dealer's Prices
They include the lowest handling and financing charges available.

For years, Chevrolet has pioneered into the low-price field the features of advanced design found on the world's finest automobiles. And never has this progressive policy been better exemplified than in the Bigger and Better Chevrolet—with its marvelous new Fisher bodies, its numerous notable mechanical advancements, and its thrilling new performance. Only a close personal inspection can convey any adequate impression of the quality and value provided in this sensational new car. In beauty, in comfort and in performance, it climaxes every previous achievement in the development of luxurious transportation at low cost! Come in today and go for a demonstration. It will take you less than half an hour to learn why the Bigger and Better Chevrolet, with its many new features, is everywhere hailed as the world's outstanding motor car value!

DOUGLAS MCKAY CHEVROLET CO.

430 North Commercial Street Telephone 745

Associate Dealers:
Chevrolet Co., Dallas
Dorr, Woodburn
Wm. Predeck, Mt. Angel
Ball Bros., Turner
Halladay's Garage, Monmouth

QUALITY AT LOW COST