

**BRAKES FEATURED;
1928 HUPP SIXES**

Unusually Simple, Remarkably Free From Service Need Say Engineers

A new braking system, called the Hupmobile-Midland (steel-draulic), combining the best principles of the hydraulic and mechanical four-wheel types, is one score or more new features of the new 1928 Hupmobile Six. The new system is remarkably positive and of unusual simplicity. Hupmobile engineers point out. Toggles, clevises, pins and other parts heretofore considered detrimental to the mechanical systems almost completely obviated. Operation is direct through flexible steel cables, enclosed in specially designed conduits.

Decided superiority over all other four-wheel brake systems is also claimed for it in eliminating brake drag. An increase of from 10 to 15 per cent in effective power over any other four wheel brake system, through elimination of this brake friction and faster brake release, is claimed for it. Consequent freedom from "freezing" of brakes, longer tire life and more economy from gasoline naturally follow, it is pointed out.

This elimination of brake drag is made possible by the system's permitting sixty-two thousandths of an inch clearance between the drums and linings, as against only ten thousandths of an inch, or even less, in other four wheel systems.

The new system also affords positive brake control under all road conditions, the engineers say. Even violent axle movements and spring deflections do not affect this control, they point out.

Coupled with this elimination of brake drag is also a remarkable freedom from brake attention and adjustment. Hupmobile engineering test cars have now been in almost continuous operation for more than 18 months without a brake adjustment of any kind.

This freedom from service also extends to the brake lining, which is a new type special moulded asbestos. It has three times the life of ordinary brake lining and, consequently, three times its freedom from replacement.

The new system is of the internal expanding type which has found rapid favor among the higher quality types of cars. The entire mechanism is sealed against exposure to dirt and water. Each brake has only a single piece shoe, half of it flanged. Each shoe requires but little pedal pressure to make it operate against the drum, due to the utilization of the self-energizing principle. Grabbing is prevented, as the flanged section eliminates a full wrapping effect.

The parking brake is hand operated and utilizes the same system of four brakes as the foot pedal.

Franklin Advocates Safe Driving As Regulation

The agitation on speed regulation as a preventive of automobile accidents could profitably be turned to the promotion of the public of safe driving, in the opinion of H. H. Franklin, president of Franklin Automobile company. "If everyone would adopt the slogan 'I will not take chances', there would be a much quicker reduction in accidents than by any other means. Fast driving is not necessarily unsafe driving as the statistics on accidents bring out. The careful driver, even though a speedy driver, is never a menace to traffic.

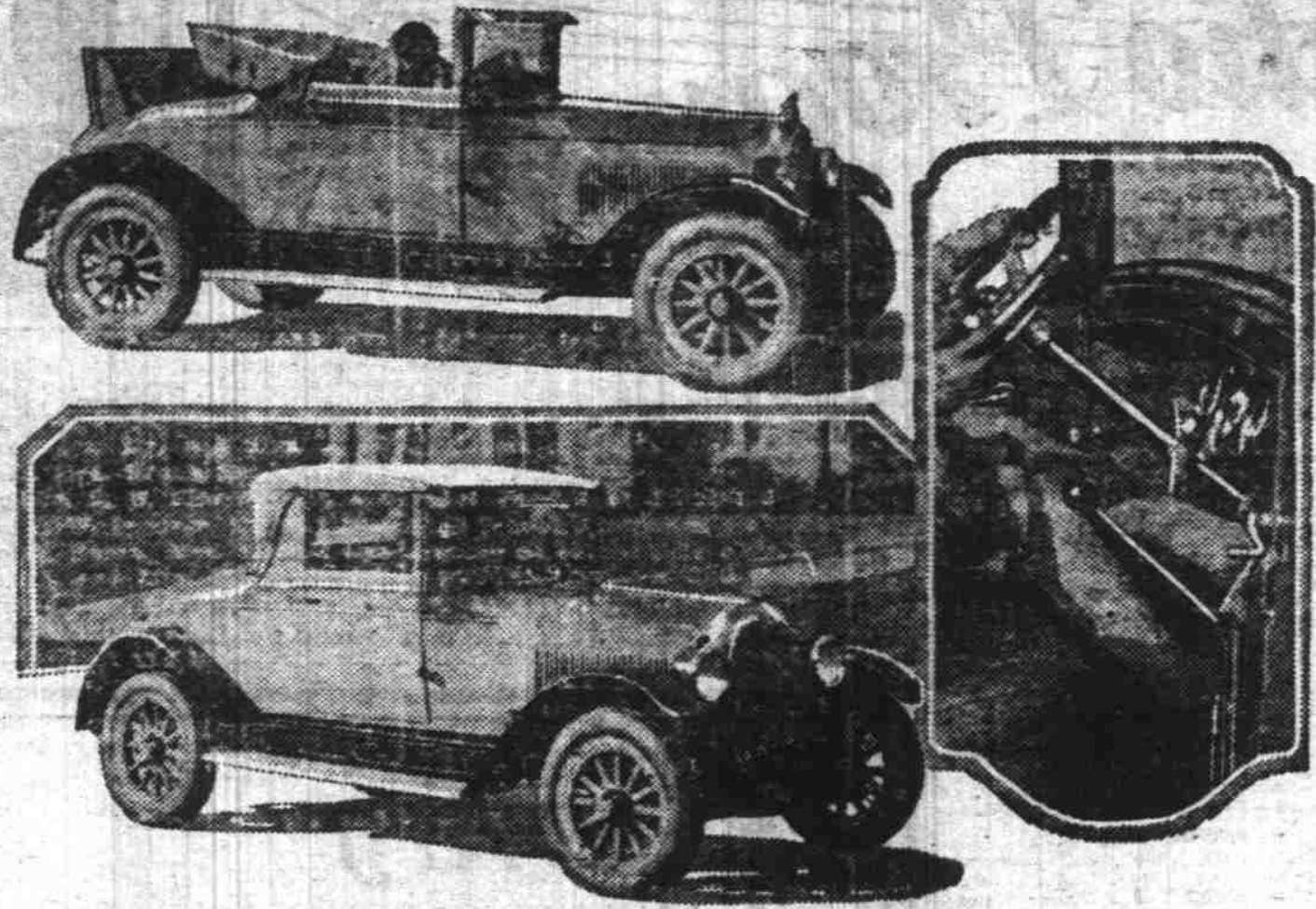
"The full purpose of the automobile to accelerate travel can be secured best by means of safe driving which makes speed usable. The demand of the times is not so much speed restriction as it is towards making speed safe. The automobile is fundamentally a means of transportation, and its development and free use are dependent on the same influences which have always affected transportation, and its development and free use are dependent on the influences which have always affected transportation. Automobile building, road building and traffic laws should be influenced by this fundamental."

Oregon State Association Makes Digest of Some Laws

The Oregon State Motor Association has made a digest of the laws of the 18 states and the District of Columbia, which refer to the issuance of drivers licenses. The lowest age limit is 14 years which occurs in three states; namely, California, Michigan and West Virginia. Two states, Connecticut and New York require the operator of an automobile to be 19 years of age, which is the highest limit in any of the states requiring drivers license. New Jersey, however, issues junior operators licenses to persons between 16 and 18 years of age after said persons pass an examination.

LEFEBVRE AND BROWN NAME Gordon LeFebvre, who recently returned to the Oakland Motor Car company as vice president in charge of operations, has been succeeded in his former position as vice president and general manager for General Motors of Canada, by H. A. Brown, former comptroller at the Canadian factories. Mr. LeFebvre and Mr. Brown are said to be among the youngest higher executives in the automotive industry.

WHIPPET CABRIOLET COUPE



The Whippet Cabriolet Coupe, is the smart new model just announced by Willys-Overland as an addition to this line of popular motor cars. The upper picture shows the new Whippet Cabriolet Coupe converted into a roadster, top folded back, and rumble seat ready for two additional passengers. The lower picture shows the new Whippet model as a closed car with rumble seat folded into place. The inset shows the spacious front compartment. The Whippet Cabriolet Coupe will accommodate four passengers, two in the front seat and two in the rumble seat which is built into the rear deck.

CHANDLER ANNOUNCE NEW SPECIAL SEDAN

DeLuxe Sedan Latest Addition To Many Fine Models of Chandlers

Following the advanced model in body design and color harmonies, Chandler announces an attractive new model, called the Special Six De Luxe Sedan. It is done in two-tone Fawn with fenders and splashers finished in fawn to match the body.

"The elimination of the prossc black from the fenders greatly enhances the appearance of this new creation," says Mr. MacDonald of the MacDonald Auto company, Chandler dealers, where the new model is now being displayed.

"Another outstanding feature with this new model is that instead of having the regular artillery-type wood wheels, wire wheels are standard. The method of mounting the extra wheels directly back of the front fenders, (which are recessed to provide the proper position) afford an appearance of a custom built model.

"An optional color scheme is Blue Devil Blue throughout the body with Grenada Blue window reveals and mouldings. A gold stripe on the mouldings and

wheels provides a pleasing contrast.

"The increasing demand for a moderate priced closed car, embodying the luxury of expensive cars has inspired the presentation of this new Special Six Sedan De Luxe," states Mr. MacDonald. "Broad, high-backed seats, upholstered in blue-grey mohair, with arm rests in the rear, makes even the longest tour afford real relaxation.

"A theft-proof electric ignition lock is standard equipment. Other late improvements include a light control from the steering wheel, adjustable ventilating windshield, nickel-plated, twin-beam headlights and cowl lamps to match.

"The De Luxe sedan is powered by the Chandler Special Six motor based on the high compression Pike's Peak power principle, which is responsible for additional power and economy of operation. This power plant has many unusual advantages such as high pressure lubrication, exclusive manifold design, thermostatic control of the cooling system, economical carburetor, honed cylinders and air cleaner and oil filter equipment.

"Special attention has been paid to the construction so as to incorporate features which make for long car life and low operating costs.

"Chassis lubrication is accomplished by means of the automatic 'One Shot' system. Pressure on a plunger with foot completely lubricates the chassis in two seconds.

"With the modern mechanical features and the beautiful, modernized appearance, both inside and out, this new Chandler creation is an outstanding motor car value in the low priced car field," states Mr. MacDonald.

Prominent Physician Purchases Franklin Car

Dr. Edward Van Duy, prominent physician-surgeon of Syracuse, N. Y., bought the first Franklin Airman sold in that district when the Airman was announced recently. This represents the doctor's fifth Franklin during a long period of ownership, having purchased his first car in 1904.

Doctors represent 23 per cent of Franklin's total yearly customers. According to numerous statements by these owners, the fact that there is no water to freeze in the cooling system eliminates car worries in the winter time. An electric primer in the carburetor heats the gas before starting so that on the coldest nights there is no delay in getting to patients. This accounts for the large number of Franklins purchased by doctors, Franklin officials claim.

Thirty-five Lane county bank employees are enrolled in the course started by the Lane county chapter of the American Institute of Banking. The class meets at Eugene each Tuesday evening.

WHIPPET AVERAGES 44.4 MILES AN HOUR

Stamina, Speed and Power Demonstrated Under Official Test

Piloting a Whippet Collegiate Roadster, "Speed" Bradford added another achievement to the long distance list of Whippet accomplishments when he ended a 3,924-mile journey in 88 hours, 23 minutes at an average of 44.4 miles an hour. This unusual stamina and speed record was made a few days ago at Omaha, Neb., under the official observation of newspapermen.

At the conclusion of the test which was staged to demonstrate the reliability and stamina of the Whippet, Bradford and his Whippet were given a great ovation by the crowd which was present at the finish. "Speed" responded to the applause, declared that the entire performance of the Whippet under such adverse conditions was a revelation to him. He said that many cars, selling even in a higher price class would not have stood up under the grueling test which the Whippet was forced to undergo.

The entire Whippet test lasted a total of 168 hours, consisting of nine 453-mile laps, one each 12 hours. Twenty stops of five minutes each were made on each lap. As the Whippet spurred on mile after mile, hour after hour and day after day, a tremendous interest was aroused over the entire route covered by the record-breaking Whippet.

Every type of road was included in the Whippet's route. Many hills with steep grades and dangerous curves also were included but Bradford reported that in every instance the Whippet responded to every demand of the wheel, throttle and brakes.

Although no official check was kept of the gasoline consumption, Bradford estimated that the Whippet averaged close to 25 miles to the gallon which included the idling time of the motor while the Whippet made the scheduled stops.

The itinerary included Council Bluffs, Plattsmouth, Millard, Ashland, Greenwood, Seward, York, Osceola, Columbus, Winster, West Point, Snyder, Morse Bluff, Ames, Fremont, Wahoo and Meade.

Auto Dealers Use Plane To Hasten Drive-Away

The industry now is using its agile offspring, the airplane, in setting the pace for modern business.

One motor manufacturing company and a motor fuel company already possess planes in which their executives are carried rapidly to points where their services are needed.

But a brand new angle in the growing association between land

motoring and "air motoring" developed recently when two automobile sales executives flew from Milwaukee to the Oakland Motor Car company factory at Pontiac, Mich., in order to conduct an urgently needed drive-away of Oakland and Pontiac Sixes.

The two men, K. D. Moore, general sales manager of Hokauston-Thompson, Inc., Milwaukee, and his assistant, W. H. Hope, needed immediately a large number of cars to fill the orders of waiting customers. They chartered a commercial plane, and took to the air

at 5 a. m. Four hours later they were in Pontiac where they took charge of the drive-away back to Milwaukee.

INDIAN MEDICINE

RACINE, Wis.—Seventy five common plants, barks, seeds and roots composed the Indian's pharmacopoeia, says the Wisconsin Agricultural History society. Milk-wood, plantain, alfalfa, jack-in-the-pulpit and Indian turnip roots were among plants from which medicine was made.

VICK BROTHERS USED CARS

- 1926 Pontiac Coach - - \$585.00
- 1927 Pontiac Coupe - - 685.00
- 1927 Pontiac Coach - - 750.00
- 1927 Ford Coupe - - 425.00
- 1927 Chevrolet Coach - - 625.00
- 1925 Chevrolet Coupe - - 425.00
- 1925 Star Touring - - 250.00
- 1925 Willys Knight Sedan 650.00
- 1925 Ford Roadster - - 225.00
- 1925 Ford Touring (Ruckstell) - - 175.00
- 1923 Ford Roadster - - 145.00
- 1923 Ford Touring - - 100.00

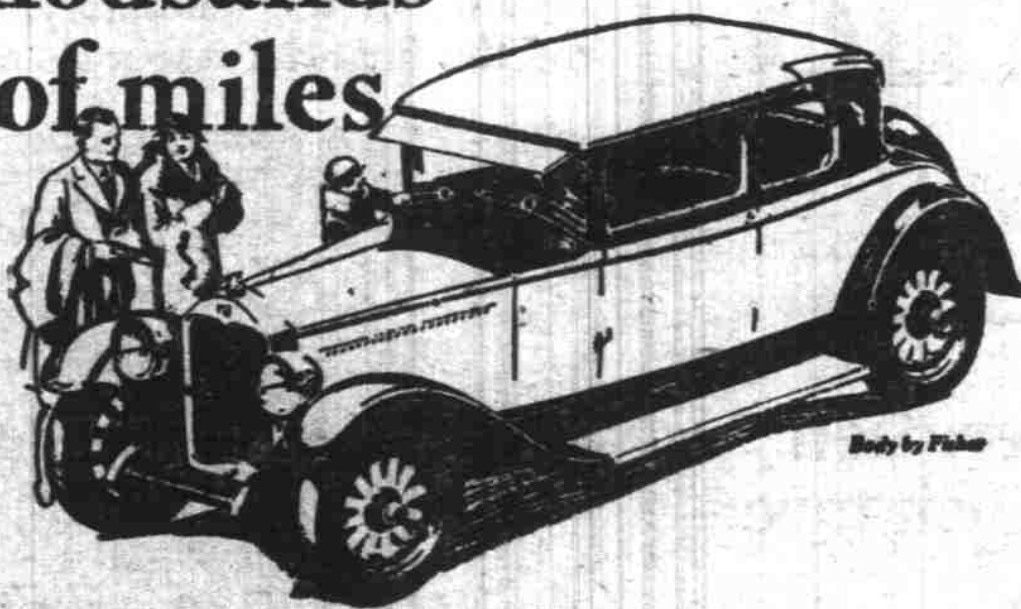
Vick Brothers

Phone 1841

The House that Service Built

280 South High St.

Make this Christmas last for thousands of miles



-a BUICK for Christmas

What gift could be more appropriate than a Buick for 1928?

Buick provides princely luxury and beauty . . . economy, dependability and long life . . . performance, power and get-away without peer. Buick as a gift will make this Christmas last for thousands of miles. There are 16 Buick models, ranging in price from \$1195 to \$1995 f. o. b. Flint. All can be purchased on easy G. M. A. C. terms, the most desirable in the industry.

Make someone supremely happy this Christmas. Give a Buick for 1928. Delivery will be made, if you wish, at your home Christmas morning.

SEDANS \$1195 to \$1995 COUPES \$1195 to \$1850 SPORT MODELS \$1195 to \$1525

All prices f. o. b. Flint, Mich., government tax to be added. The G. M. A. C. financing plan the most desirable, is available.

WHEN BETTER AUTOMOBILES ARE BUILT, BUICK WILL BUILD THEM

OTTO J. WILSON

388 North Commercial

Telephone 226

Everybody knows

about the Superior Smoothness of a Six, the Finer Quality of a Fisher Body. That's why a price of \$745 makes the Pontiac Six such an unusual "Buy"

VICK BROS., Salem, Oregon

ASSOCIATE DEALERS

Beverly Motor Co., Albany, Oregon; Benton Motor Co., Inc., Corvallis, Oregon; Silverton Motor Car Co., Silverton, Oregon; Fred T. Bilyeu, Seio, Oregon; Bones Brothers, Turner, Oregon; C. J. Shroove & Son, Dallas, Oregon; Henry C. Holleman, Harrisburg, Oregon; T. D. Pomeroy, Independence, Oregon; F. L. Miller, Aurora, Oregon; N. J. Arnold, Monmouth, Oregon; Toledo Super Service Station, Toledo, Oregon.

PONTIAC SIX