

HIGH COMPRESSION ADVANTAGES NAMED

Willis-Overland Pioneer in This Type of Power Plant Says Dealer

High compression in modern automobile engine design offers several distinct advantages over motors of medium or low compression. In addition to the important feature of increased power and efficiency, according to S. Barber, local Willis-Overland dealer. In view of his wide experience with the high compression type engine employed in the Willis-Knight cars, Mr. Barber gives some interesting views on this subject which is a leading topic in the automobile field today.

"With motor car buyers showing greater interest than ever in engines or the high compression design, and with many automobile manufacturers turning to this type of power-plant in the modern car, it is interesting to note that owners of Willis-Knight cars for more than ten years have been getting all the advantages of high compression—performance.

"High compression in its ordinary sense means that the gasoline mixture is highly compressed in the combustion chamber with the result that more force is given to the piston in its downward stroke after the explosion. This additional force on the piston furnishes more power to the engine. Since there is virtually no increase in the amount of fuel consumed when higher compression takes the place of lower compression in an engine of the same size, the greater amount of power given off by the

higher compression motor enables it to do the same amount of work with less effort, all of which makes for increased fuel economy.

"The Knight sleeve valve engine, because of its patented design, lends itself more readily for high compression service than engine of other types. Certain limitations are imposed on those of other design which are not found in the sleeve valve engine.

"The cylindrical shape of the combustion chamber surmounted with a dome shaped head carrying the spark plug in the center, is typical in the Knight engine design. This produces the full force of the explosion directly to the head of the piston. The ideal location of the spark plug in the center of the compressed fuel charge, results in the spark traveling the shortest possible distance. This assures a speedy burning of the charge and the resultant transmission of extra energy.

"It is important to note that the Willis-Knight engine works as efficiently and as smoothly when ordinary gasoline is used, whereas in other types of high compression engines, to obtain freedom from "knocks" it is necessary to use one of the several special brands of gasoline made especially for high compression engines. This is a decided factor in the economical operation of the Knight powered cars."

"YEAR OF PLENTY" SEEN BY NASH MAN

(Continued from Page One)

er or pick or \$22.50 a bale, and about \$3.50 a bale for ginning and bagging and ties, or a total of \$26.00 for a 500 pound bale. When lint cotton was selling for 16 cents a pound, or \$50 a bale, the farmer had \$24.00 left out of each bale to cover the land rental, seed, planting, fertilizer and cultivation, or \$284,000,000 for the 16,000,000 bale crop. At the present price of 20 cents a pound for lint

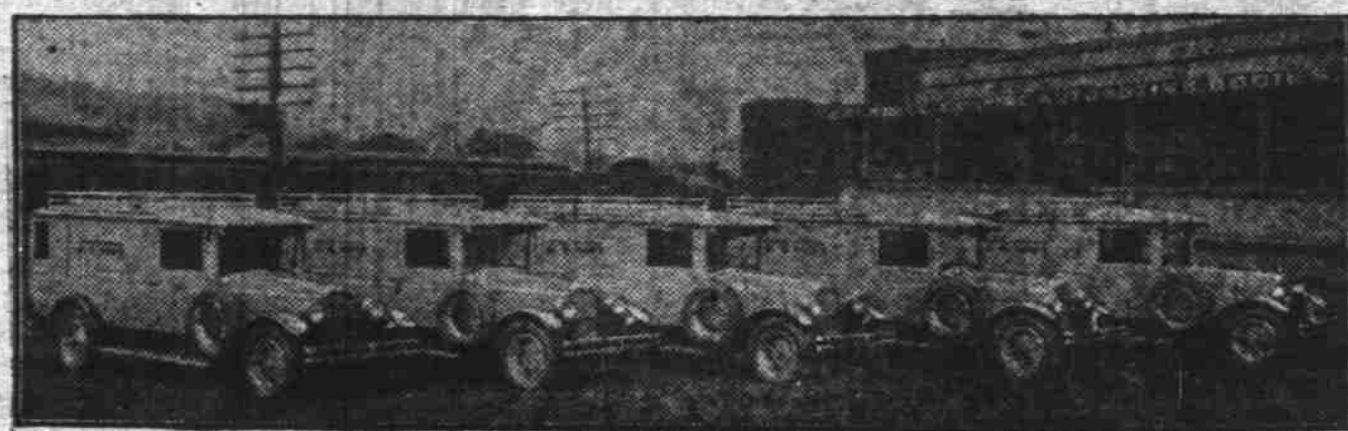
cotton, a 500 pound bale brings \$100.00, but the cost of gathering and ginning remains at \$26.00 and leaves the farmer \$74.00 a bale to cover the same items of producing and, on a 13,000,000 bale crop, this amounts to \$962,000,000 or \$578,000,000 more than for the larger crop of last year.

"It must also be remembered that out of the 1,500 pounds of seed cotton, there remain approximately 1,000 pounds of cotton seed, which, due to the smaller crop alone, is bringing a higher price, but on account of the high price of corn, and the demand for cotton seed by-products for feeding purposes, cotton seed should bring still higher prices and, due to the high price of lard, which is governed by the price of hogs, cotton seed oil is more in demand and will bring higher prices. All of these things bring added prosperity to the southern farmer.

"It must also be remembered that there was some curtailment in acreage planted to cotton and that this land was planted to feed crops, which reduces the amount usually spent by the southern farmer for feed stuffs.

"This improvement in the con-

BUICK AMBULANCES SERVE UNCLE SAM



The Buick chassis is the nucleus of the five U. S. Navy ambulances shown here. Each has a capacity of 12 passengers, or of four stretchers and two attendants, in the rear compartment. The ambulance bodies were built by the Flexible Company, of Loudonville, O., on Buick chassis bought from a Washington, D. C., Buick dealer.

dition of the cotton farmer will give greater purchasing power to the South and will greatly stimulate business in that section and must inevitably be felt throughout the entire country.

"Recent reported earnings of industrial concerns have shown some falling off in profits, but it is too early for the prosperity of our agricultural population to find its way into channels of trade and this temporary lull in business must not be confused with the outlook for 1928.

CALIFORNIANS MAP AUTOMOBILE HIGHWAY

(Continued from Page One)

new auto road will reach, is San Ignacio mission, one of the grandest and sturdiest of the chain built by the Franciscans. The structure is of solid stone. It was erected largely through the donation of 1,500,000 pesos by the queen of Spain.

There are many quaint fishing towns in the territory and it is rich in copper, onyx and other minerals.

Giant cactus growing more than 50 feet in height, are scattered over the central wastelands.

COMPRESSION RINGS PASS FOUR TESTS

(Continued from Page One)

of the thickness of the ring. If the ring is not perfectly round a ray of light is seen between the outer edge of the ring and the side of the fixture. In such cases the ring is rejected.

To make positive that rings are flat and parallel, each ring is placed upon a hollow, gourd-like device containing an electric lamp and having a perfectly flat, circular top approximately three inches in diameter. A lid-like cover is lowered over the ring. As the lower surface of the lid and the upper surface of the fixture are parallel within .0001 inch, the slightest variation in flatness or parallelism is instantly shown by a light ray.

Oldsmobile engineers have determined that a gap with limits of

.008 to .013 inch gives most efficient results. All compression rings in Oldsmobiles must be within these limits, having to pass a test by being placed in a fixture and the gap measured by a "feeler" or thickness gauge.

The thickness of the ring is tested on another gauge to insure that it is within .0005 inch of the dimension specified.

STARTLING CHANGES EXERT INFLUENCE

(Continued from Page One)

learned to give it the attention which will insure freedom from battery failure, lubrication trouble, or undue tire wear. And the car which they eventually pass along to its second user has had the benefit of their extended knowledge. It is almost certain to give better service than the used car of ten years ago, when the percentage of "first owners" was higher.

It would probably prove surprising if every car on the street were to display a placard stating whether it was in the hands of original, or a subsequent owner. That the proportion of "new" is comparatively small may be gathered from the fact that there are some 22,000,000 cars licensed in the country today, while the yearly production of new cars is only about 4,000,000. Such a comparison makes it obvious that the used car business has advanced in vast proportions—proportionally speaking, which would be incredible, were not the used car industry a thoroughly progressive element in transportation.

CARE OF CARS TOLD BY CHRYSLER

(Continued from Page One)

cleaned and adjusted, rotor and distributor cleaned, cables inspected and replaced if necessary, and timing reset.

Other important items on the schedule include cleaning of gas tank, vacuum tank, carburetor and gas lines, and adjustment of the carburetor to proper winter setting. The cooling system should be thoroughly flushed, worn hose replaced and anti-freeze solution poured in.

As a finishing touch, wheels

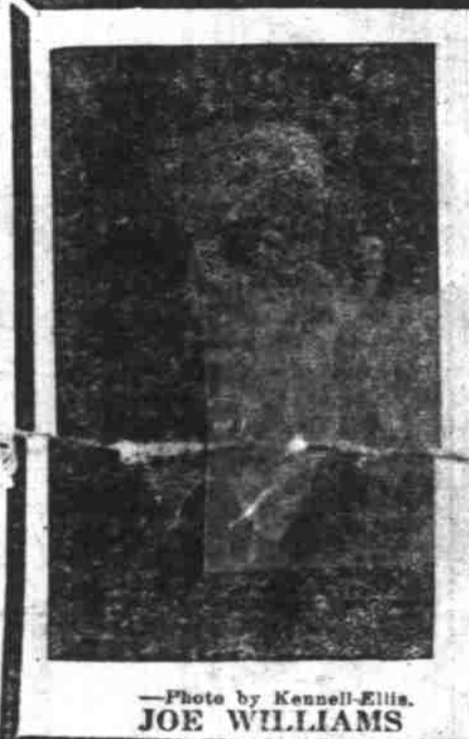
should be aligned to prevent tire wear, and body bolts and spring clips should be tightened to safeguard against body squeaks and spring breakage. With the adjusting of the clutch, brake pedals and brakes the work of preparing for cold weather driving will be completed and the car

has saved himself a great deal of difficulty later on.

The Fitzgerald-Sherwin Motor Co. will be glad to supply further information on proper winter care to any interested motorist.

As every boxer knows, a good punch in the ring is worth two he pounds on the weighing-in scales.





JOE WILLIAMS

"The Battery Man"

See him today—He'll save you money and give you service that satisfies

STORAGE BATTERY

Willard

Corner Center & High
Telephone 198

NASH

Leads the World in Motor Car Values



Advanced Six 4-Door Sedan NOW

Richest Beauty

Style that catches the eye

Nash STYLE in body design is of extreme distinction—in the best of taste. Nash cars, inside and out, are the SMARTEST looking you'll see on the street.

Fashionably low to the road, on small wheels, and finished in beautiful color harmonies, they capture the eye and admiration instantly.

The big Advanced Six 4-Door Sedan pictured above is offered in two different color combinations, at no extra cost. Window and door panels, instrument board and its crown panel, all are richly done in walnut effect. There are shirred door pockets, vanity case

and smoking set, leather mounted. Finely tailored, form-fitting cushions of superb button-tufted mohair contribute to its restful luxury.

Nash powers it with the big 7-bearing motor, with clutch, flywheel and crankshaft integrally balanced. That prevents vibration anywhere through the full range of speed and power.

Come DRIVE it today. Try its special EASY-steering mechanism. Test its springs of secret process alloy steel that make Nash the smoothest riding car you ever sat in. Come in at once and we'll talk SPECIAL terms on the car you're still driving.

ENCLOSED MODELS

Advanced Six Series
Extra Long Wheelbase

7-pass. Sedan	\$2268
5-pass. Ambassador	2202
4-pass. Coupe (Rumble Seat)	2030
4-pass. Coupe	1851
5-pass. Sedan (3-door)	\$1902
5-pass. Sedan (2-door)	1070
Special Six Series	
5-pass. Sedan (4-door)	\$1502
5-pass. Sedan (2-door)	1430
4-pass. Cabriolet	1505
2-pass. Coupe	1370
Standard Six Series	
5-pass. Landau Sedan	\$1258
5-pass. 4-door Sedan	1183
5-pass. 2-door Sedan	1062
4-pass. Cabriolet	1163
2-pass. Coupe	1041

F. W. Pettyjohn Co.

130 North Commercial
"AFTER WE SELL—WE SERVE"



A daring American flier dropped out of the night on Le Bourget—and won the adulation of the world.

An inspired American golfer conquered famed St. Andrews—and received the applause of kings.

A new American motor car swept into the spotlight less than four months ago—and encountered a public reception once undreamed-of. . . . A brilliant new car: vivid, poised, distinguished, staunch—the Oakland All-American Six. A car with all those qualities Americans admire. . . . a car on which America has already bestowed success.

VICK BROS., Salem, Oregon

ASSOCIATE DEALERS

Eberly Motor Co., Albany, Oregon; Boston Motor Co. Inc., Corvallis, Oregon; Silverton Motor Car Co., Silverton, Oregon; Fred T. Bilyeu, 840, Oregon; Bones Brothers, Turner, Oregon; C. J. Shreve & Son, Dallas, Oregon; Henry C. Hollemo, Harrisburg, Oregon; T. D. Pomroy, Independence, Oregon; P. L. Miller, Aurora, Oregon; N. J. Arnold, Monmouth, Oregon; Toledo Super Service Station, Toledo, Oregon.

OAKLAND

ALL-AMERICAN SIX

PRODUCT OF GENERAL MOTORS