

### CARS TO BE BUILT TO SUIT ANY TASTE

#### Chrysler To Equip With Color, Upholstery and Equipment Desired

An announcement of unusual interest comes this week from the Chrysler headquarters in the form of a notice that the company is broadening its special service to meet the growing demand for cars with the special equipment according to the taste of individual purchasers.

The company is advising its distributors and dealers that it is now prepared to give prompt attention to orders for special color, upholstery and equipment other than standard in its four great lines of cars which cover all of the four great markets, and is in a position to deliver at slight extra cost a large variety of optional equipment and accessories for customers who desire unusual and distinctive appointments for their automobiles.

The list of equipment to be supplied through the new service includes among other numerous articles wood, disc and wire wheels, fenders with wells, tire covers and tire locks, clocks, cigar-lighters, special type bumpers, trunks, trunk cases and racks, heaters, water indicators, monograms and non-shatterable glass, in addition to providing for special upholstery and color. Some of this equipment is now standard on certain Chrysler models and by the new plan they will be available on all other cars on the company's production.

The lists prepared by the company in response to a growing demand for factory built cars in special colors, upholstery and equipment to meet the individual taste of customers who require something different from standard production cars. The scope of articles included is so comprehensive that it will enable dealers to supply any kind of equipment desired.

The Chrysler Corporation has already in operation a special division to assist dealers in handling orders for specially built cars and the present addition to its facilities is devised to extend this service to cover equipment and accessories for the full field of Chrysler production.

Officials of the company state that the demand for all four of their cars—which now included the New '52' the Great New '52' the illustrious New '31' and the Imperial '40'—has been exceedingly strong throughout the year, and they anticipate that the inauguration of the special service will increase it to even larger volume.

### AUTO FATALITIES IN AUGUST 2000

#### Record Mounts up to Enormous Total of Sixty Two Deaths Per Day

Motor vehicle fatalities in August totaled 2,000 in the United States; an average of sixty-two per day against fifty-eight daily in July. This record is the same as that of August, 1938, and may be compared with fifty-two per day in August, 1937.

The total of the first eight months represented an increase of 2.1 per cent over 1938 but there are no indications that the total for 1939 will not greatly exceed the record of 1938. Here and there are indications of unusual reductions in fatalities due to exceptional and unusual safety of cars.

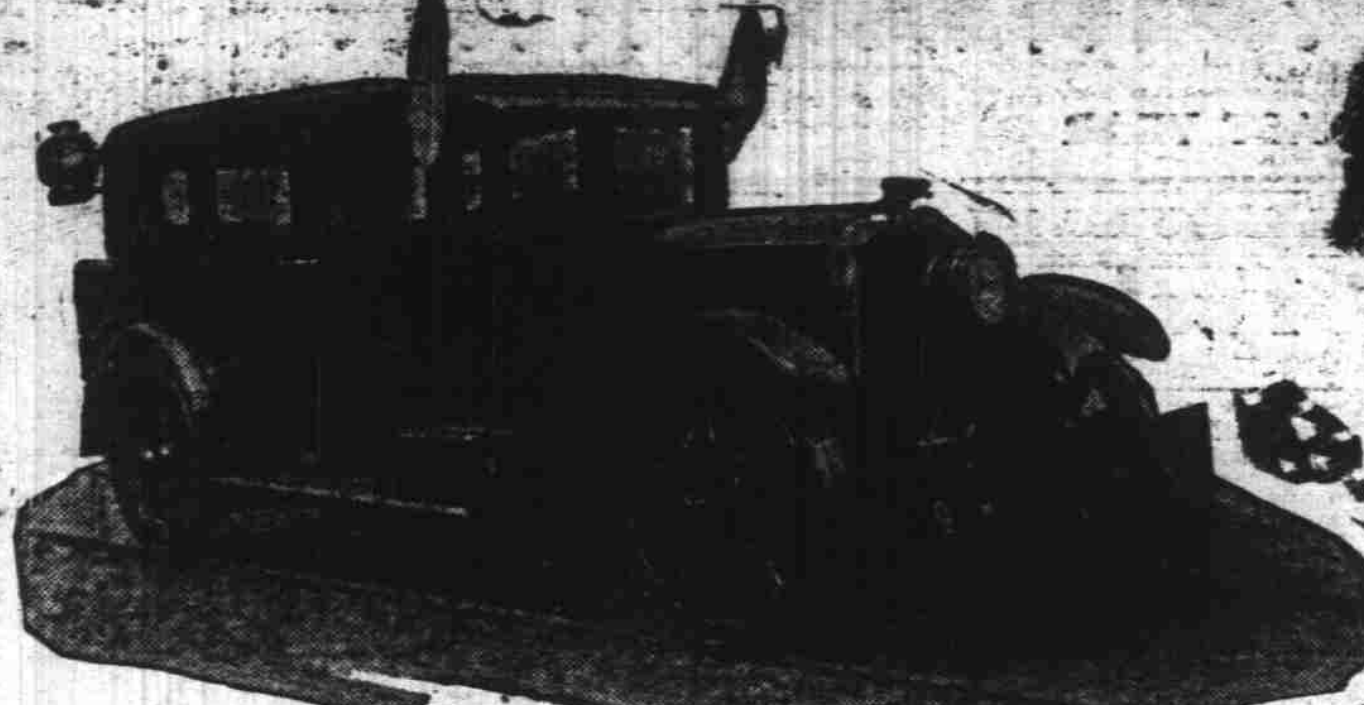
Newport, Iowa, has completed eleven months without a fatality and later records had shown two fatalities in the month of September which were also good records. They have been maintained since the beginning of the year. The record is a record of safety in a small town.

St. Louis, Missouri, has had no child fatalities for two months. They have accomplished a reduction of twenty-eight per cent in eight months.

Other cities who had favorable experience last year are not holding their own. In a considerable number of cities where the percentage was not as low as last year, the percentage is gradually increasing. The percentage in most cases is not as low as last year.

Maine has had a record of safety in the state highway system in Maine is maintained.

### BUICK BECOMES RAILROAD CAR



FLINT, Mich.—Buick's reputation for reliability has won it an unusual job on the lines of the Northern Pacific Railway Company, where a specially-adapted Buick Sedan is doing duty as an inspection car. Northern Pacific officials express themselves as "amazedly pleased" with the success of the innovation. The Buick was equipped for its special duties by the Pence Automobile Company of Minneapolis. Flanged steel wheels were substituted for the standard wheels, a rigid front axle was provided, and the steering apparatus was removed entirely. Its resemblance to a locomotive was heightened by addition of a cowcatcher.

### Condition of Highways Throughout The State

Portland, Oswego, Oregon City, Salem, Albany, Harrisburg, Junction City, Eugene, Cottage Grove, Roseburg, Grants Pass, Medford, Ashland, California state line: Paved.

West Side Pacific Highway Portland, Newberg, McMinnville, Corvallis, Junction City, Eugene: Paved.

Old Oregon Trail—West of The Dalles Columbia River Highway—The Dalles, Hood River, Portland, Rainier, Astoria, Seaside: Paved.

Old Oregon Trail—East of The Dalles Ontario, Huntington, Baker, Union, La Grande, Pendleton, Umatilla, Arlington, The Dalles. Oiled macadam entire distance in good condition.

Roosevelt Coast Highway Clatsop, Tillamook and Lincoln Counties—Astoria, Seaside, Molokai: Paved to Seaside, balance macadam.

Mohler-Miami Highway route via Brighton under construction and closed between Barview and Garibaldi; open and passable from Mohler to Barview. Traffic for Garibaldi and points south take county road via Foley creek which is gravelled throughout.

Miami-Tillamook, Hebo, Neokwin, Devils Lake, Siletts River: Part paved, part oiled macadam, balance macadam.

Siletts River, Otter Rock, Newport: Macadam surface.

Roosevelt Coast Highway Coos and Curry Counties—Lakeside, North Bend: Macadam. Ferry across Coos Bay.

North Bend, Marshfield, Coquille: Paved.

Coquille, Bendon, Fort Orford, Gold Beach, Brookings, California state line: Macadam. New ferry at Rogue River in operation.

Coos Bay-Roseburg Highway Pacific Highway—Camas Valley, Myrtle Point, Coquille: Macadam.

Ashland-Klamath Falls Highway Ashland, Klamath Falls: Macadam.

Williamette Valley-Florence Junction City, Chehalis, Gold-son, Blakely, Rainier, complete: Macadam.

Manhattan-Florence: Dirt road; impassable after rains.

Corvallis-Newport Highway Corvallis, Philomath, Westport, Toledo, Newport: Macadam.

McMinnville-Tillamook Highway McMinnville, Oregon: Paved.

Seaside, Willamina, Grande Ronde, Hebo, Tillamook: Part paved, balance oiled macadam.

Seaside Valley Highway Seaside, Clifton, McMinnville: Paved.

St. Paul Highway Newport, Government Camp, Hood River: Paved to Grants Pass; oiled macadam, complete to St. Paul. Government Camp and Warville closed to traffic.

The Dalles-Columbia Highway The Dalles, Union, Marshfield, Westport, Coquille: Macadam.

Wasco-Crane Highway Wasco, Crane: Line—Macadam. Redmond, Bend, Lapine, Croswell, Post Klamath, Klamath Falls: Oiled macadam.

Klamath Falls, Merrill, California state line: Macadam.

Oregon-Klamath Highway Pendleton, Washington state line: Paved.

Pendleton, Pilot Rock, Vinson, Newport, Hopedale, Junction: Macadamized except between Vinson and Lena which is under construction.

Klamath Falls-Lakeview Highway Klamath Falls, Bonanza: Macadam.

Crater Lake Highway Crater Lake, Rim View, Scotts: Oiled macadam; balance dirt road.

Paisley, Lakeview: Macadam.

He is just completing a tour of the "Big Sale" in the Pacific Northwest and Pacific Coast. The report and figures are being information secured from Chevrolet dealers in this large section.

A French woman, Mme. Rivera de la Souche, has made a success of a rubber plantation and cattle farm in Indo-China. The cross of the Legion of Honor was recently given her by the French government.

### GRAHAM TRUCK HAS BIG SALE INCREASE

New Sales Record Set For First Week in October. New Line Liked.

Graham Brothers, the truck division of Dodge Brothers, Inc., reports the largest business in its history for this time of the year with orders for commercial vehicles received during the first week of October totaling 1,455 units. This is an increase of 92 per cent over the corresponding week in October last year, according to an official statement from the company today.

Despite the fact that Graham Brothers plants in Detroit, Evansville, Stockton and Toronto have stopped up production several times in the last several weeks, the bulk of orders on hand is in excess of 3,500 vehicles, the highest point ever reached, the statement adds.

The present record business represents steadily growing demand since Graham Brothers' August announcement of its complete new line of trucks, headed by a six-cylinder 2-ton model. While all of the company's plants are now operating at capacity on a single shift basis, a further step-up in production schedules is indicated by the growing volume of orders.

In September, sales shipments of 1 1/2 and 2-ton models exceeded a new monthly record of 2,044 units, exceeding the 2,044 mark for the first time in 1939. Compared with August, the September record for these types represents a 8 per cent gain. Sales shipments of all Graham Brothers vehicles totaled 5,107 in September, an increase of 14.7 per cent over August, while export shipments of 1,115 trucks exceeded the August figures by 16.3 per cent.

Mother of Civil War Vet

Old age—she is 102—in fact Mrs. Susan Kennedy's sole claim to fame. She claims to be the only living mother of a son who fought and died in the Civil War. She lives at Columbus, O.

### TRADE YOUR USED TIRES IN.

A smooth and worn tire is worth more to us than it is to you.

## SAFETY FIRST—SKIDDING IS DANGEROUS

Kelly Springfields New Tread Design Has Three Predominate Features

1. THE MOST PERFECT NON SKID TREAD.
2. A HEAVY LONG MILEAGE TREAD.
3. THEY COST NO MORE THAN OTHER MAKES.

"JIM" SMITH & "BILL" WATKINS  
Complete Service Night and Day  
Center and Liberty Streets PHONE 44

### The YELLOW PENCIL with the RED BAND

EAGLE PENCIL CO.

MOYADO

## JOE WILLIAMS "The Battery Man"

See him today—He'll save you money and give you service that satisfies

Corner Center & High Telephone 198

Willard STORAGE BATTERY

## WHY BOTHER

With old worn out tires in cold, wet weather when you can get a liberal allowance on new tires.

Swap 'Em Now For Brand New SEIBERLINGS

Why Bother with the Old Ones Longer?

## Zosel's TIRE SHOP

198 S. Commercial

## The Added Power of Higher Compression

Plus Willys-Knight exclusive velvety smoothness

possible only with the Knight patented sleeve-valve engine, which gives sustained brilliant performance with any gas

The trend today is toward high compression. Willys-Knight offers you the advantages of high compression—greater speed, flashier activity—with none of its disadvantages—the need for special gas, undue wear and tear on the motor, engine knocking even after inconsiderable mileage.

Only the patented Knight sleeve-valve engine, because of the fundamental principle of its design, gives highest uniform compression at all times, at all speeds.

Drive a Willys-Knight, and your enthusiasm will be added to that of its present 300,000 owners.

Exquisitely beautiful new colors. Your choice of many distinctive colors, both in lacquer and upholstery.

NO VALVES TO GRIND — GROWS SMOOTHER WITH USE

## WILLYS-KNIGHT

S. BARBER  
333 Center Street

### Storage Fuel Transfer

### Crating Social and Long Moving Hauling

143 So. Liberty Phone 930