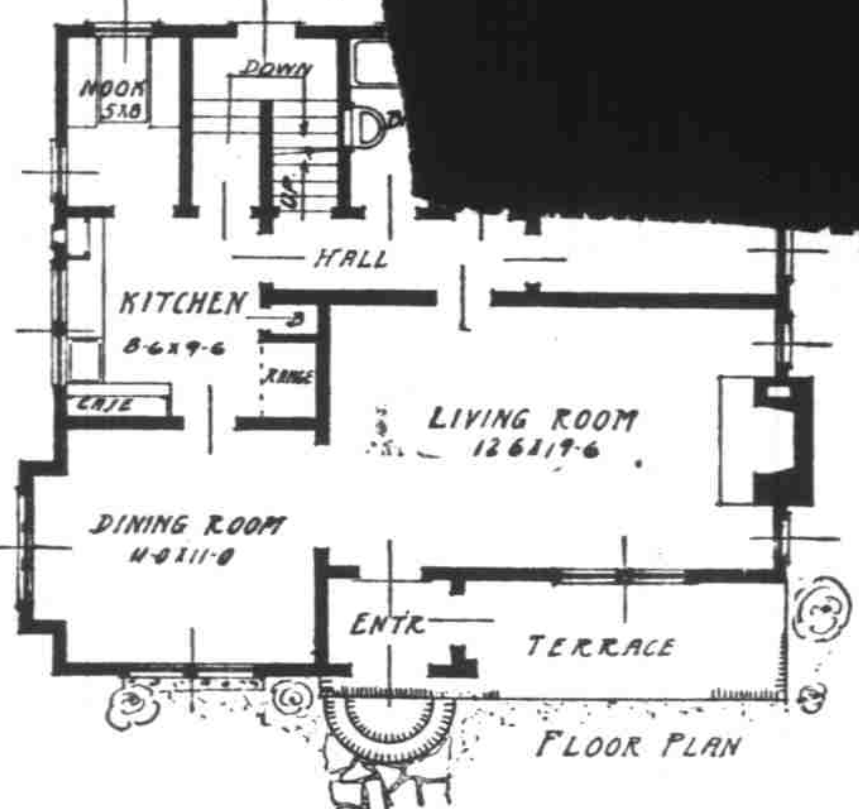


Snappy Five Room E

Plan No. 503



Much has been said about the five room house and its adaptability and practicability. To prove that it is practical we are showing here a house that has been very popular and is still a new design. The exterior design is one that is most adaptable on the coast. This design being in stucco and shingles, or stucco and siding will fit into almost any landscape as a small, homey and cheerful residence. Being influenced by the English type it does not take on the characteristic squareness of the rooms, which are undesirable. One will notice in glancing over the floor plan that all the rooms are large and airy. The bath room which can be most embarrassing at times.



There is a convenient linen closet in the hall as well as a sufficient amount of cupboards in the kitchen, all of which are conveniently arranged.

The fireplace located in the end of the living room and away from the dining room adds a certain warmth to the whole home that, without a doubt, cannot be obtained any other way. It not only enhances the interior, but adds greatly to the beauty of the exterior as well.

The dining room is very conveniently arranged at the front of the house with an archway leading from the living room, which may be closed off with French doors if desired. A buffet recess is also provided on the outside wall with windows above.

One bedroom has been provided for on the first floor and one (12x14) bedroom on the second floor. Both are provided with cross ventilation, which is an excellent feature.

The breakfast nook off the kitchen is very convenient and of ample size for built in breakfast set or the English breakfast table and chairs, which ever are desired.

The grade entrance has been used which is a space saver when there is a stairs to the second floor.

Two sets of blueprints of this plan will be furnished at nominal cost on application to

SPAULDING LOGGING Co.

SALEM, OREGON.

TELEPHONE 1830

FARM PLAN SERVICE NEARS COMPLETION

West Coast Lumber Bureau To Give Free Drawings of Farm Buildings

SEATTLE, WASH.—Realizing that west coast woods are being used to an increasing extent for agricultural purposes, the directors of the West Coast Lumber Bureau, early in the spring, decided upon the policy of assisting farmers in their building problems.

The plan to be followed was to prepare a number of booklets on the more important buildings, bringing to the attention of the farmer the latest and the most convenient plans and the best possible building practices.

The second feature in connection with the free plan service will be to draw out complete plans of farm buildings, together with specifications and bills of material, so that the farmer can readily get cost data from his lumber dealer concerning the proposed building to be erected, after which plans will make it easy for him to build the most approved building with the least amount of effort.

Professor W. J. Gilmore, agricultural engineer of the Oregon Agricultural College and Professor L. J. Smith, agricultural engineer of the Washington State college, were engaged early in the spring to write the booklets for the lumber bureau. Professor Gilmore has just completed a booklet on dairy barns and Professor Smith one on poultry houses and equipment. A booklet on hog houses will be ready for the press early in the fall and one on conveniences for the farm and home will be ready for publication in the late winter.

It is hoped that this plan service will greatly assist the farmer in making the best possible use of West Coast woods.

If the political writers keep up their speculations much longer they will run out of politicians to mention as presidential possibilities next year.

The principal thing we blame the flapper for is setting such an example in dress and make-up for mother and grandm.

Brake Service Increase Result of Safety Moves

The increasing number of brake service stations, brake specialists, would indicate that the safety campaigns and educational drives by the national organizations are bearing fruit. The increasing traffic congestion also has helped educate the car owner of the vital importance of good brakes.

If, then, the car owners are partially educated to the need of good brakes are already partly sold, and the brake specialists are making money, why cannot the car dealer make a brake department a profitable service?

The adjustment and reeling of brakes has passed, the writer believes, from a mere service operation or repair to a merchandising proposition. In other words, the results must be sold, not merely brake lining and brake work. Brake repairs have been handled on a service basis, whereas, in this present day, brake work should be handled on a business and sales basis.

The car dealer has, as already previously pointed out in early articles, allowed this work to get away from him because too many dealers or their service stations have handled the work all in the day's business. The brake specialist plans differently.

ling, sizzling factory music by Gustaf Holst.

This is the program's explanation of the dance, and it is not an exaggeration of what is seen and heard:

"The great Ford plant, idle while changes are made, swings once more into action to produce the long-awaited new model. Huge dynamoes set the machinery moving, piston rods shoot up and down, gigantic hammers fall, forges spit fire and cranes waltz majestically high in the air. Giant iron hands deposit with automatic intelligence vital parts of the new motor car. Energy, heat, power, motion blend in a rhythmic unity which is the very essence of modern America."

SCENIC TRIP MADE IN CHRYSLER FIRST

North Carolina Official Drives To Quebec New International Route

According to advices received by the Fitzgerald-Sherwin Motor company, of officially opening the new international motor route from Asheville, N. C., to Quebec, fell to a Chrysler "70" roadster, which was driven by its owner, R. P. Horris, state automobile inspector of North Carolina, over this latest addition to America's scenic highways two weeks before the spectacular tour which has just been completed by a giant motorcade of 100 cars over the route.

Accompanied by Mrs. Harris and a mechanic, and bearing letters of greeting to Canadian officials from the governors of North Carolina, Virginia and Pennsylvania, and other influential citizens of the United States, Harris covered the 1509 miles between Asheville and Quebec in 41 hours and 25 minutes.

At the end of the drive he was welcomed at the Chateau Frontenac, in Quebec, by representatives of the provincial govern-

JUST PERFORMANCE NO LONGER ENOUGH

Every Car Manufacturer Now a Seeker After Beauty, Says Dealer

"It is no longer enough to manufacture motor cars that perform satisfactorily," says R. N. MacDonald of MacDonald Auto Co., local Chandler distributor.

"Perform they must, but they also have appearance. The elusive factor of beauty is being sought by every motor car manufacturer in America today. The public has taken for granted the work of the chassis engineer and

now demanding something more individuality and originality. It distinguishes the custom car is being asked for by the mobile buying public. Beauty, harmony of color, and ease of interior are receiving close scrutiny of practically prospective buyer."

their new 1928 line, Chandler achieved this magnificence, individuality, according to Mr. Donald. The bodies, interior and luxurious as well as appointments from the low special six series up, are all of the most expensive cars. Some care is taken in selecting proper color combinations to offset the smart body lines and interiors are patterned to match with the exterior beauty.

Forty-three distinct shades are as standard and optional colors on the 1928 Chandlers secure the different harmonizing effects, which make for individuality.

Woolhair, broadcloth, rich figured cloth, and car-colored leathers are used as upholstery, the material and color varying according to the type and finish of the body.

Refinements which add to the distinctiveness of the new Chandlers are circassian finished instrument board with all models, stately bronze finish hardware, electric clock and heater on the royal eight series; shaded reading lights, vanity case, smoking set, toggle grips and silk shades on the differ-



ent closed car models. The beautiful new tri-bar Chandler radiator and unique emblem are standard with all cars of the royal eight, big and special six Chandler series.

"Formerly only the rich could afford to have their individual tastes expressed in their cars. Today, the Chandler series, with 24 models and many color combinations, yet moderately priced, gives adequate expression to this desire and reflects the discriminating

tastes of a car designed by bod artisans to meet individual requirements." Mr. MacDonald states.

Automobile exports to Australia have increased 110% in the past five years.

More than 115 buses are being operated in Northern Indiana and Illinois by the Shore Line Motor Coach Company.

LUMBER POINTER



"The best way to point out a fact is to prove it. Buy of a dealer of proven reliability."

LUMBER and ALL BUILDING MATERIALS

Gabriel Powder & Supply Co. Office, Yard and Warehouse

610 North Capitol

Telephone 2248

The CHEVROLET for Economical Transportation

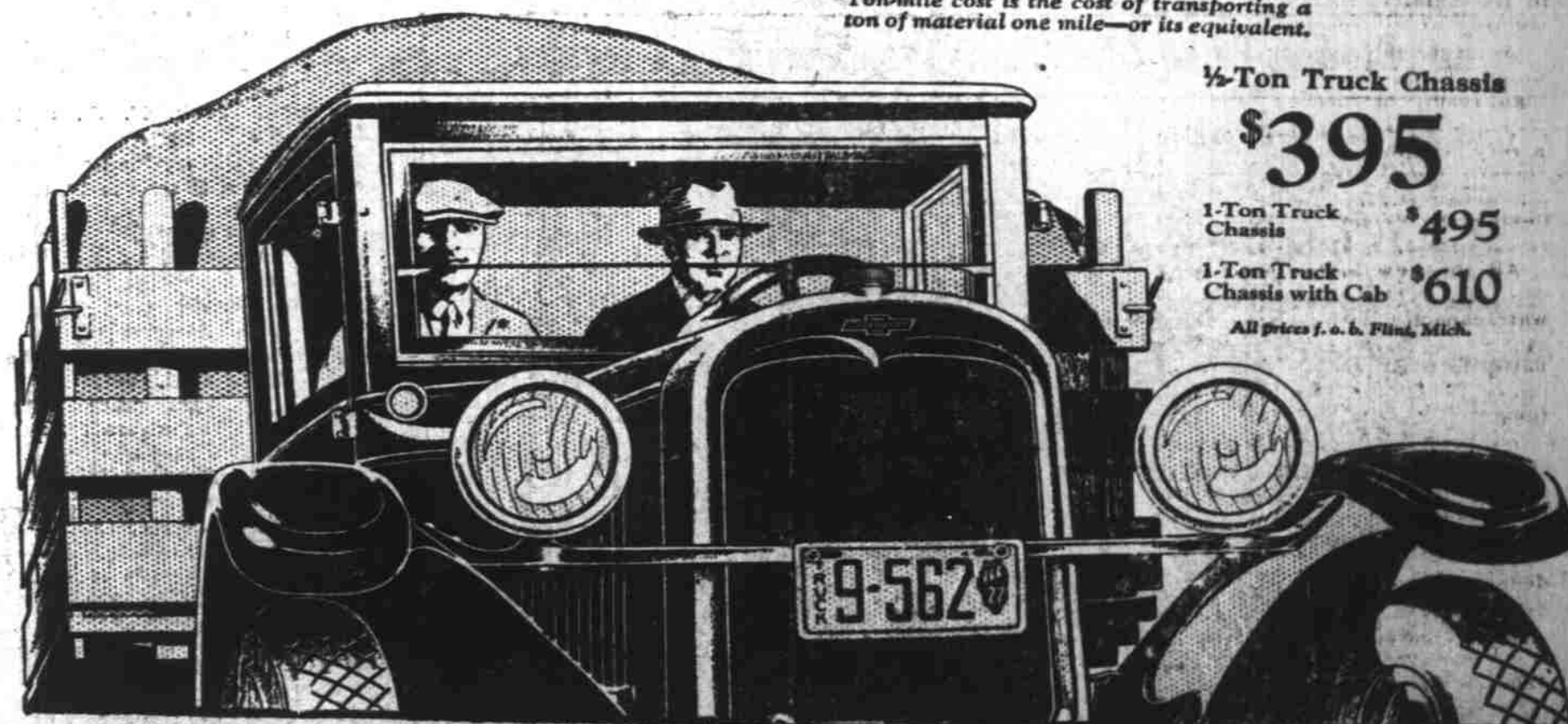
World's Lowest Ton-Mile Cost for every line of business

Whether you need a truck for fast delivery over city streets . . . whether your problem is the transportation of ton-loads over all types of highways . . . or whether you need a haulage unit for any sort of special purpose—we have a Chevrolet Truck, with a type of body to meet your particular needs, that will give you the world's lowest ton-mile cost*,

plus an amazing performance never equalled in a low-priced commercial car!

Here is a type of construction once undreamed-of in a truck at this price—ruggedness, strength and modern design which assure you the long-time, over-all operating efficiency that has made Chevrolet the world's most popular gear-shift truck!

*Ton-mile cost is the cost of transporting a ton of material one mile—or its equivalent.



1/2-Ton Truck Chassis

\$395

1-Ton Truck Chassis \$495

1-Ton Truck Chassis with Cab \$610

All prices f.o.b. Flint, Mich.

Douglas McKay Chevrolet Co. Temporary Address, 487 Center Street, Tel. 745

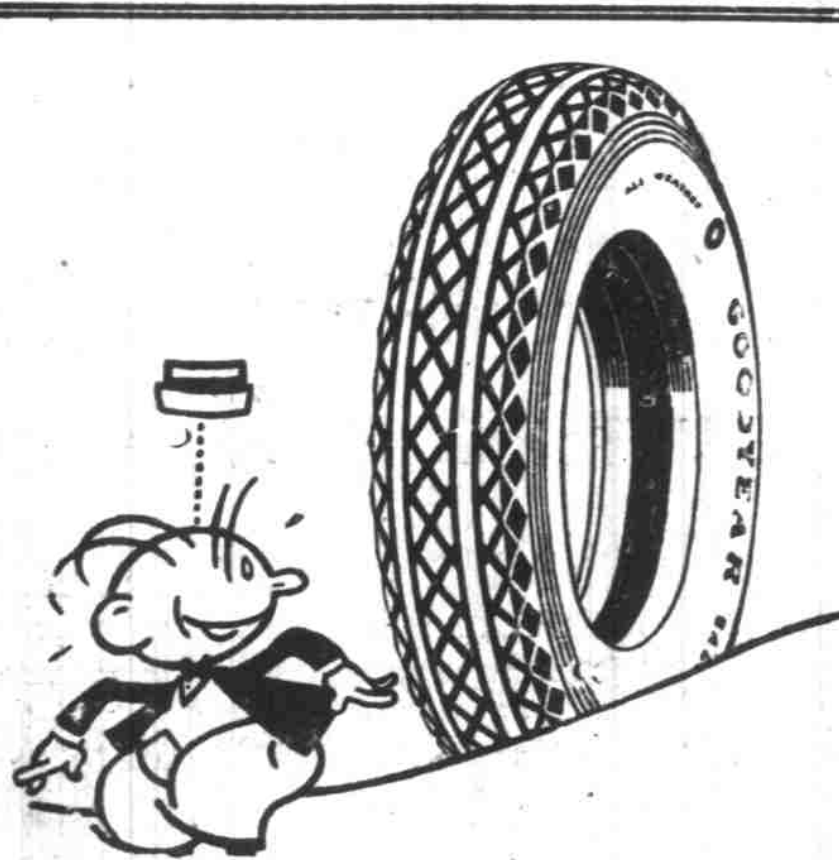
Associate Dealers:

DALLAS CHEVROLET CO., DALLAS

HALLADAY'S GARAGE, MONMOUTH

BALL BROS., TURNER

THE WORLD'S LARGEST BUILDER OF GEAR-SHIFT TRUCKS



SLIPPERY STREETS!

Slippery streets require careful driving and dependable tires. Goodyears, with the big, diamond blocked All-Weather Tread, are the safest equipment you can use. They wear long, too, and that's why—winter and summer—More people ride on Goodyear Tires than on any other kind.

- 30x3 1/2 AWT. Cord \$11.65
- 29x4.40 AWT. Balloon 12.35
- 32x4 AWT. Cord 19.35
- 31x5.25 AWT. Balloon 21.95

Our Goodyear Service of APPLICATION, INFLATION, and INSPECTION accompanies every sale. Bring your tire and tube problems to us for a money saving solution.

G. W. DAY

Phone 66

Com. & Chemeketa Sts.