

DODGE SR. COUPE INTRODUCED HERE

Now Model is Embodiment of Smartness and Comfort; Lines Striking

A Dodge Brothers Senior coupe for four passengers is introduced today by the Bonebrake Motor Co., local Dodge Brothers dealers. This fine six cylinder car is the third car to be incorporated in the company's new line of sixes and is the embodiment of outward smartness and inward comfort.

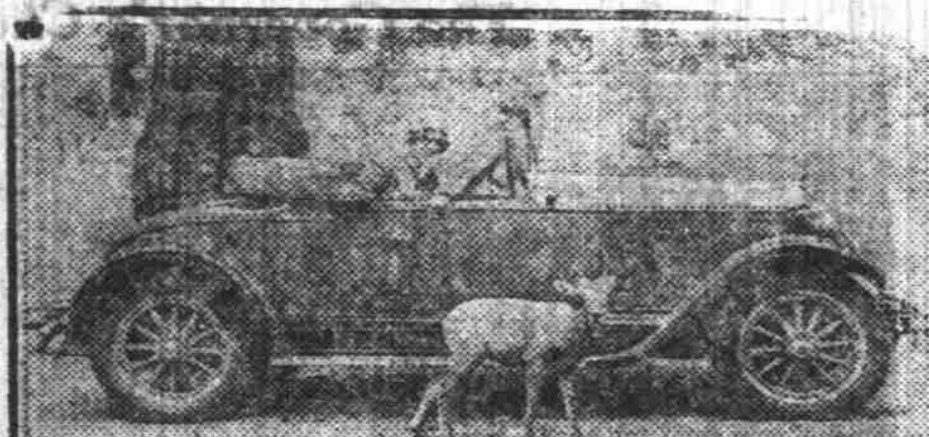
The same handling of horizontal lines that gives distinction to the company's Senior sedan and cabriolet roadster applies also to this coupe—long, sloping hood, unbroken striping from front to rear, long windows, deep body panels and low top structure with short, hood visor.

The extra length of the body gives an impression of the roominess for which the designers strived. With this as a basis, both luxury and riding ease were made simple. The driver's seat is unusually wide and the fourth passenger has practically the same leg room as the driver, still leaving generous room for the rear seat passengers behind the extra seat.

This coupe sets the same high performance standards as Dodge Brothers Senior sedan and cabriolet roadster—70 highest miles and thick felt pads between sills eration in traffic and reserve power that makes driving a pleasure.

Dodge Brothers have demonstrated in this car that they are fully abreast of the trend toward striking color effects in motor car bodies by providing an unusually wide variety from which to choose. These run the gamut from the conservative combinations for the business man to the ultra modern for milady's pleasure.

One of the most attractive bodies, in the opinion of the local dealers, is done in greens, striped with gold. Another combination that is most effective, is two striking blues striped with cream. With each body color com-

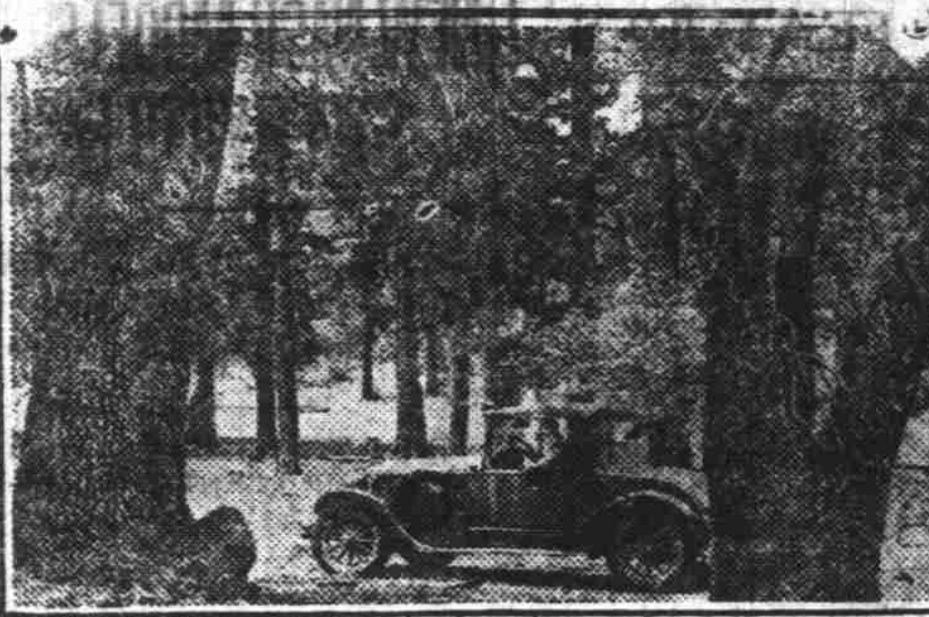


ination an appropriate shade of fine broadcloth is used to upholster the cushions and seat backs, making the decorative scheme harmonious through out.

The body construction is noteworthy, especially the sound deadening features, which include thick felt padding in door and body panels, beaded cushioning strips between fenders and body and thick felt pads between sills and frame.

All the colors of the rainbow are utilized in the exterior body finish of the different models of 1928 Chandler motor cars. Thirty-three distinct shades ranging from Fawn to Medenna Lake and from Tonaph Grey to Mountain Ridge Green are in use as standard body and decorative colors.

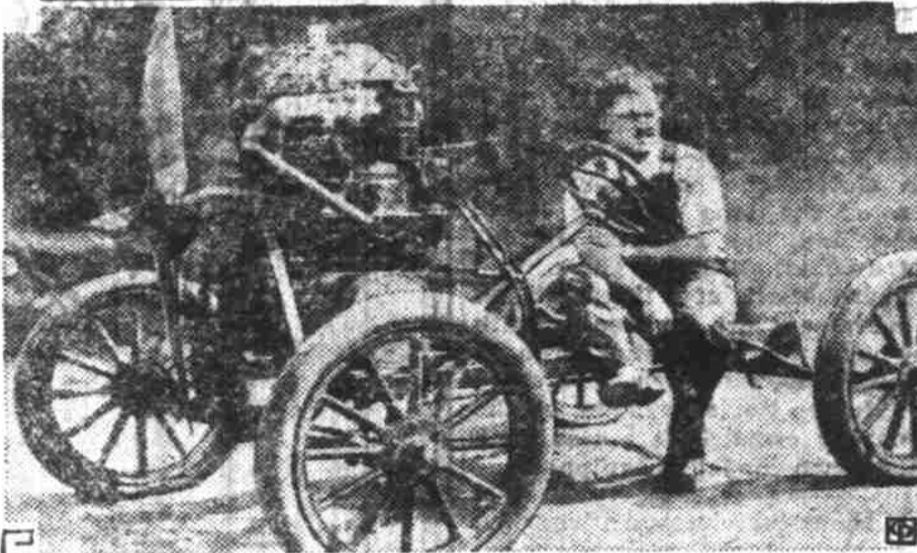
It is typical of America that the first reaction of many of us to the flood has been to say that there ought to be a law passed.—Nashville Banner.



Look What a Little Civilization Will Do

Nanny, a four-month-old mountain sheep, has been changed from one of the wildest to the tamest creatures in the State. When she was about a month old she was picked up by the cowboys of the Heart-Bar Ranch and raised on a bottle until she has become so tame that she follows Mrs. A. R. Swarthout around like a puppy. Upper left—Nanny standing beside the Pontiac Six roadster. Upper right—in the San Bernardino Mountains near Big Meadows. Lower—Mrs. Swarthout demonstrates how she raised Nanny and Nanny seems to enjoy it too. This view was taken in Barton's Flats, San Bernardino Mountains.

AIRPLANE MOTOR SPEEDS "AUTO"



Residents of Lincoln, Neb., have paused on the streets, recently, to stare at this strange craft. It is an automobile chassis, propelled by an airplane motor, which develops unusual speed. Its owner, above, Joseph Baird, a medical student at the University of Nebraska, plans to equip the "thing" with runners for winter use. He intends to use it in going to and from his classes as well as for pleasure trips.

Chandler Used in Winning 220 Mile Road Race, Chile

The winning of the 220 mile South American race from Santiago to Panimavida, Chile, recently, by a Chandler Six demonstrated the remarkable performance qualities of the Chandler power plant," says R. N. MacDonaid, local Chandler distributor. Word has just been received at the factory of the details of the run.

The race, organized by "El Diario Ilustrado" of Chile, was under the direct charge of the Santiago Automobile Club and covered the distance from the Chilean capital to Panimavida through rugged territory.

Carlos Fache, driving a Chandler Six, made the run in five hours and thirty-five minutes. The second car to cross the finish line came in twelve minutes later.

While this may not seem re-

markable to the casual reader it should be noted that the entire length of the route is in extremely poor condition, making the drive dangerous for even ordinary travel, not to mention racing. Deep ruts, sharp curves and steep hills slowed down the drivers. Rivers and streams crossing the route had to be forded as there were no bridges. Despite these difficulties Fache kept his Chandler at an even speed without straining the motor. Three cars were unable to complete the distance due to strenuous conditions encountered.

Speed Limits Increased Without Adding to Hazard

The development of the safety factor in the modern motor car has gradually caused the speed limits in the various states to be increased without increasing the safety hazard, points out the Oregon state motor association. A checkup of recent legislation in twenty-five states shows that the increase in maximum speed allowed in open country have been made as follows: Idaho, from 30 to 35 miles per

hour; Indiana, 35 to 40 miles per hour; New Hampshire, from 35 to 40 miles per hour; North Carolina, from 35 to 45 miles per hour; North Dakota, from 30 to 35 miles per hour; Oregon, from 30 to 35 miles per hour; Washington, from 20 to 40 miles per hour. Oklahoma's change, however, has been held unconstitutional by the state supreme court because of a defective title and the legal limit has been restored to 35 miles per hour, as in the old law.

Read the Classified Ads

COMING SOON ALL NIGHT SERVICE

Tires, Tire Repairing, Gasoline, Oil, Power Greasing and Car Washing

AT OUR NEW HOME

"JIM" "BILL" SMITH & WATKINS

S. W. Corner Center and Liberty Sts.

Phone 44



Photo by Kennell-Ellis. JOE WILLIAMS

JOE WILLIAMS "The Battery Man"

See him today—He'll save you money and give you service that satisfies

Corner Center & High Telephone 198





American Standards of Performance and Style - At All-American Prices

You've probably heard how this big new Six was created by American engineers to meet modern American motoring needs—how it introduced a big new engine, a new and longer chassis and many original features of design.

You've probably watched it on the street and admired the American beauty revealed in its masterly lines and new bodies by Fisher.

But why not consider just for a minute, the really impressive fact? The fact that the Oakland All-American

Six is offered at All-American prices—at prices which make its luxury no luxury at all.

Value, they say, is what you get for what you pay. And here is the most in a motor car that an equal amount of money ever bought.

Size, speed, smoothness—staunchness that welcomes the roughest roads. Comfort, luxury, distinction—advanced features through and through. Just the kind of a car you wanted at a price you've wanted to pay! Come in for a demonstration of this

new American car! Learn for yourself why the All-American Six is winning all America in such a spectacular way.

NEW LOW PRICES

2-DOOR SEDAN \$1045

Landau Coupe	\$1045	Cabriolet	\$1145
Spout Roadster	\$1075	4-Door Sedan	\$1145
Landau Sedan	\$1265		

Pontiac Six, reduced price, \$745 to \$925. All prices at factory. Delivered prices include minimum handling charges. Easy to pay on the Liberal General Motors Time Payment Plan.

PRODUCT OF GENERAL MOTORS

VICK BROS.

Associate Dealers: Miller Motor Co., Albany, Oregon; Fred T. Bilyeu, Seio, Oregon; E. E. Taylor, Lebanon, Oregon; Silverton Motor Car Co., Silverton, Oregon; Geo. Borr, Woodburn, Oregon; C. J. Shreve & Son, Dallas, Oregon; Harrisburg Garage, Harrisburg, Oregon; Johnson Motor Sales Co., Corvallis.

OAKLAND ALL-AMERICAN SIX

for Economical Transportation

CHEVROLET



Only Chevrolet offers Bodies by Fisher at such low prices

The bodies that Fisher has built for today's enclosed Chevrolets are comparable, in every respect, to the coachwork of the world's finest automobiles!

No other car in the low price field offers bodies by Fisher, with all the comfort, charm and elegance that the Fisher name assures.

Come in—and make your own inspection of Chevrolet coachwork. Note the smartness of its Duco colors... the grace of its full-crown, one-piece fenders... deep, restful seats... the fashionable durable upholstery... the finely modeled Ternerstedt hardware... the patented Fisher VV windshield... and the complete modern appointments. Go for a drive—and you will learn that Chevrolet's performance is, in every way, as amazing as its outstanding beauty!

Here is quality you never thought possible except in cars costing hundreds of dollars more—
—quality that definitely establishes Chevrolet as the world's finest low-priced car!

Douglas McKay Chevrolet Co.

Temporary Address, 480 Center Street

Associate Dealers:

DALLAS CHEVROLET CO., DALLAS
BALL BROS., TURNER

HALLADAY'S GARAGE, MONMOUTH

QUALITY AT LOW COST