

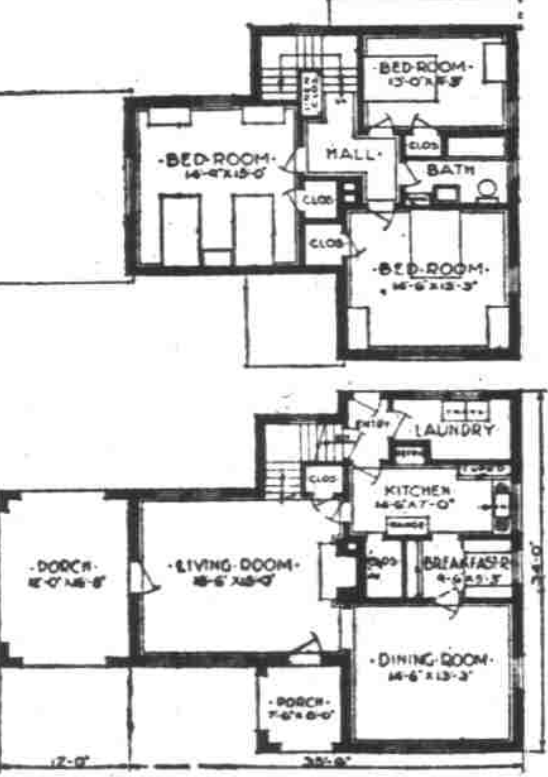
English Influence but Royal American Comfort



THE KISHOWANA—DESIGN A741

Occasionally it happens that the better the lines, from the viewpoint of the architect, the more costly the construction and the less uniform the walls of the rooms of the home.

arranged to the best advantage to make the most of their exceptional size and exposures. In few houses will more cheerfulness be found or better interior designing.



The Common Brick Manufacturers' Association, Cleveland Ohio, can furnish complete drawings for this design.

manently is one of the lessons which the American public has yet to learn.

Churches

Rev. W. C. Kanner will hold services in the Hickory Community church at 11 a. m. Sunday school at 10 a. m. Mrs. S. J. Lowry, superintendent. A cordial invitation to all.

Immanuel Baptist Services will be held at the Y. M. C. A. building on Court St. Sunday, May 29, 10 a. m. and 7:30 p. m. Rev. J. C. Tibbitts will preach and at 8 o'clock Brother C. D. Saucy, Mid-week service will be held at the home of J. C. Tibbitts, 190 S. 14th St.

WILLIYS GREAT SIX SALES INCREASING

Market Reports Indicate 3rd Place Standing in Class Over \$2,000

TOLEDO.—(Special)—Following a statement made today by John N. Willlys, president, that production of the Willlys-Knight Great Six, since its introduction a little over two years ago, had put it in third place among all cars selling at above \$2000, price reductions on this model were announced here today by Willlys-Overland, Inc.

would mean a terrific concussion that would throw the car in the air, and give everything, the driver included, a tremendous jolt. The same principle operates from every angle. A slight weakness in the threading of a screw that might never appear in ten years of ordinary use, will be searched out in one hour of high speed.

CARELESS PARKING LOSES MUCH SPACE

Angle System Most Efficient According to National Association

WASHINGTON, D. C.—(Special)—Motorists may not be able to solve the parking problem that confronts them in every city in the country, but they can do much to render the situation less acute by cooperating with one another to conserve to the utmost the space that is available on the streets for their cars.

ever, if the individual drivers leave an excessive amount of space between their cars and the ones next to them. "Fourteen inches is more than an adequate space between machines so parked. Yet, one sees motorists taking two feet, three feet or even more. The aggregate result is a tremendous waste of vitally needed space.

WHIPPETS BOUGHT FOR GOVERNMENT

RACING PROMOTES AUTO IMPROVEMENT

TOLEDO, O.—(Special)—With this city established as main headquarters of the government agricultural department in its war against the corn borer, important steps already have been taken by officials in charge to halt the steady westward march of this pest. In this war against the corn borer, the automobile is playing a prominent role.

WILLYS TO SPEAK ABOUT HIGHWAYS

Famous Dirt Track Driver And Aviator Relates Benefits of the Game

WASHINGTON, D. C.—(Special)—Whether the racing game has helped to popularize the motor car to any appreciable extent may be doubted. The motor car has never needed anything to popularize it except its own progress toward perfection year after year.

SCREENS

Have your windows and doors measured for our extra tight-fitting screens NOW—before the flies come in.

Advertisement for insurance and window screens, featuring the text 'INSURANCE OF EVERY KIND' and 'Becke & Hendricks'.

Well Made Screen Doors

Advertisement for well-made screen doors, featuring the text 'Well Made Screen Doors' and 'Chas. Spaulding Logging Co.'.

First Congregational Church

Center and Liberty. REV. CHARLES E. WARD

THE CHURCH WITH A HEART

10 A. M.—Sunday School 11 A. M.—The Basis Of Hope 8 P. M.—The Good Samaritan (in moving pictures)