

PLANS COMPLETED FOR FOUNDER'S DAY

Road to Champeog Improved to Accommodate Many Visitors This Year

CHAMPEOG, April 19.—(Special.)—The first hole ever dug for the purpose of setting an electric light pole at Oregon's birthplace was placed by the Molalla Electric Light company, Wednesday, April 13, 1927. The place where local lighting began May 2, 1843, is to have the electric current turned on by Governor L. L. Patterson upon the occasion of the celebration of Founders' Day, May 7. Standing by the side of the governor will be Mrs. Samuel Elliott, of Hillsboro, 90 years old, and possibly the oldest living descendant of any of the 102 persons who participated in the proceedings of May 2, 1843, eighty-four years ago.

The May day celebration this year will mark an event in Oregon history. For the first time there will be a good road passable 12 months in the year and it is announcing evening services it will no longer be necessary to say that they will begin at "early candle lighting."

The members of the Marion county court consisting of County Judge J. T. Hunt and Commissioners Smith and Porter made an inspection of the road Wednesday that leads into Champeog Park. With the members to the court were W. J. Jamer, county road master and Jamer Cook, county supervisor for this district.

They were met by the mayor who complimented them upon the good work done and the fact that they had left a monument to themselves. He told them that hundreds of visitors who in days gone by had visited the spot, highly praised them for giving to Champeog a road that is passable every day of the year except in the time of high water.

Up to April 12th this year there have been 692 cars into Champeog park. On Friday of last week a class from Pacific University, Forest Grove, spent the afternoon there. On Saturday forty-two students from Linfield college, McMinnville, passed the entire day studying history of the Oregon country.

On Monday George A. Warren, a member of the board of trustees of Pacific university, visited the place with his family. The road is in fine condition, and as the river has receded, the park looks inviting. During the week past the following Marion county people registered:

Salem—County Commissioner James E. Smith, Mr. and Mrs. O. H. Goff, Charles Harris, F. J. McFarlane, George W. Speed, Mrs. Rhoda Lovett, P. Marshall, Mrs. E. M. Shepherd, E. M. Shepherd, Mrs. George W. Speed. Stayton—Mrs. D. Lindholm, Joseph Campbell. Woodburn—Felga Worn Dahl, St. Paul—James Cook.

Mr. Used Car Buyer: Have you seen the real buys at the Capitol Motors Incorporated? See Bliddy Bishop, 356 N. High St. Tele. phone 2125 and 2126.

Chas. K. Spaulding Logging Co., lumber and building materials. The best costs no more than inferior grades. Go to the big Salem factory and save money.

PARTY TO BE DRY, SAYS CHICAGO MAN

Democrats Will Not Favor Amendment Repeal Despite Smith's Views

Governor Al. Smith, of New York, will be a strong contender for the democratic presidential nomination in 1928, believes Oliver Stewart, prominent politician from the Chicago district in Illinois who left Salem yesterday morning, after delivering an address here on the prohibition question.

The governor will probably get the support of delegations from Massachusetts, New York, New Jersey, Pennsylvania, and Rhode Island, and other New England states. There will be no other man capable of wresting the nomination from Smith the way it looks now, said Mr. Stewart.

If Smith is nominated, it is unlikely that democratic leaders will permit the party to go on record as favoring repeal of the prohibition amendment, no matter how much the Governor continues the issue now, continued Mr. Stewart. The future welfare of the party will be at stake and old party leaders will insist upon caution.

Confidence will probably go after the Republican nomination if he can secure it without too great a fight, said Mr. Stewart, but if bitter opposition arises, he will withdraw. The president could probably get the nomination in any case if he wanted it.

Mr. Stewart has travelled all over the United States during the past year, speaking in favor of prohibition. He points out that

New York and Philadelphia are the greatest violators of the prohibition laws. This is because of the large, diverse population, and the facilities for smuggling along the coast line. Boston is another weak center, he said.

Fry's Drug Store, 280 N. Com'l, the pioneer store. Everything for everybody, in the drug supply line, with standard goods and quality service always.

Ira W. Jorgensen, 190 S. High St. Parts for all makes of cars. Best equipped auto accessory store in this section. Prompt and reliable service the rule.

Second Harry Lauder With W. U. Glee Club

Joe Nee Recognized as Vocal Artist; Quartet Popular

Joe Nee, hailed by people all over the northwest who have heard him sing as a second Harry Lauder, will be one of the featured artists to appear with the Willamette university glee club in the annual home concert at the Capitol theater, Thursday evening.

Nee has been with the club three years and each year has gained in popularity with his unusual interpretation of Scotch songs. When the club toured Southern Oregon recently a number of people there who had heard Harry Lauder said they found a great resemblance between the singing of Nee and that of the noted Scotchman.

Other attractions are the Glee club quartet which has been meeting with great favor among service clubs in the city during noon luncheons, and a duo composed of Willis Hathaway and Ronald Craven, which sings negro spirituals. Twenty-five voices will make up the chorus giving classical and popular numbers. Readings and stunts will add to the entertainment.

The club is under direction of Professor E. W. Hobson, Dean of the school of music.

Henry O. Miller, 194 S. Com'l St., where most people prefer to get their auto parts for all makes of cars. Trade here and make savings on all auto parts.

Nash leads the world in motor car values. Beautiful display of new models at the E. W. Pettyjohn Company, 365 North Commercial St.

W. U. Women's Glee Club to Leave on Concert Tour

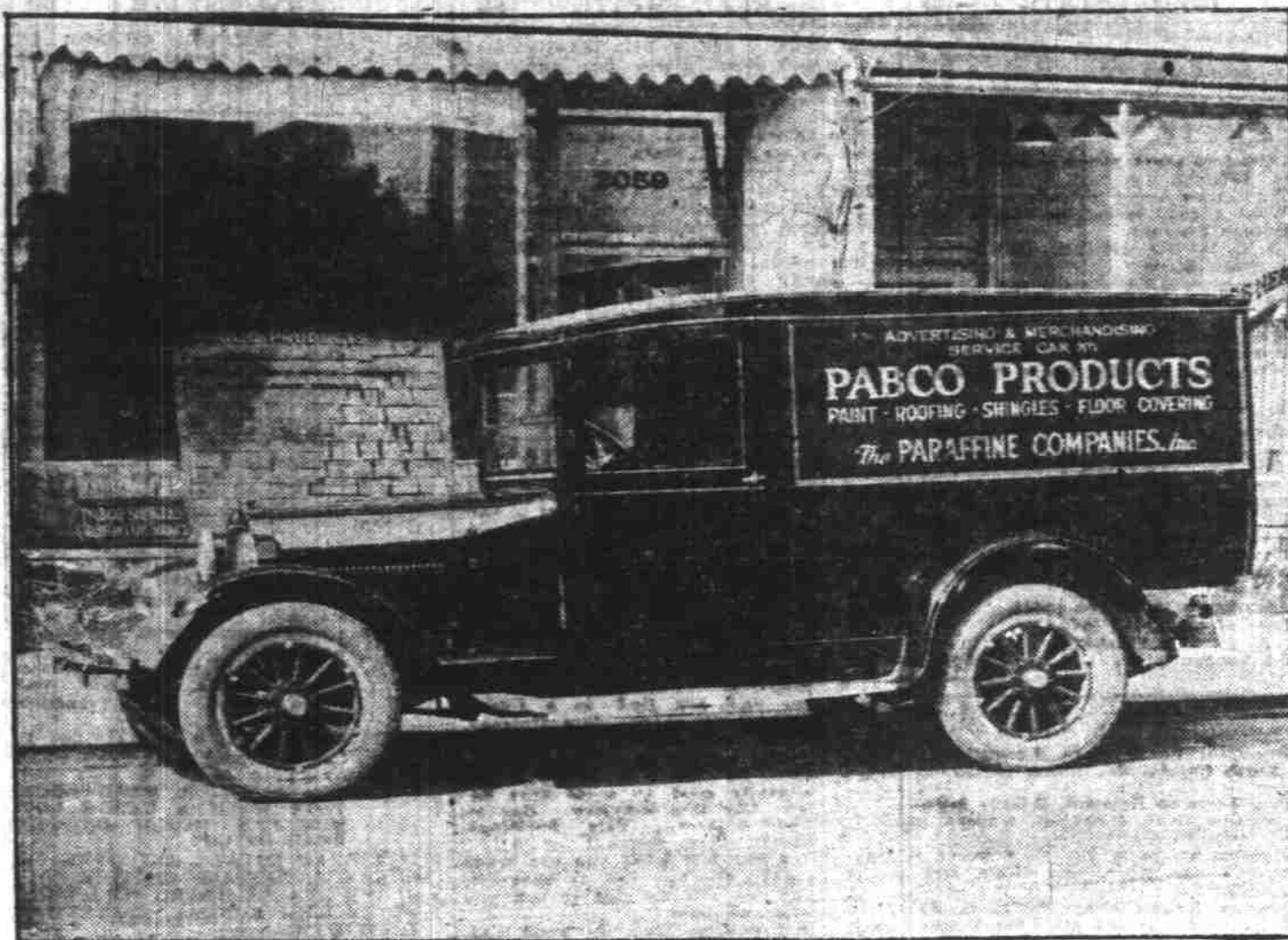
After an apparently hopeless start in lining up concerts for a tour this year, Willamette university's women's glee club has finally arranged an itinerary which will take the group as far as Arlington, Oregon. Concerts will be given at Hood River, Vancouver, Oundee, Camas, and Arlington.

The girls will leave Friday for Vancouver where the first performance will be given. They will return to the campus April 27th. Margaret Arnold is manager of the club.

The Hamilton Beach electric cleaners and Monarch electric ranges both recommended by Good Housekeeping. Sold in Salem by C. S. Hamilton Furniture Co.

Elker Auto Co., Ferry at Liberty St. Autos stored and bought and sold. Cars washed day and night. Low prices and service will make long friends.

Pabco Products Traveling Display Arrives



Manufacturer Uses Unique Method in Bringing Message to People

The arrival here Monday of The Paraffine Company's Inc. service car containing the Pabco shingle display to be shown here all week at the special display store, 142 South High street, revealed a new departure by a manufacturer of roofing products, in assisting dealers to educate the public in the possibilities of enhancing the value of their homes.

The display car was accompanied by experts of color and shingle designs, who will explain in detail every feature of the new Pabco Polochrome Shingles to the residents of this community during the display. "Many progressive steps on prepared shingles have originated with this company," said Mr. S. D. Kellner, District Manager of the

Paraffine Companies, Inc., who arrived here today "and one of the most effective ways we have found, of demonstrating to home owners the value of this type of shingle is to actually bring the various types of colors of shingles mounted on display boards to each city in display cars, especially designed to carry them."

PIED PIPER THEME FOR MAY FESTIVAL

Dancers Chosen for Willamette's Annual Event; Practice Starting

The May dances, which have been a traditional event of the annual Willamette university may festival, will follow the theme of Pied Piper of Hamelin, this year, according to Miss Anne Zimmerman, who is in charge. Margaret Lewis has been selected to handle the musical program, while Margaret Boone will look after the settings and costumes. The names of the dances along with that of the leader and those who will take part in the program are:

Mouse Dance Directed by Melva Spence. Helen Bridgeman, Francis McGlyra, Margaret Hogg, Mildred Cook, Helen Parks, Myrtle Sellinz, Joyce Kidder, Clara Hershberger, Yvonne Cornell, Dorothy Taylor and Doris Nye.

Wave Dance Directed by Virginia Merle Crites. Mary Clanfield, Elva Balsiger, Hazel Shutt, Lucile Wonderly, Georgia Fairbanks, Irene Gaines, Bonnie Zeller.

Council Men Dance Directed by Phoebe Smith. Palma Campbell, Wilma Spence.

Florence Emmons, Iva McLaughlin. Children Directed by Evangeline Heinek. Marjorie Miller, Virginia Edwards, Florence Power, Margaret Pro. Mary Kightlinger, Carolyn Lambirth, Mary Elizabeth Randolph, Bernice Mulvey.

Pygones Directed by Helen Sande. Doris Klindt, Beulah Wampler, Irene Ritchie, Elizabeth Corskie, Esther Lisle, Dorothy Hutchason, Doris Phoenixie, Mildred DeBord.

Balloon Dance Directed by Louise Findley. Margaret Townsend, Rosella Bunch, Rose Huston, Elsie Tucker, Ruby Lu Davis, Elvira Young.

Flower Dance Directed by Beulah Launer. Edna Ellis, Anne Lanke, Evelyn Price, Beulah Launer, Evelyn Hartung, Edna Thompson, Helen Kafoury, Gaynelle Beckett.

May Pole Dance Directed by Grace White. Lois Morris, Victor Rhodes, Camilla Gates, Harold Hauk, Mary Lou Aiken, Eldred Cobb, Dorothy Ferrier, Frank Van Dyke, Louise Garrison, Hugh Currin, Elma White, Floyd Emmons, Florence Miller, Clarence Emmons, June Mack, Raymond Yarnes, Harold Tomlinson, Newton Saunders, Carleton Gaines, and Egbert Thompson.

The dates of the May festival this year are May 6 and 7. Medford banks show deposits of \$5,557,448 cash and \$1,662,419 sight exchange.

NEW CORPORATIONS

Eastman Brothers, with capital stock of \$75,000, filed articles in the state corporation department here. The incorporators are L. C. Eastman, A. R. Eastman and M. G. Gunderson. Headquarters are in Portland. Other articles filed follow:

National Radio association of Portland, \$5,000; J. F. Nute, C. Wiley and C. S. Yates. Moeller and Bradley, Portland, \$3600; T. H. Moeller, Gelece Moeller and C. A. Bradley.

Hammond-Tillamook Lumber company, Delaware corporation, \$5,000,000; permit granted to operate in Oregon.

Roseburg Investment company, Roseburg; capital stock increased from \$30,000 to \$250,000.

Acclimated ornamental nursery stock, evergreens, rose bushes, fruit and shade trees at Percy Bros. in season. We have our own nurseries. 178 S. Com'l.

New sweaters. A large shipment just in. New patterns, new shades in the popular pull-over and coat styles. Emmons, Tailor-Furnisher, 426 State St.

WATCHES, CLOCKS AND JEWELRY Carefully Repaired and Guaranteed at PRESCOTT'S 291 N. Commercial St., Salem

PRESBYTERIANS TO MEET FRIDAY

WILL HEAR J. J. ROSS OF PORTLAND AT LOCAL YMCA

Denomination's Plan for Pensioning Meeting With Success, Report

Presbyterians of Salem, McMinnville, Gervais, Aurora, Woodburn, Dallas, Independence, Meham and Mill City will gather at the Salem YMCA on Friday evening of this week, at 6 o'clock, to hear J. J. Ross, one of Portland's foremost citizens and a leading member of the Presbyterian church. Mr. Ross will speak on the "Value of the Proposed Presbyterian Pension Plan to the Church."

Since last September the Presbyterians of the United States have been busily engaged in raising a \$15,000,000 pension fund to care for retired and disabled ministers and missionaries. The eastern part of the country has secured \$10,000,000 in subscriptions and the 14 western states are now engaged in an effort to secure the balance.

The final report of the campaign will be made on May 28, at the general assembly in San Francisco and the leaders of the denomination feel hopeful that the entire amount will be subscribed, thus enabling the plan to be put into operation at once.

Will H. Hays, the movie czar, has been serving as chairman of the laymen's committee for the

CHILDREN CRY FOR "CASTORIA"

Especially Prepared for Infants and Children of All Ages

Mother! Fletcher's Castoria has been in use for over 30 years to relieve babies and children of Constipation, Flatulency, Wind Colic and Diarrhea; allaying Feverishness arising therefrom, and, by regulating the Stomach and Bowels, aids the assimilation of Food; giving natural sleep without opiates.

The genuine bears signature of

Chas. H. Fletcher

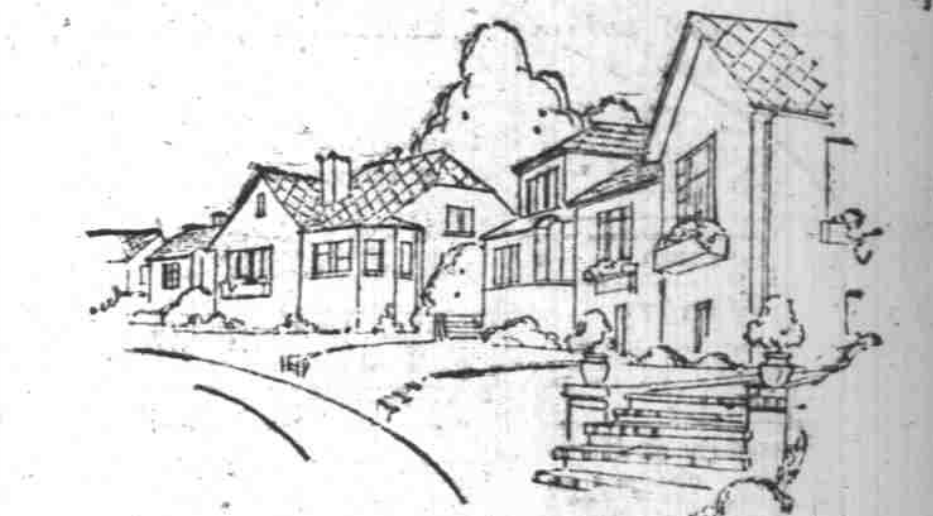
past three years and will be expected to make the report at San Francisco.

It is expected there will be 75 delegates at the meeting here Friday evening. Members of the executive committee for Willamette Presbytery are: Dr. A. E. Caswall, Ph. D., Eugene, chairman; Rev. J. C. Tomperton, Dr. George L. Hurley, Austin E. Dodds and Newton Anderson, all of Eugene, with R. De Joh, Corvallis; C. C. Bryant, Albany; and C. A. Kells, Salem, completing the committee.

The quota for this presbytery is \$25,000, payable over a period of five years.

Our Ads Business Getters

[For your roof protection... Insist on PABCO SHINGLES]



Is your street proud of your roof?

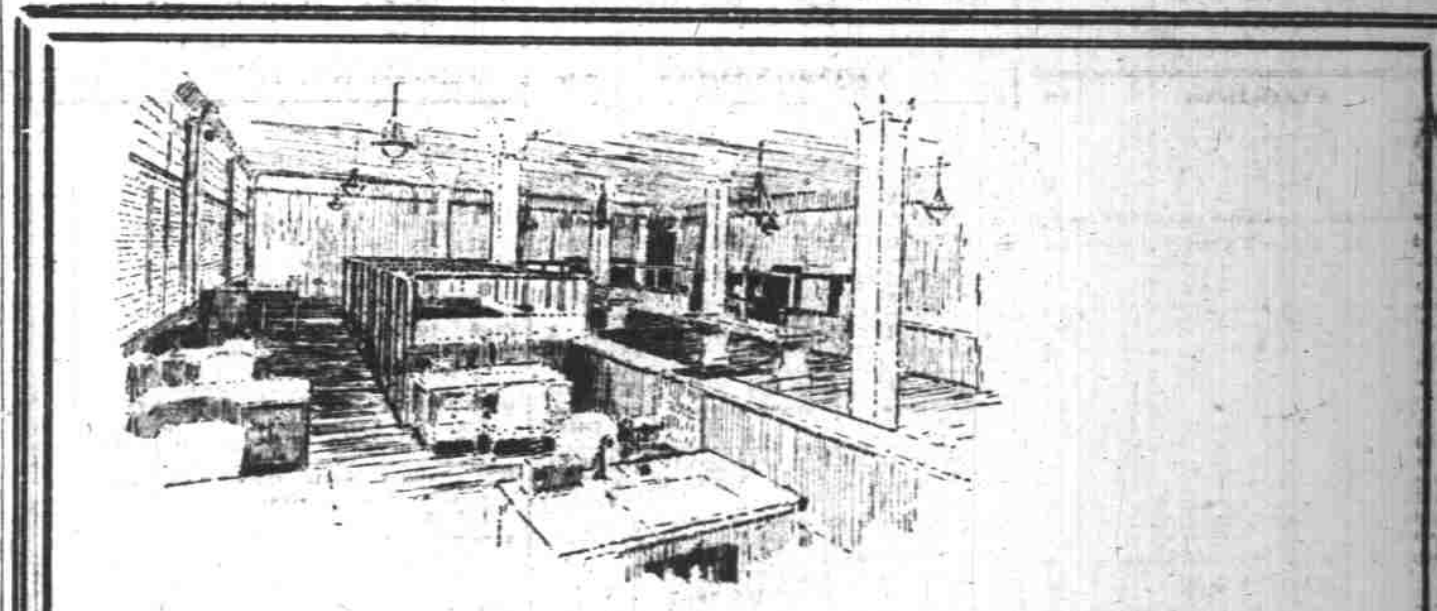
There was a time when a roof was a roof... and could be nothing else. Now it's different... you have a wide choice of shingle designs... a wide selection of rich colors. You can have a roof of one solid hue... or a beautiful blending of the eight Pabco "color-tone" shades in a variety of combinations.

There are PABCO SHINGLES for every sloping surface roof... styles that can be laid right over your old roof, if you wish. You will be surprised how economically you can have a roof that your street will point to with pride!

A Pabco Roof may be purchased on a convenient deferred payment plan, if desired.

Chas. K. Spaulding Company Front and Ferry Streets

Visit Pabco Shingle Display, 142 South High Street ALL THIS WEEK!



To the Man Who Is Ambitious

for a larger plan and measure of success, this bank offers the inspiration and ample facilities, plus financial and business counsel essential to those who see their future large.

The United States National Bank Salem, Oregon

ROSTEIN & GREENBAUM

BIG MILLINERY DEPARTMENT In Rear Room

After the Easter Rush you will find more pleasure in looking over the

Hundreds of Nice Hats

We Have on Display Beautiful Creations Priced from \$2.50 to \$5.00 None Higher

Childrens Hats Priced \$1.00 to \$2.50 Be Sure to See Them

Rayon Bloomers Special Good Value at \$1.75

RAYON VESTS special 85c

ORGANDIES AND VOILES New Shades

240 and 246 North Commercial Street

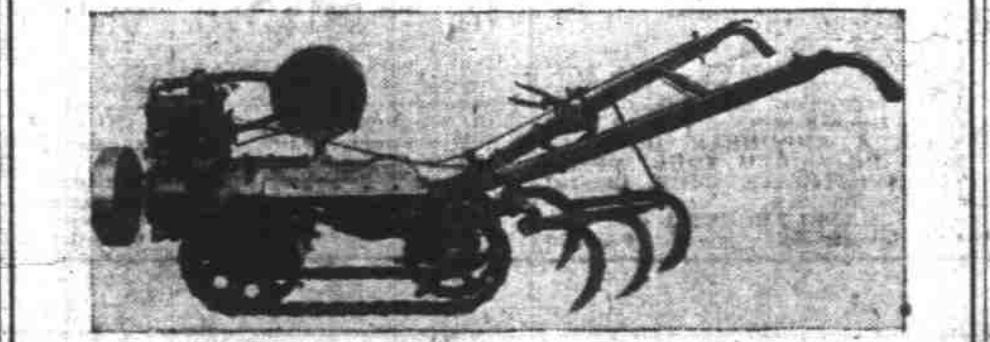
REAL ESTATE AND FURNITURE AUCTION SALE TODAY--1 p. m.

1785 Court Street

A lot of real good furniture, furniture of 8 rooms, 5 tube radio, walnut radio table, oak dining room table, 6 oak chairs, Hurley Superior electric washing machine, mahogany cabinet, victrola, bed springs and mattresses, dressers, rugs, Pacific Lange range with coils, many other things. Phone 75 for particulars.

H. F. WOODRY AUCTIONEERS 271 North Commercial Street Rite Down Town Agents for Lange Ranges

SAVE MONEY IN CULTIVATION



With the New Improved FLEX-TRED Garden Tractor

BESIDE cultivating, weeding, discing, harrowing and ground-packing at the lowest possible cost, the new "FLEX-TRED" will easily handle a nine inch plow. Plows to a full width of nine inches, and a depth of 6 1/2 or 7 inches. Gardeners and small land owners can now do their own plowing as well as cultivating at lower cost than ever. The flexible tread, power, and properly balanced weight make operation easy in all soils and under difficult conditions.

Adapted to attach any walking cultivator tools and combinations of tools used with the horse drawn type. Write today for free illustrated folder fully describing the new type K tractor, and proving the success that others are having with it.

VAUGHAN MOTOR WORKS 486 E. Main Street Portland, Oregon Makers of Famous Vaughan Drag Saws

Blanks: that are Legal

We carry in stock over 115 legal blanks suited to most any business transactions. We may have just the form you are looking for at a big saving as compared to made to order forms.

Some of the forms: Contract of Sale, Road Notice, Will forms, Assignment of Mortgage, Mortgage forms, Quit Claim Deeds, Abstract forms, Bill of Sale, Building Contract, Promissory Notes, Installment Notes, General Lease, Power of Attorney, Prune Books and Pads, Scale Receipts, Etc. These forms are carefully prepared for the courts and private use. Price on forms ranges from 4 cents to 16 cents apiece, and on note books from 25 to 50 cents.

PRINTED AND FOR SALE BY The Statesman Publishing Co. LEGAL BLANK HEADQUARTERS

At Business Office, Ground Floor