

SUNFLOWERS MAKE VERY FAIR SILAGE

But, Caution Given That Those Maturing Late Must Not Be Planted

Sunflowers make good silage for spring feeding of live stock, and for winter feeding of dairy cattle, and are especially good for sheep previous to and during the lambing season. This is an opinion advanced by a number of experienced farm crop professors. Sunflower silage is really appreciated when forage is short and more feed is needed in the winter months.

Sunflowers, however, are better adapted to dry land silage production than most of the commonly grown silage crops, although some have experienced difficulty with them. One trouble is that sunflowers that mature too late are planted. The best results are obtained with sunflowers that mature early so that they may be put into the silo when the seed has reached the good hard dough stage. At this stage the sunflowers are most nutritious and palatable. Experiments which have been carried out indicate that the addition of from 5 to 10 pounds of salt to a ton of sunflowers greatly improves the palatability and quality of the silage.

Several lots of early maturing sunflowers have been developed in the northwest and reasonable quantities of seed are available. It appears that the sunflowers should receive some attention for silage in the dry sections. There is no occasion, however, to grow sunflowers on irrigated lands where peas, oats and corn may be successfully produced for silage. In districts where crops have to be produced under dry land or frosty conditions, sunflowers offer great promise and have shown themselves capable of large production.

HAS MOST SILOS BUYS MOST SILOS

Chief Dairy State Makes Most Use of Convenience, to Make More Use

By A. L. HAECKER

Over a half million silos are now in use in the United States, but still we are only 20 per cent supplied. As the silo has proven an important factor in the economical production of stock and stock products, we should put it to larger use. Experiments and tests have proven that the silo will save 10 cents or more on the cost of producing a pound of butter; the dairy farmer who lacks a silo has a chance to save this 10 cent loss.

The American dairy farmer can compete successfully with his foreign competitor providing he uses good dairy cows and feeds them economically. We have the advantage of a cheaper and better supply of raw material, such as forage and grains; we have more fertile soil and a much cheaper method of tillage. We need not worry over competing with any country providing we use modern and economical methods, among which the silo certainly is one of the most important.

Dairying, Largest Branch of Agriculture, and we must see to it that it survives. We can not afford to surrender the field to competitors. Two and one-half billion dollars are paid for dairy products annually to producers in this country. The industry furnishes cash throughout the year; steady employment for old and young; utilizes the cheap, raw material of the farm, adds fertility to the land, and promotes frugal and industrious habits, all of which are beneficial to all our people.

A good many states have expressed the ambition to become prominent in dairy production. It is a commendable idea, but it cannot be accomplished without a thorough understanding of economic production. Wisconsin, the

greatest dairy state, discovered many years ago that the silo, legume hay and good dairy cows were all necessary in making a profitable dairy business. Today, Wisconsin has over 100,000 silos, and still they are the largest buyers of this important equipment.

Supreme Court Renders Opinion on Renting Cars

Operators of "drive-yourself" establishments are not under the jurisdiction of the public service commission according to a legal opinion prepared by the attorney general.

The opinion distinguishes between the business of transporting passengers for hire and that of renting out motor vehicles to persons who want to operate the vehicles themselves.

The opinion was requested by the public service commission.

SILAGE FED BEEF BRINGS \$1 A POUND

A Portion of This Beef Was Served to President and Mrs. Coolidge

That the very highest quality beef is made with silage in the ration is not generally known. Yet the grand champion beef carcass at the 1925 International Live Stock Exposition, which was sold for the world's record price of \$7 a pound, a portion being served to President and Mrs. Coolidge at the annual convention of the American Farm Bureau federation, was silage fed. His breeder and feeder, W. W. Wilson of Indiana, fed his pure bred Aberdeen-Angus steer a liberal allowance of silage in the ration, according to the information given out by him.

That the Wilson steer is not the exception to the general rule of practical beef cattle breeders and feeders is seen by a poll of all the prize winners at the 1925 International Exposition in beef carcass classes. Hall Orchards of Michigan, who had two prize winners; Judge S. C. Fullerton of Oklahoma, and C. L. Taggart of Pennsylvania, all fed silage in the rations of their prize winners to produce the highest quality of beef at the greatest show in the world. Mr. Taggart of Pennsylvania is a consistent winner in the carcass classes, having shown grand champions once or twice and always being in the money at the International for the past ten years or more.

County Court to Relocate Road, Condemn Property

Regardless of the protests against the proposed work to be done on the Rosedale-Fairview market road, the county court will relocate the road, condemning the necessary property at the established legal rates.

According to the court, certain property owners had been blocking improvement for a considerable length of time and the resulting move was the only method possible to proceed with.



Success Speaks for Itself

RESPONDING to the need of the many Californians who come north for my famous Rosal and Colon treatments, and to countless inquiries received from that section, offices have been opened in San Francisco, 702 Market Street, corner Geary. A highly skilled Chiropractor will be maintained there, as at Portland and Seattle. My remarkable "Cure of PILES CURED OR REFUND" will also be observed. This advertisement makes no mention of former patients to advise their California friends of the availability of my treatments. FEE \$100.00. Book on request.

DR. DEAN M.D. INC.
PORTLAND OFFICE: 501 W. Washington
SEATTLE OFFICE: 1000 4th Ave. S. E.
SAN FRANCISCO OFFICE: 702 Market St.

TAX COMMISSIONER ADVISES ASSESSORS

Letter Calls Attention to Some Inequality of Taxation; Urges Action

At the present time considerable inequality exists in the assessment of manufacturing and mercantile properties in Oregon according to a letter written by Earl Fisher, state tax commissioner, to the county assessors. He further advises the assessors how to proceed under the new taxation laws, which were passed at the 34th legislative session.

The letter was drafted after the state tax commission yesterday entered an order making the use of the so-called confidential questionnaire discretionary with the county assessors. Members of the tax commission held that the new law provided ample machinery for the levying of equitable property assessments, and that the questionnaire was not necessary for property assessment purposes.

Under a resolution adopted by the state tax commission information necessary for tax levying purposes shall be obtained by the county assessors in any manner they may desire, subject to the right of appeal of the taxpayer to the county board of equalization, and examination and test of the work by the state tax commission. "Information obtained by this office," read the tax commissioner's letter to the county assessors, "indicates that 80 taxpayers in Multnomah county with a reported book value of \$16,758,956 were assessed at \$1,846,165 or 11.02 per cent. These taxpayers had a net income of \$3,010,871 or 17.97 per cent on the book value. "Another group of 80 taxpayers with a book value of \$28,331,913 were assessed at \$13,197,388 or 46.58 per cent yet they showed net earnings of only \$2,736,880 or 9.66 per cent on the book value. "These figures are offered as an illustration of the injustice that has grown into the assessment of business property of a more or less invisible character and we trust the facilities afforded by the act of the recent legislature will enable the assessors to place the valuations of such properties upon a fair and equitable basis.

"By the terms of the resolution adopted by the state tax commission it will be observed that the commission is not prescribing the form of report which the assessor shall require of the taxpayer, but leaves it to the assessors of the respective counties. "The use of the confidential reports, heretofore supplied you, is left in your discretion. If you think the necessary information upon which to base intelligent assessments can be procured to better advantage by personal interview or inspection of the taxpayers books than by the use of special reports, that is a matter for you to determine in complying with the new act. "The state tax commission reserves the right, of course, to test the local assessments and make any revision in the assessed valuations that it deems proper and necessary in order to provide a more equitable apportionment of taxes, a state law prescribes."

NEW BOARD ELECTED FOR COSMOPOLITAN

Three Salem Men Among Directors; Plans for Organization Formed

With reestablished hope for the future of Cosmopolitan Stores, Inc., new directors and officers have been elected and plans for a highly efficient organization have been perfected following a stockholders meeting here this week.

Tight credit and heavy accounts have been attributed as the reason for the assignment of a few weeks ago, but the solvency of the firm is unquestioned, assets being nearly three times the liabilities.

The newly elected board includes three Salem men, Lloyd T. Reynolds, F. B. Thielens, and W. I. Staley; two from Portland, H. M. Roome and C. R. Ingram; J. O. Holt of Eugene, past president; and H. Steinfeld of McMinnville.

The discontinuation of the stores at Silverton and Independence may prove feasible in clearing up the business of the company, but as yet, no definite announcements have been made from the local offices.

Classified Ads Bring Results

Work Praises Hawaiian People for Independence

HONOLULU, April 6.—(AP)—Dr. Hubert Work, secretary of the interior, in an address today to the joint session of the legislature, praised the independent spirit of the people of Hawaii. A salute of nineteen guns was fired as the secretary entered the capitol.

Dr. Work is here for the Pan-Pacific conference on education, reclamation, rehabilitation and recreation, which will bring its sessions Monday.

McGilchrist Gives Talk on Trip Around World

Handicapped by the lack of time at the club luncheon Wednesday, William McGilchrist, Salem Rotarian, was able to give his fellow club members a glimpse of only the fore part of his around the world trip just recently completed.

McGilchrist was abroad nine months, visiting practically every point of interest in Europe, including his old home near Glasgow, Scotland. As he was forced to leave his listeners on the slopes of Switzerland as the 1 o'clock whistle announced, "it is finished," a motion was presented that the speaker be asked to continue his travelogue at a later date.

"Good Reasons"

Why I Should Buy Groceries at Damon's.

- First—Lower prices.
 - Second—Special sales most every day that make you an extra saving.
 - Third—The buying power of over a hundred stores.
 - Fourth—We guarantee entire satisfaction with every order or money refunded.
 - Fifth—The customer is not required to pay the rent, as we own our own building.
- LAST BUT NOT LEAST—You learn how to really economize. As an inducement for you to do your trading at our store today, we will sell:

Thursday - Friday - Saturday - Monday (FEATURE)

Coffee in cans (all brands)	45c
1 pound for	
New Dates	25c
2 pounds for	
Best Mountain Honey	45c
2 frames for	
Onion Sets	25c
3 pounds for	
35c size Oranges	25c
on sale	
College Inn Soups	25c
2 cans for	
College Inn Chop Suey	35c
45c size on sale	
Mission Bell Soap	25c
sale price 4 bars for	
25c Rosedale Ripe Olives	35c
20c—2 cans for	
1—25c Jar Mayonnaise and 1—15c Bottle	25c
Sandwich spread, both for	
Dickinson's Grape Juice	30c
Pints	10c
Edgeworth, Life and Spur Cigarettes	60c
Package	
1 pound George Washington	
Tobacco	

Our New Fresh Meat Department is gaining fame for the excellence of the meat we sell. If you are not already a customer let this be an invitation for you to call and get one of those nice, tender, juicy steaks.

GOVERNMENT INSPECTED	
TENDER	
ROUND STEAK	22c
NICE JUICY	
PORK STEAK	23c
SIRLOIN	
(FANCY)	22c
HAMBERGER	
Pound	15c
BOILING	12 1/2c
BEEF	15c
BEST RIB	
ROAST	18c

If you want tender cuts of meat we have them

DAMON'S

UNITED GROCERS OF OREGON

Store No. 100

Phone 1-2-6-3

899 N. Commercial St.

WE PAY 18c CASH FOR EGGS

NEW BOARD ELECTED FOR COSMOPOLITAN

Three Salem Men Among Directors; Plans for Organization Formed

With reestablished hope for the future of Cosmopolitan Stores, Inc., new directors and officers have been elected and plans for a highly efficient organization have been perfected following a stockholders meeting here this week.

Tight credit and heavy accounts have been attributed as the reason for the assignment of a few weeks ago, but the solvency of the firm is unquestioned, assets being nearly three times the liabilities.

The newly elected board includes three Salem men, Lloyd T. Reynolds, F. B. Thielens, and W. I. Staley; two from Portland, H. M. Roome and C. R. Ingram; J. O. Holt of Eugene, past president; and H. Steinfeld of McMinnville.

The discontinuation of the stores at Silverton and Independence may prove feasible in clearing up the business of the company, but as yet, no definite announcements have been made from the local offices.

Classified Ads Bring Results

The Heart of Your Bank Account Is Your Charge Account at Kafoury Bros.

A Special Sale

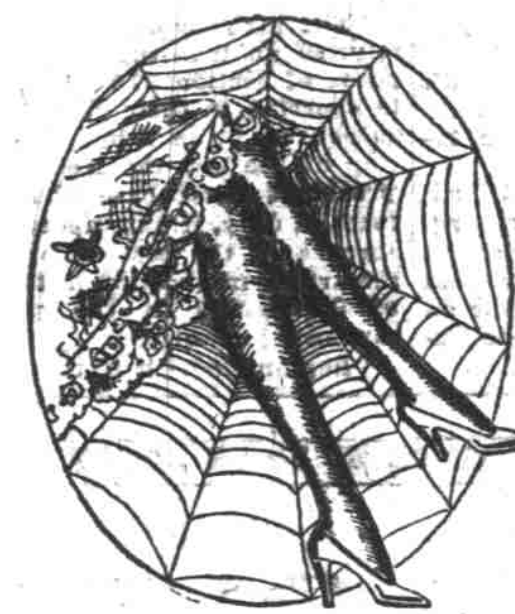
KAYSER SILK HOSE

BROKEN LINES - ODD LOTS - A SPLENDID VALUE

A Very Large Assortment to Choose From

Regular Values up to \$2.00
Very Special **\$1.49**

You buy real quality and service when you buy Kay's purethread silk hose. They have the slipper heel—Marul stripe garter top. Most all the desirable shades, pure dye. All sizes.



Kafoury Bros.

Salem Store
466 State St.

"CAN AND DO"

Portland Silk Store
362 Alder St.

BUSICK'S

STANDARDIZED CASH STORES

Fresher Foods are Better Foods

Take Coffee as an illustration, the freshness of the coffee bought at Busick's is more than an impression—Open a can of M. J. B., Hills Red Can, Golden West or Maxwell House coffee—note that deliciously fragrant aroma—and this refreshing flavor will not be found in coffee that is not delivered to you you fresh. You'll find all your foods are fresh new stock when you buy at Busick's—If inconvenient for you to come to the store Phone 455 or 456—There's no Charge for Delivery.

Golden West Coffee

1 lb. tins 49c
3 lb. tins, per lb. 48c
5 lb. tins, per lb. 47c

M. J. B. Coffee

1 lb. tins, per lb. 49c
3 lb. tins, per lb. 48c
5 lb. tins, per lb. 47c

Hills Bros. Coffee

1 lb. tins, per lb. 49c
2 lb. tins, per lb. 48c

Folger's Coffee

1 lb. tins, per lb. 49c

Schilling's Coffee

1 lb. tins, per lb. 49c

Mellow Blend Coffee

Ground to suit you
1 lb. 33c
3 lbs. 95c

M. J. B. Tree Tea

1/2 lb. packages, green 36c
1/2 lb. packages, black 39c

These prices are to be had every day in the week. Buy as your needs require—Free Delivery Service.

MEAT MARKET

You'll find just the kind of Meat you like—displayed in Our modern refrigerator counters. It's proven economy to buy good meat. Order meat with your grocery order—Phone 455 - 456.

BAKERY DEPT.

We feature a complete line of—
PASTRIES - CAKES
COOKIES - PIES
BUTTER HORNS
ROLLS
HEALTH BREAD
and 2 size loaves of white Bread
the large loaves are 2 for 25c
Small loaves 3 for 25c

C & H Sugar

Manufacture Brand Direct from the refinery — no hard lumpy sugar.
100 lb. sacks **\$5.95**
Crown Flour
—Not old warehouse stock, its newly made and shipped direct from mill to us.
49 lb. sack **\$1.95**
Fisher's Blend shipped direct to us by Fisher Milling Co.
49 lb. sack **\$2.07**
Eagle Brand Flour
The Perfect Family Flour
\$1.91 Sk

Built to Fit Your Business

GRAHAM BROTHERS TRUCKS

1 1 1/2 2-Ton

Bonesteel Motor Co.

474 S. Commercial Telephone 423