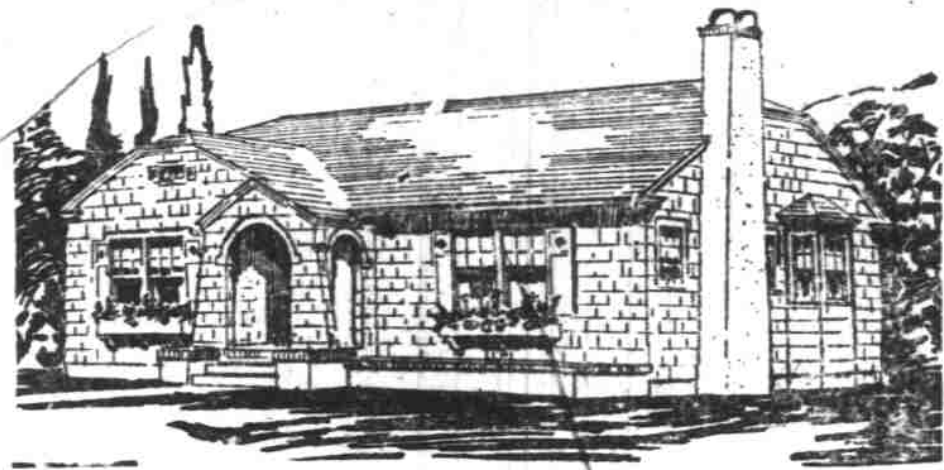


Compactness Is Feature of Cottage Plan
PLAN No. 442-A



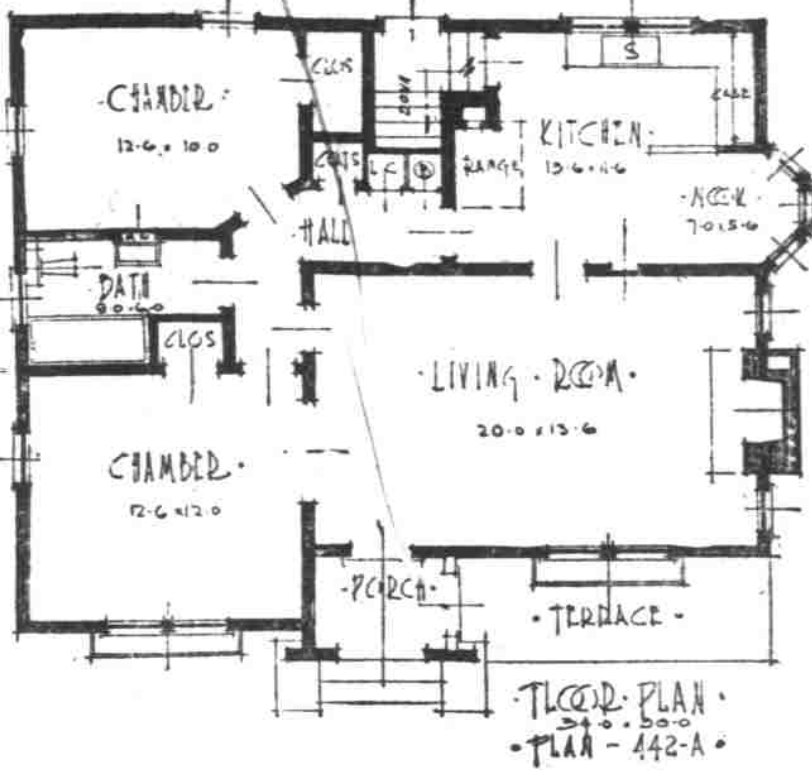
Compactness and convenience of room location are the features of the four-room cottage, especially adapted to the use of the small family, designed by the Universal Plans Service.

Use of shingles for the exterior finish combined with the attractive lines provide a most charming residence suited for almost any city location.

As in the modern trend in small house design, this plan eliminates the dining room, making use of the space in the living room, which is 13 feet 6 inches by 20 feet. Space for the intimate family meals is provided in the breakfast nook in a bay of the kitchen, insuring privacy for these parts of the house from the living room.

One of the features of the design is that both bed chambers have double exposure, insuring cross ventilation.

Two sets of blue prints and specifications for the construction of this house may be obtained for a nominal fee on application to the



Spaulding Logging Company

SALEM, OREGON : TELEPHONE 1830

ment of softwood, but all along the line from mill to retailer they are proceeding cautiously. All wish to keep their stocks low, and therefore cases are still being reported of mills disposing of surplus lots at price concessions. But undoubtedly there is less of this than there was a week or so ago. Even mills that are keen for quotations are firmer in their quotations, for they expect a stronger market in a few weeks. In fact, the West Coast mills usually demand 50c to \$1.00 more for dimensions and timbers than was the ruling price recently.

The principle groups of softwood mills, southern pine and Douglas fir producers, booked orders during the first eight weeks of 1927 which give an average per mill per week of 5% more than that for the same groups in the corresponding period of 1926. Production of these mills averaged practically the same. During the week ended February 26, southern pine orders were one per cent below production, while bookings of West Coast mills were 6% above production.

Hardwood mills have been enjoying a good volume of business from the automobile manufacturers, and now find that furniture trade is improving, and that exports are also gaining. Building trades demand is of fair volume for so early in the season. While prices of hardwoods have advanced, they are still below the levels of last fall, so that mark-ups are expected as spring trade opens.

Giant and DuPont explosives (fuse — blasting caps). Lumber and all building materials. Gabriel Powder & Supply Co., 610 N. Capitol. Tel. 2248. (*)

Henry O. Miller, 194 S. Com'l. St., where most people prefer to get their auto parts for all makes of cars. Trade here and make savings on all auto parts. (*)

G. W. Day, tires, tubes and accessories; has the Goodyear tires, the standard of the world. Mr. Day can give you more mileage. Corner Com'l and Chemeketa. (*)

Mr. Used Car Buyer: Have you seen the real buys at the Capitol Motors Incorporated? See Biddy Bishop, 350 N. High St. Telephone 2125 and 2115. (*)

FIRM TONE NOTED IN FIR MARKETS

Buyers Becoming Active Once More; Fair Priced Orders Sent Out

PORTLAND, Ore.—(Special)—Select cutting appears slightly firmer, while some of the fir mills, notably cargo plants, are seeking common cutting business, according to the current issue of the Four L Lumber News. A little improvement is noted in the prices of upper grades, fewer mills apparently pushing straight cars of excess items on the yard trade.

The Four L Lumber News thus sums up other features in the fir lumber market:

"Chicago buyers are becoming active once more, the demand for fir joists being especially improved. Some fair orders for timbers have even been sent out by Chicago commission firms.

"Railroad purchases are featured by the Burlington schedule just now being placed, and by the great number of comparatively small lots bought by eastern roads. The coast roads are all buying about up to expectations. As in 1926 it seems that six-inch clear car material is destined this year to hold close to the same prices as four-inch, the former spreads being now almost disregarded.

"Lumber yard buying for the spring has begun, and the general opinion is that the small town trade will this year fully offset any slackening in building in the cities, much of whose construction work uses but a small percentage of good lumber at any time.

"Cargo mills feel the dullness in the export trade, except at concession prices, rather keenly. Clear hemlock has had a good market in Japan, thus accounting for the scarcity of hemlock drop siding for the rail trade, but this demand seems to be falling off."

Automobile Steering of Vital Importance
"An important point truck owners often overlook in making their

purchases is the ease with which the truck can be handled," said Ernest Bonesteel of Bonesteel Motor Co., local Dodge Brothers dealer.

"It is important because it makes all the difference in the world in the prevention of accidents. A truck which responds to every touch of the wheel and braking mechanism is less likely to figure in accidents than one which is lacking in those qualities. Powerful, easy braking is probably one of the largest factors in truck driving safety. While size and weight make a difference in the handling, still the truck having the ease of steering and braking will have fewer accidents.

"Graham Brothers trucks and commercial cars are designed for easy handling and are for that reason preferred by truck drivers who really know their advantages. Anyone can observe the ease with which one of these trucks or commercial cars travels through the heaviest traffic. It stops and starts and is handled with the ease of a passenger car."

L. A. Sheeler Auto Wrecking Co., oldest in the Willamette valley. New and used parts and equipment. Low prices and quality service here. 1085 N. Com'l. (*)

Marmon factories are operating at full capacity in order to meet the demand this season for the large Marmon series 75 and the new little Marmon eight. Night shifts are being operated in all departments in an effort to keep abreast of the demand.

1925 Standard Buick Coach, in excellent condition. Looks and runs like new car. Otto J. Wilson. The Buick Man, 388 N. Com'l. Tel. 220. (*)

BUILDING PROGRAM SHOWS BIG GROWTH

Need Said to Exist for Engineers and Assistants in Government Work

WASHINGTON, D. C.—(Special.)—The United States Civil Service Commission states that the huge public buildings program recently authorized by congress is rapidly taking place. The original authorization was for the expenditure of \$165,000,000 over a period of five years, but it seems necessary to add another \$100,000,000 to meet the housing needs of government offices throughout the country, and a bill providing

for this additional sum has passed the house and is now before the senate.

The supervising architect of the treasury department is in need of assistant architectural and structural engineers for duty in connection with the building program. The Civil Service Commission will receive applications for these positions until March 31. Applicants will not be given written scholastic tests, but will be rated on their education and experience.

Full information and application blanks may be obtained from the United States Civil Service Commission, Washington, D. C., or from the secretary of the United States Civil Service board at the post office or customhouse in any city.

Portland—Northwestern Electric company shows 14.2 per cent increase in business over year ago.

The First Home Run of the Season



Will be the hit we make with the man who is not used to our class of welding and machine work. We have the equipment and experience and we know the mathematics of this business. Our guarantee protects you thoroughly.

"Your Money Back If It Doesn't Hold"

SQUARE DEAL WELDING AND MACHINE WORKS

345 Ferry Street

Salem

MAKING SUNLIGHT FOR DARK ROOMS

Great Majority of Older Houses Have Some Rooms Poorly Lighted

By Jane Stewart

Whether you are building or renovating, you will nearly always be confronted with the problem of dark rooms. The northern exposure needs sunlight, the eastern exposure warmth of tone. Even the western and southern exposures may often have too little light from a too small window or an obstruction of sunshine by neighboring buildings. And occasionally there will even be a windowless room.

The last problem is a common one in the older parts of cities where the dark "middle room" of the house is a usual architectural feature. The interesting manner in which this situation has been handled in one such home is worthy of attention of anyone who would like to make sunlight for a sunless room. The walls are painted a warm cream, while the woodwork, which fills an entire side of the room with a series of charming little cupboards, is ivory white. The double doors leading to the passage which gives upon the patio are half of glass, as are those leading on the other side to the living room. Both are hung with gold colored gauze through which the light filters with a suggestion of sun. Clattering brass candlesticks and a gilt china bowl upon the table repeat this suggestion.

Not only is a light color used for this room, but a paint carefully selected for finish. A glossy surface generally reflects more light than a dull one; and while the walls and woodwork need not necessarily have a high gloss finish, the flat finish which always absorbs a certain amount of light must be avoided in such a situation. In every detail where it can profitably be done—in hue, value and what we may here refer to as texture—everything in this treatment is subordinated to light-making. The success may be estimated to some degree by the electric light fixtures chosen. Two small fixtures suffice, proving the luminous qualities of the finish for artificial light.

Of course, this problem of a windowless room is not a particularly common one in most sections of the country; but there is seldom to be found a house or an apartment that has not some poorly lighted space. Halls, bathrooms, and kitchens frequently suffer in this respect. Attics, too, are almost invariably dark. For these, proper color selection can achieve astounding results. Bright, bright color should always be used. Where sunlight is lacking, it is particularly essential to provide the missing warmth of tone. For this purpose no color is better suited than yellow. Deep ivory, buff, and rose are also warm colors, and well adapted to a northern or eastern exposure. The darker the room, the paler should be the shade selected. For a very dark room a pale yellow or cream has excellent light reflecting properties. The effect of the glossy and the flat finish is also worth remembering.

New Nash Models Making Overseas Sales Records

That the new Nash enclosed models with their 7-bearing crankshaft motors, forward-sweeping French-type backs, and French-type roofs have met with instant public favor abroad as well as in this country, is borne out in the big increase in orders received by the company for February export shipment.

Although February, 1926, showed a Nash export sales increase of 42 1/2% over the biggest previous February in the history of the company, orders and shipments for last month were 56% greater than for the same month a year ago and it is pointed out that February, 1927, although the shortest calendar month, was over 9% larger than September, 1925, the best preceding month in Nash export history.

On March 1, export orders on hand for shipment during the month indicated another record will be broken.

In one of the most rapid sales expansions in the history of the automotive industry, the Marmon Motor Car company has doubled its distributor and dealer organization since January 1. H. H. Brooks, Marmon's general sales director, has announced.

SOFTWOOD TRADES GETTING UNDERWAY

Principal Groups of Mills Book Orders Greater Than for Period in 1926

In its review of the lumber market, the American Lumberman, Chicago, says:

Trade in softwoods is getting under way, though in important consuming sections bad weather is still a handicap to building, a heavy snowstorm having blanketed a good part of the eastern seaboard last week. But in sections where outdoor work is possible, retail yards are moving more lumber to jobs. There is not yet any pressing need for replenishment of yard stocks, but the dealers are keeping even by ordering mixed cars for rush shipment. Some of them are now more disposed to provide for later needs, but the greater number of them, confident that mills can ship quickly, refrain from speculative buying against a possible advance of a dollar or two in wholesale prices. Lumbermen in general believe there will be an active spring move-

1927 FORD COUPE

Latest Model
Will Sacrifice \$150
See it at
Fitzgerald-Sherwin Motor Co.
364 North High



A Fly In Time Saves 9,000,000

You can't kill all the flies, but you can keep them all outside. Have your windows and doors measured for our extra tight-fitting screens NOW—before the flies come in. Our screens are strong, with wooden frames, covered with a fine mesh screening. They add to the beauty of your home—and help assure you good health.

"Dependable Serving the Lumber Customer"

J. W. Copeland Yards

WEST SALEM — TELEPHONE 576
Yards in West Salem, Albany, Lents, Hubbard, Yamhill, Hillsboro, Eugene, Corvallis, Grants Pass, Park Rose

SEE WOOD'S For Auto Painting

We offer you the best painting facilities in the city—our investment represents our responsibility.

Our job satisfies you for appearance—your pocketbook for price

Satisfy Yourself—Visit Our Shop

- Auto Tops and Upholstering
- Fender and Body Repairs
- Glass Replacement
- Washing — Greasing — Tires

Wood's Auto Service Co.

545 Chemeketa Street
Salem Phone 809 Oregon



"A man has never really settled down until he buys or builds a home. The man who gets a money's worth of lumber is the man who isn't expecting more than that."

LUMBER

and all BUILDING MATERIALS

Gabriel Powder & Supply Co.

Office, Yard and Warehouse
610 North Capitol Telephone 2248

6.67% IN OREGON'S GREATEST PUBLIC UTILITY

FRIENDLY

It Is Nice to Receive Dividends

If you don't believe it you can ask any of our Company's thousands of stockholders right here in Portland and Oregon.

If you are not receiving dividends let us tell you how easily it's done.

\$10.00 Will Start You

Don't get the idea that it takes a lot of money to become a profit-sharing partner in this Company—the Greatest Public Utility in the State of Oregon.

You can subscribe for a share of our \$6.00 First Preferred Stock by paying \$10.00 down and \$10.00 a month for 8 months.

This stock is sold for \$90.00 a share to yield 6.67 per cent.

Our easy-payment monthly-savings method is very simple and at your service any time.

Our great army of shareholders is increasing by the hundreds every month.

You are cordially invited to become "one of the family."

Drop in and let us explain our plan in more detail without any obligation on your part.

Investment Department

237 North Liberty St.,
Salem, Oregon

Portland Electric Power Co.

Division Offices at

Salem, Oregon City, Gresham, Hillsboro and St. Helens, Ore., and Vancouver, Wash.