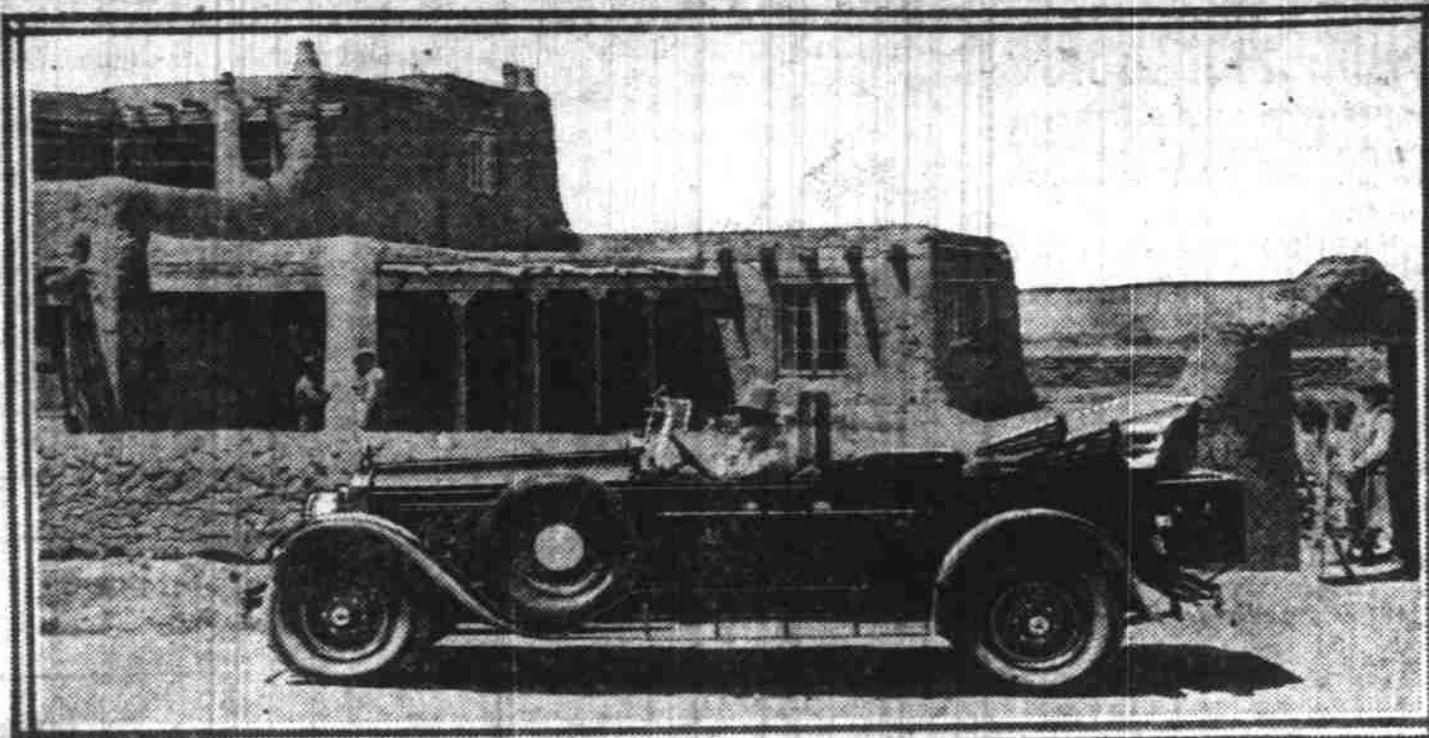


MOTOR CARS APPEAR IN MANY NEW FIELDS

Western Products Writes New Chapter in Majestic Woods of Northwest

The Canadian Pacific railway recently began logging at Yakk, British Columbia, in an area containing 32 million feet of timber. The Canadian Pacific has a vision beyond tomorrow for they are harvesting the centuries old crop of timber and planning afterwards to convert the land into profitable farms. The small town of Yakk, until recently a small and unimportant place, is today the center of activity and is resounding to the blows of the woodman's ax. It is a gigantic undertaking but it means logging under adverse conditions in which the ordinary means of laying expensive logging roads, skidding the logs long distances by horses or donkey engines and ropes, have been abandoned and Moreland 6-wheel trucks are used instead. It means that a new chapter is written in logging under adverse conditions. It is an industrial drama keenly watched by logging operators of the Pacific Northwest. As its inception the engineers in charge believed that because of the mountainous character of the country, the steep grades and the absence of roads, it would be necessary to utilize caterpillars or tractors.

E. Holm of the Canadian Pacific railway, who has charge of the clearing of the great area, spent some time in the U. S. investigating the various methods of transportation and later placed an order for a Moreland 6-wheel, 10 ton truck, to be delivered at Yakk for trial purposes. After a trial



Into the romantic Indian country of New Mexico, the land of Kit Carson, Lew Wallace and prehistoric cliff dwelling Indian tribes, transcontinental travelers now tour in motor cars with the comfort of the boulevards to break their long railroad journey.

lasting six weeks, it was found that the 6-wheel truck could carry heavier loads with less operating cost than a tractor, or two 5-ton trucks, and considering that the grades sometimes reach 22%, it shows that this California product must have offered great advantage.

Imagine an immense forest of timber, a couple of puny men, puny in comparison to the growing giants, sawing at the base of these trees. In 15 or 20 minutes the giants topple over, causing a trembling to the very mountains as they fall. Immediately cut into lengths, now called logs, loaded on the truck which wound its way up to the fallen giant and off it goes carrying its load directly to the place desired. It is the

Tourists are met at different points along the Santa Fe railroad, taken into the back country, and mountains, housed in perfect little hotels and returned after a day or several days to another train to continue their journey. It is a new plan in railroad transportation instituted by Fred Harvey of Santa Fe eating house fame, and the Santa Fe railroad. A whole fleet of Packard Eights, both enclosed and open cars is engaged in the service. The accompanying picture shows one of the cars in front of a typical dome structure of the country.

first time in its history, that the Canadian Pacific railway has used motor trucks for hauling in an undertaking of this character, for heretofore it has been thought necessary to lay rails and operate rail logging transportation systems.

In the Klamath Falls district of Oregon, another heavily wooded district, Moreland 6-wheel trucks are creating outstanding records of haulage performance. It is no longer necessary to skid the trees to railway sidings for shipment to the mill. Trees are now loaded directly on the 6-wheel, dual-axle drive trucks at the place where they are felled and are then hauled over virgin ground without the laying of any roads. After the

first cutting, temporary roads are built and trucks are hauling huge loads out of forests to the railroads and the waterways.

Greasing of Spark Plugs Good Weather Stunt

Moisture on the exposed part of the porcelain will often cause a spark plug to fire irregularly. This trouble may be obviated by greasing the porcelain with vaseline or hard grease. A useful bit of knowledge during a protracted spell of bad weather.

Eugene Fruitgrowers' association, with 1600 farm stockholders, did \$2,000,000 business in 1926.

TWO SALES GROUPS OF OAKLAND PEOPLE

Experienced Automobile Men in Charge of Eastern and Western Sections

In line with the rapidly expanding program of the Oakland Motor Company, W. R. Tracy, vice president in charge of sales, announced a division of the 22 districts of the country into two sales groups to be known as the eastern and western divisions with a seasoned automobile man in charge of each, according to word received here by Mr. Vick of the Vick Brothers Oakland-Pontiac dealers. W. B. Sawyer, formerly Boston district manager for the Oakland company, has been named by Tracy as eastern sales manager; and E. M. Lubeck, formerly Chicago district manager for Oakland-Pontiac, becomes western sales manager.

Both men, it was stated, will maintain headquarters at the Oakland factory, Pontiac, Michigan, where they will be in direct touch with Tracy, and each will have full charge of all sales activities in his respective division.

"Both men are old timers in the automobile industry and have a thorough knowledge of motor car selling," the local merchandiser declared.

"Sawyer has been with the Oakland company for nearly seven years, serving for the past year as Boston district manager and for five years previously as general manager of the Oakland Motor Company of New England, Oakland-Pontiac dealers for Boston.

"Lubeck was Chicago district manager for Oakland for a year and a half, coming direct from the

Apperson Automobile Co., where he held the position of general sales manager. His experience in automobile selling includes previous connections with some of the largest manufacturing concerns in the country.

"Tracy announced the creation of the new divisions and the ap-

pointments of Lubeck and Sawyer at the annual banquet of Oakland dealers and officials at Hotel Commodore, New York, recently. Both appointments, he explained, were due to the exceptional sales and executive ability displayed by Sawyer and Lubeck in their for-

mer capacities as Oakland district managers."

First National Bank, the bank of friendship and helpfulness in time of need. Interest paid on time deposits. Open an account and watch your money grow. (*)

Twelve Years OF DEPENDABILITY

It was Dodge Brothers distinction, twelve years ago, to create a more dependable car in its price class than previously had been known.

This enviable leadership Dodge Brothers have rigidly maintained.

Wherever difficult conditions try the souls of men and the stamina of motor cars, you will find Dodge Brothers product foremost in favor.

You will find also that six, eight and even ten years of service are not exceptional for the car; that frequently it delivers mileage running well into six figures; and that maintenance cost is remarkably low throughout its long and useful life.

These facts powerfully witness Dodge Brothers success in constantly bettering a product that was exceptional even at the start.

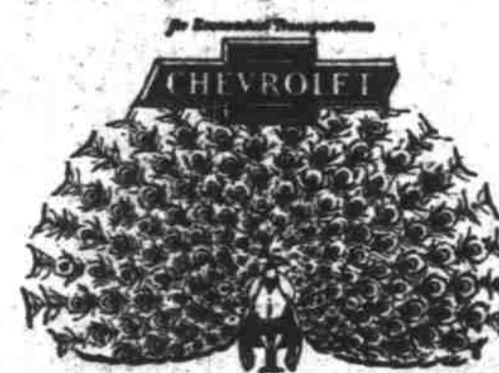
Touring Car	\$ 975
Coupe	1030
Standard Sedan	1090
Special Sedan	1180
DeLuxe Sedan	1315

Delivered

Bonesteel Motor Co.
474 South Commercial Street
Telephone 423

We Also Sell Dependable Used Cars

DODGE BROTHERS MOTOR CARS



The Most Beautiful Chevrolet in Chevrolet History!

-a host of improvements amazingly reduced prices!

- Not only does this most beautiful of all low-priced cars offer new paneled and beaded Fisher bodies but also many new fine car features and mechanical refinements such as:
- Full-Crown Fenders**
New full crown one-piece fenders add a note of smartness to the new and beautiful body.
- Bullet-type Lamps**
Modern, new bullet-type head and foot lamps add a pleasing touch of beauty and style.
- AC Oil Filter**
A new AC oil filter removes all dirt from the oil supply—assuring greater oil mileage and a minimum of motor wear.
- AC Air Cleaner**
A new AC air cleaner safeguards motor parts from excessive wear by removing all dust and grit from air passing through the carburetor.
- New Tire Carrier**
A new tire carrier of improved design is mounted on frame—positively free from body.
- New Door Handles**
New remote control door handles—located in center of door—provide a beauty and convenience feature new to the low-price field.

The Touring or Roadster . . .	\$525
The Coach . . .	\$595
The Coupe . . .	\$625
The Sedan . . .	\$695
The Sport Cabriolet . . .	\$715
The Landau . . .	\$745
1-Ton Truck . . .	\$495
(Chassis Only)	
1/2-Ton Truck . . .	\$395
(Chassis Only)	
Balloon Tires now standard on all models. All prices f.o.b. Flint, Mich.	

Come in and see these strikingly beautiful models!

Newton Chevrolet Company
OPPOSITE THE CITY HALL
131 HONE 1000

"Everyone Is Talking Chevrolet"

QUALITY AT LOW COST

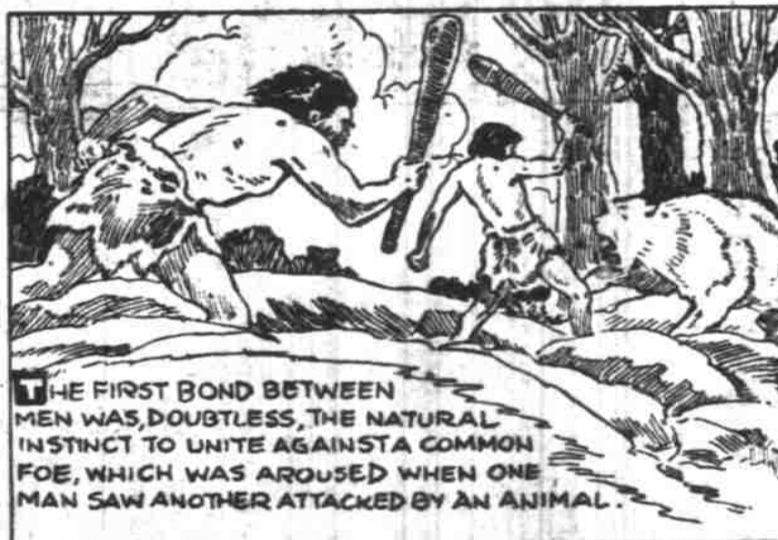
HIGH LIGHTS OF HISTORY

The Origin of Tribes.

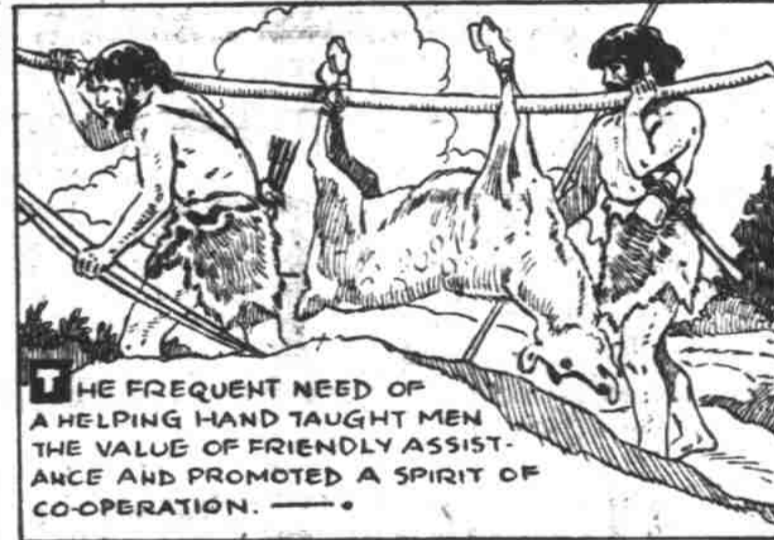
By J. CARROLL MANSFIELD



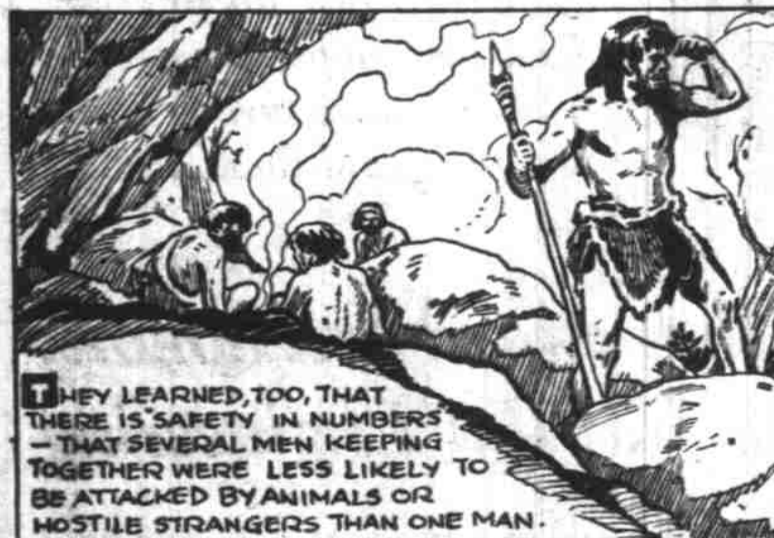
IN VERY EARLY PRE-HISTORIC TIMES EACH MAN ROAMED THROUGH THE VAST FORESTS ALONE. EVERY OTHER MAN WAS A STRANGER AND AN ENEMY AND WHEN TWO MEN COULD NOT AVOID MEETING THEY PROBABLY FOUGHT LIKE WILD BEASTS.



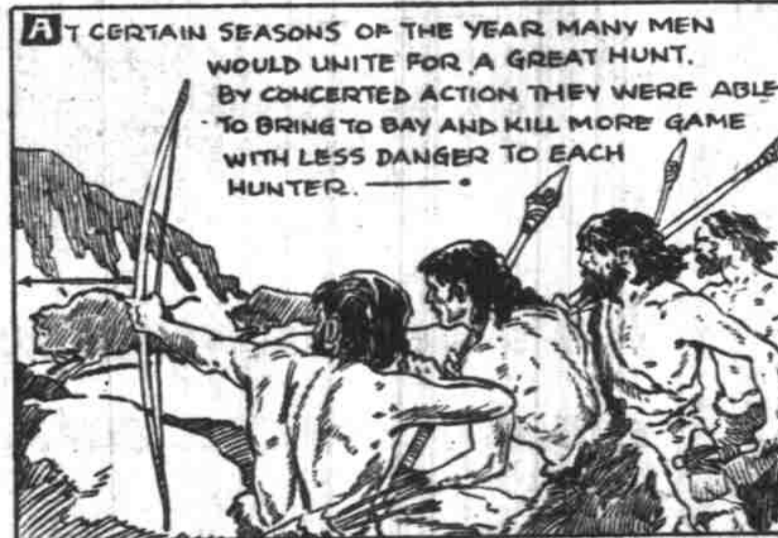
THE FIRST BOND BETWEEN MEN WAS, DOUBTLESS, THE NATURAL INSTINCT TO UNITE AGAINST A COMMON FOE, WHICH WAS AROUSED WHEN ONE MAN SAW ANOTHER ATTACKED BY AN ANIMAL.



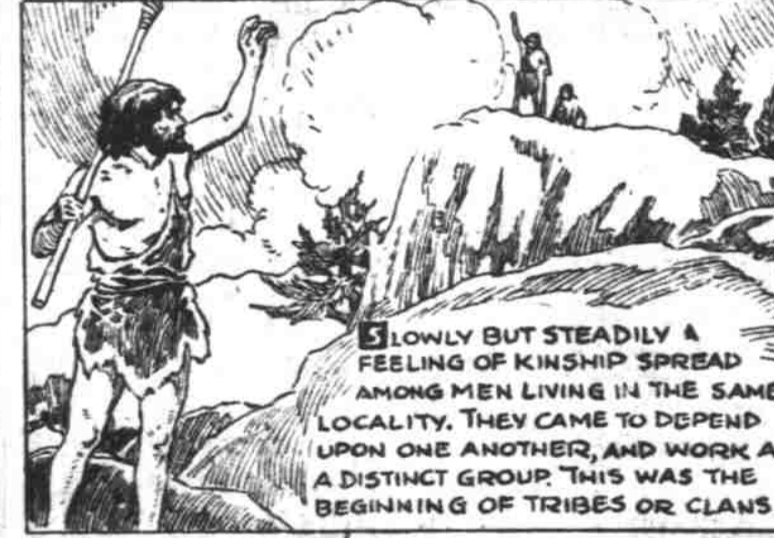
THE FREQUENT NEED OF A HELPING HAND TAUGHT MEN THE VALUE OF FRIENDLY ASSISTANCE AND PROMOTED A SPIRIT OF CO-OPERATION.



THEY LEARNED, TOO, THAT THERE IS SAFETY IN NUMBERS—THAT SEVERAL MEN KEEPING TOGETHER WERE LESS LIKELY TO BE ATTACKED BY ANIMALS OR HOSTILE STRANGERS THAN ONE MAN.



AT CERTAIN SEASONS OF THE YEAR MANY MEN WOULD UNITE FOR A GREAT HUNT. BY CONCERTED ACTION THEY WERE ABLE TO BRING TO BAY AND KILL MORE GAME WITH LESS DANGER TO EACH HUNTER.



LOWLY BUT STEADILY A FEELING OF KINSHIP SPREAD AMONG MEN LIVING IN THE SAME LOCALITY. THEY CAME TO DEPEND UPON ONE ANOTHER, AND WORK AS A DISTINCT GROUP THIS WAS THE BEGINNING OF TRIBES OR CLANS.



THE GROWTH OF THIS FEELING OF DEPENDENCE LED PEOPLE TO GATHER IN SMALL COMMUNITIES. THESE VILLAGES WERE BY NO MEANS PERMANENT AS FROM TIME TO TIME THE TRIBE WOULD MIGRATE TO BETTER HUNTING GROUNDS.



IN SOME CASES THE MEMBERS OF A CLAN, LIKE CERTAIN TRIBES OF AMERICAN INDIANS AND SAVAGE RACES IN OTHER PARTS OF THE WORLD, WOULD MAKE THEIR HOMES IN ONE LARGE DWELLING AND DEVOTE THEIR LABOR TO THE COMMON GOOD.



INvariably, SOME MAN AROSE WHO BY REASON OF HIS SUPERIOR STRENGTH AND PROGRESS ASSUMED LEADERSHIP OF THE CLAN AS ITS CHIEF.



AT FIRST ALL TRIBAL QUESTIONS WERE SETTLED BY THE CHIEF, WHO UPHOLD HIS DECISIONS BY THE WEIGHT OF HIS CLUB.



THERE WAS CONSTANT WARFARE BETWEEN TRIBES AND THE PRINCIPAL FUNCTION OF THE CHIEF WAS TO LEAD HIS FOLLOWERS INTO BATTLE.



MANY TRIBES WERE CONQUERED BY MORE POWERFUL NEIGHBORS. OTHERS, MORE SUCCESSFUL, SUBJUGATED THEIR ENEMIES AND AS THEIR OWN NUMBERS MULTIPLIED, BECAME LITTLE NATIONS.

If You Save This Page Each Week You Will Have a Complete History of Man.