

FORMALLY ANNOUNCE NEW LITTLE MARMON

Small Eight Cylinder Automobile to Be Introduced at New York Show

The Marmon Motor Car company, which for 25 years has manufactured one of America's finest automobiles, will soon introduce a quality small motor car as a companion to the Marmon Series 75, according to an announcement by G. M. Williams, president of the Marmon company. The first formal presentation of Marmon's new car will be at the New York Automobile show, beginning January 5.

This announcement was made at a gathering of automobile trade journal and newspaper representatives at the Marmon factory in Indianapolis and confirms the news widely circulated for many months that Marmon would soon manufacture a small car which would completely round out its line of quality automobiles.

The new car will be known as the Little Marmon and will be powered with an eight-cylinder engine of Marmon design and manufacture. Standard body types to be placed in production immediately, will sell below \$2,000 at the factory. These will be augmented at a later date by a line of custom-built body styles.

Mr. Williams in his statement pointed out that although the Little Marmon will represent an entirely new type of automobile, it has a background of seven years of planning by Marmon engineers of which several years were consumed in actual experimentation. This included not only an intense study of American highway and traffic conditions, but a survey of European motor car construction. Mr. Williams, himself, made three trips abroad to analyze developments in the foreign automobile field.

"The Little Marmon is in no sense a European type of motor car, but has been designed to conform with American standards of stamina, beauty, power and comfort," Mr. Williams said. "It retains all of the features of fine car construction so long associated with the Marmon name, yet its size, power, flexibility and roadability make it possible to cope with present day traffic and road conditions. It will be built in Marmon factories at Marmon plants of precision manufacture.

Simultaneously with his announcement of the Little Marmon, Mr. Williams stated that the 1927 plans of the company call for a larger production of Marmon Series 75 automobiles. Thus the company will offer to the public a complete line of quality motor cars with a wide range of standard and custom-built body styles to meet the individual tastes of the critical motorists.

New sweaters! A large shipment just in. New patterns, new shades in the popular pull-over and coat styles. Scotch Woolen Mills.

Quality painting, both varnish and lacquer work, in our modern equipped paint shop. Washing, greasing and night service, tire repairs. Wood's Auto Service. (*)

WABASH NEW HOME OF AXLE COMPANY

The Relay Axle Drive Now to Be Manufactured in Indiana

E. W. Bassick and W. R. Bassick, both of Bridgeport, Conn.; E. S. Evans, Detroit, and M. H. Furlaud, New York, have been engaged for several years in the development of a new type of final drive for motor trucks and busses which is known to the trade as the Relay Axle Drive.

E. W. Bassick and W. R. Bassick were formerly president and vice president of the Bassick Manufacturing company, manufacturers of the Alemite lubricating system. E. S. Evans is a well known manufacturer of automobile loading devices. M. H. Furlaud is a banker of New York and Paris.

During the past year, trucks equipped with the Relay Axle have been put into commercial use in all classes of service, with the most satisfactory results. These trucks have demonstrated their ability and economy under the most trying conditions. The results made by these vehicles is responsible for wider expansion just announced.

To take care of the expanding business and to further carry on the development of the Relay Axle equipped truck, E. W. Bassick and associates have acquired the capital stock of Service Motors, Incorporated. The service plant at Wabash, Ind., is one of the finest truck plants in the country. It is of the most modern type of construction, designed and built for the efficient production of motor vehicles. The plant has a floor space of approximately 250,000 square feet, giving a capacity of 10,000 to 12,000 trucks per year.

For the past several years the Relay Axle has been manufactured by and in the plant of the Com-

merce Motor Truck company of Ypsilanti, Mich. It is planned to form a new corporation, with headquarters at Wabash, amalgamating the two businesses. The officers and directors of the new corporation will be announced at an early date.

Service Motors, Incorporated, have been successfully manufacturing trucks over a period of years. G. L. Gilliam, president of Service Motors, Incorporated, will be an officer of the new corporation and have active charge of the operation of the business.

W. R. Bassick, president of the Commerce Motor Truck company, will be an officer and director of the new corporation and will be actively interested in the new business. M. A. Holmes, who for a number of years was sales manager of the Republic Truck company, now sales manager of the Commerce Truck company, will be in charge of sales for the new corporation.

The men directing all plant and sales operations have long experience in the automotive industry. It is stated that the present field and distributor organization will remain intact, and an aggressive merchandising program will be launched immediately.

Army and Outing Store. Biggest bargain in clothing, shoes, underwear, hosiery, gloves, valises and suit cases. The working man's store, 189 N. Commercial. (*)

The Commercial Book Store has everything you need in books and stationery and supplies for the school, office or home at the lowest possible prices. (*)

MOTORISTS GROUP SELVES INTO CLASS

death less remote. To the contrary, he believes that passing the responsibility to an insurance company will result in further carelessness.

"Like the AAA, he is not against insurance. As a matter of fact, insurance is one of the features of club membership that appeals to the average car owner. He objects to compulsory protection on the ground of an unfavorable transfer of responsibility."

Interest in more good roads, more equitable taxes, fairness in subjects has served to bring an in-legislation and dozens of other increasingly large number into the membership of clubs, the statement concludes, but these are less important factors at present as inducements to membership than interest in safety.

Special as long as they last—body powder and bath salts only 69c, regular 75c each. These make wonderful Christmas presents. Crown Drug, 332 State. (*)

The Man's Shop saves you a ten dollar bill on every quality suit. Shirts, hats, ties, collars. High grade clothing, perfect fitting, long wearing. 416 State. (*)

The Peerless Bakery, 170 N. Commercial. Sanitary, up to date. Prompt delivery. Bakers for those who appreciate the best. Increasing patrons tell the tale. (*)

FEMININE DRIVERS WANT REFINEMENTS

Oldsmobile Engineers Constantly Seeking to Improve Control

Brawny men, muffled in sheepskin coats, driving Oldsmobiles mile after mile over the snow covered hills of the General Motors proving ground present a far different picture than that of a dainty costumed woman parking her car at a boulevard curb in front of the home of a friend. Yet the ease with which a woman can handle an Oldsmobile is directly due to the work of these seasoned test engineers.

The growing feminine influence in motor car design is a substantial factor in governing the nature of research tests conducted by Oldsmobile at this great out-door laboratory of General Motors. While experiments are constantly being made to improve the stamina, power and hill climbing abilities of the cars, much time, attention and talent are concentrated in perfecting the niceties of the car, the ease in driving and the comfort of riding so attractive to women motorists.

Heavy traffic in city streets and the small parking areas have made it necessary that a car should be nimble in traffic and easy to park, particularly from the woman driver's view point. With this in mind one of the tests to which Oldsmobile is subjected at the proving grounds is one to assure ease of handling by accurate and scientific study of this element.

This mechanism consists of an auxiliary wheel used in conjunction with the regular steering wheel. The auxiliary wheel is equipped with two recording mechanisms, regulated by accurate springs, which register the exact pressure applied to turn the wheel to the right or left. This mechanism consists of yokes which operate on brass cylinders each containing 16 grooves, and each groove registering to a fraction of the required pressure.

Each pound of pressure required to turn the wheels is registered on the yoke on the right or left in the first groove, where it stays until an additional pressure is necessary. This method forms an easily read record of just how easy it is to steer the Oldsmobile. A somewhat similar mechanism is attached to the clutch pedal to record the ease with which the clutch may be released or engaged.

The tests are made for two reasons. One series of tests are made to prove the value of the improvements Oldsmobile engineers are constantly developing. The other group of tests are those which are made continuously on cars taken from the production line to check up on current production. Combined, these miles and miles of driving with accurate recording instruments attached to various units of the car assure the proper development of new ideas and that those now in use are ever kept up to the highest standards.

The Cherry City Baking Co's bread, pies and cake are of highest quality. One of Oregon's most sanitary bakeries; visit it. Worth while. A Salem show place. (*)

The Opera House Drug Store. Service, quality, low prices, friendship give increasing patronage. Old customers advise friends to trade here. High and Court. (*)

A CHAIN COMPARTMENT
A convenient compartment to carry chains may be constructed easily by fastening a small box under the floor boards, with a finger hole in the lid. A piece of burlap or old carpet in the box will prevent rattling.

Gabriel Powder & Supply Co. lumber, building materials, paints, and varnishes, roofing paper. Get prices here and make a big saving. Office, 175 S. Com'l. (*)

ADJUSTED BRAKES SHOW BEST RESULT

Make Inspection Every 30 Days Says President of Automotive Group

(By Edwin Greer, president of the General College of Automotive and Electrical Trades, Chicago, Ill.)

Brakes exert their greatest effect just before the wheels stop and the tires begin to skid. One brake gradually applied will give better results on the level or on up grades than when either one or both are suddenly applied.

Brakes unevenly adjusted will throw a vehicle sidewise out of its track. Sudden application of both foot and emergency brakes hastens the "blewing" of the vehicle from its track and the period during which the whole dependence is on the skidding friction of the tires. This statement does not apply to steep down grades.

Brakes applied so as to lock the wheels prevent using the engine as a brake. Two brakes, foot and emergency, when the first one applied is in good condition will not stop the vehicle on the level or up grades as quickly as one. Brakes will not stop a vehicle

TO LOOSEN A TIGHT NUT OR BOLT

TO CLEAN THE GLASS

Next time an unusually tight nut or bolt is encountered, try placing two wrenches on it instead of one, the handles in a V position. The pull jointly on both wrenches. This distributes pressure over several faces of the nut or bolt and the jaws of the wrenches.

Even though a brake lining is made of asbestos, which is virtually incombustible, a dragging brake is fully capable of setting. If brakes are permitted to drag the brake lining and brake drums will be worn down unnecessarily. If the drag is pronounced, sufficient friction heat may be generated when the car is on the road to burn the paint of the brake drums and surrounding parts, and in certain cases I have found, actually starting a fire. Trying out the brakes with the rear wheels jacked up, will reveal such dragging, and will also show whether the right and left wheel brakes are operating alike.

Automobile owners are taking a chance if they fail to see that their brakes are well inspected every 500 miles or thirty days, depending on the use to which the car is put. Inspect them—now!

Cottage Grove—Old Musick mine operating steadily, with 10-stamp Champion mill.

YOU'LL BE HAPPY, TOO

if you give your car a set of McCLAREN TIRES AND TUBES For Christmas

"The Tire That's Guaranteed to Cost Less Per Mile"

SMITH & WATKINS
"The Right Spot for Tire Service"
PHONE 44

Did Your Radiator Freeze?

The recent cold snap caught many motorists unawares

Don't drive with a leaky radiator. Art Bashore will fix that leak—and it will stay fixed.

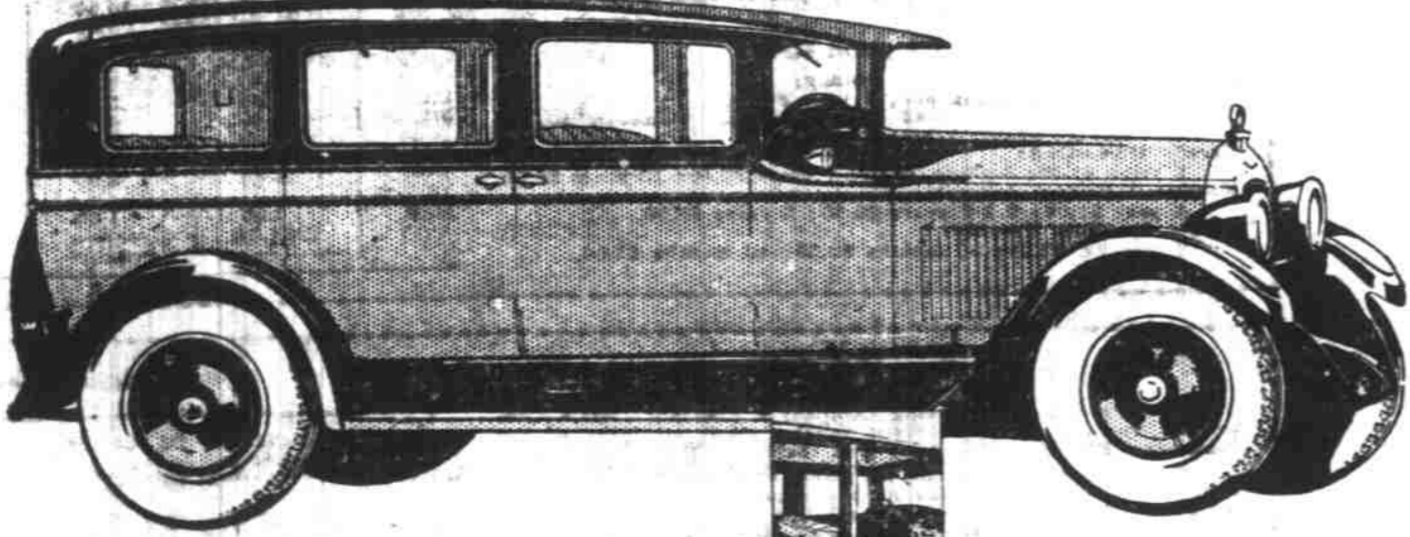
O. J. HULL
AUTO TOP & PAINT CO.
267 S. Commercial Phone 578

Special as long as they last—body powder and bath salts only 69c, regular 75c each. These make wonderful Christmas presents. Crown Drug, 332 State. (*)

The Man's Shop saves you a ten dollar bill on every quality suit. Shirts, hats, ties, collars. High grade clothing, perfect fitting, long wearing. 416 State. (*)

The Peerless Bakery, 170 N. Commercial. Sanitary, up to date. Prompt delivery. Bakers for those who appreciate the best. Increasing patrons tell the tale. (*)

Paige-Jewetti forecast the New Year's fashion



THE very lines of the new Paige-Jewetti Sedans stamp them style leaders of the season. But their charm goes far beyond the graceful contours of their body lines. Smartness is written indelibly everywhere.

Beautifully clustered instruments glow in reflected light. Mohair upholstery covers deep nested springs. There are comfortable arm rests and silken toggle grips—skillfully inlaid walnut-finish panels—solid walnut steering wheel—twin smoking sets. The whole interior breathes an air of custom-exclusiveness never before found in a car so moderately priced. Two-tone color combinations enhance the exterior lines.

And all of this style and charm is yours in addition to an even finer chassis. The larger, more powerful, speedier motors are equipped with an air cleaner, high pressure lubrication, silent chain timing, and bronze-backed bearings. Paige-Hydraulic 4-Wheel brakes give maximum safety always.

We will gladly show you—and permit you to drive—one of these Style Sedans or any one of the fourteen charming body types and color combinations in this year's Paige-Jewetti line. Come in soon.

Trumm Motor Co.
349 North Commercial Telephone 959

Last Minute Gift Sale Ends December 24th

Not many more days before Christmas—but our Last Minute Gift Sale will take care of those nearly forgotten gifts without straining your budget. You'd like to receive something for your car... your friends would like it just as much, so don't hesitate—

- Motometers**
You can make no wiser selection than a genuine "Boyce" "Midget," for small cars, only \$2.47
"Universal," larger \$5.25
"Standard," for large cars, at \$7.20
- "Glo-Lite"**
A welcome gift. Attached to motometer, it lends a touch of color and makes it easy to read motometer at night.
Small size \$1.95
Medium or large \$2.45
- Radiator Ornaments**
Reduced 20%
Every motorist likes to dress up his car—our figure ornaments offer many distinctive designs.
- Fancy Wing Caps**
—are sure to please. These are of cast brass, heavily nickeled. With a motometer, they make a gandy combination.
"Fancy" cap for large cars \$5.25
"Junior," for smaller cars \$2.55
- Neva-Lost Gas Tank Cap**
A useful gift. Only \$1.20
- Driver's Back Cushion**
Nothing could be more welcome, especially for ladies and small persons. Special value at \$1.10
- Smithkit**
Here's a practical gift for your friends who smoke. Match box holder, removable ash receiver and automatic cigarette server. Only \$1.65
- Ash Receivers**
Every car should have one or two, so you can't make a mistake in giving them. "Princeton"—a beautiful combination ash receiver, match box holder and cigar rest. Special at 74c
"De Luxe"—a most attractive ash receiver and match box holder. A bargain at \$1.45

To Please Outdoor Folks

- Touring supplies from "Western Auto" give year 'round pleasure and are sure to be enthusiastically received. These low prices show what savings we offer.
- Vacuum Jars and Bottles**
All at greatly reduced prices. All Purpose Jars—gallon size \$3.20 and \$4.25
Vacuum Bottle—enamel case—pint.. \$1.60
Vacuum Bottle—quart size at... \$2.35
Same, corrugated nickel cases, \$2.15 and \$3.20
Stanley Unbreakable Bottle—quart \$6.80
Food Jars—wide mouth—pint \$2.80
Same—quart \$3.85
- Victor Aluminum Set**
Gives lasting pleasure. Includes 3 cooking pots, coffee pot, 4 cups, 4 plates, 2 frying pans. All neat into largest pot. Reduced to \$7.85
- Swing Spout Emergency Set**
Something every motorist wants. 3 durable containers holding 2 gal. gas, 1 gal. oil and 2 gal. water—with heavy felt lined steel cover. Reduced from \$9.90 to \$7.90
- Gloves and Robes**
Reduced 15%
Many styles and patterns. All high quality.

- Bumpers Are Welcome**
They dress up the car and protect it from damage. Any of these will please.
"Win Bar"—special for Ford, Chevrolet, Star and Overland, at \$7.95
Same—heavier, for medium cars \$9.90
Twin Bar heavier, for large cars \$14.60
Double "X" cross bar style—fer small cars \$13.45
Same, for larger cars \$14.95
- Stop Signals**
—make ideal gifts for "him" or "her."
"Kay-Bee"—a popular, easily attached signal, only \$1.60
Drum Type—very sturdy—substantially reduced \$2.05
"Stover" combination stop signal, tall light and license holder. Sale price \$3.95
- Roadlights and Spotlights**
Can you think of a motoring friend who wouldn't welcome one or the other?
"Dandy" Spotlight—an excellent light at a low price \$1.19
"Leader"—good looking and reliable. Specially priced at \$1.60
"Williams, Jr."—well known. A handsome light—priced low \$3.05
"Darius"—none better. This price is very low \$6.20
"Kay-Bee" Roadlight. Nationally known and popular \$4.25
"Tiffany" Parking Lamps
Useful as well as decorative. Dandy gifts.
Black \$1.20
Japanned \$1.20
Nickel \$1.45

- A Clock Will Please**
... and most cars need one. These are fully guaranteed.
"Day-Nite"—nicely nickeled with radium treated \$2.40
hands—on sale at... \$6.95
"12-Day" lever winding flush type. Very reliable \$6.95
Rim Wind and Set—12-day style. Sure to please \$9.90
- Step Plates**
Always high in favor as gifts. Attractive in appearance and practical. Adjustable style—fit any running board. \$1.90
Same, with kick-plate.. \$2.15
"Klassy" Plates—splendid plates at a low price—each \$1.25
"Courtesy" combination step plates and courtesy lights. Per pair \$5.20
Same, large size, pair... \$5.95

Give Joy to the entire family!
with "Precision Balanced" Western Air Patrol
You can select no gift that will give greater or more lasting pleasure to the entire family. At our regular low prices, both these sets are unequalled values.

6 Tube - 2 Control \$90 Without Accessories \$149.50 Complete
5 Tube - 3 Dial - \$55 Without Accessories \$96.50 Complete

For ease of operation, natural tone and handsome appearance, this set is unequalled at our low price.

This superior five-tube set has earned a host of friends who voice their satisfaction with enthusiastic letters.

Sold on Convenient Terms and Fully Guaranteed

Tourist Motor Coat For the man who likes to tinker around the car this is just the gift. Sale price \$3.95

Exchangeable Gifts purchased here are exchangeable at any other Western Auto store.

More than 150 Stores in the West
Western Auto Supply Co.
Salem Store, Corner Court and High Telephone 796

"Buxton" Auto Keychain
Something every motorist will welcome. Ten cowhide with six strong hooks. Special sale price 85c