

## TAX VALUATIONS DISPLAY INCREASE

Assessments Grow Faster in 1926 than in 1925, Report of Body Shows

Assessed valuations of all public utilities in Oregon for the year 1926, as fixed by the state tax commission, aggregate \$269,511,716.11 as against \$258,532,006.92 for the year 1925. The increase in the assessed valuations of these utilities for the year 1926, when compared with those for the year 1925, was approximately \$7,000,000. The apportioned values for the year 1926 total \$161,573,594.35 as against \$155,053,707.71 for the year 1925.

Steam railroad properties which in 1925 were assessed for \$149,975,521 were increased this year to \$151,934,241.50. Electric railroad properties were reduced from \$3,508,075 in 1925 to \$3,458,115 in 1926. Other utility assessments for the years 1925 and 1926 follow:

Car companies—For year 1925, \$2,323,546.72; for year 1926, \$2,476,418.56.

1925, \$9,413,535.20; for year 1926, \$9,891,816.

Water and gas—For year 1925, \$13,566,979; for year 1926, \$15,596,089.

Joint utilities—For year 1925, \$56,149,359.10; for year 1926, \$61,053,157.

Express companies—For year 1925, \$516,987.50; for year 1926, \$527,933.05.

Telephone companies—For year 1925, \$3,027,315.50; for year 1926, \$3,071,135.60.

Telephone companies—For year 1925, \$30,069,737; for year 1926, \$31,613,210.

Apportioned values for 1926 follow:

Steam railroad, \$96,825,534.33; electric railroads, \$1,331,543.05;

car companies \$1,616,146.67; electric companies \$5,674,604.64;

water and gas companies \$3,407,760.74; joint utilities \$32,755,542.73; express companies \$339,836.35; telegraph companies \$1,333,603.81; telephone companies \$12,560,431.53.

Nash leads the world in motor car values. Beautiful display of new models at the F. W. Petty-John Co., 355 N. Com'l. (\*)

Buster Brown Shoe Store. High class, stylish looking, comfort giving, long wearing shoes for the least money. Come and be convinced. 125 N. Com'l. (\*)

## SOCIETY

(Continued from page 7)

were Mr. and Mrs. H. A. Keene, Mr. and Mrs. A. H. Bunn, Mr. and Mrs. Herbert Nash, Mr. and Mrs. O. Neelands, Mr. and Mrs. R. A. Elvins, Mr. and Mrs. C. C. Chaffee, Mr. and Mrs. Clifford Chaffee and daughter Leta, and Mr. and Mrs. O. A. Noyes.

Benefit Card Party at Parish House

The ladies of St. Vincent du Paul parish will sponsor another of the delightful card parties in

## Royal Wedding Cake Sent From U. S.



This wedding cake, made by Otto Bender, pastry cook of the Hotel McAlpin, New York, is being forwarded to Crown Prince Leopold of Belgium and his bride, who was Princess Astrid of Sweden. The cake was awarded a diploma at the Hotel Men's association exhibit in New York. It required 400 eggs and 50 pounds of sugar. The picture shows Bender and his masterpiece.

the series at 8 o'clock this evening in the parish hall.

In addition to the regular prizes a door prize will be offered. At this time the beautiful dress set scarf and pillow which the Sisters of the Holy Name worked and donated, will be disposed of.

A cordial invitation is extended to all to attend by the following hostesses: Mrs. C. D. Thomas, Mrs. Eugene Eckerlin, Mrs. C. A. Suing, Mrs. Adam Engle and Anna and Minnie Sarrell.

### Jason Lee West Side Circle

The West Side circle of the Jason Lee Ladies' Aid society will meet at the home of Mrs. C. F. Loveland, 345 South 25th street, on Friday afternoon. The ladies of Central circle are invited to be guests. Those who expect to attend should transfer to the State street car. A short business meeting will be held at 2 o'clock.

Miss Gleeson Is Guest

Miss Marguerite Gleeson of Bend will be a guest in Salem until Thursday of Mrs. Sadie Keyt.

### Rapherian Club

Mrs. Grover Bellinger will entertain members of the Rapherian club on Thursday afternoon at her home at the tuberculosis hospital.

### First Methodist

Missionary Society

The Woman's Home Missionary society of the First Methodist

## EX-SCREEN STAR TO PLAY TONIGHT

Pauline Frederick Will Be Seen in "Lady Frederick" at Elsinore.

First nights of a play are always interesting and tonight's performance of Pauline Frederick at the Elsinore theater in W. Somerset Maugham's comedy, "Lady Frederick" will be doubly so, as this will be the only appearance of Miss Frederick in this city, but it will also mark the return of the beautiful star to the field of light comedy. It was in this field that Miss Frederick first made her success. While she is always artistic and delightful in her performances, the drab heroines that she played in "The Lady" and in "Madame X" are further from her personality and her real self. "Lady Frederick" is a story of Monte Carlo.

At the Hotel Splendide, we find a group of British aristocrats spending the winter and incidentally their money at the gaming tables. The central figure of the group is Lady Frederick Berolles, a fascinating Irish peeress, whose extravagances have plunged her deeply in debt, but who is surrounded by a host of admirers and suitors. She has just one attachment, to a young man of immense wealth, but whose mother strongly opposes any idea of a match between the young widow and her son. Her efforts to besmirch the name of Lady Frederick, and the latter's brave fight to clear herself from some of the most dramatic episodes in the play. "Lady Frederick" is without a doubt, the masterpiece of W. Somerset Maugham. Written before his satire became tinged with venom, his humor is delightful.

The dialogue is replete with witty lines and epigrams. The story is interesting from beginning to end. Manager Smith has endeavored to give as fitting an interpretation of the play as possible and with that end in view has engaged a company of players who can portray British aristocrats well. Most of the actors are of the manor born. In the company are Charles Waldron, Lawrence Grant, Allen Connor, Olaf Hytten, Clark Gable, Charles Wellesly, Tudor Owen, Paul Fix, Maud Turner, Owen, Margaret Delamere, Ina Rorke and Nanette Valon.

Brush College Helpers

Mrs. H. M. Buell will entertain members of the Brush College Helpers tomorrow afternoon at her home.

Smith & Watkins for tire service at a lower cost. Vulcanizing and retreading, tube repairing. If you have tire trouble just call 44, Corner Court and High Sts. (\*)

Capital City Cooperative Creamery. Milk, cream, butter, milk. The Buttercup butter has no equal. Gold standard of perfection. 137 S. Com'l. Phone 299. (\*)

The Peerless Bakery, 170 N. Commercial, Sanitary, up to date. Prompt delivery. Bakers for those who appreciate the best. Increasing patrons tell the tale. (\*)

C. A. Luthy, Reliable jewelry store. What you are looking for in jewelry. Where a child can buy as safely as a man or woman. Repairing in all lines. (\*)

C. F. Brethaupt, Florist and decorator, 512 State. Phone 380. Flowers, bulbs, floral designs for all occasions. Pioneer and leader in Salem. (\*)

## YMCA Plans Open House for All Day January 1

The Salem YMCA is planning to hold an open house program on New Year's day, with all departments and classes taking part in the program. The program will last all day Saturday, Jan. 1. A symposium program, consisting of marches, apparatus work, and stunts by each gymnasium class, will be put on in the afternoon. There will be a big demonstration of all phases of the YMCA's work at the evening session, besides basketball and other games. The women and girls will hold a swimming and diving display in the pool.

Mrs. H. P. Stith, millinery. Most beautiful hats in Salem; all shapes and colors; full stock from which to make fine selections. Best quality. 333 State St. (\*)

Parker & Co., 444 S. Commercial. Don't fail to see Parker about repairing your car. Expert mechanics at your service. All work guaranteed. (\*)

## INDIANS MADE GOOD AMERICAN SOLDIERS

Captain Stacy Tells Kiwanis of Company He Commanded During War

Indians who served in the World war displayed all the qualities of a good soldier under fire, and could not be excelled in any way, Capt. J. K. Stacy of the Salem Indian school told members of the Kiwanis club at their weekly luncheon yesterday. Captain Stacy commanded a company of 256, all Indians, during the war.

There were 15,000 Indian soldiers, Captain Stacy said, all of whom served as volunteers. Indians were not subject to the draft. His own company of 256 national guardsmen before the war volunteered to a man.

"These soldiers stood more punishment than I thought a human being could," Captain Stacy said. "Only 17 out of the 256 in my company came back from France. That shows some of the suffering they went through. They still fight for this country as they did in the old pioneer days."

Have your favorite negative enlarged at Patton's Book Store by Møgaard, the artist. Kodak finishing in all its branches. Quality work only. (\*)

Bonesteel Motor Co., 474 S. Com'l, has the Dodge automobile for you. All steel body. Lasts a lifetime. Ask Dodge owners. They will tell you. (\*)

O. J. Hull Auto Top & Paint Co., Radiator, fender and body repairing. Artistic painting adds 100% to the appearance of your auto. 267 S. Commercial. (\*)

Roller skating at the Dreamland Rink, Tuesday, Friday and Saturday from 7:30 to 10:30 p. m. Ladies admitted free. Gentlemen 10c. Skating 25c. (\*)

## OPINION DIVIDED ON TUNNEY'S ACT

Violation of State Commission Rules Halts Stage Activities

NEW YORK, Nov. 30.—(AP)

A division of opinion developed in the state athletic commission today over the arrest of Gene Tunney for alleged use of a theater as an "unlicensed boxing club" in his Broadway vaudeville debut.

While Magistrate Silberman was adjourning the heavyweight champion's case to Thursday, William Muldoon, senior member of the board, and Commissioner George Brower, were squaring off against Chairman James A. Farley in a verbal skirmish over the commissioner's attitude. Both Muldoon and Brower contended that the commission had no right to interfere with the stage activities of Tunney, whose act includes two

Accustomed ornamental nursery stock, evergreens, rose bushes, fruit and shade trees at Peasey Bros. in season. We have our own nurseries. 178 S. Com'l.

Special as long as they last—body powder and bath salts only 69c. regular 75c each. These make wonderful Christmas presents. Crown Drug, 332 State. (\*)

one-minute rounds of sparring.

Muldoon revealed that he and Brower opposed action by the board on the ground that matter was one for the police and district attorney's office to investigate. A resolution was accordingly passed referring the question to District Attorney Abbot to "take such action as he deemed necessary."

Tunney's arrest was made after letters had been forwarded by Secretary Bert Stand on behalf of the commission to the theater and the police, setting forth that any sparring by Tunney would be in violation of the state boxing commission rules.

RULES AGAINST COMMISSION

The public service commission has no jurisdiction over private trucking but only public service contracts according to a judgment handed down yesterday in circuit court by Judge McMillan. The case was the Purple Truck Garage company against a public service commission, a commission being ordered interfering with the garage's way.

The Hamilton Furniture Company has added a toy department to their stock. Many new things in toys to gladden the hearts of the little folks. 340 Court St. (\*)



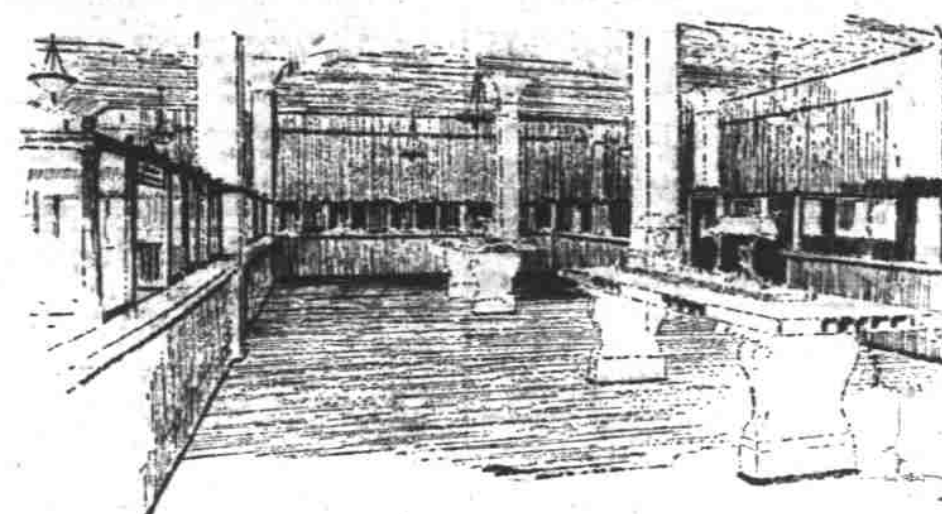
## STORAGE AND TRANSFER

Long and Shore Distance Hauling. Public and Private Storage. Fire Proof Building.

## FARMER'S WAREHOUSE

PAUL TRAGLIO, PROP.

Day Telephone 28 Night, Telephone 1267-W



## Reflected In The Community's Business

Anything that we can do to encourage better cows, cow testing associations, high quality pure bred sires or the formation of bull clubs will be a service that will not only add profit to the farmer's dairy herd, but will stimulate him to greater activity.

His increased success will then soon be reflected in the business of the community. And as the United States National's prime purpose is to further the prosperity of this section, we feel that all we can do should be done.

The  
United States  
National Bank  
Salem, Oregon.

## Good News Spreads Like Wildfire

All Salem and vicinity knows of the "Step Forward" taken by Kafoury Bros. in offering the advantages of a charge account to all worthy of credit. Many have already signified their appreciation by opening a charge account.

### Why Not You?

This is the most logical time, right before the holidays when your needs are the greatest and the advantage of a charge account is most convenient. Come—benefit by this new Kafoury Bros. Service. It is yours to enjoy, and makes your Christmas shopping pleasant.

Yours for a Greater Salem

Kafoury Bros.

## ROSTEIN & GREENBAUM

BEAUTIFUL RAYON BED SPREADS  
REDUCED PRICES  
\$5.00, \$5.65, \$5.75, \$5.90

PRETTY CRINKLED BED SPREADS  
78x108  
\$2.75

MIXED RAYON BED SPREADS  
78x108—Pretty Colors  
\$3.85

18x36 Fancy  
Turk Towels  
25c

20x40 Extra Heavy  
Turk Towels  
Regular 50c  
3 for \$1.00

Linen Huck Towels  
18x33  
48c

18x36 Double Textile  
Turk Towels  
25c

Pretty Fancy  
Turk Towels  
Extra Heavy—Large Sizes  
59c and 50c

Fine Linen Towels  
at  
89c, 75c and 65c

ALL LINENS  
FINE ALL LINEN TABLE CLOTH  
72 inches Wide—Yard  
\$3.00 also \$2.25  
Large Napkins to Match

LINEN LUNCH SETS  
36x36 Cloth and 4 Napkins  
Two Lots \$2.75 and \$1.75 a Set

LINEN LUNCH SETS  
Cloth 59x55, 1/2 dozen Napkins to Match  
\$4.50

18 Inch Art Linen, yard 69c; also 45c, 39c

36 Inch Fine Linen at \$1.35; also at \$1.15

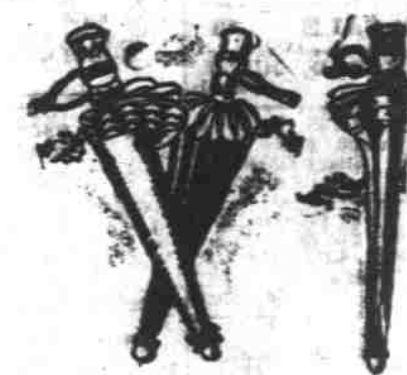
36 Inch Brown Linen at 85c a yard

Guest Toweling Fine Linen, yard 85c

246 NORTH COMMERCIAL STREET

## UMBRELLAS

For Personal  
Use or  
For Gifts



Right now we have a wonderful selection and we would suggest that you make your choice before the big rush starts.

Silk or mercerized ten-rib umbrellas with painted wood or amber handles, amber tips and fancy broders.

\$3.95

Silk umbrellas with ten or sixteen ribs, tipped with novelty ambers. Handles are painted or carved wood and carved amber.

\$5.95

Silk or mercerized sixteen-rib umbrellas with amber or carved wood handles, amber tips and ferrules.

\$4.95

Sixteen-rib umbrellas of silk with plain or fancy borders. Handles are hand decorated. Silken cords and colored tips add to their individuality.

\$6.95

Shipley's