

HENRY STEVENS CALMLY TELLS ALIBI TO COURT

(Continued from page 1.)
Alexander Simpson, and defense counsel.
Stevens' composure did not desert him, and a vigorous and a vigorous and searching cross-examination did not bring any change in his story of nights and days of fishing.
The defendant opened his testimony with the statement that he was testifying on his 57th birthday. Only once did his voice choke with emotion. In cross-examination the prosecutor had asked him if he had gone to look upon the body of his brother-in-

YOUR SICK CHILD IS CONSTIPATED! LOOK AT TONGUE

Hurry, Mother! Remove poisons from little stomach, liver, bowels
Give "California Fig Syrup" if cross, bilious or feverish



No matter what ails your child, a gentle, thorough laxative should always be the first treatment given.
If your little one is out-of-sorts, half-sick, isn't resting, eating and acting naturally—look, Mother! see if tongue is coated. This is a sure sign that the little stomach, liver and bowels are clogged with waste. When cross, irritable, feverish, stomach sour, breath bad or has stomach-ache, diarrhoea, sore throat, full of cold, give a teaspoonful of "California Fig Syrup" and in a few hours all the constipated poison, undigested food and sour bile gently moves out of the bowels without griping, and you have a well, playful child again.
Mothers can rest easy after giving this harmless, "fruity" laxative because it never fails to cleanse the little one's liver and bowels and sweeten the stomach, and they dearly love its pleasant taste. Full directions for babies, children of all ages and for grown-ups printed on each bottle.
Beware of counterfeit fig syrups. Ask your druggist for a bottle of "California Fig Syrup," then see that it is made by the "California Fig Syrup Company."—Adv.

Last Times Today 5 BIG ACTS ASSOCIATION VAUDEVILLE

Private Izzy Murphy with George Jesse, Patsy Ruth Miller, Vera Gordon, Nat Carr. Directed by LOY & BACON



The Talk of Salem! Come Early! Box Office Open 1:30 Show Starts VAUDEVILLE At 2:00 - 4:20 - 6:45 - 9:10 PICTURE At 3:00 - 5:20 - 7:45 - 10:15

THE ELSINORE

AYRES RECEIVES ILEANA WITH CAR AT NEW YORK

(Continued from page 1.)
background at the station but was summoned to Queen Marie's car. There, he said, he met Ileana and was asked to drive with her to Tuxedo.
He felt he could not refuse, he added, and so complied with the royal command.

NEW YORK, Nov. 20.—(AP)—Queen Marie of Rumania turned tonight to the restful quiet of Tuxedo, sixty miles north of New York, to end a 10,000 mile tour of the United States and Canada.
On Wednesday she will sail for Paris, taking back to Rumania mixed memories of an experience which was both delightful and exhausting, marked by bickerings among her friends, and which came to an unexpected end when Marie, worried by the illness of King Ferdinand, abandoned the journey at Louisville.

With Princess Ileana, Queen Marie arrived at Jersey City, N. J., and motored to the Tuxedo home of Charles E. Mitchell. There she will be joined on Monday afternoon by Prince Nicolas, who left the train near Cincinnati to make visits to Detroit and to Cleveland, two of many cities dropped from Marie's schedule when she closed her tour.
The journey, which took the royal party to 23 states and much of Canada, gave Marie her last bit of sightseeing today when she left her train at Martinsburg, W. Va., for a motor view of the Shenandoah valley around Charlestown, Winchester and Harpers Ferry.

Plan Union Meetings for Ladies' Societies

SILVERTON, Ore., Nov. 20.—(Special.)—Union plans were formulated for Trinity Ladies' Aid society and St. John's Aid society at a committee meeting held at St.

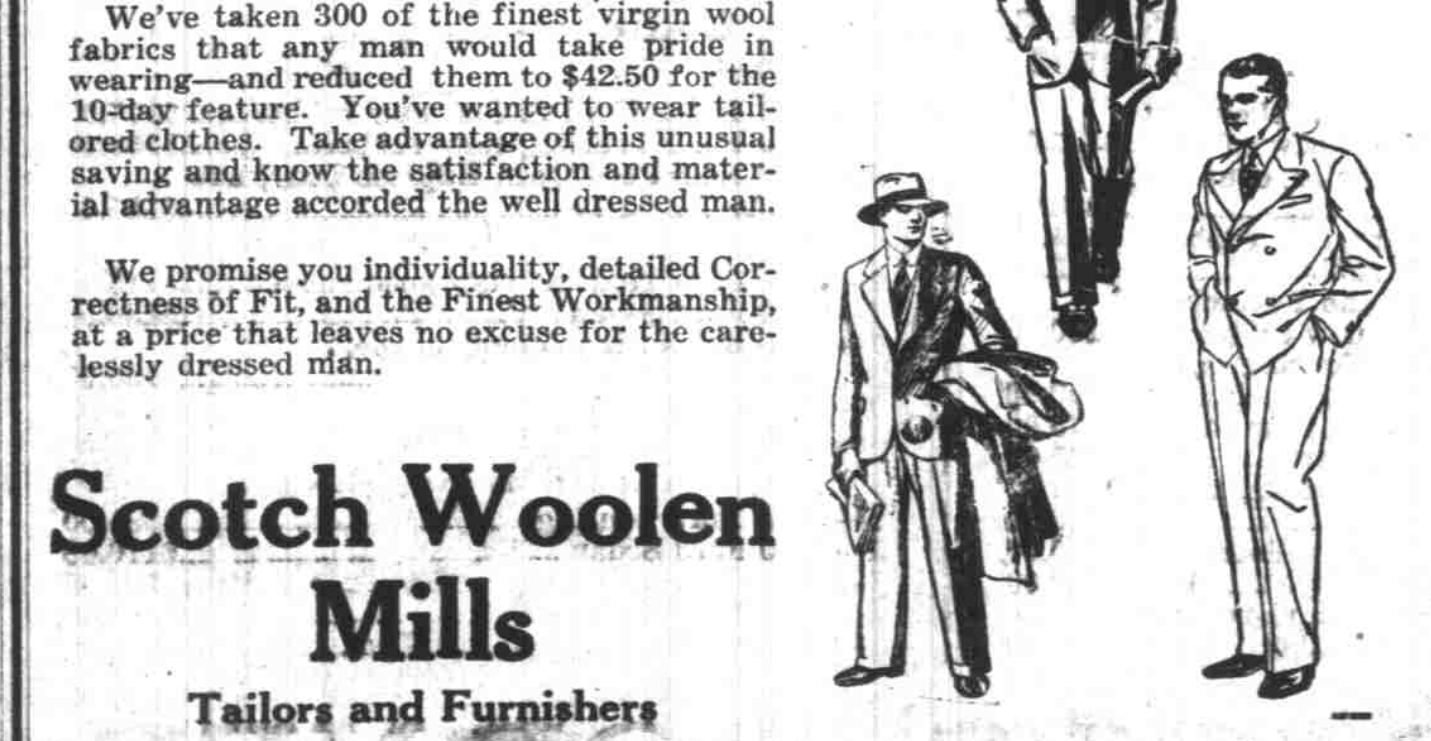
Bits For Breakfast
Now for sugar beets—
A 1000 acre minimum this year—
And as much more as the factory will take—
And an 8000 acreage and a factory in Salem next year.
This is the greatest opportunity this section ever had to get an industry going that will help every industry on the land and in the cities and towns.
Still sending 'em out; connecting the jobless with jobs; the Salem Y free employment bureau. Sent out 77 the past week.
They all come back. Mrs. R. L. Moore, mother of Mrs. Martin Fereshetian, is in Salem again, for the winter. This is her third stay in Salem. She went back to her home in Meadville, Pa., last year but seven months of snow last winter made her long for the green hills of the Willamette valley, where the flowers bloom in the open year through.
Nearly everybody has a theory on how to put the prune industry on its feet. Grow only the big prunes, and graft as many Noble French as there are grafting wood supplies to be had, and organize 100 per cent. That will do it.

H. L. Stiff Furniture Co., leaders in complete home furnishings, priced to make you the owner. The store that studies your every need and is ready to meet it, absolutely.

CLOTHES OF INDIVIDUALITY

300 FABRICS
From Our \$49 to \$55 Lines Reduced to **\$42.50**

Individuality—Detailed correctness of fit—fine workmanship. These are the standard by which to judge sale prices. And we invite the closest inspection.
We've taken 300 of the finest virgin wool fabrics that any man would take pride in wearing—and reduced them to \$42.50 for the 10-day feature. You've wanted to wear tailored clothes. Take advantage of this unusual saving and know the satisfaction and material advantage accorded the well dressed man.
We promise you individuality, detailed Correctness of Fit, and the Finest Workmanship, at a price that leaves no excuse for the carelessly dressed man.



Scotch Woolen Mills
Tailors and Furnishers
426 State Street W. W. EMMONS
USE OUR 12-PAYMENT PLAN

At the Theaters Today

The Elsinore—"Private Izzy Murphy" with George Jesse, Patsy Ruth Miller, Vera Gordon, Nat Carr and 5 big acts Association Vaudeville.
Oregon—William Boyd, Marguerite De La Motte, J. Farrell McDonald, Jack Hoxie, Mitchell Lewis, Gladys Brockwell in "The Last Frontier" by Courtney Riley Cooper.
Grand—Norma Talmadge, Ronald Colman in "Kiki."

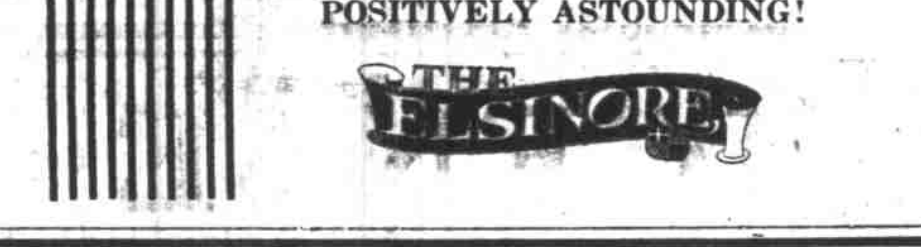
High's Capitol—Eastern Vaudeville and Feature Pictures.
Bligh Theatre—"Cold Nerve," a Western picture.
Luther college in the near future, and Richard Syring has been elected to Sigma Delta Chi, national journalistic fraternity at the University of Oregon.
PRUNE TROUBLES TO BE DISCUSSED (Continued from page 1.)
problem, and while he has not yet had time to completely solve it, he has found out several factors, among them why Oregon prunes are in trouble while California prunes have an established market value.
Prune packers and growers from Eugene, Corvallis, Dalles and Portland are expected to attend Monday's luncheon because of its great interest to all connected with the industry.
Buy at Director's and save. \$20 men's all wool suits \$9.95 in Director's Downstairs Store. \$2.50 slicker pants \$1.59; \$2.50 slicker coats \$1.59; 60c toe rubbers 19c.

MOTOR TO CORVALLIS
SILVERTON, Ore., Nov. 20.—(Special.)—In spite of the rain a number of Silvertontians motored to Corvallis to witness the Oregon OAC football game. Among those going were Dr. and Mrs. C. W. Keene, Dr. and Mrs. A. W. Simmons, John Gordon, Mr. and Mrs. John Larsen, Robert Seeman.
The Opera House Drug Store. Service, quality, low prices, friendship give increasing patronage. Old customers advise friends to trade here. High and Court. (*)

Silverton Graduates Gaining Prominence
SILVERTON, Nov. 20.—(Special.)—Graduates of Silverton schools are gaining prominence at universities and colleges, according to reports reaching Silverton. Kathryn Lemmon, daughter of Mr. and Mrs. LeRoy Lemmon, has been elected to the girls' glee club at Pacific university. Louise Henriksen, Esther Towe and Ingeborg Goplerud are taking solo parts in an opera to be given at Pacific

Plan Union Meetings for Ladies' Societies
SILVERTON, Ore., Nov. 20.—(Special.)—Union plans were formulated for Trinity Ladies' Aid society and St. John's Aid society at a committee meeting held at St.

A MOST UNUSUAL PHOTOPLAY!
The Night Cry
WITH **RIN-TIN-TIN**
TOMORROW AND TUESDAY
POSITIVELY ASTOUNDING!



LISTEN IN

SUNDAY
10:23-12:00—KGW (401). Church services.
6:00-7:00—KFWV (212). Dinner concert by Misha Pella orchestra.
6:00-10:00—KOIN (219). Dinner concert by George Ql' sene, concert organist; 7:50, church services; 9, Misha Pella orchestra in sacred concert.
7:30-10:00—KGW. Church services; 9, Chevrolet Little Symphony orchestra.
6:00—KFO San Francisco (428). Lind's orchestra; 6:30, Town Organ; 8:35, Cyra Trobbe's orchestra; 8:35, Seiger's orchestra.
6:00—KHQ Spokane (394). Mann Bros. orchestra; 7:30, church services; 9, International Bible students.
6:00—KTBI Los Angeles (294). Radio vesper services; 7:15, regular church services.
6:20—KFI Los Angeles (467). Nightly delights; 6:45, music chat and Father Ricard's sun spot weather forecast; 7, Smith's dance orchestra; 8, Aeolian organ recital by Alex. Heilly; 9, Venetian's dance orchestra; 10, Hennessy's orchestra, Dolly MacDonald, soloist, Van O'Malley, pianist.
6:30—KGO, Oakland (361). Ben's Little Symphony orchestra; 7:30, weather report; 7:35, church services, Rosalie De Land, organist; 9, Ben's Little Symphony orchestra.
6:30—KNX, Hollywood (327). Church services; 7, church services; 8, Circle orchestra, Fred Scholl, organist; 9, feature program.
6:30—KMTB, Hollywood (379). Leila Castberg's half hour; 7, Miller's concert orchestra; 8, KMTB's concert period.
6:45—KFSG, Los Angeles (275). Musical hour, temple band and choir, Thomas Johnson, harpist; 8, revival service by Aimee McPherson; 10, Esther Fricke, organist.
7:00—KLB, Los Angeles (405). Church services; 8, news, Frederick MacMurray, viola, Orpheus Male Quartet; Mona Content, concert pianist, others.

ADULTS 25c CHILDREN 10c
Any One Child FREE
If Accompanied by ONE ADULT

OREGON
Norma Talmadge in KIKI
RONALD COLMAN
Last Times Today **GRAND** Formerly Heilig Theatre

WILSON BROTHERS HABERDASHERY

CORNS
Lift Off—No Pain!
FREEZONE
Doesn't hurt one bit! Drop a little "Freezone" on an aching corn, instantly that corn stops hurting, then shortly you lift it right off with fingers.
Your druggist sells a tiny bottle of "Freezone" for a few cents, sufficient to remove every hard corn, soft corn, or corn between the toes, and the foot calluses, without soreness or irritation.—Adv.

ADULTS 25c CHILDREN 10c
Any One Child FREE
If Accompanied by ONE ADULT
Norma Talmadge in KIKI
RONALD COLMAN
Last Times Today **GRAND** Formerly Heilig Theatre
A. A. Clothing Co. Masonic Temple
Priced at \$1.00 to \$3.50

Every Piano Must Be Sold

We bought the piano stock of the defunct Carnes Music Co. of Pendleton and we are offering the entire stock at drastic reductions—together with our used and non-stock pianos.

	\$195 Buys this Adam Schoof Terms \$7 down \$7 a month	
	\$225 Buys this Cable Piano \$8 a month	
\$525 New Player Pianos	\$345 New Pianos	\$425 New Pianos
\$365	\$278	\$325

CLOSING OUT ALL UKULELAS—\$2.25 Uke 95c, \$4.50 Uke \$1.45, \$7 Uke \$2.75

Gulbransen Pianos \$295, \$350, \$440. Buy now and save money. New Viva Tonal Phonographs \$90, \$115, \$300. Radios complete \$65, \$90 up.

The Portland Music Co.
L. Lunsford, Mgr. 355 North High Street
We Sell On Very Easy Terms