

THREE TRAINLOADS OF WASHERS SENT

Maytag Sets Record With Three Solid Loads of New Machines

On September 25th three solid trainloads of Maytag washers were shipped from the factory at Newton, Iowa, to the west coast.

Two of the trainloads are assigned to the Schlusser company Maytag distributors for California. One trainload is assigned to the Maytag Pacific, Inc., with headquarters in Portland, Oregon.

This is the third trainload for this latter company within the past 60 days, two solid trainloads having been received and sold by them in a 30-day period.

The Maytag company through its wonderful sales and dealers organizations has built up a remarkable demand for the Maytag washer not only in the territories mentioned above but throughout the whole country.

Trainload shipments are being sent into every section of the country. Thousands of washers in a single shipment. Orders that represent a money value in the millions!

In spite of the fact that there are close to a hundred electric washing machines on the market, the Maytag company has been the dominating figure in its field for some years past.

While the total sales of Maytag washers amounted to but a single million dollars in 1920, the total sales for 1925 had reached the unprecedented figure of \$35,000,000.

Today the Maytag company is credited with selling more than one-third of all electric washing machines sold. This great demand for the Maytag washer has made necessary the building of additional factory buildings to what was already the largest washing machine factory in the world.

The present daily production of Maytag washers—1250 washers—has proved insufficient to meet the demand. New buildings rapidly nearing completion, including one of the largest aluminum foundries in the world, will shortly raise the present production to 1600 washers a day.

The Maytag company was founded more than thirty years ago by F. L. Maytag, the present chairman of the board of directors. Mr. Maytag was the originator of the self-sale plan whereby Maytag Washers are sold in the prospect's home instead of upon the floor of the dealer's store.

We have the hat you want at the price you want to pay. Many new patterns and felt hats come in daily. The Vanity Hat Shop, the place to buy the Beth Hat.

H. L. Stiff Furniture Co., leaders in complete home furnishings, priced to make you the owner. The store that studies you—every need and is ready to meet it, absolutely.

The Pontiac Six is out-selling because it is Built to Outlast. It displays unflinching sturdiness and dependability. See it on display at Vick Bros.

Nash Furniture Co. takes the lead with low prices on chairs, rockers, tables, wood and steel beds, springs, mattresses. Saves you 25%. 219 N. Com'l.

General Motors sold 835,749 automobiles last year.

Auto Down Comes the Cost of Travel

Ride the New Way at 1¢ per Mile

YOU save money every mile when you ride a Harley-Davidson Single—the new-type motorcycle that travels 80 miles on a gallon.

Safe, comfortable, enjoyable. Nearly self-balancing, with simple controls, powerful motor and 3-speed transmission. Park in 2x8 ft. space. Easy to buy. Ask about our convenient Pay-As-You-Ride Plan.



The HARLEY-DAVIDSON [New-Type Motorcycle] Single

Harry W. Scott "The Cycle Man"

147 S. Commercial Street Phone 303

When It Rains, Use Chains



Courtesy, National Safety Council.

While some motorists feel that chains no longer are necessary on automobiles, careful drivers will play safe by using these safeguards in wet and slippery weather.

ANTI-SKID SAFETY IN COLUMBIA TIRE

Company Advises Careful Rubber Inspection as Rains Start in

With the approach of rain, it is a good plan to size up your tire equipment and remove tires that have worn down to a perfectly smooth surface.

Nearly every motorist appreciates that a smooth tire is a mighty dangerous proposition on a wet, slippery pavement, and that self-protection and a due regard for the other fellow demands a rugged, non-skid tread on all four tires during the rainy season.

According to Alfred A. Aya, vice president and general sales manager of the Columbia Tire Corporation, makers of CTC tires and tubes, a recent tabulation of accident causes in wet weather indicates that thousands of avoidable accidents are due to smooth treads on slippery pavements.

CTC tires are scientifically constructed to afford not only the maximum mileage, but the tread design is of such a nature as to provide the highest degree of traction on wet roads and pavements.

PAIGE ANNOUNCES NEW FOUR DOOR OFFERING

(Continued from page 1)

the rear doors have shirred pockets, with sloping tops for convenient access.

Equipment is unusually complete. There are two corner lights, two smoking sets and entrance grips in the tonneau. Instruments are arranged in a new ornamental grouping, indirectly lighted. They include an electric clock and gasoline gauge.

Other equipment includes four shock absorbers, coincidental ignition and steering lock, automatic windshield wiper, rear view mirror, combination stop and tail light, lock in right front door, remote control door handles, cowl ventilator, light control in center of steering wheel, integral sun visor and cowl lights.

Tires are 31x5.25. Artillery type wood wheels are standard, but steel wheels may be obtained at slightly higher prices.

WOVEN ROCKS That's what you get when you use EMSCO BRAKE LINING

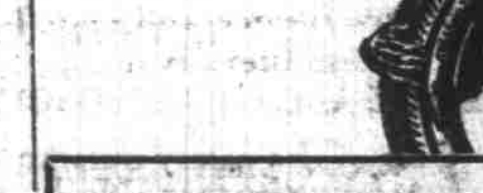
Insist on the genuine. Any dealer can supply you

W. E. BURNS—DAN BURNS (Not Brothers—The Same Man)

High Street at Ferry Salem, Oregon

ARE YOUR TIRES WEARING "SPOTTY"?

Going onto the wet roads with the cord exposed through "spots" shortens the life of your tire to just a few more weeks. We can retread it and give you another 10,000 miles or so.



Phone 313

Miller Tire Service Co.

"RUSS SMITH" 127 South Commercial Street Phone 513

"We Love to Change a Tire"

147 S. Commercial Street Phone 303

CHRISTIAN SCIENCE SERMON GIVEN HERE

(Continued From Section 1)

answers, "God is incorporeal, divine, supreme, infinite Mind, Spirit, Soul, Principle, Life, Truth, Love." Words cannot define God more clearly, for as we take each term, analyze its meaning, examine it prayerfully, we find that we have a knowable, provable God, a first Cause from which must proceed all that is real and eternal.

Christian Science makes clear to us that God is "the same yesterday, and today, and forever."

It also makes clear to us the availability of this changeless God who is infinite good, this first Cause who is the maker, sustainer, and ruler of the universe, forever the same, bestowing all good upon His perfect spiritual creature.

Surely you will agree with me that if this first Cause or God is changeless, always the same as the Bible states, He could not be corporeal or material in the slightest degree. An intelligent creative Cause could not proceed from or include non-intelligent matter. Does it not follow then, without question, that God is incorporeal, that is, without body, form, or outline?

God is infinite, that is, entirely complete within Himself. And Christian Science teaches that since He is within Himself divine, then, He includes only that which is divine; divine strength, wisdom, health, happiness; all that is good and harmonious. He is the source of all, and this all is divine. He is self-existent and the only true Being. The Bible tells us of the infinite wisdom and goodness of God. Christian Science teaches that God is supreme, highest in place, power, and authority; that He is supreme in glory, supreme in love, and that because of this He is incorporeal, divinely infinite, supreme, and cannot be limited in power, capacity, or knowledge. God is ever available to you and to me and all mankind.

Paul said in Philippians, "Let this mind be in you, which was also in Christ Jesus." In the gospel of John we read that Jesus said, "I and my Father are one."

Does it not follow, therefore, that this oneness can only be expressed spiritually by reflecting the Mind which is Spirit? The light thrown upon the Scriptures through the study of Christian Science reveals and makes clear to human perception the unity of God and Christ, the oneness or divine sonship, that the Mind which was in Christ Jesus is God, the only intelligence of the universe.

In the Scriptures we have over-

whelming evidence that Jesus gave full proof of his sonship by doing the works of his Father, by having divine Mind govern His life and affections. It was this Mind which endowed Him with the ability to heal the sick and raise the dead. This showed by example that the truth He taught was provable and sufficient at all times and under all circumstances. To-day, through the revelation of Christian Science, this same truth is made available for all mankind in meeting every human need. Jesus said, "God is a Spirit; and they that worship him must worship him in spirit and in truth."

To doubt many in this audience can testify with me, and to our testimonies it would be possible to add the testimonies of thousands upon thousands, that Christian Science has taught them, just as it can teach all humanity, how to worship God aright, how to love and adore Him as a God of truth, unflinching in every hour of need, supplying all good to His children. God is Spirit, the only animating, vitalizing power of the universe.

Christian Science also tells us that spiritual man, the image and likeness of Spirit, God, forever reflects all the qualities of Spirit. These qualities cannot be lost or impeded, because being spiritual and God-given, they will remain perfect, and indestructible throughout all time.

Must it not be true if God is infinite, immutable, forever complete within Himself, that God is Soul, the divine substance and actuating Cause of all being? Is it not clear, if He is the only Cause, that matter has neither substance, power, nor intelligence to create, accomplish, or to destroy?

Does it not follow, therefore, that the source, cause, and basis of all that really exists is God, the all-inclusive, infinite, divine Mind or Principle from which all good proceeds? Moses, the great lawgiver, said, "He is thy life." Let us analyze this statement. The Bible tells us that God created all things. Therefore it must be that He is the only Life or source of our existence, is our Father, Mother, our All-in-all, the sole Creator of Man and the universe. Christian Science has come to teach all mankind how to understand the great truth, and how to lay hold of life eternal.

Moses also said, He is "God of truth, . . . just and right is he." As Truth must be exact, unchangeable, always the same, we see that God is all-inclusive wisdom, eternal Truth.

"God is love." This is told us in the gospel of John. Perhaps another word in the English language defines God so clearly or brings Him so near to each one

of us, for Love has touched all of our lives in some way at some time. When we consider the devotion, the unselfish love of a good, loving mother, we realize how much greater must be the love of our Father, Mother, God, tenderly caring for His children, uncounted millions, feeding, nourishing, and clothing them in all the beauty of holiness.

To gain the faintest understanding of God as Father, Mother, Life, Truth, and Love, and man as His perfect reflection, will give to all hope and assurance. It will fill empty hearts with unspeakable joy and courage, and make them glow with tender love and gratitude.

MAN

Now the question is, How may we understand man? We need only turn to the Bible to learn the truth about man. In the first chapter of Genesis we read, "God created man in his own image, in the image of God created he him;" and that God gave man dominion over all things. Reasoning from this true basis will disclose to you, and to all who seek salvation, that everything proceeding from God must be God-like, good, complete, and perfect. The real man, the man of God's creating, must forever manifest all the eternal spiritual qualities of his Maker, and can never be deprived of this rich inheritance.

In the Christian Science textbook on page 476 Mrs. Eddy writes, "Jesus beheld in Science the perfect man, who appeared to him where shining mortal man appears to mortals. In this perfect man the Savior saw God's own likeness, and this correct view of man healed the sick." Let

us see what is the correct view of man. First of all, the Bible declares that God created man in the image of Himself. Then if man is created in the image and likeness of God, he reflects all of God's qualities. Man must reflect incorporeality, for God is incorporeal. God has not one ma-

terial quality, therefore man can not reflect matter or materiality. God is Mind. Man, then, as God's idea of reflection, expresses all ways, for God is infinite, this one Mind. Therefore, man reflects all intelligence, has all wisdom, and is only capable of judging wisely.

(Continued on page 4.)

terial quality, therefore man can not reflect matter or materiality. God is Mind. Man, then, as God's idea of reflection, expresses all ways, for God is infinite, this one Mind. Therefore, man reflects all intelligence, has all wisdom, and is only capable of judging wisely.

(Continued on page 4.)

"KELP ORE" BATHS

Trade Mark Registered H. H. BROOTEN, PROPRIETOR

"Kelp Ore" was discovered by H. H. Brooten, who has been developing and using it for twenty years in the treatment of many of the diseases considered incurable before the discovery of the wonderful "Kelp Ore"—Nature's gift from the Ocean!

Amazing Results Obtained in the Treatment of Diabetes, Kidney and Bladder Disorders, Eczema, Rheumatism, Digestive Troubles, Cancer, High Blood Pressure, Hardening of the Arteries, Etc.

We have the only genuine Magnesian Eocene water known in the world. It is free for all to drink at the Sanitarium. Hundreds of people in all walks of life will gladly testify to the wonderful results obtained by them from sickness and suffering through the use of "Kelp Ore." Write for booklet.

TO REACH THE BATHS Tillamook Highway to Hebo, Roseburg Highway south to Pacific City Road, 1 mile from main highway turn left at signboard, "To H. H. Brooten Baths." By stage to Hebo and phone Baths for bus.

COTTAGES FOR RENT Store, bed springs and electric lights furnished. Ideal location with a wonderful view of Neskaneum Bay where Boyter Clams, Flounders and Salmon fishing abound. One mile from the Ocean.

Address H. H. BROOTEN'S "KELP ORE" BATHS, Cloverdale, Oregon. If your druggist cannot supply you, write direct to H. H. Brooten, Cloverdale, Ore.

TIRES The Bottom Has Fallen out of Prices

BUY TODAY--These prices are good for one week only, starting Friday, Oct. 15

Table listing tire sizes and prices: 30x3 1/2 Cl. Standard Cord \$ 7.95, 30x3 1/2 Cl. Oversize Cord \$ 8.95, 31x4 S. S. Oversize Cord \$13.65, 32x4 S. S. Oversize Cord \$14.95, 33x4 S. S. Oversize Cord \$15.55, 34x4 S. S. Oversize Cord \$16.95, 32x4 1/2 S. S. Oversize Cord \$19.95, 33x4 1/2 S. S. Oversize Cord \$20.95, 29x4.40 Full Size Balloon \$ 9.95, 29x4.75 Full Size Balloon \$13.65, 29x4.95 Full Size Balloon \$13.95, 30x4.95 Full Size Balloon \$14.65, 30x5.25 Full Size Balloon \$15.95, 31x5.25 Full Size Balloon \$16.95, 30x5.77 Full Size Balloon \$19.95, 33x6.00 Full Size Balloon \$20.95

Smith & Watkins N. W. COR. COURT AND HIGH STS. SALEM, ORE.

WHO WILL TAKE AN ORPHAN?

More than 500 makes of automobiles have become "orphans" since the industry started

The list of "orphans" is still growing. Some cars called "standard makes" last year are now "orphans."

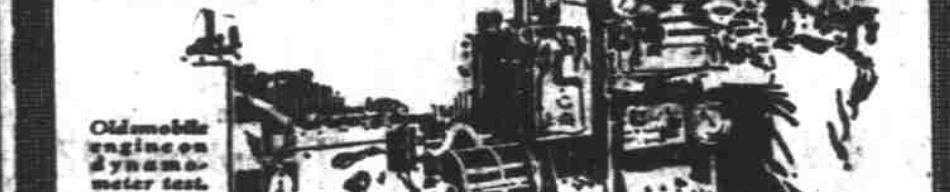
IS YOUR'S ONE? Make sure that the car you buy will not join the "orphan" list

BUY THE GREATEST BUICK EVER BUILT Leading the Industry

OTTO J. WILSON 388 North Commercial Street

Get Your Auto Body and Top Ready. With our new equipment and expert workmen we are in a position to do top and body work quicker and consequently at less cost than before. Our new equipment permits us to correctly do any body top rebuilding or repair. O. J. HULL AUTO TOP & PAINT CO. 268 South Commercial Street Phone 578

STRICTEST STANDARDS RIGIDLY MAINTAINED



Unbiased measurement of true worth on General Motors Proving Ground anticipates and duplicates, in advance, every condition of owner use . . . lays down the laws that secure owner satisfaction. In every process of manufacture, split-hair measurements mark the code of standards.

And this exactness yields that uniform merit which raises Oldsmobile so far above its price. Oldsmobile performance, endurance, comfort and beauty, are founded . . . first and foremost . . . on strictest standards, rigidly maintained!

Capitol Motors, Inc. 350 North High Street Telephone 2125

OLDSMOBILE