

New Jewetts Demand Attention as Models Reveal Increased Beauty

SIMPLE RULE AIDS NEW AUTO BUYERS

Modern Engineering Sets New Standards to Be Considered

A few simple rules to follow will make it easy for the buyer of a new car today to get a modernly engineered product.

Within the past few months there have been many developments in motor car construction which are far in advance of improvements made heretofore.

These features show up so plainly in the modern engineered car that the buyer has little chance to go wrong if he uses his head and his eyes.

Modernly engineered cars are low, the roof line is closer to the ground than has been the case at any time before.

Compactness without the sacrifice of usable room is another feature of the modernly engineered car.

Check up on the developed horsepower as compared with the rated horsepower. The modernly engineered power plant develops a brake horsepower of far in excess of its rated horsepower.

In the six-cylinder field, be sure to check the developed horsepower against the rated power. Here again, your choice should be centered on the car with the greatest excess of developed power over rated power.

The drive system also comes in for attention. Modern engineering

DAN BURNS CITES CAR IMPROVEMENT

New Holly Carburetor and Vaporizer Included on Ford Autos

There is a marked tendency among all car manufacturers to improve constantly the running qualities of their cars.

A new improvement that has just come on the market is the Holly Vaporizer.

It is designed to take care of the low grade gasoline that we are now getting. By means of a hot plate, the fuel is vaporized before it goes into the motor.

Dan Burns, better known as "Not Brothers," spent the last part of the week in Portland

OVERLAND WHIPPET GAS MILEAGE HIGH

Sedan Averages 40.3 Miles Per Hour on Bear Creek Canyon Road

An Overland Whippet, the new European type light car, recently introduced by Willys-Overland, has established an amazing speed record over the rugged course of Lookout Mountain and Bear Creek Canyon making a 58-mile circuit from Know Court and return in 1 hour 26 minutes and 40 seconds, thus setting up an astounding average of 40.3 miles per hour.

With George Dyer of the retail division of the Willys-Overland Denver Branch at the wheel the test was started at 4-44 a. m. and the finish came at 6-10-40.

The maximum speed attained during the trip was 65 miles an hour, the average speed maintained between Golden and Wildcat Point was 24 miles an hour and the descent through Bear Creek Canyon was made at the rate of 45 miles an hour.

These are conspicuous figures for a light car and bear out the contention of the Whippet engineers that this European type car is an amazing performer.

Bear Creek Canyon is full of curves and to take the run at an average of 45 miles an hour is to demonstrate a road ability which is unequalled in any other type of motor car.

The climb up Lookout is a stiff one and calls for a motor with regular power, to make it. The Whippet time of 15 minutes for the climb shows what the European type of power plant means to the driver of a light car.

Here is the first practical demonstration that has been afforded to Denver motorists to see what the Whippet really will do. It more than bears out the statements of the manufacturers that it has big car performance ability on the very minimum of light car operating expense.

ASSOCIATED OIL PRODUCTION HIGH

Affiliated Companies Produce 1,546,144 Barrels During August

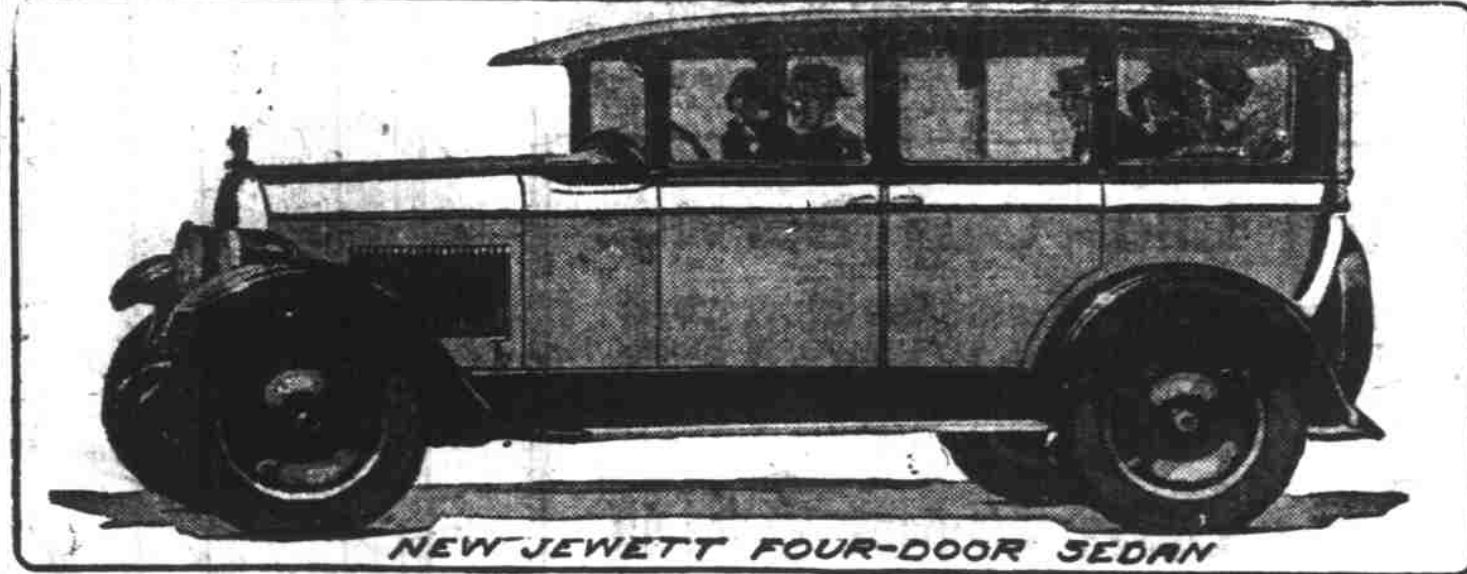
Associated Oil Company, subsidiary of Tide Water Associated Oil Company, reports a grand total production with affiliated companies for August of 1,546,144 barrels of crude oil, an increase of 8,997 over July.

The production report is compiled according to the various fields in which the company operates and it is especially interesting in showing the productivity of the various fields.

Salvaged Lumber Builds Huge Stadium in Texas

SAN ANTONIO, Tex.—(AP)—Material salvaged from the barracks of old Camp Travis near Fort Sam Houston, where thousands of troops trained during the war, is being used to construct the Fort Sam Houston Hippodrome, the largest stadium in the world.

All-De-Luxe Line of Beautiful New Jewetts Is Announced Today



NEW JEWETT FOUR-DOOR SEDAN



4-DOOR INTERIOR

BEAUTY DOMINATES IMPROVED JEWETT

All Models De Luxe in Finish and Fittings Under Page Policy

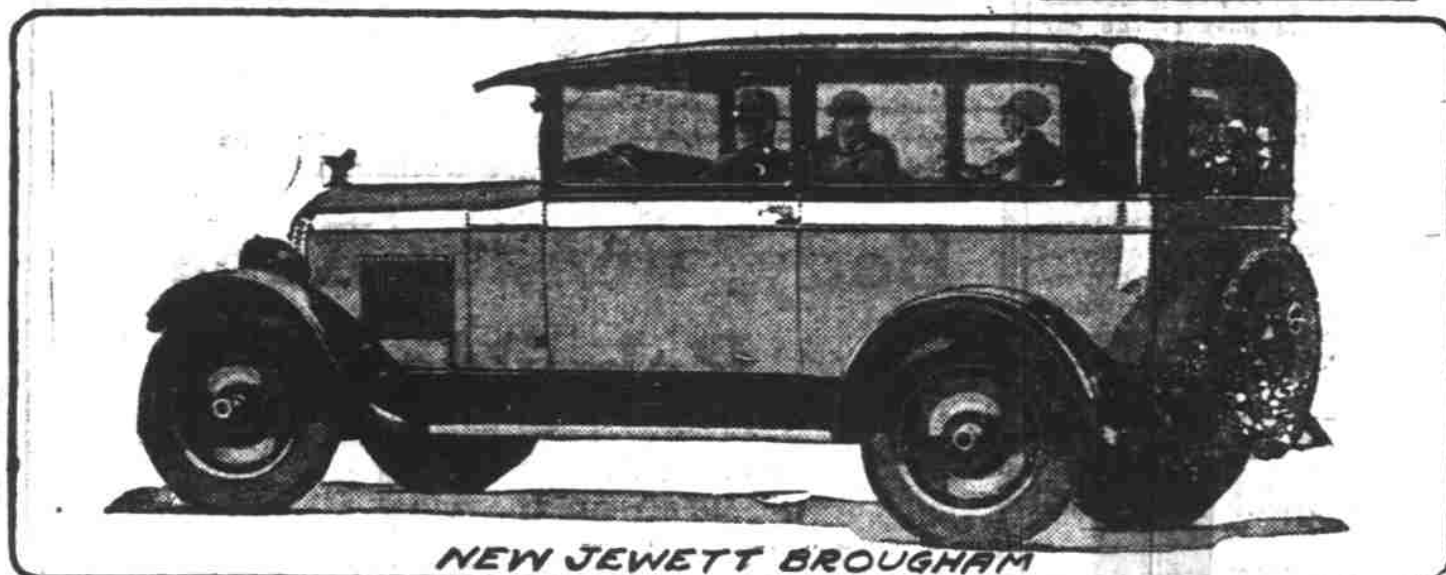
A completely changed line of Jewetts, with beauty as their dominant characteristic, is presented today by the Paige-Detroit Motor Car Company, which describes them as "the second most beautiful car in America."

Emphasis is laid upon good looks in every item of the new Jewett's ensemble. Each model carries color, trim, finish and appointments that formerly would have rated it as "de luxe".

A four-door sedan, a type not previously included in the line, has been added, and is regarded as the leader. The popular brougham is, of course, continued, but with changes that clearly set it apart from the former model.

Both the brougham and the four-door sedan are unusually graceful, the straight line effect of the preceding models having been eliminated entirely. The new bodies designed expressly to achieve beauty, and to be fully up to the standards that have always been attained by the costlier Paige cars in this respect.

The new line also reveals several important mechanical improvements, chief of which is the increase in size and power of the engine and the adoption of the air cleaner as standard equipment.



NEW JEWETT BROUGHAM

SMART LINES AND LUXURIOUS INTERIORS DISTINGUISH LATEST JEWETTS

Describing them as "the second most beautiful car in America," the makers of the Paige today announce an entirely new line of Jewetts, with a handsome four-door sedan as the leader.

In concentrating its production on models de luxe, the Paige company announces, it is meeting the public demand as determined by the company's own experience in recent years.

The new four-door sedan is lacquered in marine blue, with belt molding and in fawn gray above, with stripes in apple green.

The brougham is finished in light beige lacquer below the belt molding and in fawn gray above, with stripes in apple green.

The interiors of both closed cars also have been greatly improved to be in harmony with the handsome exteriors.

The new Jewett engine has a bore of 2 3/4 inches and a stroke of 4 1/4 inches, the bore having been increased one-eighth inch.

The harmonious interior trim is particularly noteworthy, being carried out in walnut finish throughout.

The top wall to the front of the windshield.

An AC air-cleaner is standard equipment on the new engine. It is mounted vertically in front of the carburetor.

Instead of the plain die-cast main bearings used previously, the new engine has bronze-backed main bearings of the interchangeable type, as used in the larger Paige engine, with a great gain in accessibility and servicing operations.

Tire size has been increased from 29x4.74 to 30x5.25, for better wear and riding qualities, with incidental improvement in the appearance of the car, augmented by the lower running boards, which have been dropped 1 1/2 inches.

DOWN THE ROAD—



WHEN THE WIFE DECIDES TO KEEP ON GOING WHILE THE GOING IS GOOD.

Carrying Things Too Far

MILLER PERFECTS RE-TREAD METHOD

Premature Tread Wear No Longer Spells Junk Heap for Rubber

AKRON, Ohio, September 16, 1926.—Premature tread no longer spells "bone-yard" to otherwise serviceable tires, says Russ Smith, Salem agent. A new discovery in the Miller tire laboratories at Akron makes possible for the first time in tire history the satisfactory of a road-worn tire tread with a new one.

For years past the effort to lengthen tire life by retreading tires has been one of doubtful value. Retreading molds available to the vulcanizers cured the retreading rubber, known to the trade as "Camelback," in three sections.

Pressure caused the rubber to force its way out of the mold at the ends where it joined other uncured rubber. The motorist who has seen a tire retreaded will have noticed that it formed bulges in three points along the tire which had to be cut away.

The new Camelback does not yield to pressure in the retreader's mold. It is not forced out of the mold ends and cures smoothly and evenly, giving as satisfactory wear as in the original tread.

The new compound, which has been withheld from the market for an extended period during which its claims were tested and proven, is not intended for use on tires whose carcasses are "shot".

UNION OIL OPENS ALASKAN STATIONS

Four New Distributing Points Announced by California Group

Completing negotiations that have been under way for some time, Union Oil company of California today announced that it has opened four marketing stations in Alaska.

The new stations will dispense gasoline, distillate, kerosene and diesel in bulk; lubricating oils and greases in packages.

The refined oil products distributed through these new depots will be supplied by the Union Oil refineries in California and will be transported in the company's own tankers.

Simultaneously it was announced by the Union Oil sales officials that the Union Oil company of Canada, Ltd., a subsidiary corporation, has opened for business, eleven marketing stations in British Columbia.

NASH SALES CLIP PRECEDING TOTAL

First Eight Months Transactions Pass Entire 1926 Business

The month of August, according to E. H. McCarty, Nash General Sales Manager swept total Nash sales and production for the first eight months of 1926 to a figure considerably in excess of the total sales and production achieved by the entire year of 1925, which was the banner Nash year in point of business heretofore.

Furthermore, September will again take up the continuous stream of record-breaking Nash sales months which were interrupted in November, 1925 due to arbitrary retardation of production to bring new models into manufacture, and again in July and August of this year in order to allow us to introduce the new Light Six Series, new Special Six Series and new Advanced Six Series.

In fact, September will be the 25th consecutive month—with the three exceptions noted above—that Nash sales have surpassed the high mark set by the same month of the previous year.

With all three new series now powered with the 7-bearing crankshaft motor Nash today occupies the unique position of being the only large manufacturer in the world with all models powered by a 7-bearing crankshaft motor which engineers regard as the ultra modern six-cylinder motor design because of the vastly superior smoothness and quietness of its performance.

At the time of our recent new model announcements stocks in our dealers' hands were at an extremely low point and this in conjunction with the great reception accorded the new cars makes it certain that Nash will be hard-pressed to meet the rising demand even though production is being advanced as fast as possible.

RADIO RECEPTION TURNS ON GROUNDS

Joe Williams, Willard Expert, Gives Sound Advice for Amateurs

Radio has familiarized a lot of people with the fact that an electrical circuit is not complete without a ground connection.

In the cars of today, it has become almost universal in wiring the car to use the single wire system, that is to use the frame of the car as one side of the circuit, grounding the generator, the starting motor and the battery.

The ground connection sometimes comes loose in traffic, causing the motor to stall.

Michigan University Has Course in Real Estate

ANN ARBOR, Mich.—(AP)—Fundamentals of the real estate business will become a matter of student investigation in the School of Business Administration of the University of Michigan this fall.