

GREATEST BUICK EVER BUILT OUT

Vibrationless Beyond Belief
Is Claim of Factory
Managers

Vibrationless beyond belief—that is the outstanding fact about the greatest Buick ever built. It is a fact simply expressed in three words—but its full meaning can be appreciated only after you have experienced for yourself the wonderful lack of vibration at all speeds, and have marveled at the absence of every kind of noise. Here, at last, is transportation in which you forget the vehicle and experience only the delight of smooth, effortless travel.

There is no secret about how this newest approach to motor car perfection has been achieved by Buick. It is not due to one or two clever devices. It is the result of the further development of principles that Buick has followed from the beginning. The basis of this wonderful performance—vibrationless beyond belief—is the Buick valve-in-head engine. Already incomparably smooth in operation, it has been made still more so by the addition of counterweights and a torsion balance to the crankshaft. At the same time the piston weight has been greatly reduced, but cast iron pistons are retained so that none of the wearing quality for which they have always been noted is sacrificed.

Not content with these steps alone, Buick engineers have supported the engine in rubber mountings. This completely insulates the engine from the frame and any slight noise that might exist in the power plant cannot be transmitted to the body through the frame. At the same time particular attention has been paid to the muffler. Back pressure has been reduced and exhaust has been made extremely quiet.

Still another step—in providing performance vibrationless beyond belief—is seen in refinements of the transmission. Full involute teeth insure quietness at all speeds and the housing has also been altered to insure perfect alignment with the flywheel housing, and to eliminate clutch noises. A cross member has been added to the frame near the rear engine mounting, thus insuring greater strength and rigidity, and in short nothing has been overlooked that would contribute to making Buick performance vibrationless beyond belief. While much attention has been devoted to this important phase of automobile development, other marked advances have also been made. The problem of removing water from the crankcase and keeping oil dilution within narrow limits has been solved, for instance. A simple device that has no moving parts and requires no attention from the owner, effectively removes moisture from the crankcase. Acting in combination with a new thermostatic control of the water circulation in the cooling system, this assures easy starting, even in cold weather. The crankcase ventilating device also effects a notable saving in oil. All the advancements that Buick pioneered in past years have, of course, been retained. The chassis is still the sturdy Buick sedan chassis, with every working part effectively protected against the entrance of foreign matter or the loss of lubricant.

The dependable Buick valve-in-head engine—now vibrationless beyond belief—is sealed at every point, has a gascoling strainer, air cleaner, and an oil filter. The Buick multiple disc clutch, torque tube drive, Buick mechanically operated four-wheel brakes, easy operating transmission, sturdy steering gear, automatic belt control, controllable beam headlights, and cantilever rear springs are other features that have established themselves firmly with motorists.

Bonesteel Motor Co., 474 S. Com'l. has the Dodge automobile for you. All steel body. Lasts a lifetime. Ask Dodge owners. They will tell you.

Satisfy your sweet tooth with these good Wilman's candies. We have the exclusive right of sale to this line in Salem. Crown Drug Store, 332 State.

HOW THE ROADS ARE

(Continued from page 1.)

road, passable but rough. Make local inquiry after rains.
Otter Rock, Newport: Macadam.
Newport, Walport, Yachats: Beach road; ferry across Yaquina bay and Alsea river.
Roosevelt Coast Highway
Coos and Curry Counties
Lakeside, North Bend: Macadam.
Ferry across Coos bay.
North Bend, Marshfield, Coquille: Paved.
Coquille, Bandon, Port Orford, Eubere creek: Macadam.
Eubere creek, Gold Beach: Narrow mountain road. Fair condition.
Gold Beach, Myers creek: Macadam.

Myers creek, Brookings: Narrow mountain road. Passable.
Brookings, California state line: Corvallis-Newport Highway.
Corvallis, Philomath, Wren, Eddyville, Toledo, Newport: Macadam. Roosevelt coast highway open north to Otter Rock.
McMinnville-Tillamook Highway
McMinnville, Sheridan: Paved.
Sheridan, Williams: Grand Ronde, Hebo, Tillamook: Paved; balance macadam. Parolling operations under way.

between Grand Ronde and Hebo.

Mt. Hood Loop Highway
Portland, Government Camp, Hood River: Paved to Gresham; balance macadam.

The Dalles - California Highway
The Dalles, Dufur, Maupin, Crater, Madras, Redmond, Bend: Macadam except 5 miles dirt road at Trail Crossing of Crooked River. Under construction.

Bend, Lava Butte: Under construction; use old road which is cinder surfaced. Fair condition.
Lava Butte, Lapine: Macadam.
Lapine, Crescent: 14 miles new grade, rough but passable. Balance of 4 miles surfaced. Detour over old road, new grade very rough.

Crescent, Beaver Marsh, Sand Creek, Fort Klamath, Klamath Falls, Merrill, California state line: Macadam.
Oregon-Washington Highway
Pendleton, Washington state line: Paved.
Pendleton, Pilot Rock, Vinson, Heppner, Heppner Junction: Macadamized except between Vinson and Lena which is under construction.

Klamath Falls, Lakeview Highway
Klamath Falls, Bonanza: Macadam.
Bonanza, Drews Valley section: Unimproved road. In fair condition.

Drews Valley, Lakeview: 8 miles macadam. Balance fair dirt road.
Central Oregon Highway
Bend, Burns: First 12 miles macadam; balance fair dirt road open to travel.
Burns, Crane: Macadamized.
Crane, Vale: Rough but passable.

Redwood Highway
Connection with Oregon Caves
Grants Pass, Kerby, Crescent City: Graveled road in good condition.
Kerby, Oregon Caves: Graveled road in good condition.

McKenzie Highway
Eugene, Belnap Springs, Sisters, Redmond, Bend: Macadam.
Alsea Highway
Corvallis, Philomath, Alsea, Lincoln county line: Macadam.
Lincoln county line, Tidewater: Passable when dry. Under construction.

Tidewater, Walport: Macadam.
C. A. Luthy, Reliable jewelry store. What you are looking for in jewelry. Where a child can buy as safely as a man or woman. Repairing in all lines.

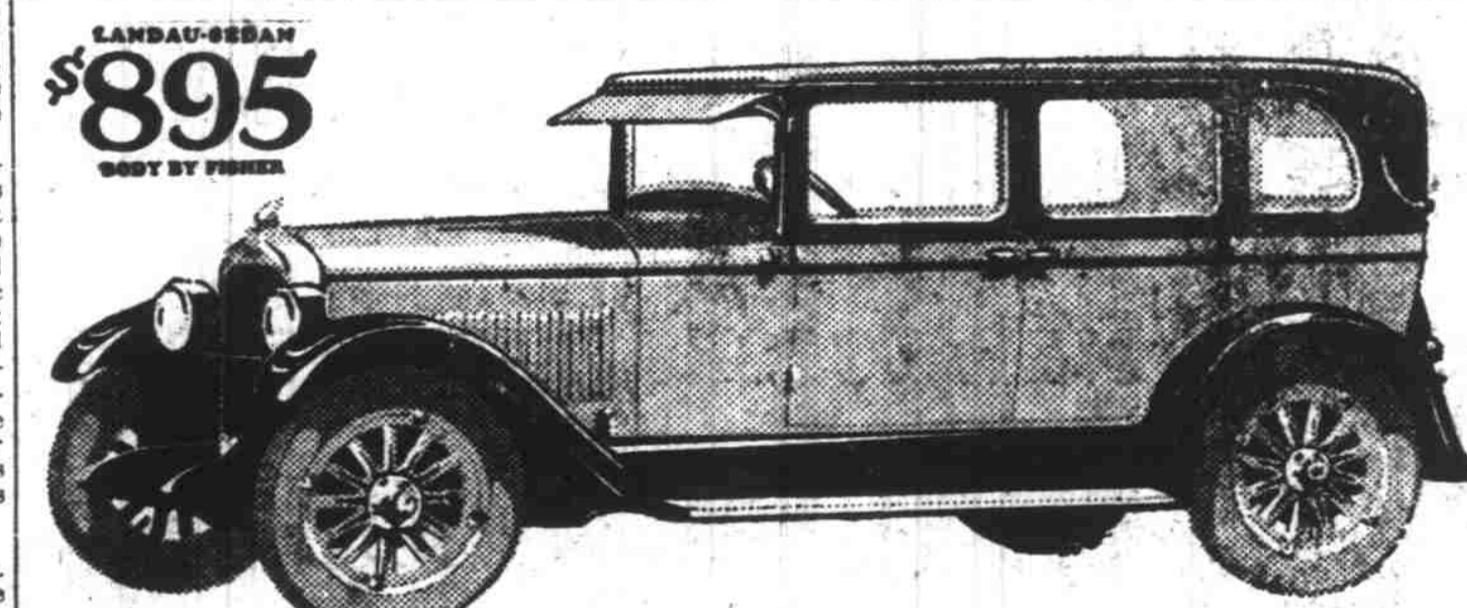
Smith & Watkins for tire service at a lower cost. Vulcanizing and retreading, tube repairing. If you have tire trouble just call 44. Corner Court and High Sts.

VALVE IN SLEEVE PRINCIPLE USED

(Continued from page 1.)

tain advantages inherent in the form of construction used in its design and manufacture. The Knight sleeve valve motor, in which two sleeves are used, has been thoroughly tried out through better than eighteen years of constantly increasing use.

Doughton & Sherwin, Hardware, 286 N. Com'l. St. Hardware, Builders' Supplies, Paints, Varnishes. Give us a call, you'll find our prices reasonable.



The Pontiac Six is Outselling —because it is Built to Outlast

In the short time it has been before the public, the Pontiac Six has established a series of production records never even approached in automotive industry.

And once the first few thousand owners were in possession of their cars, they discovered that the Pontiac Six displayed the most desirable of all motor car qualities—unfailing sturdiness and dependability!

And simply because it is built to outlast, the Pontiac Six is outselling its field all over the nation today.

VICK BROS., Salem, Oregon
Associate Dealers
MILLER MOTOR CO., Albany, Oregon; FRED T. BILYEY, Scio, Oregon; E. E. TAYLOR, Lebanon, Oregon; SILVERTON MOTOR CAR CO., Silverton, Oregon; GEO. DORR, Woodburn, Oregon; C. J. SCHREVEE & SON, Dallas, Oregon; HARRISBURG GARAGE, Harrisburg, Oregon; JOHNSON MOTOR SALES CO., Corvallis, Oregon.

OAKLAND-PONTIAC

PRODUCTS OF GENERAL MOTORS

Sixes

U.S. LIVING COST FALLS, CARS AIDED

Favorable Trend in Prices Reflected in Increased Motor Use

The cost of living in the United States, which has been declining since November, 1925, from June to July decreased another eight-tenths of one per cent, and indications are that it may decrease further or at least remain fairly stable for the next few months, according to the monthly study of living costs made by the National Industrial Conference Board, 247 Park Ave., New York.

While the cost of living has been declining since November, due principally to declining retail food prices, wholesale prices have been decreasing ever since August, 1925, the average wholesale price index for July of this year being 6 per cent lower than that for August, 1925. The decline in the average cost of living since November, 1925, has been 3.4 per cent; the Conference Board's index 171.8 in November.

The decline in the wholesale price level during the current year has been practically world-wide as regards the principal industrial countries, the Conference Board points out. Exceptions are Belgium and France, where currency inflation has caused prices to rise and has obscured the long time trend; Italy, where efforts are being made to balance the budget, and Poland where there have been recent governmental disturbances.

Most noticeable was the decline of wholesale prices in Denmark and Norway where there is an adjustment of the currency in progress, but it was also marked in the United Kingdom, Germany and Spain, Switzerland, Czechoslovakia, Finland and others. In the Far East, trends varied, prices rising slightly in China, but declining in Japan and India. Wholesale sales prices in Australia and New Zealand were almost stationary.

The annual rate of decline of wholesale prices in the various foreign countries on basis of the last 12 months for which figures are available was as follows: United Kingdom, 7.4 per cent; Ger-

many, 6.4 per cent; Netherlands, 6.3 per cent; Denmark, 20.3 per cent; Norway, 29.5 per cent; Sweden, 7.1 per cent; Switzerland, 10.8 per cent; Spain, 6.5 per cent; Canada, 1.9 per cent; Japan, 10.1 per cent; India, 8.3 per cent; New Zealand, 0.6 per cent. Wholesale prices rose in Belgium at the rate of 27.3 per cent; in France, 32.4 per cent; Italy, 3.3 per cent, and in China, 1.2 per cent.

In the United States, lower retail food prices were the principal cost of the lower cost of living, having dropped nearly 2 per cent from June to July, while retail clothing prices contributed a 0.6 per cent decline. Lower clothing prices, however, were confined mostly to women's wear, men's apparel remaining practically stationary. Rent, fuel and light and sundry items in the cost of living budget remained stationary from June to July.

The following table compares the declining trend of wholesale prices with that of the cost of living in the United States during the last 12 months, by means of index numbers:

Date	Whole-Price Index	Cost of Living Index
1914 (Base)	100	100
1925 August	163.5	168.7
September	162.8	168.2
October	160.7	169.7
November	160.8	171.8
December	159.2	171.4
1926 January	159.0	170.4
February	158.0	169.5
March	154.4	168.5
April	154.0	168.4
May	154.6	167.8
June	155.2	167.0
July	153.6	166.0

Patton's Book Store is showing a wonderful contrivance called "Memindex." It's made up for real personal efficiency. Automatic reminder of individual matters.

Quality painting, both varnish and laquer work, in our modern equipped paint shop. Washing, greasing and night service; tire repairs. Wood's Auto Service Co.

OLDSMOBILE ADDS SAFETY FEATURES

(Continued from page 1.)

Engineers were to design indirect illumination for the instrument board panel. The light has been placed in back of the panel and so arranged as to give full but indirect illumination of the important operating instruments, including ammeter, oil gauge, fuel gauge and speedometer, but at the

same time casting no glare that might possibly confuse the eyes of the driver.

The new anti-theft car lock is a distinct feature in locking design. The lock is protection both against thieves and possible carelessness on the part of drivers.

Both the switch locking device and the coil are built integral in a vault-like steel housing mounted on the back of the instrument panel. This eliminates the hazard of the car thief who has been "cutting-over" on locks in order to start the ignition. With this new lock the usual methods of thieves are defeated as the key is the only method of unlocking the ignition. After the key has released the ignition lock it must be removed before the ignition can be turned on. This eliminates the bad practice of owners leaving keys in locks while cars are parked. Turning of the ignition also locks the switch.

Real leather brief cases now on sale at \$2.69. Other big bargains in real values. Max O. Buren, 179 North Commercial. See the window display.

Hartman Bros. Jewelry Store. Watches, clocks, rings, pins, diamonds, charms, cut glass, silverware. Standard goods. State at Liberty St.

SMOOTH CHEVROLET CAUSES COMMENT

(Continued from page 1.)

the landau-sedan in Alpine green and the coupe in Dundee gray. All open models are done in Biscay green.

Disc wheels are standard equipment on the landau, sedan and coupe. The coach, touring and roadsters have wood wheels. Balloon tires are standard on all closed models.

There's a good reason for our meats being fresh! They're fresh because we keep them fresh. By buying here you are playing safe. Hunt & Shaller, 263 N. Com'l.

The Salem Hdw. Co., most progressive. Every accommodation given to those in need of best hardware supplies. Work and prosperity the motto. 120 N. Com'l.

H. T. Love, the jeweler, 335 State St. High quality jewelry, silverware and diamonds. The gold standard of values. Once a buyer always a customer.

Mrs. H. P. Stith, millinery. Most beautiful hats in Salem; all shapes and colors; full stock from which to make fine selections. Best quality. 333 State St.

Beauty Comfort Economy Dependability Performance

So Smooth—so Powerful

What more do you need in an Automobile?

Because no other car provides such a remarkable combination of the modern features essential to motoring satisfaction, tens of thousands are daily asking themselves: "What more do we need in an automobile?"—and are promptly and satisfactorily answering their own question by purchasing the Smoothest Chevrolet in Chevrolet history.

Brighter, more striking Duco colors—the comforts and smartness of enclosed Fisher bodies—time-proved economy and dependability—brilliant acceleration, effortless control, abundant power, amazing smoothness at every speed—all these qualities are yours in today's Chevrolet at Chevrolet's remarkably low prices!

Come in! Drive this splendid low-priced quality car! Learn why it is the overwhelming choice of buyers everywhere!

Newton Chevrolet Co.
Opposite City Hall Telephone 1000
"Everyone Is Talking Chevrolet"

QUALITY AT LOW COST



WHY DENY YOURSELF THE BEST IN MOTOR CAR BODIES

The finest of the new cars in all price classes have now been announced—Cadillac, Buick, Chevrolet, Oakland, Oldsmobile and Pontiac.

All offer vastly greater values than ever before in motor car history.

All register amazing advantages in performance and ease and economy of operation.

But the greatest factor of their new glory is described in a single phrase—Body by Fisher.

Here is their supreme beauty—setting absolutely new standards in charm of design and interior fitting.

Here are unequalled factors of safety which add so much to your comfort and confidence.

Here are exclusive conveniences and niceties which do, indeed, make the car with Body by Fisher superior in its class.

No matter what mechanical developments may allure you, it is the body of your car with which you live most intimately—that is why the General Motors units, makers of the best of the new cars in all price classes, point so proudly to the emblem—Body by Fisher.

With the finest of the market to choose from there is no reason why you should deny yourself the greater safety, beauty and comfort which only a Body by Fisher can give.

FISHER BODIES

GENERAL MOTORS

