

WHIPPET MOTOR IS SMALLEST IN CLASS

Develops Greatest Brake Horsepower in Light Car Field; Tests Show

While much has been said regarding the large power development of the small dimension motor as built for racing cars, it has remained for the new Overland Whippet, the European type light car recently announced by Willys-Overland, Inc., to bring an equivalent large power development from small dimensions, to the standard car production for passenger use in this country.

The rated horse power of the engine in this light car is lower than that of any other light car built in America, it being rated at slightly over 15 horse power. The developed brake horse power is 31, which is the highest brake horse power yet reached by any stock production light car, four cylinder power plant in this country.

This is in accord with the power developments of the European light car motors, which show about 100 per cent greater developed power than their rated power ability. The average light four cylinder motor in this country shows approximately a 20 per cent increase in developed power over rated power.

The developed power of the Whippet motor gives approximately one horse power for every 66 pounds weight in the car, the sedan model being used for these figures.

With 5000 dealers already using the new Whippet models in daily demonstrations, remarkable records of power performance are being received. Already a Whippet has been driven to the top of Pike's peak in Colorado, without having to stop to take on water, a feat rarely accomplished by any make of car.

In competitive demonstrations it has shown a power performance in hill climbing 20 per cent in excess of that of the nearest car in the light, four cylinder class.

Driven from Kansas City to Denver, a Whippet averaged 40 miles an hour for the last 200 miles of the trip which was made over dirt roads.

The weight of the crankshaft, which is 50 per cent heavier than the average light, four cylinder car crankshaft, the large size of the crankshaft bearings, which are equivalent to those used on the large motors, the short, rigid crankshaft construction, the length of the connecting rods which are 50 per cent longer than the average parts of this nature on other light car motors, have all brought about a freedom from vibration which is immediately noticeable in the performance of the car.

Comments by users have been to the effect that in smoothness and in flexibility, the Whippet runs like the average six.

Tests to determine fuel economy have shown that the factory claim of 30 miles to the gallon at normal driving speeds can be obtained by the average driver. This is a striking performance in view of the high power development of the motor.

New line of satin and velveteen hats for better wear. The very latest for the smartly dressed woman. The Vandy Hat Shop, 387 Court street. (*)

F. B. Shaver's Harness and Leather Goods Store, 170 S. Com'l. Suit cases, valises, portfolios, brief cases, gloves and mittens. Large stock. The pioneer store. (*)

LOADED TROLLEY IS TOWED BY OVERLAND
(Continued from page 1.)

during the entire run. The Federal Street Belt is considered one of the most heavily trafficked routes in Youngstown.

The car after making stops for taking on and discharging passengers, started in low gear and within 100 feet was operating in

Lake Lytle Hotel
Mrs. George Watt, Mgr.



Twixt Lake and Ocean

The largest and most modern hotel on Tillamook Beaches

STRICTLY MODERN
Suff and lake bathing, heating, sea and lake fishing, clam digging, hiking and hunting.

Open All Year
POPULAR RATES

Post Office
Rockaway, Oregon

Tractor Transmission Demonstrated



The newly developed Hamilton transmission applied to Fordson tractors, was demonstrated Friday morning on the Jim Amort farm near Shaw. Rush Hamilton, designer of the new transmission, had charge of the demonstration which was given under the auspices of the Valley Motor company of Salem, Ford and Fordson dealers.

In the group of pictures above, W. G. Hardy, tractor manager

high gear at the average speed of a trolley.

The schedule of the Federal street car line calls for a trolley every eight minutes at the various "checking points" maintained by the company, and the time made by the Overland six equalled that of the regular trolley schedule.

Patton's Book Store offers all the latest in Birthday Cards—try them. Ask to be shown the funniest of all cards, Scotch Birthday, 340 State street. (*)

The Electric Restaurant serves elegant meals and lunches. Try them. Ask to be shown the funniest of all cards, Scotch Birthday, 340 State street. (*)

Bayocean Bungalows
Housekeeping for 3 or 4, wood, water, bedding, lights, dishes, etc., \$13 per week, or \$20 for two weeks.
Cool and pleasant, protected from wind, near beach, store, etc.
Summer road now open. Drive west and north from Tillamook city, or drive to Bay City and take boat which meets trains.
Get circulars at Statesman Office.
ELSHIE M. ROGERS, Mgr.
Bayocean, Oregon

ONE WAY TO MAKE A DOG RUN



is to tie firecrackers to his tail. But it's hard on the dog.

You can make your car run by substituting replacement parts for GENUINE parts, but you can't get the same service.

Genuine parts are cheaper. They fit, they don't have to be machined to make them work. And genuine parts always last longer.

We are AUTHORIZED factory service representatives for practically every make of electrical equipment used on the cars sold in Salem. We use only GENUINE factory parts.

"Genuine Parts Are Better—Ask the Man With the Wooden Leg"

E. H. BURRELL

BATTERY AND ELECTRICAL SERVICE

238 North High Street

Telephone 20

BUSH LEAGUE PILOTS CANNOT MASTER CAR

Plenty of Speed Evident in Many Cases, But Control on Curves Lacking

"In my observations of automobile drivers, I am reminded of many bush leaguers who have been tried out for places on the big leagues and have failed in the pitcher's box," said George O. Brandenburg, general manager of the Oregon State Motor association. "In practically all instances with the pitchers, they were sent back to the 'sticks' through lack of control. Wonderful speed they had, but no control. Now you get the point. Too many auto drivers have wonderful speed but lack control."

In analyzing the phrase as applied to the auto driver, "wonderful speed, but no control," Mr. Brandenburg pointed out that the lack of control was due to too much speed in most instances. When a car gets to a certain speed on ordinary traction as found on our highways, it is beyond control, and with our highways crossed by intersections, and vision obscured frequently by turns, there is ever a warning to be issued to the fellow with wonderful speed and too little control. Even on a straightaway, a car becomes hazardous beyond a certain speed, as blowouts, or a dozen mishaps of the mechanism of the car will result in a spill that will not only endanger the lives of the occupants of the car but of those in the immediate vicinity of the unlucky one.

Strict attention to the path of the motor car is another item that receives too little attention. Many drivers, traveling at a good rate of speed have a habit of looking everywhere but down the path of the auto. If one must look into the eyes of other occupants of his auto while talking, he should temper his speed to suit such occasions. If scenery must be enjoyed, it is incumbent upon the driver to either stop or forego the pleasures of such attractions. A mis-guided auto at high speed is

just as hazardous to the motorist as too much speed with a lack of control is to the aspiring twirler of the big leagues.

Telephone 165, Capital City Laundry. The laundry of pure materials. We give special attention to all home laundry work. Telephone and we will call. (*)

The rug and carpet department of the Hamilton Furniture Co. is one of the most complete in the state. All rug prices below regular list. (*)

NEW PAIGE MODELS QUICKLY WIN FAVOR

(Continued from page 1.)
ness, and established a new low record in Paige selling prices. On the other hand, the car profited by the costliest car of the Paige line, the engineers having mounted on the standard 127-inch chassis a body so distinguished as to be of outstanding beauty. This car, which is readily convertible from the coupe type to the open roadster, has found favor both as a car for the business or professional man and as a striking sports model. It embodies several new features that cause comment from all who inspect it, especially the embossed leather used in the seats, the luxurious interior trim, and the ingenious arrangement by which the car is so quickly changed to an open model.

Complete line of red and black rubber hose at wholesale prices. Keep your lawn green the month of August. Malcolm's Tire Shop, 205 N. Commercial St. (*)

Have you tried Better Yet Bread? Sure you'll like it. It makes your children healthy and sturdy. Ask your grocer. It's made by the Better Yet Baking Co., 264 N. Commercial. (*)



You Save Half

when you have your car refinished with

B-A-K-O

Every job guaranteed for one year. Beautiful colors—lustrous and durable.

Get Our Special Prices

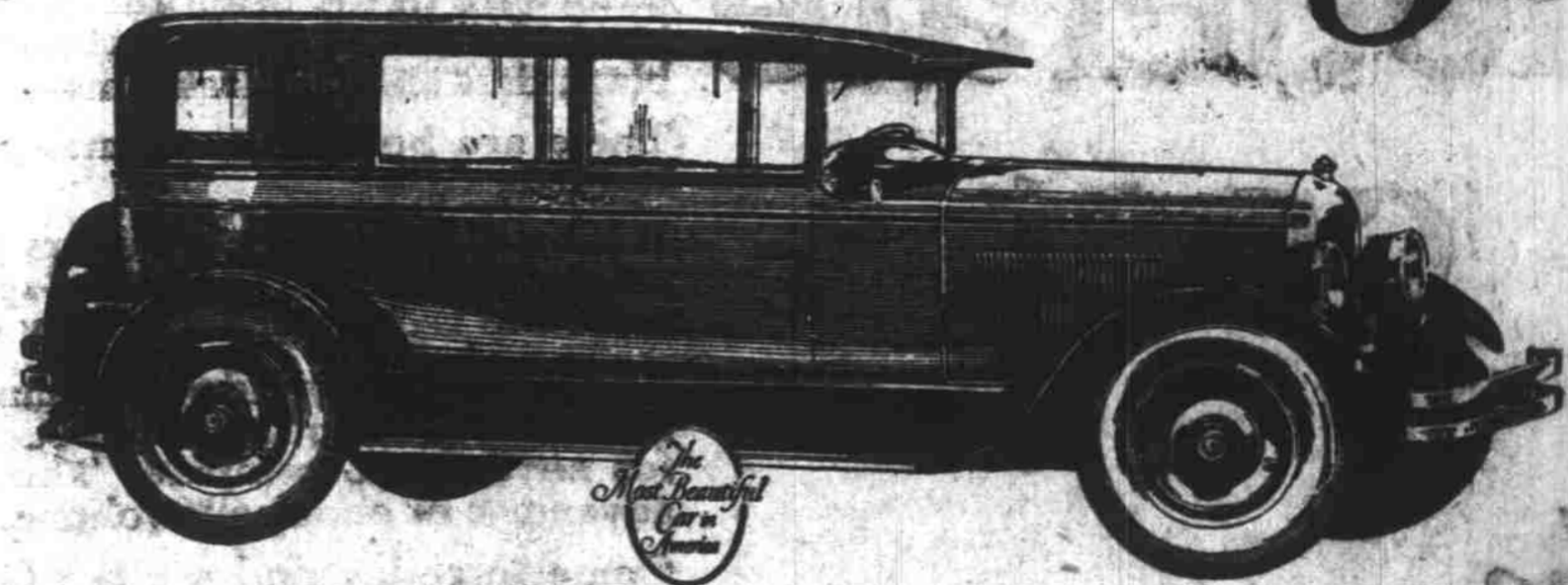
O. J. HULL Auto Top and Paint Company

267 South Commercial

Phone 578

"WE PAINT 'EM FOR LESS"

see & drive THE New Paige



nearly a thousand dollars Less

GOOD judgment suggests that you see all the new cars—before you buy any. Paige welcomes your strictest comparisons of the newest and finest Paige with any or every other car. For Paige believes that you simply cannot duplicate the performance, appearance or sheer downright dollar-for-dollar value of these latest Paige cars at anywhere near their amazingly low prices.

The newest Paige cars sell for nearly a thousand dollars less than last year's Paige models. And they do it because Paige is building and selling five times as many cars this year as last. Indeed, Paige sales throughout America registered a

gain of 551% in the first six months of 1926.

But even the new low prices of these Paige cars will not delight you as much as the wonderful performance they display. They are speedy cars, powerful cars, economical cars. Acceleration is instantaneous, while the slightest pressure on their Paige-Hydraulic 4-Wheel brakes bring them to cushioned rest immediately. They are the easiest cars in the world to handle in traffic.

A demonstration will cost you nothing—and you'll never know how much greater value you can get for your money until you ask for one. Call or phone—soon.

Features of this New Paige:

- Improved Paige-Bull Motor, none made in other car lines
- Exhausted Universal Joints—125 inch Wheelbase—Spring 35 inches long—7 inch Frame—Shock Absorbers—6 inch Ballcon Tires—Paige Hydraulic 4-Wheel Brakes—Easy Steering through Ball Bearings—Saw blade Steel, Light Action Clutch—Over-Drive, Easy Gear Shift—Coincidental Lock

Trumm Motor Car Company

349 North Commercial Street

Telephone 365