

WILLYS-KNIGHT '70' PLEASES YOUNG SET

Unusual Speed and Pick-Up Cooked in Smart Motor Car Designs

After all the younger generation possesses a keen knowledge of motor car values. It is motor wise, critical and exacting in the various requirements of present day automobiles.

This was interestingly revealed recently in a check-up made by Willys-Overland retail salesmen and field men in an effort to gain the opinion of the younger set relative to speed, pick-up and appearance of automobiles. This was furthered by an unusual demand for Willys-Knight "Seventies" especially noticeable during the last 30 days in the youthful buying field.

With thousands of college men and co-eds retired for the summer months from school terms, seeking diversion on highways and open spaces the company felt a great increase in demand for the "Seventy" models.

It was established that the younger motor car purchasers have made clear a decided trend toward the car with speed, appearance, get-away. The entire field of youthful purchasers is turning to a car which is responsive in acceleration, durable in maintaining speeds above 50 miles per hour and powerful beyond common need.

A recent test of the "Seventy" shows that this car, powered with the famous Knight sleeve valve motor, is capable of attaining a speed of 25 miles per hour from a starting speed of five miles per hour in less than eight seconds. At the same starting speed during this test, a speed of 40 miles per hour was attained in less than 15 seconds. This indicates plainly the responsiveness of this model. Following the flexibility test the car was put to a severe road speed grilling during which it maintained between 62 and 67 miles per hour with the same ease and comfort as if driven at a lower rate.

Vick Bros. are selling the Oakland and Pontiac cars. Agents for the valley counties. Pioneer firm in autos. Oakland coach now only \$1290. 280 S. High St. (*)

L. A. Scheelar Auto Wrecking Co., oldest in the Willamette valley. New and used parts and equipment. Low prices and quality service here. 1085 N. Com'l (*)

STAR COACH FINISH IS BEST ON MARKET

Many Other Refinements Are Noted in New Four Coach Being Shown

In the refined Star Four Coach the hood, radiator and Haystack body, lacquered in a handsome shade, blend in a perfect stream line—the graceful contour of the brightly nickled radiator completing an effect both pleasing and dignified, according to the Salem Auto company, local Star dealers.

Highly polished, heavy black, ribbed, artificial, water-proofed leather, covers the top, rear of top, sides and back of body. The top and corners of the body back are gracefully rounded, while nickle trimmed Landat irons on the rear sides further develop the Coach effect.

Unusual roominess is a feature of this coach which seats five adults comfortably, with plenty of leg room. The right front seat tilts sidewise toward the driver's seat, giving fifteen inches of clearance for entrance to either front or rear. The left front seat may be tilted forward to permit entrance to the rear of the car through the left door. Ample foot space is provided under this seat.

Upholstery is of an attractive shade of durable gray cloth with neat brown stripes. Wheels and mudguards are black.

Refinements that appeal to the discriminating buyer are: large plate glass windows, quick acting window regulators, one-piece plate glass windshield, cow ventilator and screened ventilators above windshield, automatic windshield wiper, rear vision mirror, dome light, rear window shade and 29 x 4.40 in. balloon tires.

O. J. Hull Auto Top and Paint Co. Radiator, fender and body repairing. Artistic painting adds 80% to the appearance to your auto. 267 South Commercial. (*)

Vacation Time

Here you will find a reliable guide to Tillamook and Lincoln county beach resorts. Distances, road conditions and full information is given here in news and ad form.

Surf Bathing, Fishing, Hunting, Claming, Mountain Climbing, Boating

LEAVING Salem from corner of Commercial and Chemeketa street and crossing the bridge that spans the Willamette river; entering Polk county, Rickreall is 10 miles from Salem.

From Rickreall take the west side Pacific highway and travel north to Amity. This road is all paved with the exception of a quarter mile where the road crosses the Southern Pacific electric line. Amity is 23.4 miles from Salem. At Amity you have your choice of traveling 14 miles by pavement or 6.6 miles by gravel road to Bellevue. If you wish the pavement route, head straight north on the highway from Amity for 6 miles where a paved road forks to the left. Distance from Salem 29.6 miles. From here you travel west for 8 miles to Bellevue. If you wish to take the shorter but gravel road from Amity, turn west and you will find a fair gravel road which will lead you to Bellevue, which is just 30 miles from Salem. This is the more direct route and all distances from Salem to the coast will be figured by this route. From Bellevue to Sheridan a distance of 4.4 miles there is excellent pavement. On entering Sheridan you cannot but help note the sign: "You Name It—We Grow It." Sheridan is 34.4 miles from Salem.

SHERIDAN

IDEAL CAFE
SHERIDAN, OREGON
A Good Place to Eat
Prices Right

At Sheridan you leave the pavement but there is an excellent gravel road to Willamina, a distance of nearly 5 miles. Willamina registers 39.3 miles by the speedometer from Salem.

Cross the Willamina river and after traveling about 6 1/2 miles you will come to a fork in the road. The main highway turns to the right here but those wishing to see New Grande Ronde should take the road straight ahead which joins the highway again in 3 miles and makes the total distance no further. Two miles from this fork of the road you will arrive at Grande Ronde which is 47.9 miles from Salem.

Going north from Grande Ronde 1 1/4 miles you will again be on the highway. This place is the Old Grande Ronde and is 49.3 miles from Salem.

GRANDE RONDE

Grande Ronde Auto Park
Good Eats and Camp Grounds
Service Station
Good Fishing Ground

After leaving Old Grande Ronde the road leads gradually upward through timber and over a well graded and well kept highway to the summit of the Coast range mountains which is 835 feet above sea level. The summit is 57.7 miles from Salem. A few miles further and you enter Tillamook county and in less than another mile you arrive at Dolph which is 61 miles from Salem.

DOLPH

Dolph Sulphur Springs
HOTEL AND RESTAURANT
Good Beds—Good Meals
Served at all hours.
Under New Management
CHARLES McFARLAND, Prop.
All Patrons Treated With Courtesy

From Dolph to Hebo, a gradual downward grade, you will find good gravel roads. Hebo is 72 miles from Salem.

HEBO

Ott's
SERVICE STATION
Standard Union Shell
GASOLINE
Free crank case service!
Oils, Tires and Accessories
Auto repair shop in connection Acetylene Welding, Towing, Expert Repairing
TELEPHONE 8X12

HEBO CONFECTIONERY AND RESTAURANT
Meals Served at All Hours
Confections, Candies, Ice Cream, Magazines, Papers, Cigars and Tobacco. Just around the corner on Roosevelt Highway Road.
MRS. ANNA MYERS, Prop.

From Hebo we will first give directions to the closest beaches. Turn to your left at Hebo and take the Roosevelt highway which runs south and west 2 1/2 miles to Cloverdale which is 74.5 miles from Salem.

Two and one-half miles from Cloverdale take the right hand road, leaving the Roosevelt highway, for Pacific City. In a quarter of a mile from this point you will note a sign, "Brooten's Baths," which is located off the Pacific City road about a mile and up quite a steep grade, but the road is all planked. Brooten's Baths is 78.5 miles from Salem. Continuing on the Pacific City road you reach Woods which is 80 miles from Salem.

WOODS

GOOD FISHING AT NEEL'S PLACE
Confectionery Light Lunch
1/2 Mile from Pacific City on Nestucca River
Boats—Cabins—Free Camp Grounds
Phone Neel's Place at Woods, Oregon

Arriving at Pacific City you will find that you have traveled 80.6 miles from Salem and that you are at the nearest beach.

PACIFIC CITY

Edmunds Hotel
PACIFIC CITY, OREGON.
Dining Room in Connection
Sea Foods Our Specialty
Telephone Cloverdale 2P7

Pacific City Beach

Salem's Nearest Beach by Auto
Stage leaves terminal three times daily for Pacific City via McMinnville. This beach possesses more natural attractions than any other beach on the Oregon coast.
A scenic beach paralleled within 500 feet, by the beautiful Nestucca river, teeming with every variety of fish, salmon, trout, clams, crabs, etc. Accommodations: Hotel, Cottages, Apartments, Tent Houses—Spacious, protected camp grounds—wooded hills.
Note this unparalleled combination. An ocean beach and river fishing, boating and bathing. All within three minutes walk.
Baseball games, concerts, dancing—children's playgrounds and other amusements.
For Particulars Write
F. R. Beals, Pacific City, Ore.

Going back to the Roosevelt highway 3.8 miles from Pacific City you again travel west and south for 8.2 miles and you arrive at Neskwim, a new resort right on the ocean and 85.2 miles from Salem.

NESKOWIN

Neskwim Garage

CARL WHITE, Prop.
Shell Gasoline, all kinds of Oil, Tires, Tubes, Repairing and Storage
Reliable Service

DON'T BOTHER

To bring your groceries with you when you come to the beach.

The Neskwim Store carries a full line of staple and fancy groceries, also fresh meat, sea food, ice cream and confectionery; at the same prices you pay elsewhere. Come to Neskwim this summer!
Lunch room in connection.
The Neskwim Store
H. W. FRINK, Proprietor

Continuing south from Neskwim for 16 1/2 miles, over a well-graded mountain road, you arrive at Delake, which is 101.8 miles from Salem.

DEVIL'S LAKE

Lots and acreage overlooking Devil's Lake adjacent to Roosevelt Golf Club, which will be open to play by May 29, if weather permits.
Really a Wonderful Place to Enjoy Your Vacation
For Further Particulars See
BECKE & HENDRICKS
189 N. High Telephone 161
Salem Oregon

LAKE-OCEAN LAND COMPANY

One mile farther on is Camp Roosevelt; 2 1/2 miles south of Camp Roosevelt is Nelscott Beach.

NELSCOTT BEACH
Ocean Front and Highway
HOME SITES
New Furnished Cottages
Write for Illustrated Catalogue to
NELSCOTT LAND COMPANY
2009 E. Stark St., Portland, Oregon

One mile further south is Taft which is 106 miles from Salem. The end of the completed road is 1 mile south of Taft.

TAFT

Siletz Bay Trading Co.
GENERAL MERCHANDISE
Cottage, Camp Ground, close to an excellent beach. Salt water fishing, crabs, rock oysters, etc.
F. C. Robison, Taft, Oregon

For the Tillamook beaches at Hebo turn west on the highway and in 4.6 miles you will reach Beaver and pavement. Beaver is 76.6 miles from Salem.
This pavement lasts for 5 miles

PLEASANT VALLEY

Pleasant Valley Store
General Merchandise, Gasoline, Oil, Auto Repairs, Notions, Candies, Cigars and Tobacco, Ice Cream and Cold Drinks on Ice.
C. P. and R. D. Godfrey

TILLAMOOK

Just after leaving Pleasant Valley you again strike pavement, which lasts all the way to Tillamook. Tillamook is 93 miles from Salem.

Todd Hotel

Mrs. Hazel Vining, Prop.

"Comfort Not Style," our motto. Good, clean comfortable beds, steam heat, hot and cold water, family rooms.

Rates 75c and up
104 First St. Tillamook, Oregon

NOW

is the time to exchange property. We have what you are looking for. What have you?

See A. C. EVERSON
"The Man That Sells His Service"
TILLAMOOK, OREGON

Those wishing to reach the beaches west of Tillamook, turn west on 3rd street. The road is paved for two miles where you cross the Tillamook river. After crossing the bridge take the left hand road. There is good gravel road for 1 1/2 miles then 1 1/2 miles of plank road through some big timber. At a distance of 5.8 miles from Tillamook there is another fork in the road. Take the right hand road here. Two miles further and you arrive at Netarts, which is 100.7 miles from Salem or 7.7 miles from Tillamook.

NETARTS

SILVER SANDS Beach

NETARTS -- OREGON
COMFORTABLE COTTAGES and Camp Grounds
Amidst Beautiful Shade Trees
SPRING WATER
Piped to Grounds
MODERN GROCERY STORE
No Advanced Prices
Fishing—Boating—Hunting
Clams—Crabs
Bathing
The first camp grounds at Netarts

CHILDREN'S VACATIONS
Accommodations and personal supervision for children unaccompanied by parents.
Write for Particulars

RAY'S PLACE

NETARTS, OREGON
Service Station—Boat-mooring
Clam Chowder and Sea Foods
A Specialty

TERIMORE CAMP

The Home of Clams and Crabs
Furnished cottages and Tent Houses—Fine View of Bay and Ocean—The Finest and Cleanest Kamp on the Coast.
M. R. Terry & Chas. Terry
Proprietors
Telephone for Reservations

Davies Netarts Camp

Electrically lighted cottages. Tent house and camp grounds. Close to Beach
With good view of ocean and bay — pure mountain water piped to cottages and all parts of grounds.
Clams, Boating, Bathing, Crabs, deep sea fishing. "The Farmers' Beach Resort."
A. N. DAVIES, Netarts, Oregon
Phone 9F2

CAMP EDNER NETARTS, OREGON

Cottages and Apartments
Boats for clamming, crabbing or fishing.
Right on the beach. Protected from northwest winds. Rates reasonable.
Clarence Edner, Proprietor

OCEANSIDE

Oregon's most scenic Beach Resort, 9 miles from Tillamook. Rugged mountains, caves, sandy beach and wonderful scenery. Pure mountain water, health giving air and modern sanitary conditions. Bathing, deep sea fishing, dancing, store, postoffice, restaurant, crab and clam market, children's playgrounds. A paradise for the summer vacation. Furnished cottages and tent houses.
Don't miss seeing the sea lions on the rocks at Oceanside and windbreak game and animal park.
Write Allen & Fleming for Brochure
Write Rosenberg Bros. for General Information, Lots, etc.

Those who desire to go to Bay City, Garibaldi, Salthair, Rockaway and Lake Lytle, keep on the highway going straight north from Tillamook. Bay City is 7 miles from Tillamook and 100 miles from Salem.

From Bay City there is boat service to Bay Ocean, only a few minutes ride.

The next place beyond Bay City is Miami where the road forks, the road to the right leading to Seaside and to the left to Garibaldi, which is a mile further on. Garibaldi is 104.4 miles from Salem.

BAR VIEW

Furnished Cottages and Tents
We have furnished or partly furnished 4-room bungalows, with bath, and 2-room cottages for you to select from, at prices to suit your wishes. We advise bringing top covers and silverware when convenient. Bar view, front and rear porches, P. O. general store, life guard station, salt and fresh water natatorium, bowling, skating, trout and sea water fishing, clams, crabs and sea going boats making daily excursions. For information and reservations phone or write:
THE WISE DENTAL CO.
211 Falling Bldg.
3d at Wash. St., Astoria, Or. BR. 7029
THE WISE WAY
Barview, Tillamook County, Oregon

Traveling from here along the shore line passing through Barview, and Twin Rocks, you arrive at Salthair which is 109 miles from Salem.

SALTAIR

DAVIES STORE

W. A. DAVIES, Proprietor
SALTAIR, OREGON
Groceries, Hardware, Gasoline and Oil
Rockaway is less than a mile further north or 109.7 miles from Salem.

ROCKAWAY

BEACH VIEW ROOMS
Opposite Natatorium and Depot
ROCKAWAY, OREGON
Clean comfortable rooms. Hot and cold water, all conveniences.
Nettie E. Post, Prop.

Johnson's Garden Cottages

Light, Water and Wood Furnished
Rates: 3 room cottages, \$16; 2 room, \$12.50; 1 room, \$10 per week
FREE SHOWER BATHS
Plenty of Hot Water
John Johnson, Rockaway, Oregon

Information Regarding OCEAN VIEW COURT

ROCKAWAY, OREGON
G. E. Turner, Prop. Phone 27-F-12
During July and August the prices for apartments in Ocean View Court range from \$18 to \$25 per week. Individual cottages are \$20 per week each for July and August.
During May, June and September the rates are \$10 to \$15. The balance of the year the apartments are for \$10 per week, or \$25 per month.
Each apartment and cottage has individual lavatories and all cottages are equipped with running spring water and electric lights.
Each is furnished, two double beds, pillows and mattress, with the exception of bedding and linen.
We cater to transient trade also, an extra charge being made for bedding and linen. Good parking place for your cars. Bring your auto tarpaulin to cover your car.
Full view of ocean. Half block from new \$75,000 natatorium.
Deposit required on all reservations, unless personally acquainted.

NEAH-KAH-NIE

Three miles west and north of Nehalem is Neah-Kah-Nie.

NEAH-KAH-NIE

See Cliff Drive and Stop at the Tavern
OPEN JULY 1
Write or Telephone Mrs. E. G. Reed
Nehalem, Oregon

Lake Lytle Hotel



Mrs. George Watt, Mgr.

Twixt Lake and Ocean

The largest and most modern hotel on Tillamook Beaches
STRICTLY MODERN
Surf and lake bathing, boating, sea and lake fishing, clam digging, hiking and hunting.

Open All Year
POPULAR RATES
Post Office
Rockaway, Oregon

One mile further north is Lake Lytle which is a distance of 110.4 miles from Salem.

Another half mile and you arrive at Manzanita which is 111 miles from Salem.

Coming back to Miami and taking the road north for 15 miles turn to the left following this road for 3 miles you will arrive at Nehalem which is 121.8 miles from Salem.

Two and four-tenths miles west of Nehalem over a good road is Manzanita Beach which is 124.2 miles from Salem.

MANZANITA

MANZANITA BEACH

1 1/4 miles north of Nehalem
Just 29 miles either way—North to Seaside or South to Tillamook over
Roosevelt Highway
Daily Stage Service to Tillamook or Seaside.
MANZANITA is different; unexcelled for scenic beauty—quiet, restful resort. All the enticing beach sports, wonderful fishing, beautiful hikes. Well stocked store. Postoffice.
Fine Camp Grounds
Cottages and tents for rent. Make reservations by phone or write:
MISS GEIJSBEEK
Manzanita, Oregon
Don't Buy That Site for a Beach Home Till You Have Visited Manzanita

MANZANITA INN

Manzanita Beach is one of the beauty spots of the Oregon coast. An interesting place to spend your vacation. Good hotel accommodations. Reasonable rates.
L. E. ROGERS, Prop.

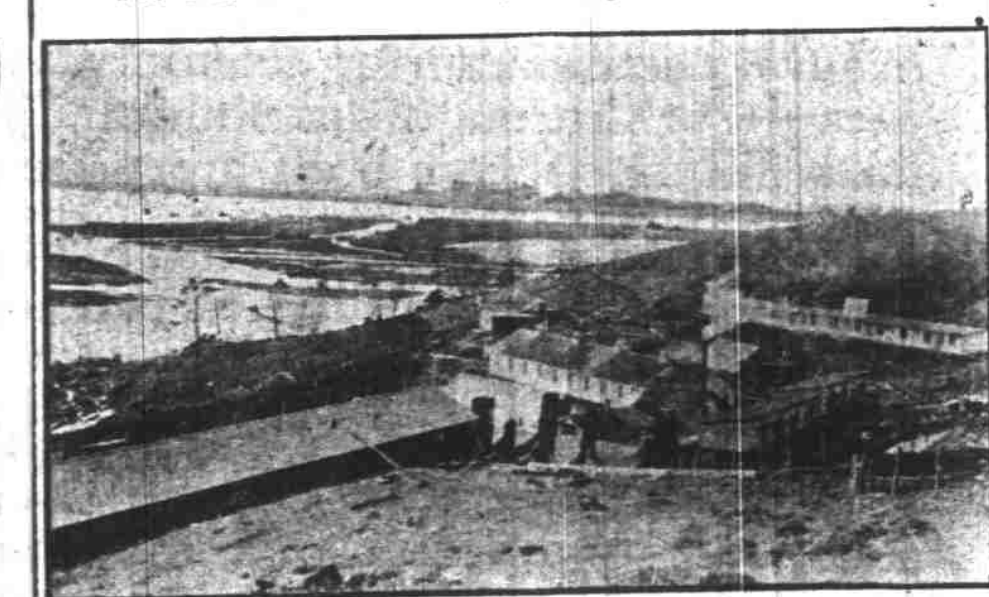
STAGES

To All
TILLAMOOK BEACHES
Also to
Dayton, Newberg, Sheridan, Willamina, Grand Ronde, Dolph, Hebo, Beaver, Tillamook, Hillsboro and Forest Grove (Via McMinnville)
Leaves Salem Daily
8:30 a. m. 2:10 p. m.
5:15 p. m. (Owl)
For Rates, etc., Call
Central Stage Terminal
Court and High Streets
Phone 698

PACIFIC STAGES

and
Parker Stage Line

BROOTEN'S BATH



"NATURE'S HEALTH GIFT FROM THE OCEAN"
One mile off main road to Pacific City. Watch for sign three miles this side of Pacific City. We have the only Magnetic Eosean water in the world.

Cottages for Rent
Handy to Butter Clams, Flounders and Salmon Fishing.
One mile to ocean. Wonderful View.
ADDRESS CLOVERDALE, OREGON