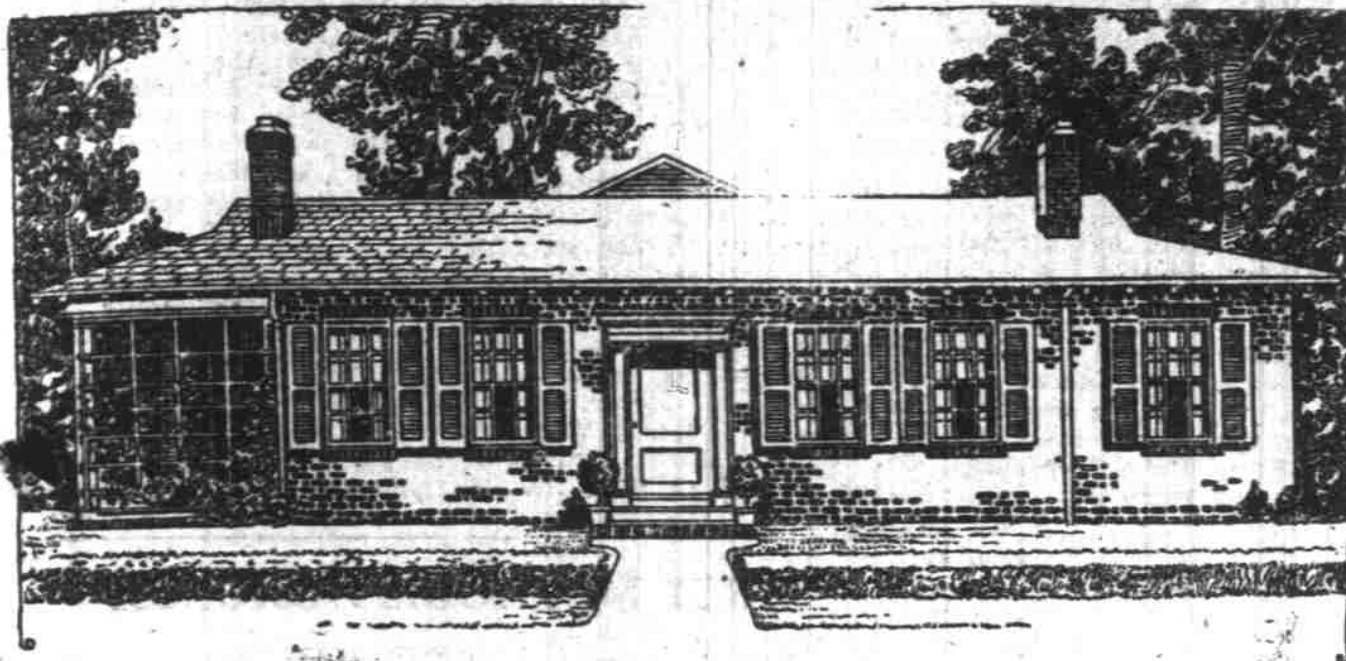


Last Year's Average of One New Home a Day to be Surpassed in 1926

No Tiresome Stairs to Climb in This House



THE WAWBEEK, DESIGN A628

There comes a time in the lives of most people when climbing stairs is an irksome task. This is one of the reasons for the increasing popularity of the bungalow with all its rooms on one floor, conveniently arranged, well lighted and ventilated and with there is something very appealing about this little home. And when one studies the interior arrangement this impression is only intensified. It sort of takes hold of one. Entrance is directly into a living room off which French doors open into the dining room. Beyond the dining room is the kitchen, cleverly disguised, and supplied with an enclosed service porch equipped for laundry work, a very practical and convenient arrangement.

Three large bedrooms, the bath and a commodious enclosed sleeping porch reached by the central hallway are in the rear. Altogether it is a very satisfactory little home. It is built of common brick. This character, well constructed, will be a good investment. It will be able to realize with an exceptional resale value.

Materials cost but constructed of materials. Uses is small. Includes tile, silo tile, sewer.

SALEM BRICK & TILE CO.

TELEPHONE 917 SALEM, OREGON

ADVERTISING AGENCY NOW IN UNIQUE HOME

George Harrison Phelps, Inc. Have Beautiful New Structure for Own Use

A building planned and created for the exclusive use of a national advertising organization was formally opened in Detroit.

The structure, a beautiful adaptation of Italian Renaissance architecture and quite unique in character, is the new home of George Harrison Phelps, Inc., the organization that produces advertising for such well known products as Dodge Brothers Motor Cars, Graham Trucks, Berkey & Gay Furniture, Iodent Tooth Paste, Ajax, Mohawk and Racine Tires, Radiantfire, Whitehead Refrigeration and others.

The new building is located at East Jefferson and Joseph Cam-

pan Avenues and is set back from the Jefferson Avenue street line about 30 feet on a brick walled terrace. Rising between the trees is a facade of brick and stone, not a flat box-like face, but one irregular in outline, that expresses the plan within. To the left of the public entrance is a semi-circular bay where the stair tower shows itself. To the right, extending up through the second and third stories is a double arched opening with a column of Breche violet marble forming a balcony and great window.

The public reception room is finished with Travertine marble floors, antique plaster walls and beamed ceiling treated with polychrome stencils. This room provides for an information, telephone and telegraph desk and waiting space for visitors.

The practical nature of the business for which the structure was designed received first consideration. This is observable at once in effective layout, the careful arrangement of departments and the complete facilities provided for the 106 employees. In these important respects the building is a striking example of modern de-

partmentized agency practice. In addition to 12 private offices for executives, a commodious conference room, mailing and magazine rooms, ample space for clerical forces, artists and production staff, the building includes barber shop, kitchenette, a regulation size squash court with dressing, locker, shower and ridding rooms. A volley ball court is laid out in the open space at the rear.

The broadcasting of the George Harrison Phelps, Inc., Radio Department continues at the former headquarters of the company, 110 Rowena Street, Detroit.

The Dixie Bakery leads on high class breads, pies, cookies and fancy baked supplies of every kind. Best by test. Ask old customers. 439 Court St. (*)

Playing bridge is almost as much fun as not playing bridge.

TRIANGLE REALTY LIST MANY SALES

Demand Increases for Property in Salem as Seen From Listings

The Triangle Realty company has reported that sales are increasing on farm property as well as all classes of city property.

Inquiries are coming in every day for small farms, dairy farms and stock farms.

Following were a few of the sales recently closed by this firm:

A. C. Haag bought a fine creek lot on North 17th street.

J. O. Gritton bought a 6 room residence on North 24th street.

Jerry Cleary bought a 5 acre improved farm south of Salem.

Harry W. Ross bought a new stucco home on North 24th street.

W. A. Stryker bought a 5 acre farm just east of Salem.

Ruel J. Smith bought a 5 room home and two lots on North Water street.

Steve Richardson bought 12 1/2 acre prune orchard at Jefferson.

P. J. Voth of Dallas bought fine 7 room home at 1555 North Capital street.

Mary M. Lewis bought a 7 room residence at Dallas.

Fry's Drug Store, 280 N. Com'l., the pioneer store, everything for everybody in the drug supply line, with standard goods and quality service always. (*)

Cross Meat Market. Biggest, busiest and best in Salem. Choice steaks, bacon, hams, sausage, lard, eggs, milk. Absolutely sanitary. 370 State St. (*)

W. G. Krueger, realtor; progressive, fair; equitable. Growing city and country make possible buys that will make you good money. Complete listings. 147 N. Com'l. (*)

Old Costumes of Turkey Disappearing From Use

CONSTANTINOPLE.—Thru government taboos and the pressure of public opinion, Turkey's national costumes are disappearing from use.

The Minister of Education has sent an order to the governor of each province, requiring specimens of the costumes peculiar to each section and class of people to be preserved.

A sign of the changing times is an order at the request of the Denizli Woman's club that forbids women to appear in the streets in the customary mashlak (a sort of kimono) and towel-like head covering.

Hartman Bros. jewelry store. Watches, clocks, rings, pins, diamonds, charms, cut glass, silverware. Standard goods. State at Liberty St. (*)

Gabriel Powder & supply Co., lumber, building materials, paints and varnishes, roofing paper. Get prices there and make a big saving. Office, 175 S. Com'l. (*)

The Peerless Bakery, 170 N. Com'l. Sanitary, up to date. Prompt delivery. Bakers for those who appreciate the best. Increasing patrons tell the tale. (*)

Parker & Co., 444 S. Com'l. Don't fail to see Parker about repairing your car. Expert mechanics at your service. All work guaranteed.

At Shipley's the ladies of Salem have satisfied themselves that they can get the finest spring and summer frocks, coats and dresses ever shown in this city.

CONCRETE POURING IS BEING RUSHED

First Floor of Bligh Corner Nearing Completion Under Double Shift

Work of pouring the concrete into the columns and walls of the first floor of the store part of the building on the corner of High and State streets has been completed. The building, being built by Frank Bligh at a cost of \$250,000, will contain theater, store rooms, and office rooms.

Forms to receive the concrete walls of the second floor are rapidly reaching completion. The rough flooring for the second floor has been laid.

Rough concrete flooring for the front part of the theater has been poured, and the work of placing the steel girders to support the various parts is well under way. A large 14-ton girder has been placed to support the balcony.

Another location being improved by Frank Bligh is the southeast corner of Ferry and High streets, where the auto service building is under construction. Most of the outside construction work has been completed.

Final coat of stucco, of a light buff color, has been applied to the outer walls of the main building, which is L shaped. On each corner tower the roofing is of red tile. The rest of the roofing is checkered asbestos, red and black.

On the corner is the pumping station. The gasoline pumps have already been installed. The frame for the roof over this part is nearly completed.

The Salem Hdw. Co., most progressive. Every accommodation given to those in need of best hardware supplies. Work and prosperity the motto. 120 N Com'l. (*)

Director's Department Store is building up a reputation for guaranteed merchandise; conducting a real department store; making steady progress, too. (*)

Chicago Finds Radio Has Aided Music Sale

CHICAGO.—Radio and the phonograph have extended the desire for individual musical accomplishment, if a consensus of reports from Chicago's music houses reflects general reaction.

The sale of sheet music was found never to be so great. The demand for band and orchestra instruments was never so brisk. The principal stimulus was declared to be the popularization of radio.

The statement of John Philip Sousa before a congressional committee that radio had brought with it a "listening public" which no longer bought nor played sheet music, was not echoed in these music stores. Representatives of the leading makers of musical instruments and the publishers of sheet music cited figures to show that the trade was growing steadily, especially since the perfection of radio.

Ulrich & Roberts, realtors, 122 N. Com'l St., know property values and make for you profitable investments. Will both save and make you money. (*)

D. H. Mosher, Merchant Tailor, is turning out the noblest and best fitting tailor made suits to measure. 100% business and professional me buy of Mosher. (*)

Astoria — Presbyterians will build new 65,000 church.

WORK BEING RUSHED ON JEWELRY STORE

Pomeroy & Keene to Have Fine New Quarters on State Street

Concrete work on the Chambers and Chambers building on High street between Chemeketa and Center streets is rapidly nearing completion. Most of the boards comprising the forms that received the concrete walls for the first floor have been removed.

Forms to receive the concrete for the walls of the second floor are nearly finished.

It is probable that the pouring of the second floor walls will be finished by the end of this week. The trusses to support the roof have been placed.

There will be a mezzanine floor constructed to be used as a separate department when Chambers and Chambers move their furniture business there from their present location on Court street

between Liberty and High streets. Now that good weather has set in work of construction has been making rapid strides. When the present site of the furniture company is vacated, it will be used by Krause and Lunsford as the site of the Salem Emporium.

C. A. Luthy, Reliable jewelry store. What you are looking for in jewelry. Where a child can buy as safely as a man or woman. Repairing in all lines. (*)

The Bake-Rite Bakery. Busy every day supplying best homes with bakery goods of all kinds: baked in a kitchen, clean as your own. 345 State St. (*)

WE CARRY THE FAMOUS LUCAS PAINTS AND VARNISHES



Step-ladders

Light Weight—Sturdy

No home should be without one. For sale at our retail store.

Call and see our display of Ladder Stools, Flower Pot Stands, Flower Boxes, Ironing Boards, Flower Bins, Kitchen Cabinets.



CHAS. K. SPAULDING LOGGING CO.
Telephone 1830 Douglas Fir Lumber Telephone 1830
Salem



Will Building Costs Go Still Lower Than They Are Today?

Some People Think They Will Many Others Think They Will Not The Fact Is Nobody Knows

One thing everyone knows In waiting for lower costs you are spending something more valuable than the money you may save, something that cannot be replaced.

That something is TIME—the years of your life. You may spend or lose your money and regain it, but the lost years will never come back.

Will the little that you may (or may not) save in money, in order that your estate may inventory a few more dollars, compensate you for withholding from yourself, your wife and your family the enjoyment of such a home as you and they want, and ought to have?

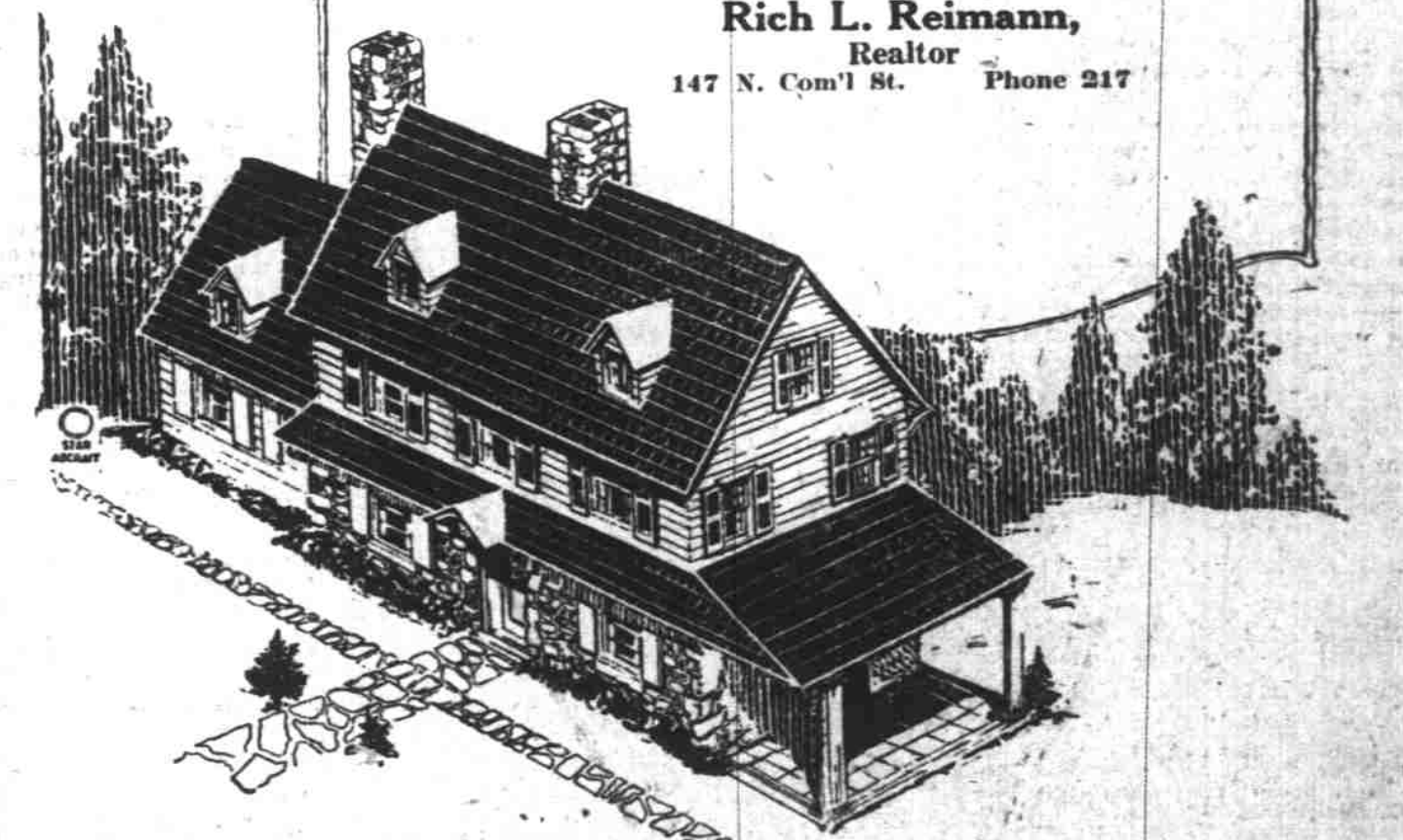
Except for the miser money is worth nothing beyond the satisfactions, comforts, pleasures and opportunities for service it can bring in the life we are living here and now.

An investment in a home is not a speculation, and there is no possibility of a loss where there is certainty of an abundant return in health and contentment.

If you are looking for a NEW HOME see

Rich L. Reimann,

Realtor
147 N. Com'l St. Phone 217



SALEM HIGHWAY TRACTS

UNIT OF EIGHT HOUSES JUST FINISHED ALL SOLD EXCEPT TWO

You might buy these houses with one half acre of ground on your own terms if you act quickly.

RICH L. REIMANN

147 North Commercial

Telephone 217

A Handful of Nails or A Carload of Lumber

Whatever your building needs, let us supply them—and at a cost you can afford. Whether you want to make a few repairs around the house or build a skyscraper, buy the materials from us.

COMPLETE SATISFACTION

Call on us for anything you need

GABRIEL POWDER & SUPPLY CO.

PAINT SHOP AND STORE
175 South Commercial
Telephone 728

LUMBER YARD
North Capital and Union
Telephone 2248

HOMES! HOMES! HOMES!

BUILT . . SOLD . . RENTED

Bulgin & Bulgin

Builders and Realtors.

275 State Street