

**DETROIT PLANS 204-FOOT SUPER-ARTERY**

Super-Highway Will be Tried Out in Attempt to Raise Speed of Travel

Unlimited speed for motor vehicles on 80-foot concrete roadways in each direction and four-lane express and local car lines between the motor lanes—that is the plan of the Detroit Rapid Transit Commission to relieve its city of motor traffic congestion. Other cities that have had their streets and highways flooded with motor traffic will find much to study in the plan that Detroit has evolved to solve its problem.

Thirteen thousand new cars—about one and more than 30 miles in length—have been sold every day since January 1, 1924. Of the total 1925 registration of 18,000,000 vehicles, more than 10,000,000 automobiles, motor trucks and buses have been placed in service within the past 26 months. The congestion, as a result of these enormous sales, has become steadily worse until now immediate action is needed if motor transportation is to continue efficiently.

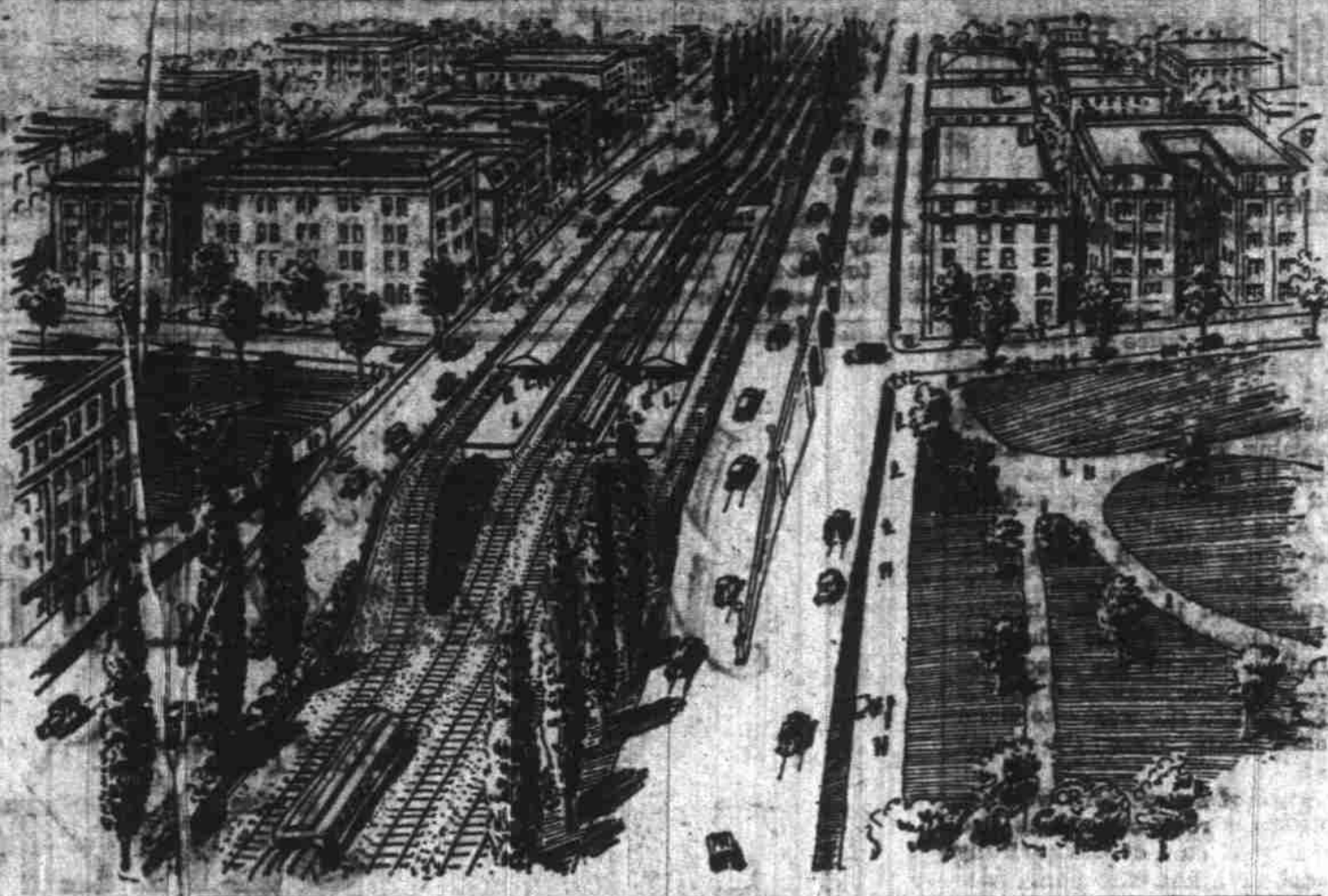
Highways paved only a few years ago have been subjected to traffic that is double, treble and even ten times greater than that which was anticipated. Large cities that formerly found a dozen or so outlets sufficient to care for whatever traffic that must use them now find that the ever-increasing number of automobiles seriously curtails efficient movement of traffic as a whole.

The result is that large cities everywhere must seek relief in the form of wider and more paved roads. Much good work has been done but the production and sale of motor cars continues unabated and congestion continues to grow more serious.

Seeking to solve the problem of its own city, Detroit's Rapid Transit Commission has brought forth a plan that may be the means of relieving congestion in all cities.

As revealed by the drawings, the plan contemplates a 204-foot wide Super-highway. Of this, four track car lines require 84 feet, while 80-foot roadways in each direction are provided for motor traffic. Speaking of its plan, the commission says:

"All the services utilizing the super-highway—local and express motor traffic, local and express rapid transit trains—will operate on one level on the surface between stations. But the various travel lanes will be properly defined and related so that vehicles can travel through the local roadways into the express lane for rapid distance movement, and out again through the local roadway when approaching their destination. The operation in the express lane will be continuous. Vehicles will merge into and flow



along with the stream and finally leave, but never cross it. It will represent the maximum of efficiency in motor vehicle operation.

"Wheel traffic cannot cross the rapid transit line at grade, but may pass under it at the half-mile intersections, and likewise pedestrians may cross by means of overhead or underground passages where conditions warrant such crossings. At stations located every one-half mile apart, more or less, both express motor traffic lanes and rapid transit tracks will be raised sufficiently to pass over the cross streets. Local motor traffic lanes will meet the intersecting streets at grade so that if they wish they may cross under the rapid transit and express motor traffic lanes at such points. Thus the rapid transit and express motor services will not be subjected to any crossing interferences. They can attain high speeds. This is a necessary and recognized characteristic of a rapid transit line. It should also be accepted as an essential feature of the motor traffic highways of the future."

**DODGE DEALERS TO GATHER IN DETROIT**

H. F. Bonesteel, Local Representative, to Attend Annual Meeting

Thirteen special trains, 7 from the east and 6 from the west, will arrive at the Michigan Central station almost simultaneously Wednesday morning bringing delegates to the Dealers' Annual Meeting of Dodge Brothers, Inc. and Graham Brothers. The con-

vention, probably the greatest of any kind to be held in Detroit this year, will bring together fully 2500 representatives of Dodge Brothers and Graham Brothers, many of whom will be accompanied by their wives and other members of their families. Every state in the union will be represented by a large delegation, and there will be a considerable representation from far corners of the world.

H. F. Bonesteel of the Bonesteel Motor company, Salem dealers for Dodge motor cars and Graham trucks, left during the week for Detroit where he will attend the convention.

The meeting will last three days, combining business and entertainment. Schedules have been arranged so that all the thirteen special trains will arrive at the Detroit station between 8 and 8:15 o'clock Wednesday morning, and the program will be continued from that time until Friday evening when special trains bearing Dodge Brothers and Graham Brothers officials and many of the visitors will leave Detroit for the New York motor show.

Immediately upon their arrival, the visitors will be taken in charge by the Dodge Brothers and Graham Brothers traffic and entertainment departments, and the ladies of the party will be taken at once to the Book-Cadillac and Statler hotels, where headquarters for the meeting have been established. For the men, cars and buses will be in waiting and a parade will be formed in the Station Plaza which will proceed through the business section of the city, with the Graham Brothers plant as its first objective. From information which has come ahead, this parade will be a colorful affair. Some of the organizations will bring bands, some original devices in banners are hinted at, and a football season atmosphere will be added by "college" yells which some of the delegations are known to have been practicing. There will be a police escort for the parade.

A feature of the convention will be a complete and attractive Dodge Brothers and Graham Brothers exhibit at Convention hall which will be open to the convention guests Thursday from 9 a. m. to 5 p. m. Luncheon will be served, and there will be music and other entertainment features. This exhibit, a complete automobile show, will be thrown open to the public Friday and

Saturday.

The annual dealer's banquet will be held in the ball rooms of the Book-Cadillac Thursday evening at 6:30 o'clock. Following the dinner guests will be taken to the New Detroit Theater, where there will be an unusual entertainment and addresses by several high executives.

For the ladies of the party the program for Thursday evening includes dinner at the Detroit Athletic club and a theater party at the Garrick.

**MORE MOTOR CARS THAN PHONES NOW**

Registration of Automobiles Exceeds That of Telephones in America

The 18,000,000 registration of automobiles for 1925 exceeds by more than 1,500,000, the total number of telephones in use today. As a general thing, the number of telephones in any one state is a good indication of the number of automobiles in use in the same state.

The northeastern section of the country has the most telephones, as well as automobiles, while southern and mountain sections of the country are lowest in both telephones and motor cars.

As short ago as 1912 the telephones exceeded automobiles by 80 per cent, the figures being more than 8,000,000 telephones against approximately 1,000,000 cars. Five years later in 1917, the difference was but 80 per cent in favor of telephones. In 1923 telephones and motor cars were tied in the race for supremacy, each having about 15,550,000 in use.

In 1924 the motor car forged ahead in the race and exceeded telephones by 1,000,000, while 1925 increased the motor car's lead to more than 1,500,000.

California, Texas and Ohio show a pronounced favor for cars over telephones, the figure for 1924 being: California, 950,000 phones against 1,300,000 cars; Texas, 520,000 phones against 800,000 cars; Ohio, 1,020,000 phones against 1,250,000 cars.

**REASONS WHY RADIO MUST HAVE GOOD "A"**

"Any old 'A' battery will not give best results on a radio set no matter if the set itself is the best on the market," claims Joe Williams, local Willard dealer. "An 'A' battery must be built for radio use, which has different requirements than automobile starting and lighting.

Some set owners have been using automobile batteries in "A" service, many of them rebuilt, although the requirements which an automobile battery is designed to meet are entirely different from those for radio "A" battery work. In radio "A" service, there is need of a constant voltage, otherwise, frequent retuning is required because of the sensitive character of

the apparatus.

In automobile service, on the other hand, ordinary fluctuations in voltage are not perceptible in results. In automobile starting and lighting batteries there is

need for a comparatively high rate of discharge. In radio "A" service the rate of discharge is comparatively low. This means that it is possible to use thicker, heavier plates in a radio "A" battery

and so greatly increase battery life.

Man's chief blunder is in making so many laws against his own interests.

for Economical Transportation



**Reduced Prices**

Now Effective

Touring	\$510
Roadster	\$510
Coupe	\$645
Coach	\$645
Sedan	\$735
Half-Ton Truck Chassis Only	\$395
One-Ton Truck Chassis Only	\$550

All Prices F. O. B. Flint, Michigan

**NEWTON CHEVROLET CO.**

Opposite City Hall

Salem, Oregon

QUALITY AT LOW COST



**See Our Special Exhibition of Improved Ford Cars Featuring the Latest Ford Equipment**

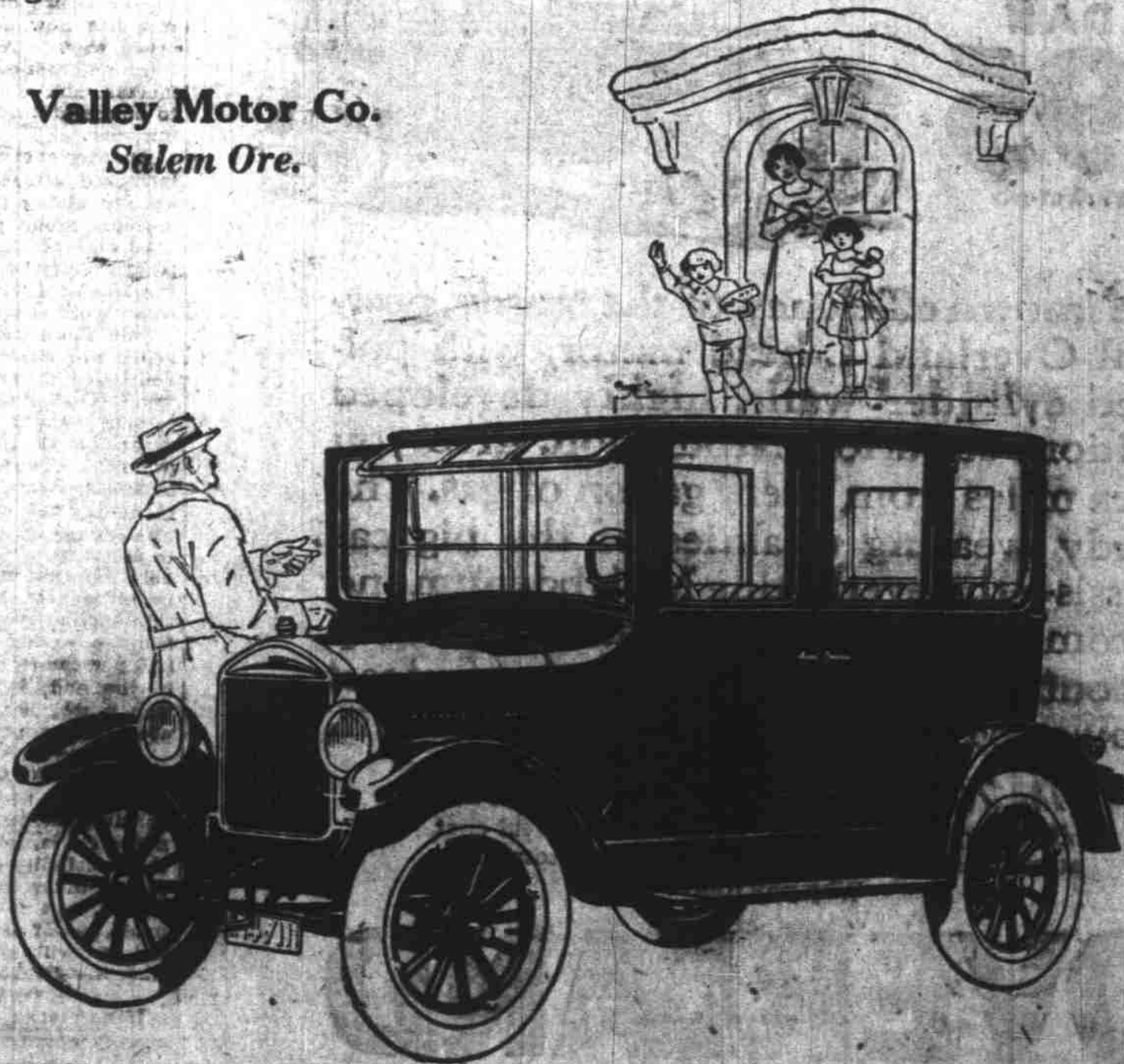
All this week we are showing the finest and most interesting display of Ford passenger cars the public has ever seen.

In addition to an exhibition of the improved Ford cars, we are featuring the latest Ford equipment. You will be amazed at the smartness and individuality of the various body types we are showing.

This is Ford National Show Week and all Ford Dealers are participating.

Be sure to see our display! Come any time this week!

Valley Motor Co.  
Salem Ore.



Ranabout	\$260
Coupe	520
Touring Car	290

THE FORDOR SEDAN

**\$660**

ALL PRICES F. O. B. FACTORY

**"SHIMMY STOPS"**

For FORDS

W. E. BURNS — DAN BURNS  
NOT BROTHERS — THE SAME MAN  
High Street at Ferry, Salem, Oregon  
Parts for all cars

With the New Year

**The New Ajax**

NASH BUILT

Has Just Arrived

A Six Cylinder 4-Door Sedan with all the beauty and popular design of the Nash line

Yet only **\$995** f.o.b. Factory

**Kirkwood Motor Co.**

314 North Commercial

Telephone 311