

Linen Industry in Willamette Valley to Build New Flax Market

Miles Linen Company, With Annual Output Valued at \$120,000, Opens for Twine and Thread Production—Oregon Linen Mills Representing an Initial Investment of \$50,000 to Operate 100 Looms and Perform Every Operation Leading To Final Manufacture of Fine Linens, Thereby Materially Increasing the Market for Locally Grown Flax—Early Vision of Vast New Industry Being Realized With Machinery for Operation Coming From England and Scotland—Plant To Be Housed in Concrete Structure, of Most Modern Type and Adequate Proportions

(Continued from page 3)
 trict flax and SPIN A THREAD THAT WOULD REACH AROUND THE WORLD.

One linen mill has been built in Salem; another is in immediate prospect, and several more are in sight. There will be more retting and scutching plants built. So it may be definitely stated now that we are well on the way towards the development of the linen industry, that will finally bring in \$100,000,000 new money annually, and employ, directly and indirectly, a million people. Perhaps a great many more, in time. The first successful machine flax pulling in the world on a considerable scale was done the two last seasons and the season before in the Salem district. There are 13 such machines owned here now; capable of taking the places of 80 men each in hand pulling.

We also grow here a superior quality of hemp; and this industry will soon be developed here—meshing in with the flax industry.

The Oregon penitentiary has a state flax plant, with the largest and finest scutching mill in the world.

The flibert is frost proof; the trees mature young; the harvesting is easy—crop falls off and all but harvest itself; is a "lazy man's crop," needing little attention after trees mature.

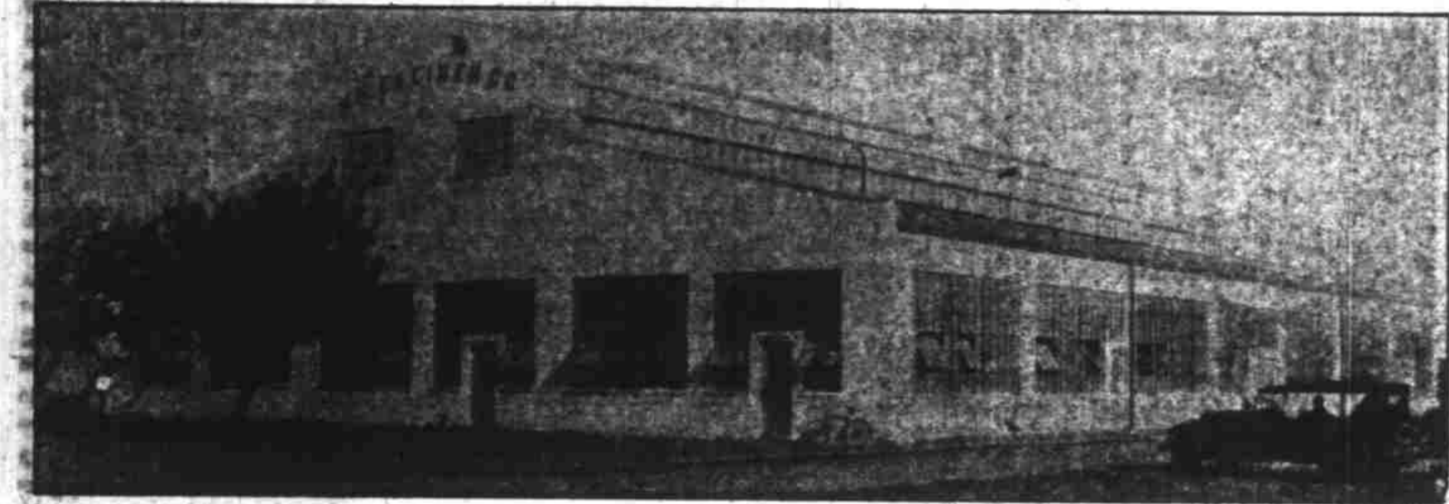
In years of high prices, it will be a bonanza crop, yielding from 3000 to 5000 pounds to the acre.



TYPICAL FLAX FIELD

Development of the linen industry is creating a new market for locally grown flax. Climate and soil has been declared by experts to be ideal for the production of flax. Materially increased plantings are expected to result to feed the mills located here.

The Filbert Industry
 Did you know that Salem is permanently the filbert center of



MILES LINEN MILL

One of the pioneers in building the linen industry in the valley, this modern plant began operation early in the fall. Equipped with the most modern machinery, it specializes in the production of linen twine and linen thread for the sewing of leather. Employing 30 persons, the value of its annual output on the present schedule will be approximately \$120,000.

the United States; that this district now grows more filberts and has more young trees and has more prospective filbert growers than any other section of the country; that this is the only district of the United States suitable for filbert growing, excepting part of western Washington and northern California; and that there is big money in filberts; that this is a crop that has a number of very important advantages and that there is vast room here for more filbert growers, who will take some of the risks of pioneers in the industry.

So, substantially, runs a Slogan in The Statesman of six annual editions.

The Salem district is the only section of the United States that has so far developed the filbert industry on a commercial scale.

Mr. Reed, of the bureau of nut culture, United States Department of Agriculture, Washington, D. C., visited the Salem district recently and he stated that we have here in the Willamette valley the finest filbert soil; also the most promising filbert groves anywhere in the United States.

The filbert industry has an outstanding number of advantages in this district, for instance:

here for mature trees, and sales have in some years been as high as 35 cents a pound. Figure it out for yourself.

Filbert trees are being set out here as fast as the proper nursery stock can be had.

The Walnut Industry

"Did you know that Salem is the center of a great walnut industry; that the Franquette and Mayette walnuts produced here are the world's best walnuts—with a quality and flavor found in no other; that carloads of walnuts now go out and trainloads will go out from Salem, the market center for walnuts; and that there is vast room for more intelligent walnut growers?"

The above words are familiar to readers who follow the Slogan campaigns.

The walnut tree comes into bearing early in this district, but it attains great age, and becomes more valuable each year, under the proper conditions found here, and with the right varieties. Black and other walnut trees planted here by our pioneers are lowering giants—and every one capable of earning interest on a large sum, if grafted over to a pure Vrooman Franquette strain. Large walnut

trees in California have sold for \$3000.

From the above, the readers may get an idea of the intrinsic value of a large walnut orchard; or even of a few trees, in the coming years. It will commence bearing the sixth year here, and increase rapidly thereafter.

It has been stated that if all the shade trees in Salem were bearing English walnut trees of the right varieties the sale of the nuts would pay all the taxes of the owners of city property.

Walnuts can be produced here cheaper than in California (a good deal cheaper); and they are worth more—sell at 2 cents pound higher for the best grades in the discriminating markets. And land prices are a good deal lower here.

The Strawberry Industry

This is a great strawberry district. For some growers, strawberries have been a bonanza crop. There have been yields here reaching as high as 24,000 pounds to the acre, but the average under the old methods has perhaps been a ton and a half to the acre. It is expected with new methods and varieties, and perhaps some irrigation, to bring this up to two to four tons to the acre.

The Salem district is going fast towards a 10,000,000 pounds annual crop of strawberries, and our manufacturing and marketing interests must prepare to take care of such a crop. Oregon is the leading strawberry state of the Union in tonnage canned and

barreled. Marion county is the leading strawberry county in Oregon and Polk, adjoining, is a close second. Salem surely has the true strawberry mark; and her premiership as the strawberry center of the world will depend only upon the facilities for properly handling them, keeping up with the growing of them in this district.

The Salem district also produces annually great quantities of strawberry plants for sale at home and for shipment to outside markets. We ship them in carloads.

The Apple Industry

Apple growing has been successfully carried on in the Salem district since the settlement of the country. There have been many apple booms. There is an apple tree on the Egan farm below Salem, of the Delicious variety, that is 77 years old; center stem 50 feet high; 50 feet limb spread; bears 50 bushels of apples a year. Nearly all varieties of apples do well in the family orchards here. But, for commercial purposes, nothing should be

grown in which we do not excel. We can excel in the Ortley, the Rome Beauty, the Winter Banana, the Grimes, the Delicious and others, and we raise as fine Gravensteins as the world can show.

Speaking from the commercial standpoint, it would be well for the Salem district if nearly every apple tree in all this section were of one of the above varieties. We can top the market with these and that is where the big money is in any industry.

The Raspberry Industry

The Salem district is a good raspberry country. It produces as good red raspberries as any grown, and there is no bush fruit line that is more certain of continued success here in the Salem district than is the raising of black raspberries; the blackcaps of commerce. We have a franchise on the black raspberry; or what amounts to a franchise; for the black raspberry persists here. We have bearing vines over 20 years old. This is not true of any other district in this part of the world. It is not true of west-

ern Washington, the great red raspberry country. The jam and jelly trade demands a lot of black raspberries. There is a market demand for increasing tonnages of black raspberries.

The Booming Mint Industry

The mint industry is on a boom and Salem is going to be headquarters for growing and marketing the crop of peppermint oil. Dan J. Fry, the Salem druggist, the largest buyer of crude drugs in the state, is in touch with one firm that will want 50,000 pounds annually—and the Salem district, from present indications, will soon be ready to furnish that much; and a great deal more.

The Oregon Mint Growers Cooperative association is active, and it proposes to build a refinery, to secure a larger benefit and a better standardization of the Oregon product, which now stands very high, and which sells to what amounts to a premium of \$1 or more a pound over the eastern product, owing to its superior quality.

So Salem is bound to be the center of the leading peppermint

oil district of the world—because the finest and richest mint oil in the world is produced here; an oil with 51 per cent of menthol content, against 36 per cent oil produced in Michigan, Indiana, and New York; and an oil that ranks at the top in flavor. Besides, our growers get more pounds of oil to the acre. It has gone to 85 pounds to the acre, and 50 pounds, to the acre is common. The present price is a boom price, \$27 to \$30 a pound. Some comfortable fortunes were made the past season by our growers. They can produce pep-

permint oil here at \$1.50 to \$2 a pound.

The growing demand for menthol in the candy and gum trades, and in drugs, etc., will push the industry forward. The Salem district is headed towards a million dollar a year peppermint oil crop; and it will not be long in arriving; and it will go just as much farther as there is a demand for the oil. Remunerative prices—because we have the peppermint oil soil and climate and know how, an organization. The acreage will be largely increased in this district this year.

(Continued on page 5)

NEW YEAR GREETING

Crating
 ..
 Local and
 Long
 Hauling



Fuel
 ..
 Storage
 ..
 Moving
 ..
 Transfer

143 S. Liberty :: :: PHONE 930

These are times to Plan --these the Materials to use!

To Know How

- 72 different kinds of Building Materials
- 31 different kinds of Concrete Products
- 10 different kinds of Sand and Gravel

can do the most good for you, see the

Oregon Gravel Company

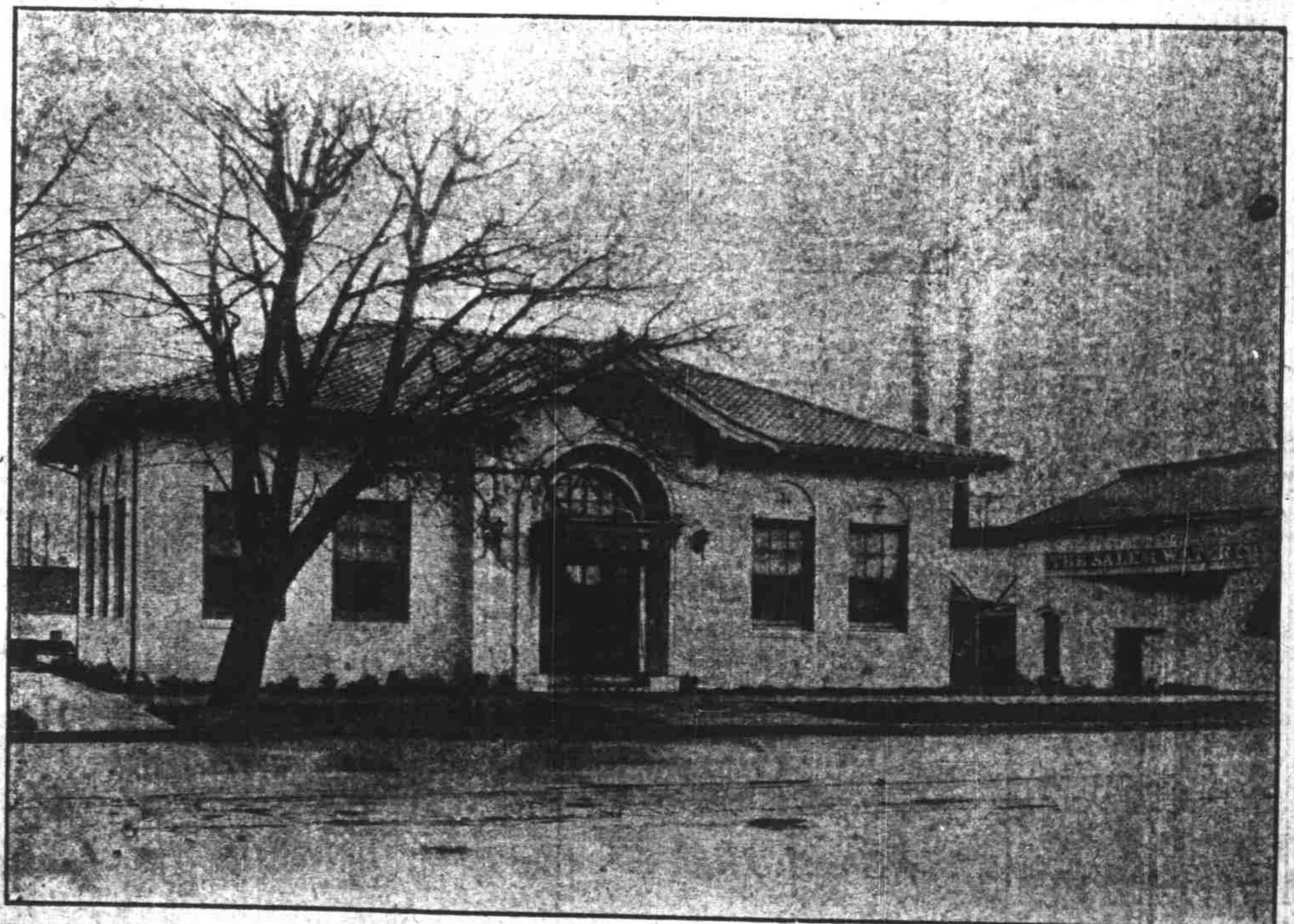
Hood at Front Street Salem

Sales Increase 2 1/3 times in Four Years.

We wish to extend to all our patrons the greetings of the season. May the year

1926

be Salem's Best Year



SALEM WATER, LIGHT & POWER COMPANY

What Will You Do With It?

A new year is before us—a chance to start over again, along the right paths.

The question is, what will we do with our chance—you and I and the rest of us? Will we take it—or will we wait another twelve months.

WEBB'S FUNERAL PARLORS
 Superior Funeral Service
 205 So. Church Street
 Phone 140

