

CHEV ROADSTERS USED STUDENTS FIND CARS OFFER CHEAP TRANSPORTATION

Today the three Rs of learning are "readin', rizin' and roadsters," or at least it would seem so judging from the number of students who dart about the streets in their snappy two-seaters.

High school and college boys, all being athletes at heart, have

taken overwhelmingly to the Chevrolet roadster for, with top tilted back, it permits an increased freedom of movement and a super-abundance of fresh air.

In the instance of the boy who is working out his own education this Chevrolet model is a special boon. To begin with it is "economical transportation"—a highly important factor to the chap who must count his nickels. It increases his earning power by allowing more time for duties and provides

rapid transportation to and from classes at the same time affording the pleasures to which every student is entitled during his recreational moments.

DRIVER WHO HITS CHILD IS GUILTY

Judge Holds Youngster Cannot Be Guilty of Contributory Negligence

CHICAGO, Dec. 12.—Any automobile driver who strikes a child, six years of age or under, on a public highway or street is immediately responsible civilly and criminally for the accident, according to a decision of the Chicago municipal court which has just been confirmed.

In that decision it was held that a child six years of age or under cannot be guilty of any contributory negligence, inasmuch as it is not really responsible for its actions, and that the entire onus of an accident involving such a child rests squarely upon the shoulders of the driver.

One of the effects of that decision in Chicago has been to impress upon the motorist the increasing necessity for absolutely safe driving and it has been reflected in the increased use of non-skid chains to aid in assuring car control on the slippery streets of the wintry, windy city.

Private motor car owners are following the example set by owners of taxicabs who do not permit their drivers to compromise with safety and at the first indication of skiddy streets chains of the Weed type make an immediate appearance.

CHEVROLET PLANT TO SET NEW MARK

Production for December Expected to Establish Production Record

Before the end of December the Chevrolet Motor company will establish a new record for the entire automotive industry by attaining a production during the year 1925 of more than 500,000 passenger cars and trucks.

This production for a single year never before has been approached by any other manufacturer of selective transmission automobiles. This year Chevrolet will exceed its previous record production by 60,000 cars.

The achievement of a half million production in a single year culminates a series of records set by the Chevrolet Motor company during 1925. Among these was the building of the two millionth Chevrolet which came early in September from the assembly lines of the central factory at Flint, Mich. This record production of 2,000,000 cars has been achieved by no other manufacturer of three speed transmission automobiles.

The half million Chevrolet total for this year represents a greater number of units than was built by the company during the entire eight years of its existence. Chevrolet's total production to date is greater than the number of cars built by all automobile companies during the first 20 years of the industry.

The phenomenal 1925 total is the result of a series of record-breaking months during which production consistently remained far above the previous marks for corresponding periods in other years. Month after month tentative production schedules proved inadequate to the requirements of the Chevrolet sales department. Ignoring previous seasonal declines, public demand continued unabated through the autumn and into the winter. The tentative production schedules were increased and the factories then proceeded to surpass even the revised schedules.

EUROPEAN MOTORS ADOPT NEW BRAKES

97 Percent of Cars From Continent Are Using Four-Wheel Equipment

The belief of European car manufacturers that mechanical 4-wheel brakes provide the most positive braking control was again emphasized by the exhibits at the recent Olympia automobile show in London. Virtually all the cars exhibited were equipped with 4-wheel brakes, and 97 per cent of these brakes were mechanically operated.

American car builders consider this significant, as the Europeans have been experimenting with 4-wheel brakes of all types for more than 20 years and this almost universal adoption of mechanical 4-wheel brakes is the result of that experience.

While 4-wheel brakes have only recently been generally adopted in America, the same preference for the mechanically operated type is evidenced by such makers as Packard, Pierce-Arrow, Gardner, Buick, Nash, Cadillac, Rickenbacker and others. The giant busses operated by the Yellow Cab company and virtually all taxicab fleets are also equipped with 4-wheel brakes of the mechanical type.

The automobile has a new use in the American army in the form of a "transcontinental car." It is a Chevrolet touring and employed for the rapid transportation of officers during maneuvers.

SEAL LIGHTS SEND 1926 BEAMS AFAR

Work to Be Done Depends on Support Given Sale During Next Few Weeks

Christmas Seal Time is here again, and you are already doubtless familiar with the design of the 1925 seal. It shows two candles set in the traditional holiday season below a red double barred cross, the official emblem of the anti-tuberculosis crusade throughout the world.

About 300 years ago Shakespeare wrote in the "Merchant of Venice" about a candle throwing its beam like "a good deed in a naughty world!" Many conditions that have changed since Shakespeare wrote in 1598. Three hundred years ago even good deeds meant less than they do now for people lived shorter lives to profit by them. The average human life

then was only 33 1-2 years. Scarcely long enough to become well grown up, certainly not long enough for that rare enjoyment of being a grandparent. Disease then raged in many forms and decimated humanity with terrifying epidemics. Modern science was unknown.

years have been added to the duration of the average man's life. Think of it, twenty-one years more to enjoy the increasing marvels of these modern days! Seven of these extended years, about one-third of the whole gain in human existence since Shakespeare's time, have been added since the development of the

Christmas seal only 18 years ago. The good deeds the seal represents have done their share in lengthening human life by helping to subtract 100,000 names from the annual death roll of tuberculosis in the United States, for the death rate from that disease is now one-half what it was twenty years ago.

The Oregon Tuberculosis Association finance its work almost entirely by the yearly sale of Christmas seals. Just how far the Christmas seal will be able to spread its light this year depends on how many seals you and I and all of us buy and use on holiday letters and packages.

SALE OF TIRES

Slightly Damaged by Smoke and Water

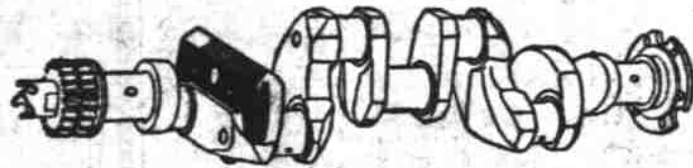
MONDAY

December 14

Ira Jorgenson

Corner High and Ferry Streets

What is the Harmonic Balancer?



Why is this new Oakland feature creating such wide-spread interest? Why is it regarded as the year's outstanding advancement?

The Harmonic Balancer is an entirely new engineering development, pioneered by Oakland, and rendering the Oakland Six engine unmatched in freedom from vibration at all speeds.

This remarkable feature does not merely dampen vibration—it prevents vibration. It makes use of a simple natural law to neutralize any twisting of the crank-shaft under repeated piston impulses and thus stops torsional vibration at its very source.

But the Harmonic Balancer is not all. The new Oakland Six embodies more than 100 other improvements including Four-Wheel Brake refinements, Air Cleaner, Oil Filter, and Full Pressure Oiling System—yet prices are \$70 to \$350 lower.

Roadster \$975 (Old Price \$1095) Landau Coupe \$1125 (Old Price \$1295)
Touring 1025 (Old Price 1095) Sedan . . . 1195 (Old Price 1345)
Coach . 1095 (Old Price 1215) Landau Sedan 1295 (Old Price 1645)

All prices at factory. — General Motors Time Payment Plan, hereafter the lowest in the industry, has been made still lower. You can now save as much as \$40 to \$50 in your time payment costs.

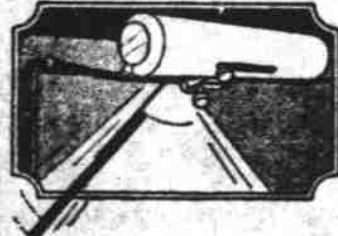
VICK BROS.
High Street at Trade

OAKLAND SIX
PRODUCT OF GENERAL MOTORS

Try Us for Your Auto Needs

AUTOMATIC WINDSHIELD SWIPES

Special \$2.40 each
Regular \$5.00



LUGGAGE CARRIERS

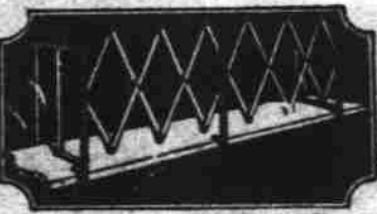
Special 85c each
Regular \$1.45

FORD REFLECTORS

Special 65c each

FORD O. S. STEERING WHEELS

Special \$2.20 each
Regular \$4.00



WINDSHIELD WINGS

Special \$3.00 pair
Regular \$5.00

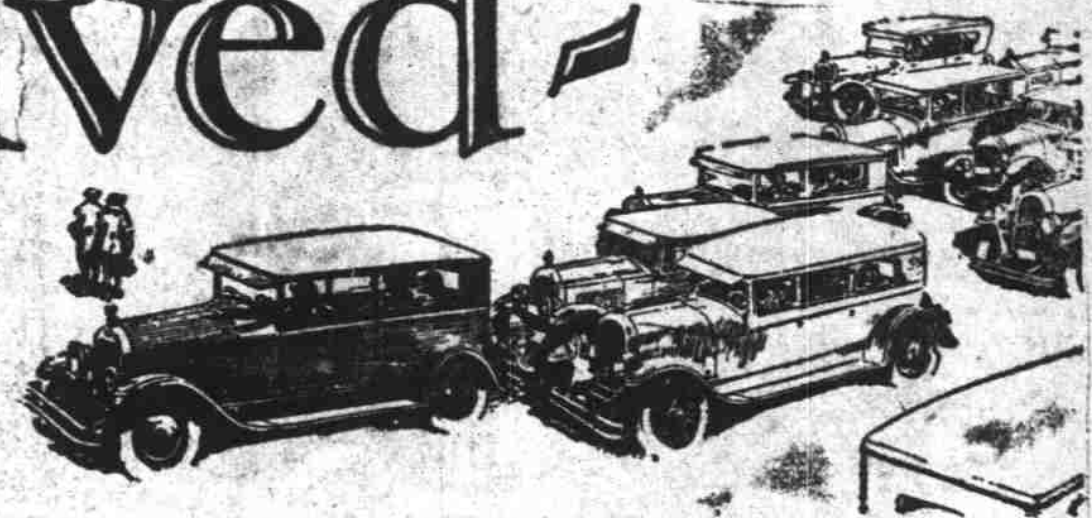
Special on New Tubes

30 x 3 1/2	\$2.25	33 x 5	\$3.75
32 x 4 1/2	\$3.40	33 x 4	\$3.40

MIKE'S AUTO WRECKING HOUSE

NEW AND USED PARTS FOR CARS AND TRUCKS

Arrived



THE new-day car is here—and it's a Jewett. It is the answer of one of the automotive industry's oldest, strongest and most successful organizations to today's vital motoring needs and problems.

No surface comparison can adequately gauge this car's worth. Measure it instead against the situations and emergencies of driving.

Begin, if you like, with the severest test of all—take The New-Day Jewett into close-packed city traffic.

Dart in and out—shoot swiftly ahead of the jam—stop with soft smoothness—park in spaces you would have thought impossibly small!

Realization will come quickly—that here is a car, marvelously responsive to your touch, which takes instant advantage of every opening, gets

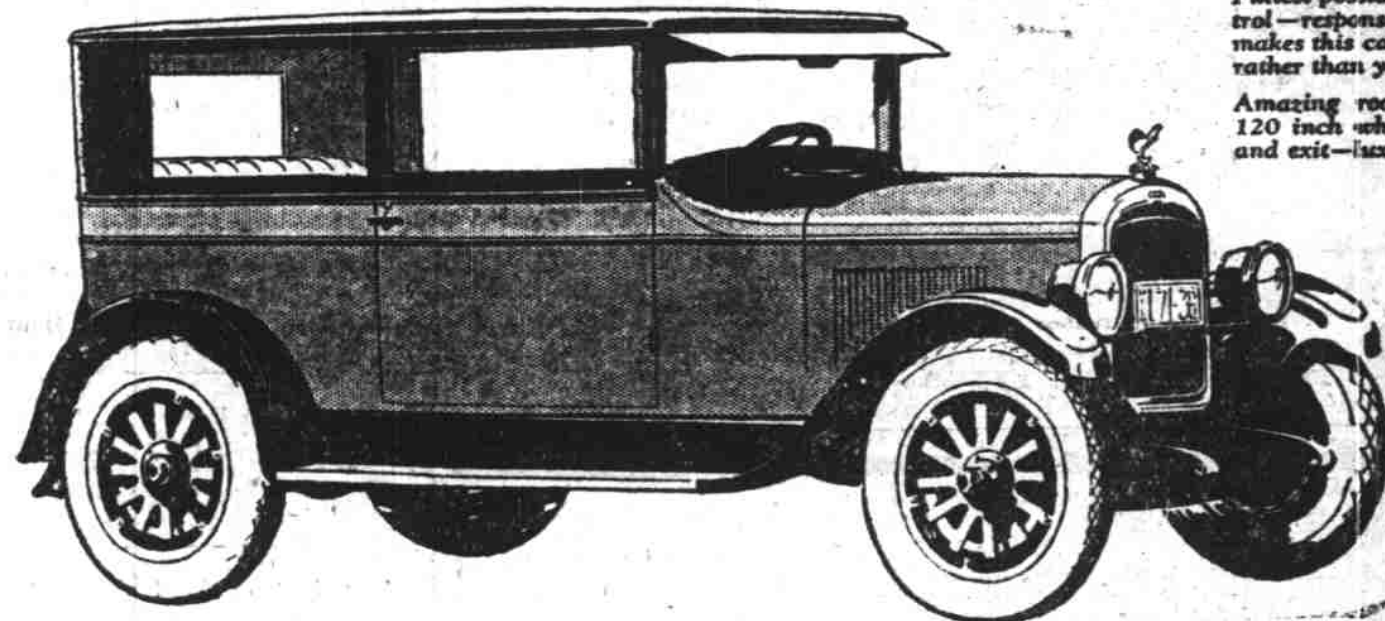
you through streets that seem impenetrable, lets you come and go as you please where ordinarily you would never try to drive. A New-Day Car For New-Day Needs.

Then leave the crowded streets and seek unfrequented country roads where The New-Day Jewett will reveal a quality of performance which not even preceding Jewetts, acknowledged masters of the open road, can surpass.

After years of preparation, The New-Day Jewett is here—ready for you to see it and drive it.

Let nothing prevent your seeing this epochal new-day car without delay! And do not stop with a casual inspection, for the better you learn to know this car the more you will appreciate its unusualness—its right to be known as "The New-Day Car For New-Day Needs."

The New-Day
JEWETT SIX



The New-Day Car

A modern, high-efficiency motor—6-cylinders—with a flaming "pick-up" that shoots you out of tangled traffic in the flick of an eye.

Paige hydraulic 4-wheel brakes, bringing you to cushioned rest almost instantaneously from any normal driving speed.

Fulllest possible development in ease of control—response to wheel and throttle that makes this car seem to answer to your wish rather than your touch.

Amazing roominess—more than in many 120 inch wheelbase sedans—easy entrance and exit—luxurious comfort.

Clearlest of clear vision that reveals the unwary pedestrian and makes it impossible for another car to approach unseen.

New accomplishments in economy—of first cost, operation and upkeep.

And Jewett's lowest-priced car price.

All this made possible by 17 years of Paige experience and with high quality certified by standards from which Paige has never deviated.

TRUMM MOTOR CAR CO.

Phone 959

Open Evenings



A Fellow Townsman Who
"AIMS to PLEASE"

You'll find him all about you, close to your home and handy to your place of business. You can spot him by his attractive green-and-white service station or garage, and by the famous green-and-white signs that announce his products.

He's the Authorized Independent GEN-

ERAL Dealer, and his name is legion. Wherever you find him it will pay you to know him, because he's a fellow townsman of yours and he "aims to please." His business is his own, and he is selling old-fashioned, modern-process GENERAL Gasoline because he believes in it.

GENERAL Products Are Sold Only by Authorized W. R. Speck, Dis. Independent Dealers at the Green-and-White Sign Tel. 2102 Salem, Ore.

"Fill Up Your Tank and Let Your ENGINE Decide!"

GENERAL GASOLINE
and Lubricants