

## RADIO CHATS WITH Powel Crosley Jr.

The problem of broadcasting over an area where the same language is spoken, such as in the United States for example, is comparatively simple.

On the European continent, however, the programs of any one country can easily be heard in six other nations. In India, where broadcasting is getting a start, there are 19 different languages.

These latter facts give food for serious thought. Will radio be the means of bringing about a universal language, which would undoubtedly lead to a brotherhood of mankind and possibly lasting world peace? If not this, at least it seems that one or two of the present spoken languages will dominate in international radio programs, and through this domination one or more of these languages will become universal.

If either of these two suppositions occur, the result would seem to make for better relations between nations. People who understand each other thoroughly sel-

dom war upon each other. Prejudices are broken down and national points of view are appreciated. The radio is just another step which is making for better world understanding.

This movement was launched with the steam locomotive, and has gained impetus through the steamboat, the motion picture, the motor car and the airplane.

Two recent events indicate this world neighborhoodliness will be extended. One is the arrangement for international broadcasting between this country and England in 1926, and the other is the request of the Soviet in Moscow for the introduction of American radio apparatus.

In the light of the marvelous mechanical development in the last quarter of a century, it is not presumptuous to picture world-wide broadcasting, with the necessary adoption of one universal or three or four dominant languages as the medium for these programs.

## Transocean Radio Movies Soon, He Says



Within a few years motion pictures of important events in Europe will be transmitted instantaneously to the United States by radio, says C. Francis Jenkins, Washington, D. C., inventor, who is endeavoring to perfect a radio movie transmission apparatus. Photos show Mrs. Jenkins and one of his newest devices, a camera that makes 4,000 motion picture exposures a second, recording a dive.

all gasoline, comparative freedom from carbon troubles and fouled spark plugs. A quick get-away, regardless of temperature conditions, is claimed to be one of the results of utilizing the distillator.

Besides the two types of chassis, Dorris makes three types of standard bodies—the parlor car, the sedan and street car, or passenger type. The L6 coach chassis provides for a body with a seating capacity of 25 to 30 passengers; the M4 coach chassis provides for a body carrying 18 to 21.

The Dorris exhibit includes a parlor car coach seating 25 passengers, with a smaller compartment seating nine more, at the rear, available as a smoking compartment or for a private party. A sliding door, with glass upper half, closes this compartment from the forward section of the coach.

Upholstery is in real Spanish, maroon leather. Each individual wicker chair is fitted with an air cushion, for additional easy riding qualities.

### STUDENT PRESS WELCOMED

EUGENE, Or., Dec. 4.—Five hundred high school editors, reporters and presidents of student bodies in Oregon were welcomed to the university of Oregon and the annual press conference here today. Dr. H. D. Sheldon of the administration committee made the opening address.

## WALTER P. CHRYSLER'S TRAFFIC TALKS

### Berlin Tries Electric Traffic Signals

The person who goes to Berlin for the first time is impressed by the fact that in Paris and London and New York one sees so many more cars on the streets. To be sure there are street intersections in Berlin where traffic congestion is very heavy, but the congestion cannot compare with what New York and Paris experiences every day.

Berlin sent its traffic commissioners to America to study traffic and they returned to install electric signal systems. The sys-

tems to date have been found fairly satisfactory.

To an American the motor cars of Germany seem very heavy. The American in a taxicab gets the impression that his driver hasn't his car under anything like the control that an American driver would have. The cars are big and heavy and one might say cumbersome.

Germany has not yet experienced sufficient vehicular congestion to attempt synchronized control. But all such systems can be adopted in cities where streets do not run at right angles.

The German police officer is an

## BEAUTY AND THE BEASTS



Wherever Lady Diana Manners goes, she takes her Crosley "Pup" radio set with her. This picture shows her in the act of tuning-in, while the funny little puppy on the right of the set, just looks on and grins. This unusual photograph was taken while the actress was waiting to don her robes for the part of the "Madonna" in the play, "The Miracle."

## World-Wide Demand

Graham Brothers progress in the export field is no less astonishing than their continued advance in the domestic market.

Graham Brothers Trucks were first shipped abroad in volume in 1922. This year's exports will exceed those of 1922 by fully 1300 per cent!

American business men, seeking dependable transportation at low cost, found it in Graham Brothers Trucks.

Foreign merchants everywhere have been quick to follow the lead of the thoughtful thousands here at home.

BONESTEEL MOTOR CO.  
474 South Commercial

# GRAHAM BROTHERS TRUCKS

SOLD BY DODGE BROTHERS DEALERS EVERYWHERE

## HOW LONG DOES A TRUCK ENGINE LAST

Question Is Answered in Affidavit Sworn to Before Notary Public

George Warma, secretary and treasurer of the Superior Bus company, being duly sworn, discloses and says that the Graham Brothers bus, equipped with Dodge Brothers motor No. 359-272, purchased from Oliver C. Joseph, Dodge Brothers dealer of Belleville, Illinois, put into service May 1, 1924, has covered a total of three hundred eighteen thousand five hundred miles up until March 11, 1925, when it was turned in to Mr. Joseph on the purchase price of a new Graham Brothers bus.

During this period of service the motor required the following repairs and replacement parts: Two sets of pistons, three star-

efficient handler of traffic. But he has no traffic to handle such as can be found in other countries. The student of motor vehicular traffic in going from country to country finds the same problems. And one of the commonest of problems is to teach the pedestrian not to take chances. There is no reason why persons should try to dart in front of rapidly moving vehicles but they do it. It can be seen any time in most any city. You see it in every country.

All countries are looking to America for the best plans for working out traffic difficulties. America leads the world in the manufacture and registration of motor vehicles and America leads the world in solving the problems which have arisen since the motor car has appeared on the streets by the thousands.

### SENATE ADJOURNS

OLYMPIA, Dec. 4.—(By Associated Press).—Ending their deliberation after acting upon ten of the bills on the calendar and confirming Governor Hartley's "cabinet" appointments, members of the senate adjourned this afternoon until 1 p. m. Monday.

### Don't Wait Till It Freezes

Fill Your Radiator Now With Whiz-Anti-Freeze

BARRETT BROTHERS GARAGE and service station

1928 and 1929 North Capitol

ter chains, two sets piston plus and bushings, distributor gears, piston rings, two sets valve guides, valve lifters and valves, motor gaskets, water pump and fan shaft replacement parts, clutch and transmission parts.

The total cost of parts necessary for replacement amounting to \$95.25.

This bus was operated on routes—O Fallon to Belleville, Belleville to Mascoutah, Belleville to Scott Aviation Field and num-

erous special trips; it was out of service for repairs and adjustments a total of five days during this period. No special attention was ever given other than daily routine inspection, lubrication and adjustments.

Since purchasing this original bus we have from time to time added to our equipment and now have nine Graham Brothers buses and are using this equipment exclusively.

# Philco Wet 'A' AND 'B' Batteries

The Radio Battery That Will Give You More For Your Money

ASK ABOUT PHILCO

## SOCKET POWER

For Your Radio Set

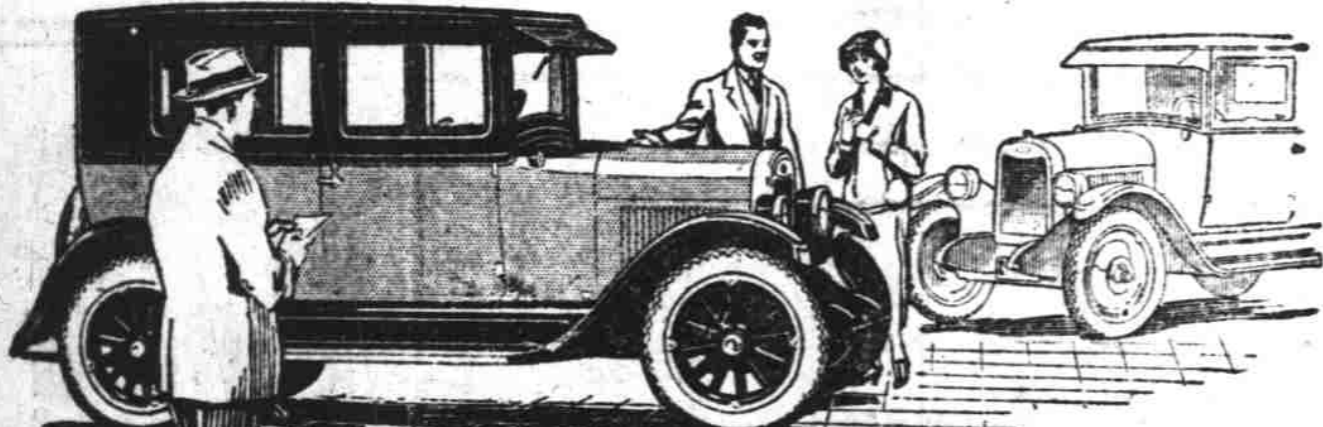
Philco Batteries for All Makes of Cars

AUTHORIZED ELECTRICAL SERVICE on Nineteen Different Makes of Cars

# E. H. BURRELL

Battery and Electrical Service  
236 NORTH HIGH STREET — PHONE 203

for Economical Transportation



# Quality determines whether the price is economical

Highest quality materials and construction alone give you fine car performance over a long period at low cost for upkeep.

Only the most modern body design and a finish of permanent luster can keep your car looking well for years.

And that's what you get in a Chevrolet! Quality design, quality construction, quality appearance—and many quality features the equal of which

you cannot find in any other car at Chevrolet's price.

You get Duco finish in smart colors. You get Fisher bodies on all closed models. You get smart, modern, snappy good looks plus the power, permanence, and dependability that make Chevrolet meet your highest ideals of economy.

Come in—let us show you why half a million Chevrolets were bought this year.

### The Coach

\$695

- Touring \$525
- Roadster 525
- Coupe 675
- Sedan 775
- Commercial Chassis 425
- Truck Chassis 550

ALL PRICES F. O. B. FLINT, MICH.

NEWTON-CHEVROLET CO.

Opposite City Hall

# QUALITY AT LOW COST

# ATWATER KENT RADIO



In many a home this year, Christmas cheer will be year-round cheer. An Atwater Kent Receiving Set with an Atwater Kent Radio Speaker is a gift for the whole family to use every day of every month.

"The Yule Log is a Station Log this year"

IF YOU are undecided about which make to choose, think of these facts:

Atwater Kent Receiving Sets and Radio Speakers are easily tuned and let you easily log your favorite stations.

—are the result of a quarter-century of experience in making precision electrical instruments.

—are built for perfect all-round service, sacrificing no one feature of good performance to over-emphasize another.

—are made in the largest radio factory in the world.

Hear an Atwater Kent demonstration. Ask your friends who have owned Atwater Kent sets and lived with them. Then make your decision.

On WWJ tonight!—The Atwater Kent Radio Artists are on the air tonight—and every Thursday night—at 9 o'clock Eastern Standard Time. We think so much of this good program of good music that it is broadcast over all these stations:

- WEAF, New York
- WFL, Philadelphia
- WGR, Buffalo
- WJAB, Providence
- WCAE, Pittsburgh
- WWJ, Detroit
- WBEL, Boston
- WSAI, Cincinnati
- WOC, Davenport
- WCCO, Minneapolis-St. Paul

Hear it tonight and you will agree that no finer program goes on the air at any hour of the week!

# VICK BROTHERS

High Street at Trade