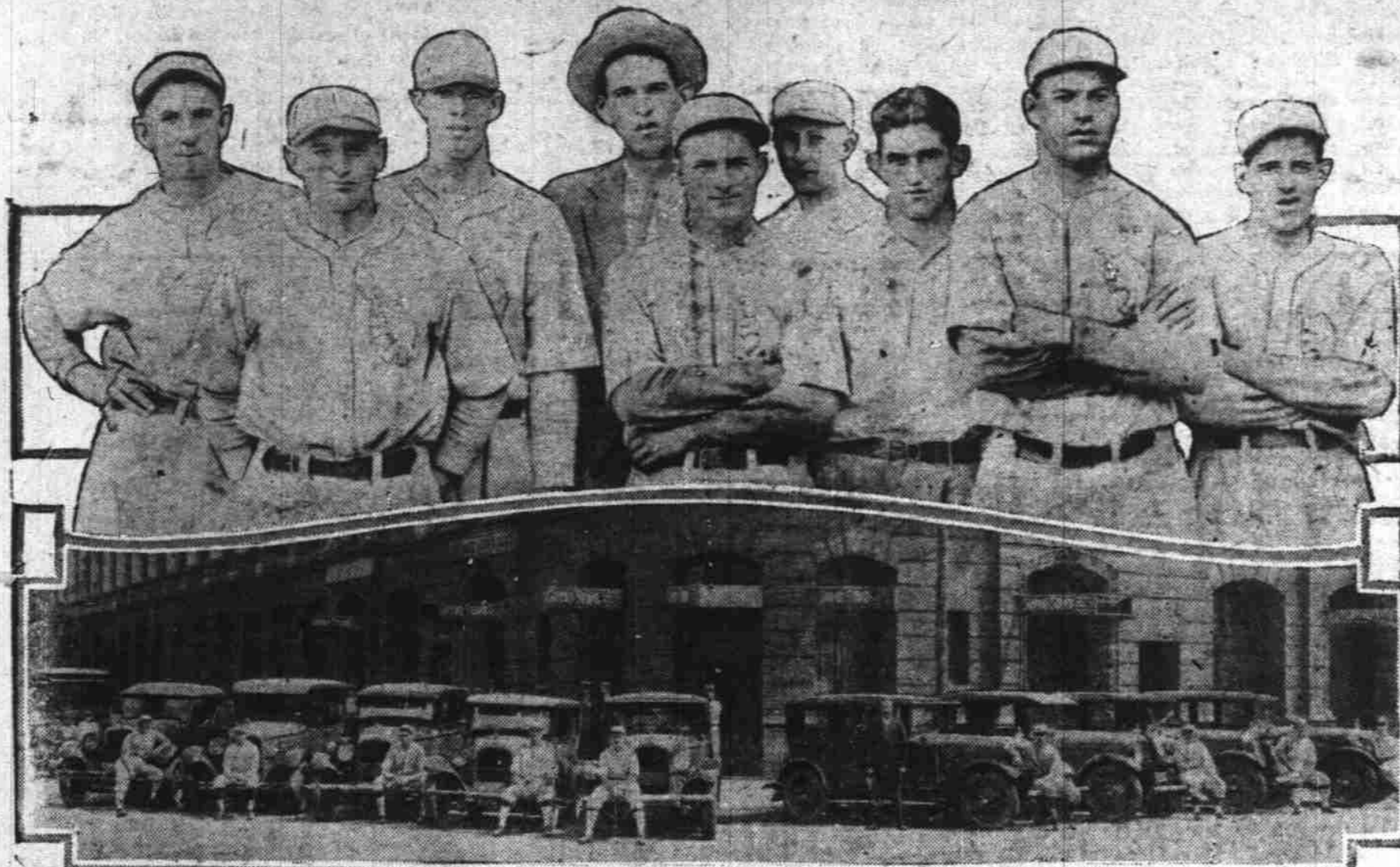


# The Athletics Have "Gone" Nash



And now the Athletics have gone Nash. Nine members of Mr. MacGillcuddy's Philadelphia Athletic have joined the ranks of Nash owners. The batting order is as follows:

Max Bishop, advanced six Victoria; Sammy Hale, advanced six 4-door coupe; "Lefty" Groves, advanced six sedan; "Mickey" Cochran, advanced six sedan; "Cy" Perkins, advanced six road-

ster; Jimmy Pool, advanced six sedan; "Chick" Galloway, special six sedan; Baumgartner, special six sedan; "Slim" Harris, advanced six sedan—a whole team of Nash-ites.

It is rumored that this all-Nash contingent, with Harris, Baumner and Perkins in the outfield, Groves in the box and "Mickey" behind the plate, are going to challenge the rest of the Mack

brigade to a game.

And if this battle does come off, you don't have to guess on which side J. G. Roberts, Philadelphia Nash distributor, is going to place his money.

"It is only fitting that the Nash should be the favorite car of the athletes," claims Mr. Roberts. "The long sweeping Nash lines and the smooth, powerful performance suggest immediately the

qualities of youth, spirit and coordination that have been responsible for the good showing of the Mackmen this past season.

Incidentally, those who have seen the Mackmen in action and have marveled at the towering Gothic construction of Pitcher "Slim" Harris, will never have any doubts as to the general spaciousness that characterizes the interior of the advanced six sedan

## UNSEEN "LEAKS" DRAIN AUTOIST'S POCKETBOOK

Drivers Neglect Many Factors That Affect Gasoline Economy

BY G. CLARK MATHER  
Chief Engineer, Paige-Detroit Motor Car Company

If you discover leak in your gasoline tank, you have it stopped at once. The expense of the repair work does not deter you, because you realize that the leak is even more expensive.

But how about the unseen leaks that drain your pocket-book just as surely as a hole in your gas tank?

The fact is that many motorists are suffering from such leaks, and that the leaks could be prevented at slight expense compared with the loss they cause.

Anything that prevents the owner from obtaining the maximum mileage for each gallon of gasoline is equivalent to a gasoline leak.

Even if the owners are careful to the extent of having their carburetors properly adjusted and their valves correctly timed, few of them realize the loss they suffer by ignoring other factors of fuel efficiency.

If you would obtain the most miles per gallon, check the following items:

Desr adjustment or choke rod improperly set.—Many choke valves are faulty set, so that when the control is in the forward or wide open position the choke

valve will be at a slight angle, restricting the flow of air and increasing the quantity of fuel used. Be sure that when the choke is in the running position the valves is wide open.

Leaky connections from the tank.—Examine the lines to the vacuum tank and to the carburetor.

Fuel in float chamber.—Make certain that the level of the fuel in the float chamber is not too high.

Timing of distributor.—One prevalent cause of high fuel consumption is incorrectly timed distributors. In general, if the distributor is so set that, with the spark in the full advance position a slight "ping" is noted upon sudden acceleration with wide open throttle, this cause is eliminated.

Carburetor or manifold loose.—These conditions are quite often responsible for defective carburetion. Also, gaskets at these two points are sometimes affected by the grale of fuel used and cause air leaks.

Under-inflation of tires.—This has an appreciable effect on gasoline mileage.

Operating temperature of motor.—When cold weather approaches it is well to provide a radiator cover or some other means to insure operating at high enough temperatures so that rea-

sonable efficiency will be obtained.

Brakes—The effect of dragging brakes on fuel economy is much greater than the average owner would believe. Be sure that the brakes are free and the results will show up in improved performance, as well as better economy.

Speedometer reading.—Some cars claiming extremely high gasoline mileage will be found actually not to have as great economy as claimed, due to incorrect speedometers. Some speedometer drives are so proportioned that the indicated distance and speeds are in excess of facts.

If the foregoing items are given some attention, the owner will find himself well repaid, not only in lessened fuel bills, but in improved operation of the car and less frequent need for overhaul due to carbon formation.

Improved Playgrounds to Be Awarded Cash Prizes

ASHEVILLE, N. C.—A national contest for the improvement and beautification of playgrounds was announced here today at the principal session of the Twelfth Recreation Congress.

The object is to encourage the beautification of the 5,006 public outdoor playgrounds in the United States and Canada, all of which are eligible contenders. The contest, it was stated, is a part of a general movement to beautify recreation areas.

The Harmon Foundation of New York City offers three awards of \$500 each and 30 of \$50 each to those communities whose playgrounds show the greatest progress in beautification during the period of the contest, ending November 1, 1926. In addition, nursery companies will give the winning playgrounds 33 prizes of \$50 each in nursery stock.

The Playground and Recreation association of America will administer the awards. All entries must be filed by December 1, 1925. Playgrounds, athletic fields, and other spaces used primarily for active outdoor play and conducted by non-commercial groups are eligible to the competition. A community may enter as many playgrounds as it wishes but not more than one award will be made in each community.

presented to three members of the crew who manned the small boat, with Kennedy and Buckley, in which 22 members of the crew of the Timpson were transported through hurricane seas from their crippled ship to the Atlantida.

Markets With Eskimos by Auto for First Time

HERB LAKE, Man.—Far to the north of here, a small automobile chugs its way over the ice and snow, the first vehicle of its kind to invade the land of the Eskimo.

It was taken into the far north by John Harris, who has returned to his home there after marketing a large number of furs here.

On his visit to civilization, Harris brought his Eskimo wife and three children, "just to give them a treat," and if wide and wondering eyes were a criterion, it was a treat for them.

When he returned, he took with him the small automobile, besides a large stock of provisions and goods, to be used in trading with the natives. So far as is known here, it will be the first automobile in this section of the north. Harris also took a power boat built in sections, and when

## "Living Corpse," Immune to Pain, to Show U. S. Thrill Repertoire



U. S. is soon to see exhibitions in "Eastern occultism" of Taha Bey, Egyptian fakir, which have been thrilling Europe for a year. Performing in vaudeville theaters, he allows knives to be stuck into his body and lets himself be "buried alive" while in cataleptic trances. Many spectators, moved to frenzy by the highly emotional performances, proclaim Bey a miracle-worker, but doctors familiar with methods of fakirs and dervishes say that their art is simply an acquired species of self-hypnotism which permits them to withstand pain and plunge themselves into an artificial state of asphyxia.

Rescue of Crew Told in Fewer Words Than Praise

NEW ORLEANS.—Capt. Robert Laird of the Honduran steamship, Atlantida, is a man of few words.

The master of the Honduran vessel required fewer words to log the rescue of a crew from an American vessel in distress than needed by the president of the United States in inscribing the appreciation of the government in a watch presented Captain Laird.

"Much lightning, 3 a. m. Sighted Timpson in distress, 2 p. m. Rescued. Crude oil to quiet waves," says the Atlantida's log.

Captain Laird sailed from his New Orleans home wearing a watch bearing the inscription: "From the President of the United States to Robert Laird, master of the Honduran steamship, Atlantida, in recognition of his humane service in effecting the rescue at sea on October 18, 1924 of the master and crew of the American motorship, James Timpson."

John R. Kennedy, second officer and Lionel Buckley, wireless operator, were presented with binoculars, and medals will be

## PURCHASE PLAN ON CARS IS ANNOUNCED

New Time Payments Applicable on Chevrolets Now, Factory Declares

The new time payment purchase plan of the General Motors Acceptance Corporation when applied to the purchase of Chevrolet automobiles makes the time payment price of the car from \$15 to \$35 lower, according to C. E. Dawson, assistant general sales manager of the Chevrolet Motor company.

Mr. Dawson expresses enthusiastic approval of the plan.

"Today the automobile is a necessity; it has long passed the luxury stage," said Mr. Dawson. "Therefore like other necessities the automobile logically may be purchased out of current income and a majority of automobiles are so purchased.

"The G. M. A. C. plan enables the purchaser to buy his car out of income without the imposition of heavy premiums. A Chevrolet now may be bought on one-third down payment and operated during the year in which the payments are being completed at an additional cost of only eight cents per day for financing the time payments. This eight cents, besides meeting all interest and carrying charges, gives the purchaser complete fire and theft insurance coverage for the year.

"Heretofore, when dealers were financing their time payment sales through independent finance companies the interest and carrying charges varied greatly according to the resources of those companies and the volume of their business.

"The G. M. A. C. was organized as an aid to the General Motors dealers in order that they might give their patrons the benefit of lower interest and carrying charges. Because of its immense resources and the steady volume of business which it receives from the General Motors units, the G. M. A. C. enables dealers to reduce interest and carrying charges to the absolute minimum.

"The G. M. A. C. time payment plan is dove-tailing perfectly with the Six Per Cent Certificate plan by which prospective Chevrolet owners are paid 6 per cent interest on money deposited toward a first payment on a car. When this money and the interest reach the sum of a down payment, the car is delivered and the purchaser completes his payments under the inexpensive G. M. A. C. financing plan."

## Boston Theatre in Use as School for Actors

BOSTON.—The opening of the Repertory Theatre of Boston with Sheridan's "The Rivals" gives official recognition to a theatre as an educational institution, and thus is exempted from taxation.

Patterned somewhat along the lines of many civic theatres of Europe, the workers on this stage will strive not only for the perfection of their art but also to give earnest students of the drama a chance to absorb the real atmosphere of the theatre. Its educational efforts will be to present plays of artistic merit to the public, to interest high school students in the theatre, and to train and teach embryo actors and actresses.

Professional actors and actresses will play the characters while students look on at rehearsals and receive their instruction from these same professionals.

## Death Signs Stare at Reckless Auto Drivers

CHICAGO.—"One was killed, five hundred of these grim signs have been placed on Chicago streets in the campaign against further deaths of children from automobiles.

There were 545 deaths from automobiles in Cook county for 258 days this year or an average of more than two a day. Many of these tragedies involved children as thousands of Chicago's youngsters have no other place to play but in the street.

In 1923, the year before the signs were erected, 602 were killed in Chicago by motor cars. In 1924 there were 564 deaths. This year's total is expected to amount to much higher figures.

## SALE OF OVERLANDS STEADILY INCREASES

Nation Wide Sales Continue to Hold Up Deliveries to Distributors

Despite the fact that throughout the summer and early fall months production on the new Overland sixes has been greatly increased, orders from the Willys-Overland national dealer organization continue to pile up in advance of the production schedule.

Ever since the Overland six was first introduced to American motor car buyers it has been necessary to continually increase the production schedule on this model, until it quickly became one of the fastest selling models in the Willys-Overland line.

Production on the Overland sixes during the first nine months of 1925 totalled approximately 40,000 cars, and the Willys-Overland factory during the month of October entered into a production schedule of more than 200 cars per day of this model.

Dealers report a nation-wide approval of both the Overland six-cylinder sedan models. The "Six" standard sedan comes in a two tone gray with smart beading at the waistline, and is of the popular two-door type with long, narrow windows, and one-piece windshield, giving a maximum of vision and ventilation. The DeLuxe sedan is a two-tone finish, with gray above the belt line. This model has four doors. Both cars are powered by the newly design-

ed Overland six-cylinder engine developing 40 horsepower.

Serene Geneva Stirred at Arrival of Rich Maharajah

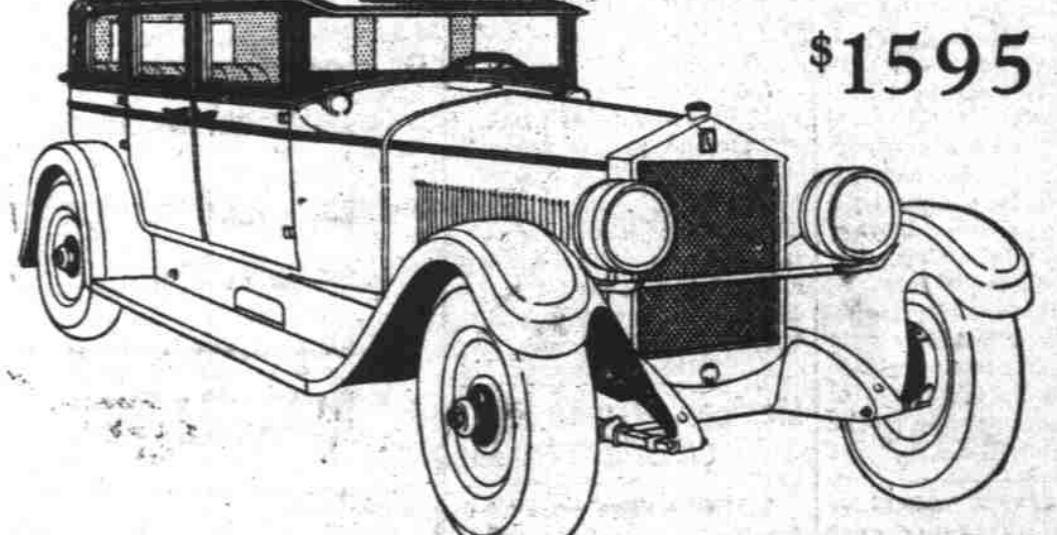
GENEVA.—So accustomed is Geneva to greatness within its borders that it rarely gets excited over an important new comer, but it awoke with sudden interest with the advent of the Maharajah of Patiala, who came as ppe of the Indian delegates to the League of Nations assembly. The Maharajah is credited with being the world's richest man.

In the ballrooms of the hotels where various delegations gave receptions with dancing, a feature, the Maharajah was the center of attraction. Despite his rather ponderous body he waltzed gracefully with some of the fairest of the ladies present. His bosom glittered with precious diamonds and in the lobes of his ears shone huge pearls encircled with diamonds.

The Maharajah came with a suite of 14 persons. He moved a source of material delight to Geneva shopkeepers. He is reported to have spent \$14,000 alone in the purchase of watches and binoculars, with an account on credit, for which he seems to have a passion as a collector. He developed into such a fantastic and interesting personality that eventually to escape the crowds he was forced to leave his hotel by the kitchen door to attain his automobile unmolesated.

But if the Maharajah was ever in the public eye his spouse, the Maharanee, and her two ladies in waiting, remained in oblivion. They went not to receptions, dinners or balls, ate their meals in the seclusion of their apartments and only emerged for drives in closed motor cars.

New! Smarter! Different!



America's Greatest 4-Door Sedan Buy

The achievement of a \$75,000,000 combination. The foremost specialist effort of the country has collaborated to produce America's Greatest Four-Door Sedan Buy.

New and smarter in its 1926 style-creating body on the famous Year Ahead Six Moon chassis. Different and better in looks, performance, in-built quality—and its price is the lowest in Moon history.

- Realize These Values
1. Value of a motor made entirely in one factory.
  2. Value of having every single unit modern—designed for today's traffic conditions.
  3. Value of 4-wheel hydraulic brakes for safety and tire economy.
  4. Value of the easiest steering gear you ever handled.
  5. Value of balloon tires on a car made for them.
  6. Value of Duco finish for beauty and durability.
  7. Value of permanent in-built goodness that insures high resale value.
- See this car today. Learn for yourself why it sets an entirely new mark for closed car value.
- |                    |        |                       |        |
|--------------------|--------|-----------------------|--------|
| Touring .....      | \$1295 | DeLuxe Brougham ..    | \$1695 |
| Roadster .....     | 1395   | Cabriolet Roadster .. | 1695   |
| Coach DeLuxe ..... | 1495   | DeLuxe Sedan .....    | 1785   |
- ALL PRICES F. O. B. ST. LOUIS

MOON

Salem Automobile Company

157 North High Street

## We handle a complete line of wet "A" and "B" RADIO BATTERIES

at surprisingly low prices

Philco Batteries are made to last for years. That is why we have so many satisfied users.

E. H. BURRELL

Battery and Electrical Service

236 North High Street—Phone 203