

THE MARKET FOR OUR PRUNES IS WIDENING, ASSERTS MR. NEWHOUSE

The Peak Load of Oregon Prune Production Is Near, and the Outlook for Stable Markets at Remunerative Prices on the Average is Bright—Smallest Crop on Record This Year

Editor Statesman:
During and immediately following the war, prices on prunes ruled unusually high. This resulted in heavy plantings, and the prune industry on the coast here has been confronted with placing larger than normal pre-war tonnage. This an high production combined with a period of depression since has caused returns to be short of satisfactory from the grower's standpoint.

Taking a general and long period view of the industry, conditions today are more than promising. While many new plantings are not yet in bearing and others have not yet reached their maximum production, we can now begin to see the peak load of Oregon prune production. No plantings of consequence have gone out the last three years, and mortality of old trees is very high. This is partly due to the heavy freeze of last winter and partly to indifference care given many orchards. As the market is constantly widening in an endeavor to absorb present large tonnages, we may reasonably expect in the not distant future a large outlet to be filled by decreasing tonnage. The well informed grower is taking care of his orchard to the best of his ability, waiting for this turn of the tide.

The above remarks apply only to movements that will affect the industry over a long period. A short crop of dried fruits elsewhere or a heavy crop all around will cause temporary severe fluctuations in price.

PRUNE SITUATION THE WORLD OVER

The Way It Looks to Robert C. Paulus, Leading Man in the Industry

(Robert C. Paulus, of Robert C. Paulus & Co., leading exporters and sales agents for prunes and in the Salem Fruit Union building, upon the solicitation of the Statesman, others fruits, with their offices editor yesterday, dictated the following:)

"The California prune market is weakening slightly at present. This will not, however, effect Oregon growers very much, on account of the fact that it is estimated that 85 to 90 percent of the prunes of the northwest are out of the hands of growers.

"Cable advises from Hamburg, Rotterdam, Paris and Havre, France, the last few days show a weakening in the market for Bosnia prunes.

"The weakening of the market in California is reported to be due to the fact that the association has sold independent packers large quantities of prunes which they are now using to fill their earlier orders. This leaves the outside growers without immediate market and the growers are weakening on their idea of values.

"Evaporated apple market in California has also weakened considerably.

"The crop of prunes in California is estimated variously from 220,000,000 pounds to 250,000,000 pounds, or generally a little under last year's. The carry over

Matters Being Adjusted

"High production costs and a limited export outlet are additional factors that have kept profits down, but these are gradually being corrected. The adoption of forced air type driers gives promise of lower drying costs and a better quality prune. Wages are slowly being placed on a parity with orchard income.

Europe is not only recovering from World War effects, but the consumption of dried fruits is increasing at a rapid rate. The small country of Finland, with a population of only 2,500,000 imports today over 5,000 tons of dried fruits. This country is typical of northern Europe generally. Much of this dried fruit comes from the Pacific coast here. Factors responsible for this increase are: reasonable all-water freight rates, better quality and a closer contact with buyers in these countries.

The 1925 Oregon, Washington prune crop, of approximately 15,000,000 pounds, is one of the lowest on record. The sizes are unusually large and the quality very good.

M. J. NEWHOUSE,
Manager North Pacific Cooperative Prune Exchange.
Portland, Ore., Oct. 5, 1925.
(The headquarters of the North Pacific Cooperative Prune Exchange is at 310 Worcester building, Portland. Its brands are the Mistland and Truewest prunes. It is the selling agency for local cooperative prune exchanges all over the prune sections of Oregon.—Ed.)

from the previous year has been cleaned up.

"The Oregon crop as now estimated will probably not exceed 20,000,000 pounds, including pebbles, which will run 2,000,000 to 2,500,000 pounds. Contrary to expectations, the crop is running practically straight 30's to 40's. Some packers are reported to have been buying back contracts on 40's to 50's from the eastern buyers on account of their inability to fill orders.

"Early sales on Oregon were made by packers at very good prices and prices offered growers were very attractive, with the result that the crop is now practically out of the growers hands.

"The Bosnia crop, which last year ran about 15,000,000, is now estimated to yield an exportable surplus of approximately 75,000,000 pounds. The sizes in Bosnia are running small to medium, while California crop is running mostly to medium.

"Oregon pebbles also are running 40's, 50's and 60's, contrary to general custom."

James J. Crossley

of Portland, Oregon
hereby announces that he is a candidate for the Republican nomination for U. S. Senator at the May, 1926, Primaries.

"Will work zealously for development of Oregon and support of measures for real benefit of farmers as suggested by their organizations."

"Favor World Court and Reform Senate Rules"
—Pd. Adv.

Sewing Week

Miller's Basement Store

Annual "Sewing Week" is emphasized this year with a large showing of fabrics in our basement store. We've added so many new lines to this department that a week devoted to special display and selling should interest every home dress maker in Salem. An opportunity to save money. COME TODAY!



1,000 Yards Gingham 19c Yard

32-inch good quality school Gingham in checks and plaids suitable for many uses—colors blue, pink, tan, rose, green, yellow, etc. (Basement)

1,500 Yards Sateen 32c Yard

36-inch good quality Sateen in 36 popular colors. For linings, shirtings, bloomers, fancy work, pillow tops, etc. Choose now from this large assortment of colors.

500 Yards Cretonne 29c Yard

Autumn Cretonnes are here—priced especially low. New designs, new colorings and a wide variety from which to choose. For fancy work, aprons, comforts, drapes and various other home uses.

All Silk Pongee 79c Yard

12 momie imported Pongee in regulation 33 inch widths is to be found here at 79c yard. This quality finds many home uses. Buy it now!

Silk Striped Lingerie Fabrics, 39c Yard

Extremely soft in texture these lingerie fabrics fashion into delightful underthings. Such colors as peachskin, sunshine, orchid, sky-blue, rose shell, pink, apricot and white. A pencil stripe of silk adds to their lustre.

Best Percales 23c Yard

Best Chambric Percales in 36 inch widths and in new Autumn patterns and colors. Examine this splendid quality and compare its price with other percales.



1000 Yards of OUTING FLANNEL 11c yard

Right now when you need outing flannel comes this sale of 1,000 yards of light and dark fancies at only 11c per yard. Yes it is a leader with us. It was a leader at a certain big mill that's why we can pass this unusual good buy on to you. To distribute it to many customers we've placed a limit of 10 yards. Come early for this one! (Basement)

Limit 10 Yards to Customer

PEASANT PRINTS (Rogers and Thompson Silks) Special 19c yard

Peasant Prints somewhat resemble Ratine in weave. These are printed similarly to Cretonne and are used for drapes, covers, art work, frocks, screen panels, etc. Very specially priced today at only 19c yard. (Basement)

Peggy Cloth 25c Yard
Peggy Cloth is excellent for sturdy school wear. We show a complete line of Peggy Cloth patterns in stripes and checks in all the wanted shades.

Glass Toweling 15c Yard
15-inch glass Toweling in red and blue checks and stripes. For tea towels, art work, table runners, drapes, etc.

Bath Mats 89c
Heavy Turkish Bath Mats specially priced at 89c. Outfit the bath room now with rugs and save money!

Black Twill for Gym Bloomers 28c Yard

Very firm quality of jean twill for gym bloomers, specially priced.

School Serges 23c Yard

30-inch Serge in navy, brown, red, grey, green, and tan. For school dresses it has no equal for service at this low price.

School Plaids 59c Yard

Small block check designs in these school serges make them popular for school wear. All the new wanted shades among them.

School Plaids 69c Yard

At this low price we show quite a range of patterns in school plaids, reds, tans, blues and novelty mixtures in most pleasing combinations.

School Plaids 98c Yard

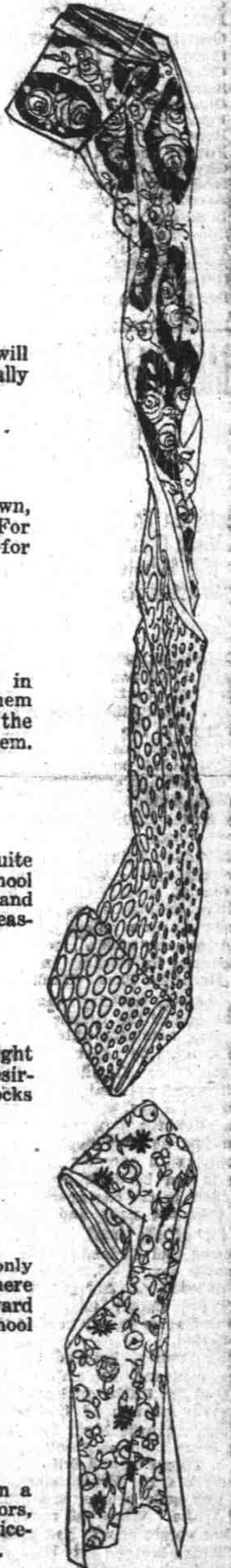
Part wool school plaids in bright plaids and stripes, very desirable for either one piece frocks or jumper dresses.

All Wool 54-inch Skirtings \$1.69 Yard

All wool 54-inch skirtings at only \$1.69 yard will be featured here during sewing week. One yard is sufficient for skirt for school Miss. All desirable shades.

All Wool Tweed Skirtings \$2.39 Yard

These are all wool tweeds in a variety of novelty mixed colors, plain and striped. Very serviceable for office or school wear.



Extra Special! 72x84 Indian Blankets go on sale today at \$2.48 each. These are the same quality we sold earlier in the season at this price, and as we did not have enough to meet the demand we ordered another mill shipment which we announce for today's sale. Navaho patterns in tan, nut brown, blue, rose, grey combinations; part wool. We reserve right to limit quantities. (Basement).

Another Shipment of Indian Blankets at \$2.48

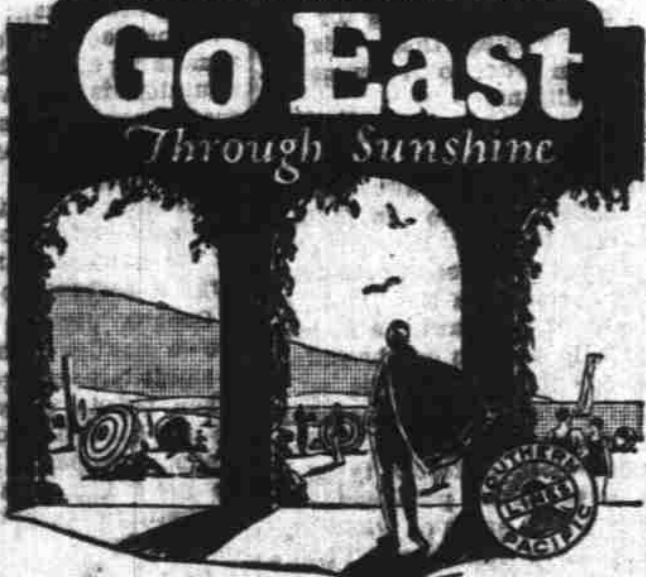
Fancy Bath Towels 49c

Jacquard Turkish Bath Towels, size 18x38, in rose, blue, tan and pink. A regular 75c value. (Basement)

MILLER'S Good Goods.

36-in. Cotton Challies 19c Yard

New patterns in 36-inch cotton Comfort Challies. Quite a variety from which to choose.



At so little added cost, include sunny California and the romantic scenes of the old South in your itinerary.

The Warm Winter Way

Shasta route to California—Four fine trains daily through service to Los Angeles via Southern California Express, thence

Sunset route—via El Paso, San Antonio, Houston, to New Orleans. Connects with Southern Pacific steamer to New York and with trains to east and north.

Get full particulars today—Phone Main 8800.

Southern Pacific Lines

O. L. Darling, Agent, Salem, or A. A. Mickel, D. F. & P. A., 184 Liberty St.

Salem's Leading Department Store