

IMPROVED FORDS ARE ATTRACTIVE

All Models on Display at State Fair; Tractors Are Also Exhibited

A feature of the state fair which will attract wide attention from the incoming farmers and their city cousins, as well as the exhibit of Ford cars and trucks and Ford tractors. Since fair time last year, Ford car bodies have been redesigned and numerous refinements have been made in the chassis, a new truck body idea for arm use has been developed and improvements have been made in the Fordson tractor.

The Fordson tractor's undriving power and adaptability to dozens of essential farm operations make it a local point for progressive farmers. Right on the fair grounds, the Fordson will be seen exhibiting its ability to furnish power for plowing, harrowing, cultivating, harvesting and other tillage operations, demonstrations of the tractor's operation of silo filling machinery, threshers, balers, hoes, and feed grinders will be carried on.

The improved Ford cars, while retaining all the features of economy, dependability and performance which have made the Model chassis famous the world over, have been redesigned and offer a new attractive appearance and greater comfort; for both driver and passenger.

For those who favor the open type of car, there are the Ford touring car and roadster, both distinctive in their class. The touring car has been made lower and longer in body and of increased carrying capacity. The seats are considerably wider and between the rear panel of the front seat and front panel of the rear seat, there is ample room for a bushel basket, and greater comfort for back seat passengers through added leg room.

A. Lawler Resigns as Chief U. S. Game Warden

George A. Lawler, who for nearly ten years has been chief warden in the administration of Federal laws protecting migratory birds, has tendered his resignation, effective September 15, 1925, and it has been accepted by the secretary of agriculture. Mr. Lawler gave as his reason for the action that he wished to gratify a long-expressed wish to leave the government service in order to look after private business affairs. He referred to a previous occasion on which he had tendered his resignation for like reason, when he had been reminded to remain in the service. It now stressed his feeling that after nearly ten years in the work he had devoted as much time to as should be expected of him, acknowledging the tender of resignation. Dr. E. W. Nelson, director of the Biological Survey, expressed his appreciation of the able services Mr. Lawler had rendered, particularly in helping amend federal regulations for the protection of game and other migratory birds and other forms of wild life in the United States and Alaska, and in assisting state and conservation officials,

ACTIVITIES AT THE INDIAN SCHOOL

The Shops Are Overcrowded; Will Have a Great State Fair Display

(Following are paragraphs clipped from the current number of the Chemawa American, the paper published at the United States Indian training school, at Chemawa:)

Forms are being placed for the senior domestic science addition. The auto mechanics division have entered into their work with a great deal of zest and when the base for the motor is finished they will take it down and reassemble it and make it run.

Our shops this year are crowded as never before. More boys are clamoring to get in, and though added space has improved our capacity, there are more applicants than we can conveniently accommodate. Students will do well to keep this fact in mind and make every effort to get all possible from the trades instruction.

The tenth grade girls are studying a new phase of cooking this year, dietetics. It deals with balanced menus and the food requirements of different types of people. We are also planning and serving meals in preparation for our demonstration dinners.

Next Monday, Sept. 28, the Oregon state fair will open in Salem, so it goes without saying that this will be a busy week at Chemawa in preparing the school exhibit, as we always have a large and exceptionally fine and varied display at the fair. Each year in the past it has seemed that Chemawa has improved on her display of the previous year at the fair and we have now reached a point where further improvement appears impossible, but we will not pass judgment until Sept. 28, and his assistants have had their chance this year.

Flora Dexter, who spent the summer vacation with her parents at her home in Golovin, Alaska, arrived back at school last Saturday, sound and well, and happy to be with us again. She is a prominent member of our junior class.

On Tuesday evening the domestic science department gave what was in reality a health demonstration dinner. It was a six-course dinner and was served by the members of the tenth grade. Covers were laid for Miss Thompson, head of nursing; and Miss Freary, her assistant; Miss Simpson, physical director—all three representing the Red Cross of Salem; Miss Groves, supervisor of household economics in the Indian service; Dr. Rowland, Mrs. Hill, Mrs. Parks and Mrs. Brickell. It was in every way a pleasing educational dinner. On Thursday these people were at the school again and met with the teachers, matrons and disciplinarians and arranged for work to be done in connection with our regular health program. Miss Feary will teach the regular Red Cross course in home nursing to the eighth grade class.

Reno Booth returned to Chemawa Thursday. Reno spent the summer at Metlakatla, Alaska. We are very glad to have our pianist, Harriett Hill, back with us. Harriett spent her vacation with her parents at Klamath, Oregon. (This is a junior class note.) Josephine Alberts has chosen Chemawa to complete her junior and senior years of high school work. Josephine is a graduate of Plandreau and comes from her home in Grace City, North Dakota. The girls of the junior class welcome to their number, Evelyn Lyall, who is an accomplished violinist. Evelyn is from Toppensish, Washington, and before coming to Chemawa attended school at Toppensish.

The talk given in the auditorium by Anna Peratrovich on Sunday morning was very much enjoyed by all present. Anna was a

delegate to the Religious Workers' convention held at Geneva, Colorado. She told of the convention and her experiences on the trip.

German Scientists Obtain Data on Deep-Sea Current

HAMBURG — A scientific deep-sea expedition which left Hamburg in April recently arrived at Cape Town after a successful cruise. The expedition traversed the Atlantic between America and Africa 14 times and succeeded in studying scientifically submarine currents. The claim is made that this is the first time this has been accomplished. Reports from the expedition declared that its investigation proved that warm currents from the North Atlantic flow at considerable depth for a distance of about 2,000 miles south of the equator where they rise to the surface. Similar currents from the southern Polar regions pass northward.

Did You Ever Stop To Think?

That tremendous savings are made by thrifty buyers who read the ads and shop where the best buys are to be found.

That the advertisements show the unrivaled ability of the stores that advertise to give their customers desirable and worthy merchandise at prices that satisfy.

That when you buy from the stores that are persistent advertisers you take no chance.

That the people who do not read the advertisements do not know what is going on; they do not realize what a mistake they are making.

That they live their lives, but overlook the fact that they could live a whole lot better if they read the ads. Reading the ads would show them where they could buy more for less.

That real economy in purchasing merchandise is not the original price paid, but the good buy is where a fair price is paid for a good article which will give good service.

That merchants who advertise persistently must sell goods to the same people month after month. Their merchandise must be good and their advertising truthful or their reputation for square dealing, likewise their business would go to the "bow-wows."

THE SUREST WAY TO GET

Amundsen at Spitzbergen Got America's Welcome

NY-AALESUND, Kingsbay, Spitzbergen — Nowhere else could a party of explorers, polar or otherwise, find a heartier welcome than at this "half way house to the pole," where Director Knudsen of the Kingsbay Coal company holds sway.

Intensely patriotic and a warm admirer of Amundsen personally, Knudsen's feelings got the better of him when the explorers landed here from the sealer Sjolliv, and he

pressed them all to his breast in turn, shedding tears of joy. Director Knudsen is the Grand Old Man of Spitzbergen, and he is as hard as nails. Back in the "seventies" his home was in Seattle, Wash., and later he joined the gold rush to Klondike, where his iron constitution saw him through all kinds of adventures and privations.

Knudsen, who has not lost his American accent, took an almost fatherly interest in Lincoln Ellsworth, the only American member of the Amundsen expedition, whom he solemnly initiated into the rite of blood-brotherhood, which ends with the drinking of a glass of wine with linked arms. Not lightly will a Norwegian confer this privilege upon a stranger.

Rate Association Is Not in Favor of New Hearing

SPOKANE, Sept. 28.—(By The Associated Press)—Local members of the International rate association, an organization of intermountain shippers seeking perpetuation of the long and short haul clause of the interstate commerce act, protested today the holding of a hearing on the Hock-Smith resolution in Seattle.

A conference held at noon telegraphed J. J. Denny, state director of public works, who suggested the Seattle hearing, that if any were held in the Pacific northwest, it should be held in Spokane. The intermountain country has been assigned no hearing, it was pointed out.

Southern Pacific Lines
this dependable service to **PORTLAND**

Go by train—comfortable, on-time service every day.

Lv. Salem	At. Portland
6:41 a.m. . . No. 16 . . .	8:50 a.m.
Delicious breakfast in Southern Pacific dining car.	
9:33 a.m. . . No. 18 . . .	11:30 a.m.
1:25 p.m. . . No. 14 . . .	3:30 p.m.
5:35 p.m. . . No. 34 . . .	7:40 p.m.

Similar convenient service returning.
Ask agent

Southern Pacific Lines
O. L. Darling, Agent, Salem, or A. A. Mickel, D. F. & P. A., 184 Liberty St.

Looks Different; Don't It? Well, It Is Different

and the principle underlying the difference is the basis for its well merited popularity.



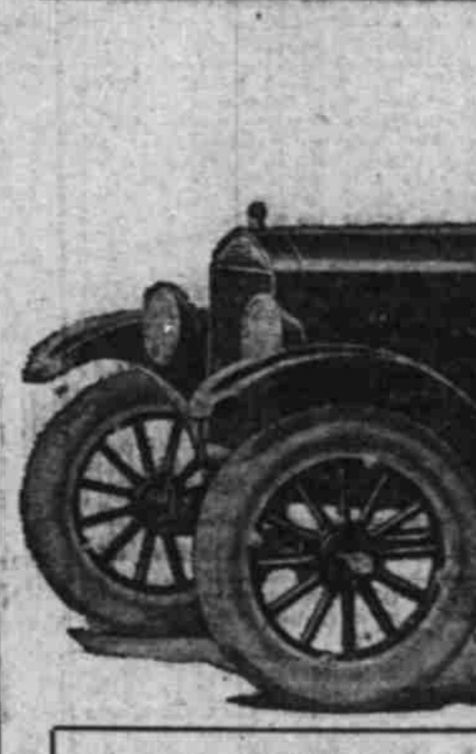
Eastman
"SIBLOCO" FURNACES
See our exhibit at the State Fair
New Industrial Bldg.

Let our Mr. Quesseth explain the "DIFFERENCE" and why thousands of Home Owners have found that the "EASTMAN" Principal of Heating means **MORE HEAT FOR LESS MONEY**
Eastman Brothers Silverton, Oregon

The Improved Ford Touring



Improved Ford Runabout Suggests Sport Model



The Improved Ford Coupe



The streamline body of the improved Ford Runabout which includes, in one sweep, the radiator, hood, cowl, tonneau and gracefully sloping rear deck, gives this type the racy lines of a sport model.

The entire effect of the Runabout is low, an effect which is accentuated by the low windshield, the bottom half of which conforms to the shape of the cowl, and the low set top. Fenders are wide and hung close to the wheels and together with the lowered suspension of the frame gives the model a suggestion of speed and roadability.

Riding comfort is insured by especially designed low seat and back rest. A door is provided at the driver's left, permitting easy entry or exit. The gasoline tank, which is under the cowl may be filled without disturbing either driver or passenger. Storm curtains open with the doors and are held firmly in place by rigid uprights.

The trim appearance of the improved Ford Coupe distinguishes it as one of the most attractive cars in the Ford line. The body which is in deep channel green, is built along the most advanced principles in design, with a long sweep from the radiator to the windshield and with a rear deck of generous proportions and graceful curves downward, enhanced through the lowering of the chassis frame and the large crown fenders which come low over the front and rear wheels. The wide door makes access and exit easy and deep, restful cushions of new design add to riding comfort. One-piece windshield and narrow roof pillar afford full visibility for the driver. As with other improved types the gasoline tank is under the cowl and is filled from outside, so that neither driver or passenger is disturbed.

All Models on Display at the State Fair
VALLEY MOTOR COMPANY
Salem, Oregon

W. W. Kimball Piano
With **Wette Mignon Reproducer**
CONCERT EVERY HOUR
FAIR BOOTH
(New Pavilion)
Moore's Music House
409-415 COURT, PHONE 983
"Moore Means Music"