

SEVENTY-FIFTH YEAR

SALEM, OREGON, SUNDAY MORNING, SEPTEMBER 27, 1925

## DISPLAY OF AUTOS AROUSSES INTEREST

Automotive Section of State Fair Is Larger and Better Than Ever Before

From all indications the automotive display at the Oregon state fair will be larger and better than ever before. With the increased demand for automobiles and the new and improved models coming out constantly a splendid array of motor vehicles can be shown. All available space in the automobile department has been engaged for some time and some have taken space outside in tents.

Following are the concerns who have space and the cars they will display. Ford Motor company, all models of the improved Ford and Fordson tractor, Fred M. Powell Motor Cars, Packard, Hudson-Essex, Marlon Automobile company, Franklin and Studebaker, MacDonald Automobile company, Locomobile, Marmon, Cleveland Chandler, F. W. Petty-John company Oldsmobile, Rick-enbacker, Trumm Motor company Paige and Jewett, Otto J. Wilson, Buick, Bonesteel Motor company Dodge, Graham trucks, Salem Automobile company, Moon and Diana, Newton Chevrolet company, Chevrolet, Vick Brothers, Overland, Willys-Knight Oakland, Kirkwood Motor company Nash, Huppmobile, Burdette - Albee, Gardner, Glogrich Motor company, Chrysler, Wentworth Irwin company, G. M. C. trucks, Dan Burns, automobile parts.

Harry Scott, local cycle man will have a display of the Harley-Davidsons including the new one cylinder model just out. The first of these models to arrive in Oregon will be on display. This motorcycle was ridden from the factory by Joe Schanlin east Portland dealer. In many of the above mentioned displays, Portland dealers are assisting the local dealers.

## USED CAR SALE OPENED

BURDETT - ALBEE COMPANY.  
ANNOUNCE START OF SALE

The Gardner agency at 217 State street operated by the Burdett-Albee Motor company decided a few weeks ago that fair week after the harvest were over and both city and country folk have time to look around a bit would be a good time to dispose of their stock of used cars and they have been putting forth a burst of effort toward getting all of their used cars in good shape for a big clearance sale during fair week. O. H. Zeller of the local agency calls attention to the fact that the used cars stocks in Salem are at the lowest point they have been in years and that practically all reputable dealers have been trading carefully as a result the buyer is getting top value for his money in good used cars. "It is a question in my mind," said Zeller yesterday, "whether there isn't a far bigger dollars worth of value to be obtained in used cars at the present time than in new and I think an inspection of the cars we are placing on sale this week will bear out my statement."

The movie rights for one of Mark Twain's least important stories recently sold for \$25,000 for a six-year agreement.

## BICYCLES

On Easy Terms

**\$5 Down**

and

**\$1.50 a Week**

Buys a New Bicycle

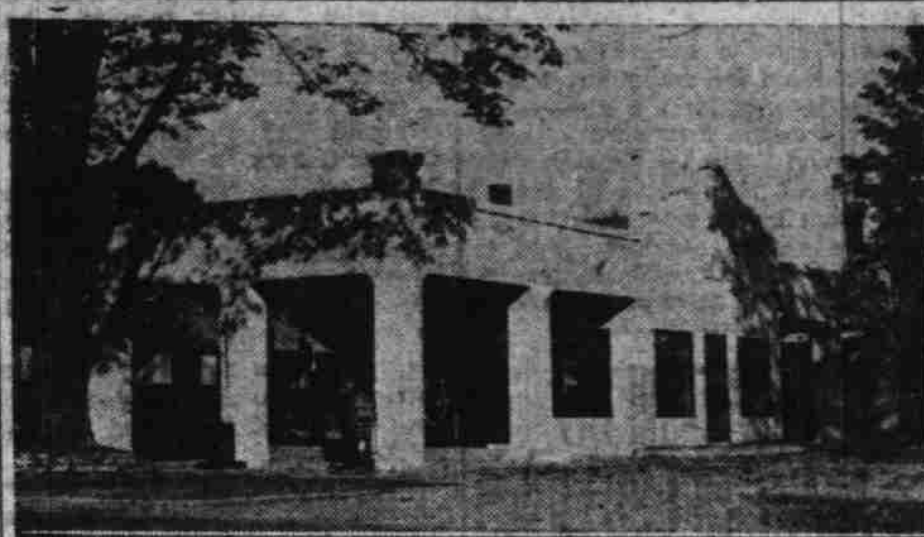
If you already have one  
Have it Repaired Now  
so it will be ready when  
you want it

**Lloyd E. Ramsden**

387 Court Street

SALEM OREGON

Repairing—Accessories  
Children's Wheel Goods



## NEW SALEM FILLING STATION UNDER SHADOW OF CAPITOL

Articles of incorporation have been filed by L. D. Jones, W. R. Kirkpatrick and H. S. Cheek, who have opened the new service station at the intersection of Court and Capitol streets. The new station is one of the most attractive in the city and is in the heart of the old exclusive residential section, and under the shadow of the state capitol.

Four pumps have been installed and General and Standard gasoline will be sold. Valvoline and Penn State oil will be dispensed. Automatic pneumatic high pressure lubrication service will be offered.

## LOOK OUT FOR THE CHILDREN—WARNING

Motorists Urged to Drive  
Careful When Near Schools  
or Playgrounds

Schools have reopened and as a result our highways, streets and byways are filled morning, noon and night with children going to and from schools all over the state. These youngsters are the coming generation of our nation. It is an obligation upon every motorist to exercise the utmost care and diligence in driving, to look out for these children as they are on their way to and from school. Extreme care should also be exercised in the vicinity of every school as the children will be playing near the schools during certain intervals of the day, as well as crossing the streets in going to and from the schools. These conditions will create a congested condition near the schools that makes it incumbent upon each motorist to exercise the utmost care and diligence during the school session. After a time, motorists become accustomed to these conditions, but after a period of three months of vacation, with the school yards practically deserted, it is of importance for the motorists to realize fully the re-congested conditions and to govern themselves and their operations accordingly.

Appreciating these conditions, the Oregon State Motor association is broadcasting throughout the state this information that a thorough realization and appreciation of the dangers existing under the congested conditions resulting from the re-opening of schools. The press carries stories frequently of serious and fatal accidents to children resulting from their running in front of traffic. Today it is some one's else child; tomorrow this condition may be brought home closer to you by the careless operation of a vehicle resulting in your child being injured or maimed.

Don't park your automobile where there are signs prohibiting parking. These signs are plainly painted a deep yellow color and should be heeded. Don't turn your automobile in the middle of the block unless you can do so without holding up traffic. Take care not to stall the motor. Don't fail to give the proper signal in plenty of time before you intend to make a turn or stop. Don't fail to stop, look and listen whenever you hear a siren. Sirens are used only on the fire trucks, police cars, ambulances, traffic officers and others engaged on police business. These have the right of way at all times as their business is always urgent. Failure to give right of way may result in a serious accident or delay persons whose presence is essential as soon as possible. Don't fail to comply with these laws. We expect them to be observed.

## AUTO TOP SHOP MOVED

O. J. HULL COMPANY TO OCCUPY BINGHAM BUILDING

The O. J. Hull Auto Top and Paint company are moving their auto top, radiator and fender department from its present location back of the city hall to the Bingham building, which was recently purchased by D. A. White, just south of the Marion garage. The Duo paint department will remain at the present location. O. J. Hull proprietor of the company, states that he believes his new location will be ideal for his business. The radiator and fender department will be in charge of E. W. Moody, a man of considerable experience in his line. Mr. Hull also announces that he now has the exclusive agency for the Hampden winter enclosure for the valley and will have enclosures made up for 26 different stock models of automobiles.

## PRESIDENT TO SEE GAME

WASHINGTON, Sept. 25.—(By A. P.)—President Coolidge plans to attend the opening game here of the world's series between Washington and Pittsburgh. After two games in Pittsburgh the teams will appear here on Friday, October 9.

## DONT'S ARE LISTED FOR LOCAL DRIVERS

Chief of Police Minto Urges  
Motorists to Heed and  
Obey Regulations

Seven "don't's" that motorists should bear in mind are given by Chief of Police Frank A. Minto. Some of these apply to general traffic conditions while others are strictly local warnings.

Don't fail to park between the white lines. They were placed for a specific purpose and for the guidance of motorists.

Don't pass streetcars taking on or discharging passengers unless you receive a signal from the man in charge to proceed. Better sound your horn for precaution and warning to the person who may be coming from behind the streetcar.

Don't park your automobile where there are signs prohibiting parking. These signs are plainly painted a deep yellow color and should be heeded.

Don't turn your automobile in the middle of the block unless you can do so without holding up traffic. Take care not to stall the motor.

Don't fail to give the proper signal in plenty of time before you intend to make a turn or stop.

Don't fail to stop, look and listen whenever you hear a siren. Sirens are used only on the fire trucks, police cars, ambulances, traffic officers and others engaged on police business. These have the right of way at all times as their business is always urgent. Failure to give right of way may result in a serious accident or delay persons whose presence is essential as soon as possible. Don't fail to comply with these laws. We expect them to be observed.

## FORD IS MUCH CHANGED

STREAMLINE EFFECT IS SEEN  
ON IMPROVED MODELS

The pronounced streamline of the improved Ford touring car is particularly accentuated in the higher radiator, the long sweep of the hood and cowl and the large crown fenders which come down well over both front and rear wheels. The body is longer, wider and sets 4 1/2 inches lower. Seats have been re-designed and are lower. There is greater leg room in the car. All four doors open forward and storm curtains are provided with uprights and open with the doors. The gasoline tank is under the cowl, permitting outside filling and easy access to the sediment bulb. Chassis changes include larger and more powerful brakes and other important mechanical improvements.

## OVERLAND DEALERS REPORT BIG SALES

Price Cut Causes Distributors to Be Flooded With Orders for Cars

Reports from Willys-Overland, Inc., at Toledo, following the sensational price announcement on the standard Overland sedan made two weeks ago indicate that all sales records for the company will be shattered during the next month.

Of particular interest to the Pacific coast is the huge volume of orders which is rolling up as a result of the announcement made here.

Reserve stocks of the standard sedan were exhausted the first week and emergency shipments are now on the way from the factory to prepare against any acute shortage in deliveries. The new shipments include not only the standard sedan model but cars of all the various Overland and Willys-Knight models which have felt an upward swing as interest has been developed through the special drive on the light enclosed car.

Reflection of the general public mind toward Overland and the price reduction announcements which have been made in the past months are indicated by the strong position of the securities of the company's common stock soared to the highest point reached this year, immediately following the new move made by the sales department.

Rumors purporting to indicate a reduction in the manufacturing schedule of the light Overland model were discounted by the plans of the organization in Toledo to double the production on the sedan model alone.

## SEATTLE MAN SUICIDES

SEATTLE, Sept. 25.—(By Associated Press).—William Schilpin, local cafe proprietor, despondent over ill health, shot himself to death in his room at his home here today, police reported tonight. He is survived by his widow, a young daughter and his mother, all of Seattle.

## SEE THE OREGON CAVES!

Wonderful Caverns in a Mountain of Marble  
49 Miles From Grants Pass  
Via the Redwood Highway

## CLEVELAND PRICES ARE AGAIN SLASHED

Announcement of New Cut Is Made Following Meeting of Dealers

One of the most surprising announcements made by motor car companies who have introduced new car models and reduced its various prices is that of the Cleveland Six. At its recent dealers' convention which closed last week in Cleveland, Ohio, this company brought forth enthusiastic approval on the part of its entire dealer organization by announcing four entirely new models to its present 1926 series, and materially reducing the prices of its various models.

Price reductions effective with this company extend upward as high as \$300, the heaviest cuts applying on the new Cleveland Six four door sedan and the Special four door sedan.

A coupe model, an entirely new creation, is also reduced. Included in this same series is a beautiful touring de luxe model, which features a sportive touch throughout.

The new low priced Cleveland Six sedan is in a beige brown. A beautiful gray forms the interior color scheme. It also includes a one-piece windshield.

In the Special Six series the four door sedan carries Cleveland blue color as its body finish while the interior is in a rich shade of gray broadcloth. This creation is characterized by a raised bead in contrasting color running completely around the car. A one-piece, waterproof VV type windshield is shown with this model. Five passengers can be easily seated in its spacious interior. Pockets are provided in both rear doors and the hardware is in mat silver finish.

At the new low prices announced on these models, these

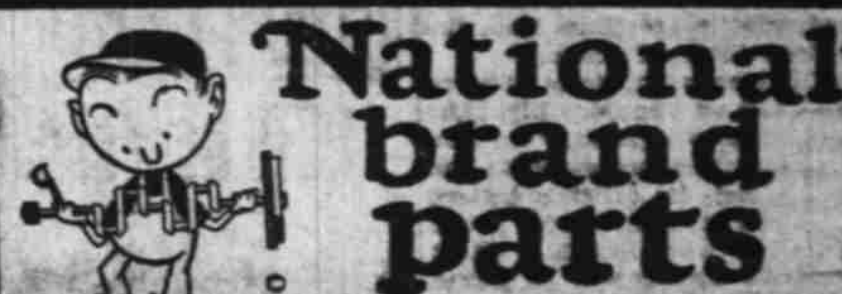
sedans can be numbered among the lowest priced six cylinder four door sedans on the American market.

Both coupe models in the Cleveland Six series are finished in a striking shade of Cleveland blue with a bead in different color running from the hood to the rear of the car. Doors are unusually wide to allow easy entrance and exit. A notable feature with these coupe models is the spacious rear deck compartments which provide ample carrying space for luggage and other cumbersome articles of travel. Directly back of the

driver's seat, another storage space is available for small incidentals. Genuine leather constitutes the upholstery material of the coupes but gray corduroy is optional at no additional cost. There is ample room for three passengers in either of these coupes.

## CEMENT FLOOR IN

A new cement floor has been completed in the service room of the G. W. Day tire and accessory shop.



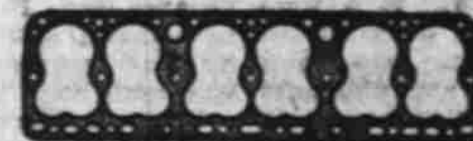
accurateMike

## New Gaskets

When your motor is repaired  
means Security—

We have a large investment in

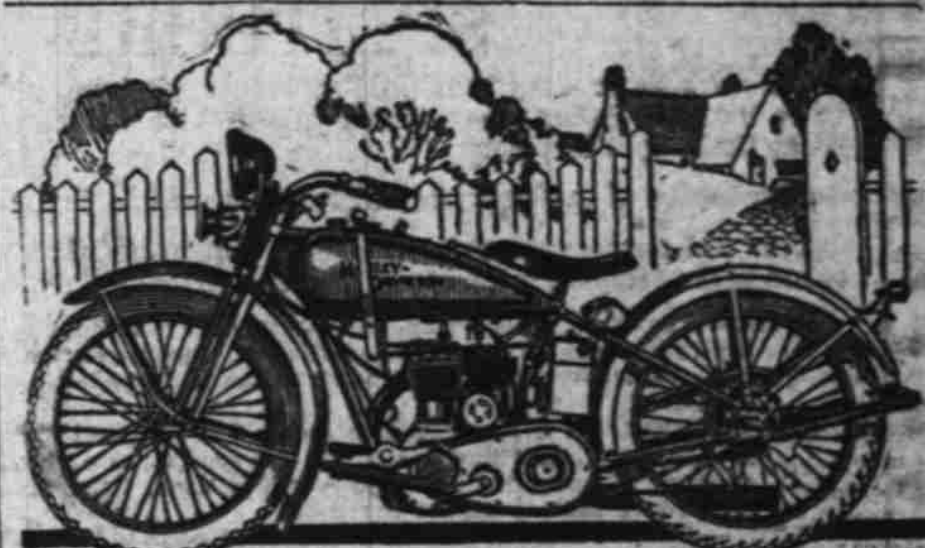
**VICTOR  
GASKETS**



They help us give you  
**Satisfactory Service**

"JIM" "BILL"  
**SMITH & WATKINS**  
Court at High Street Phone 44

**Doubly Guaranteed**



## The New Single Harley-Davidson

HERE is the ideal personal mount for you—A new-type motorcycle—easy to ride, low in price, cheap in upkeep. No trick to ride it. Even a beginner learns within a city block. Easy to control and handle.

Economy! 75 miles to the gallon of gasoline—800 to the gallon of oil—10,000 to 12,000 miles on two inexpensive tires. No parking problems—ride right up where you want to go. Park it anywhere.

Ride to work and back faster than a cat. No long waits for crowded buses and street cars. The saving in fares covers the operating cost, and then some.

Even the low price can be paid as you ride. Call and look over this New Single today.



Come in and See it!  
**The New HARLEY-DAVIDSON Single**

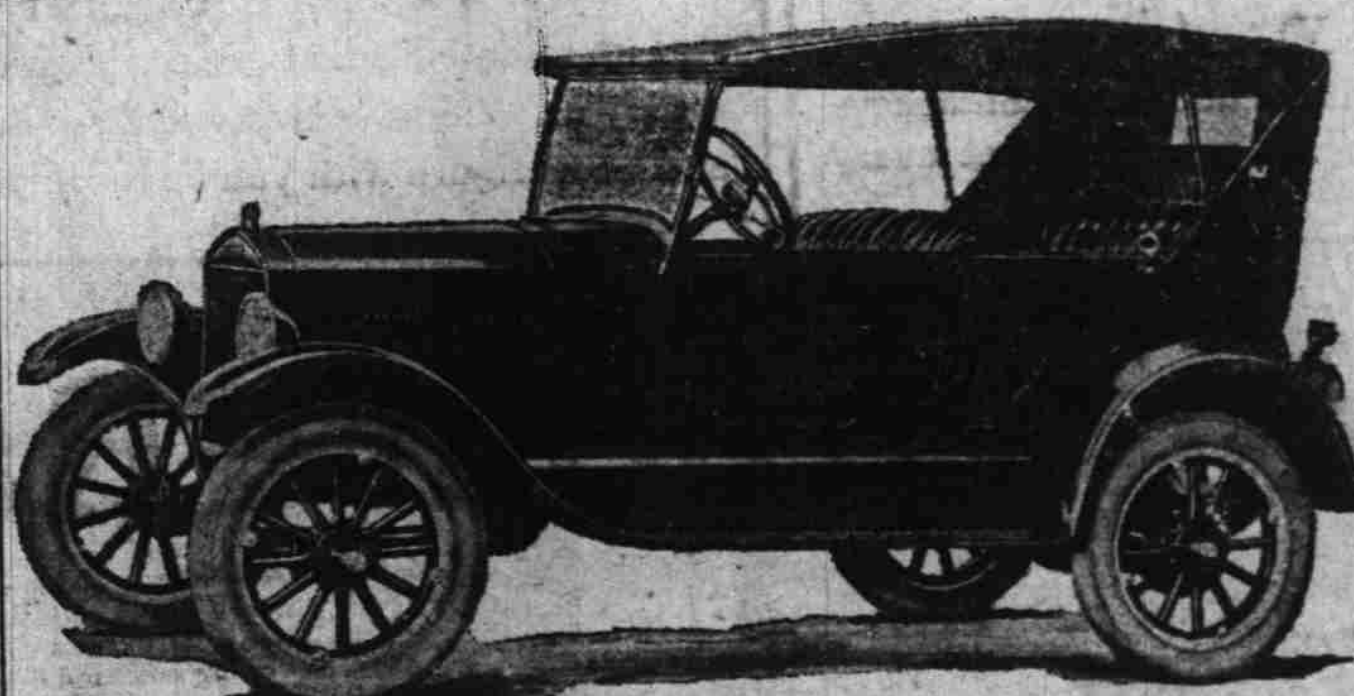
**Harry W. Scott**

"The Cycle Man"

147 So. Commercial St. Phone 68  
**SEE US AT THE STATE FAIR**

## THE IMPROVED

**Ford**



All Models on Display at the  
State Fair

**VALLEY MOTOR  
COMPANY**

Salem, Oregon

## Starters

need adjusting and repairing so they  
will give the best satisfaction.

## Generators

need cleaning and adjusting so it will  
keep your battery charged.

## Magnetoes

need attention in cold, rainy weather.  
A little adjusting makes your car start  
easier.

## Adjusted

to get the best results the work should  
be done by experts.

## Here

you will find long experienced men  
who will do your work satisfactorily.

If you can't come yourself—send in your Magneto

**E. H. BURRELL**

Battery and Electrical Service

236 North High Street

Phone 203