

THE BEST PEOPLE
 Scene: A gasoline station in a small town on the Overland Trail. Dramatic personae. Small boy in back seat of sedan and resi-

dent minister of the gospel. Minister: "And to whom do you belong, my little man?" Young American (proudly): "Daddy is a lawyer and a Rotarian, and mother is president of the Law Enforcement League." Minister: "And what do you do?" Young American: "Oh, I look out of this back window for the motor cop."—Stanford Chaparral.

FORMER RULER AND PILGRIMS VICTIMS

Ex-king of Portugal and Subjects Declared Victims of Intrigue

LISBON—Former King Manuel of Portugal recently was made the central figure of a supposed political intrigue, of which he apparently was innocent. The occasion was the pilgrimage of nearly 2,000 Portuguese Roman Catholics, including many prelates, to Rome for the Holy Year celebration.

Before the arrival of the pilgrims in Rome news reached Lisbon that the ex-king was in the Eternal City and some one in Lisbon warned the Italian government that the Portuguese pilgrims had gone to Rome with the intention of carrying out some political maneuvers with the ex-king at their head. This resulted in an exchange of several telegrams between the Italian and Portuguese governments.

The unsuspecting pilgrims were met at Rome with warnings from the police that upon the slightest manifestation of a political nature they would be regarded as "undesirables" and treated as such. Protests addressed to Premier Mussolini were met with the reply: "But all this is due to communications from your government."

The ex-king was in Rome at the time under the name Count de Ourem. It was explained that long before the incident he had been invited by the Vatican to come to Rome for the canonization of Saint Teresa. However, in view of the turn events had taken the Portuguese pilgrims were advised not to attempt to call upon the ex-king.

The Portuguese government apparently became satisfied that danger of a monarchist plot had disappeared and sent an official note to the press, said to have been based on statements received from the Vatican that "Dom Manuel de Braganza was received without any official honors and

that the visits exchanged between him and members of the Vatican were merely acts of courtesy."

MANY BODY REFINEMENTS

The body design which has been so characteristically Chrysler is unchanged save for minor details. The smartness of the roadster type, which Chrysler has done much to restore to popularity, has been enhanced in many details. New bullet-type head lamps, a top bow is finished in walnut to match the steering wheel and instrument board panel, fitting into a nickel-plated thimble, automatic windshield wiper, wider doors permitting greater ease in getting behind the steering wheel, side hinges on the golf compartment door, and top of uncoated and rubberized material, are a few of the new features.

Not only can the top be folded back neatly but by unbuttoning four curtain fasteners and loosening a few bolts the top can be taken off.

Americans Will Erect New Catholic School in China

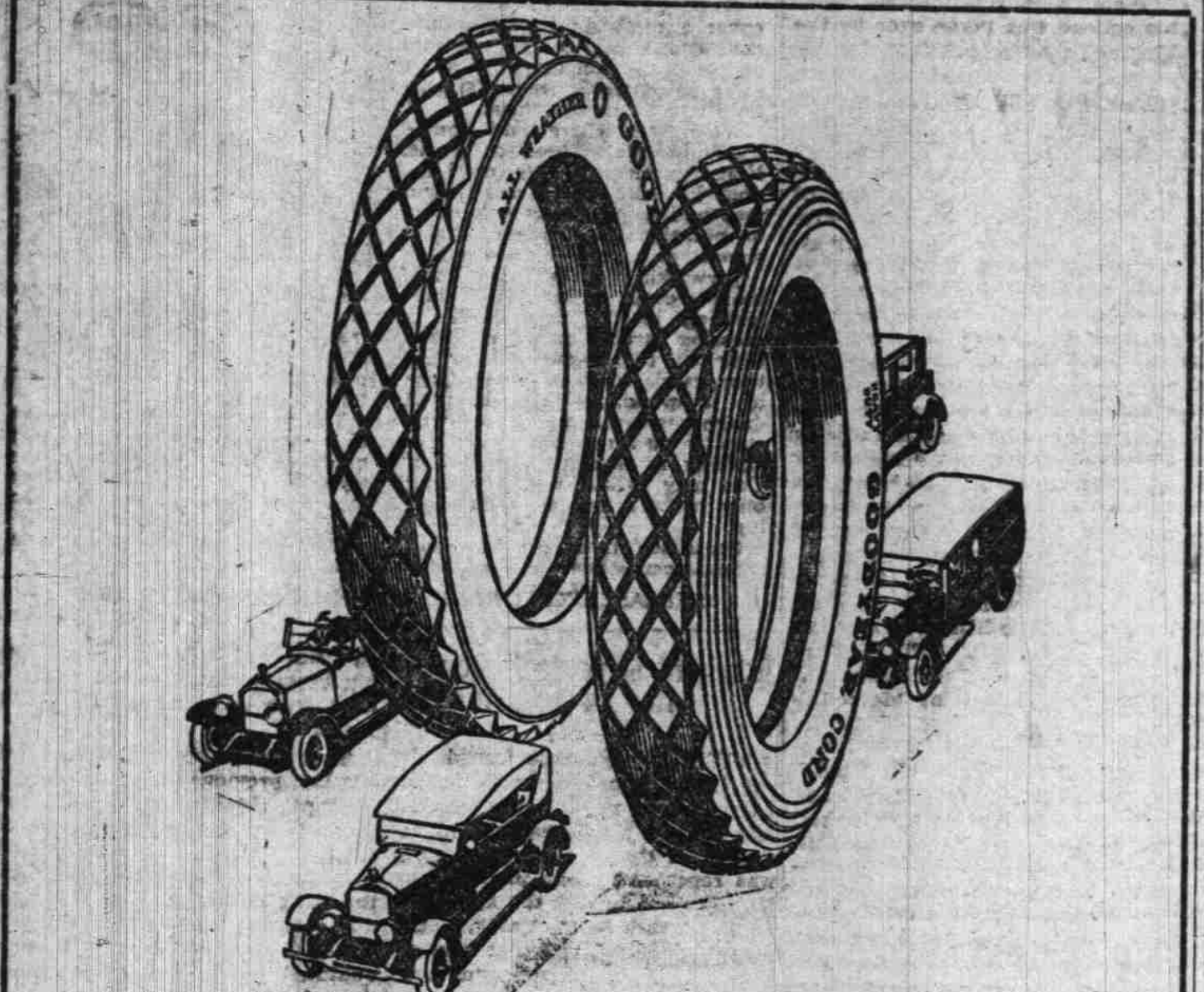
BEATTY, Pa.—Survey of conditions preparatory to the establishment of a Catholic educational institution in China under the supervision of St. Vincent Arch-bishop here has been completed by the Rt. Rev. Aurelius Stehle, Order of St. Benedictine, who recently returned from Peking. He spent several months in China, at the direction of Pope Plus XI, making the survey.

The project was started seven years ago when Vincent Ying, a Chinese educator, appealed to Pope Benedict XV for assistance in establishing a university in Peking but nothing definite resulted. With the election of Pope Plus XI the matter was again considered and it was referred to the entire American-Cassinese congregation believing the undertaking would be too large to be handled by any single abbey.

The question was considered at the twenty-first general chapter of the American-Cassinese congregation, at the Abbey of Saint Procopius, Lisle, Ill., in August, 1923. A favorable vote was returned and the project was entrusted to St. Vincent's Arch-bishop.

The tentative curriculum would

include theology and philosophy; letters, Chinese and European; natural science; social science and history, and mining and engineering. A preparatory school may be included in the plans and other additions made to meet local educational needs. The site for the institution has been obtained and it is expected that construction work will be undertaken within short time.



Heavy Duty

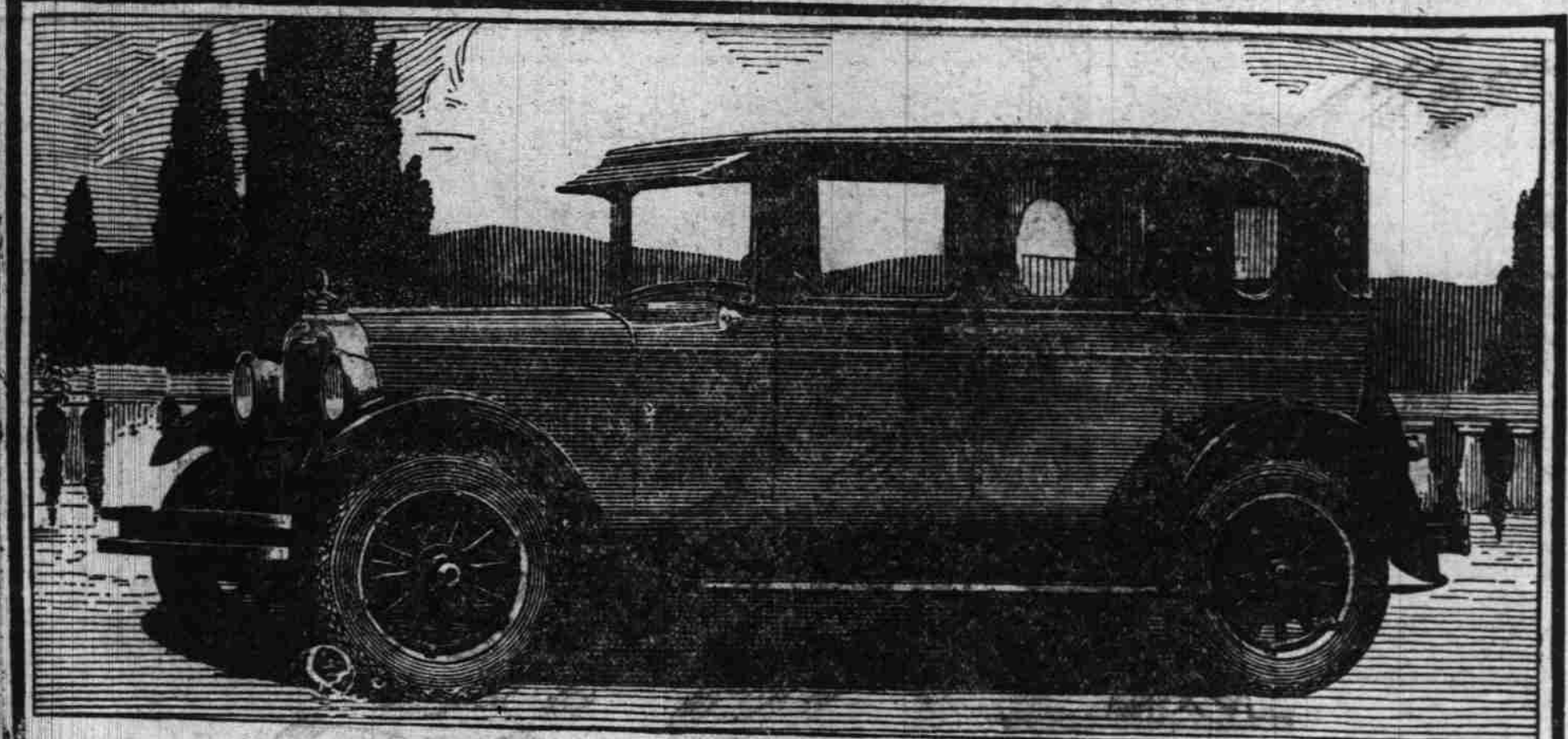
And We Don't Mean Maybe

We told the Goodyear people there was a big need here for a heavy duty passenger car tire—one that could stand the sorest grief and the hardest driving, and take no "sass" from any road.

They gave us the Goodyear Heavy Duty Cord

Is it tough, powerful, strong? We'll tell the world. More plies of Goodyear supertwist, more Goodyear rubber, reinforced sidewall, ribs, famous all-weather tread. Yes sir; here it is for you.

DAY & ZOSEL
 294 North Commercial—Telephone 66
 EXPERT VULCANIZING AND TIRE REPAIRING



New Prices \$70 to \$350 Lower

To add to quality is one thing. To effect lower prices is another. But to do both, in motor cars that were already unmatched in performance, appearance and value, is an achievement without parallel.

This is just what Oakland has accomplished in its new cars. More than 100 improvements have been added, including new Bodies by Fisher, Air Cleaner, Oil Filter, Four-Wheel Brake refinements and The Harmonic Balancer—

—yet prices are \$70 to \$350 lower.

The Oakland Six was outstanding before. Now it ranks above and apart, literally compelling preference.

Touring Car	1025	(Old Price	1095)
Coach	1095	(Old Price	1215)
Landau Coupe	1125	(Old Price	1295)
Sedan	1195	(Old Price	1545)
Landau Sedan	1295	(Old Price	1645)

ALL PRICES AT FACTORY

General Motors Time Payment Rates, heretofore the lowest in the industry, have been made still lower.

OAKLAND SIX
VICK BROTHERS

HIGH STREET AT TRADE TELEPHONE 1841

PRODUCT OF GENERAL MOTORS

OIL WELL BLOWS IN WHILE CREW BORES

Local General Distributor Tells of California Well Which Blew In

"Salem motorists are all quite familiar with the expression 'blow out,'" says W. R. Speck, "but few of them know what is meant by 'blow in' even though both terms belong to the automotive industry. The latter term is used in referring to an oil well that has just come in, which recently happened to Notten Well No. 6 of the General Petroleum Corporation at Ventura, California.

"This well blew in while the crew was reaming with the big forty feet of bottom. The depth at that time was 4,584 feet. Excessive gas pressure had been causing considerable trouble to drilling operations for several days. On the morning of June 24 the underground roaring started and soon the air was filled with greasy mud and falling timbers, shot upward by the pressure of the gas. This lasted but a few minutes, however, when the oil began to shoot upwards.

"A few hours later the well was temporarily quieted by pumping mud down the drill pipe, and the crew thus gained sufficient time in which to place in position a crude control. During the first night the well flowed at the rate of 5000 barrels per day, but since that time has dropped off slightly. The flowing pressure of the well is 400 pounds, and this must decrease considerably before permanent connections can be attached."

AMERICA INVITES WORLD TO SECOND MOTOR CONGRESS

Invitations are being mailed this month to all countries of the globe inviting automobile men everywhere to attend the second World Motor Transport Congress which will be held in New York January 11-13, 1926, during the National Automobile Show.

Assurances of participation have already been received from 50 countries speaking 16 different languages.

The National Automobile Chamber of Commerce is the host on this occasion which is a continuation of the first congress held at Detroit in May, 1924.

The economics and utility of motor transport were the chief topics at the first conference. This time emphasis is to be placed on sales, advertising, and service methods.

RAILWAYS TURN TO MOTOR TRUCKS FOR ECONOMY

It seems as if the branch line railroads of tomorrow will be rail-less. The locomotive and the box cars will be used for more profitable work and the branch line stations will be served by motor trucks operating over paved highways.

Recent activities of railway companies show a definite trend in this direction. Already thirty-five American railroads are using the motor truck for hauling freight and traffic experts are making studies to determine other locations where the motor truck can save money for the railroads.

PAVED ROADS AND RAILWAYS

The railroads have become ardent good roads boosters. Far seeing railroad executives have long ago seen the advantages of improved highways in enabling the farmer to haul his produce to the railway station for shipment. That feature in itself was of great value to the railways.

But now they have another cause for standing squarely behind the good roads movement. They no longer regard the motor truck as a competitor. In fact it is now considered as an ally and railroads are each year making more use of this new factor in transportation. Railroads are beginning to reap definite returns from the taxes they pay for highway construction.

ACTOR IS MARRIED

NEW YORK, July 31.—(By Associated Press).—William Faversham, actor, married Miss Edith Campbell of Phoenix, Ariz.

Help Prevent Forest Fires

EIKER'S GUARANTEED USED FORDS

PRICED RIGHT

THE BLUE FRONT

Liberty and Ferry

Phone 121

Camping—the most economical vacation

For little more than the cost of living at home, you can spend the most enjoyable vacation of your life. Freedom, rest and recreation, away from the conventions that surround you in your daily life. A vacation that breaks the monotony of things—that sends you back to your work with renewed energy. Careful planning is essential. Let "Western Auto" help you.

Specials for This Week

Wall Tents

An outstanding value at these special prices. Made of 10-oz. white duck and are of the regulation design with 3-ft. walls.

Size 8x10	\$14.35
Size 10x12	\$18.15
Size 12x14	\$23.35

Camp Axe

The axe is a very necessary part of the camp equipment. Buy one this week at our unusually low price. A high-quality steel head with hickory handle—has leather case for the blade. This Week Special \$1.48

Camp Stoves

A real meal, for that hungry "out-door" appetite, can be prepared on this Prentiss Waber stove. The gas tank and burners are the latest improved design—absolutely safe and it folds up like a suitcase.

Small size	\$5.25
Large size	\$7.85

Coleman stove—2 sizes—\$9.00 and \$12.50.

Larger size has oven for baking.

Wait!

Before you buy your new Radio Set, wait for "Western Auto's" announcement.

Volume Tone Selectivity Appearance

An Unusual Offer Watch for It!

"Western Auto" Tires

Know the tire you buy to be dependable. "Western Auto" Tires are the choice of thousands of motorists who have tried them all and have found in "Western Auto" Tires everything they expected—dependability—economy—safety.

Handy Stove Legs

Fits any gasoline or wood-burning stove and raises the stove to a height where you can do your cooking in absolute comfort. Price \$2.10

Palmetto Tents

These tents can be erected in just a few minutes by one person. No guy ropes are used and only one pole, which is jointed—tent is equipped with a heavy floor, screen window, pocket and an awning. 10-oz. khaki. Floor size 12x12 feet, height 6 feet. Price \$26.50

Floor size 8x11 feet, 2 doors, khaki	\$36.75
Floor size 11x11 feet, khaki, 2 doors	\$38.80

Victor Aluminum Sets

A good camp cook will appreciate this set with its three cooking pots, 6 and 8 quart, 2-quart coffee pot, 4 cups, plates, and two heavy frying pans with detachable cool handle. Complete set fits into the large pot. Price, complete, only \$10.50

Angelus Beds

When tired out after the day's camping, restful sleep is assured if Angelus beds are part of the camp equipment. Size of bed 48x76 inches—folds into a small unit. Price \$14.50

All-Steel Folding Beds \$11.25

FOLDING COTS

Each \$3.85

Folding Skillets

6 1/2 and 7 1/2

Coleman Lanterns

Turn Night Into Day

Gives more light in your camp than twenty old-style oil lanterns. The light is pure white—300 candle power and uses very little gasoline. Price \$7.50

Standard Auto Tents

White 8-ounce, 26-inch duck; size 7x7 feet, only \$9.50

Same tent in khaki, 10-ounce duck \$14.85

Lightweight Tables

Can be folded or set up in a few seconds. Size of this table is 24x12x24 inches. Handy for an extended tour or a day's outing. \$4.50

More than 125 Stores in the West

Western Auto Supply Co.

SALEM STORE CORNER High and Court

Help Prevent Forest Fires