

OWN YOUR HOME

PORTLAND CREAMERY IS BEING MOVED TO CITY

ANDRESEN & SON GETTING LOCATION IN SHAPE

Unsatisfactory Delivery of Milk Reason Given for Change in Manufacturing

Andresen & Son, of the Farmers' Produce company, formerly located at 160 South High and now located in one of the stores in the New Salem hotel, are rearranging their plant in order to make room for a creamery which they will move from their Portland cream station to Salem some time before the first of the month.

Mr. Andresen has operated one of the finest and most sanitary creameries in Portland for some time, and it is this creamery that he intends to move to Salem. He states that he will establish just as fine a plant here as the one he has maintained in Portland.

It has been impossible to get satisfactory truck connections between Salem and Portland for Salem cream. The truck that does the hauling seldom leaves the Salem station before 9 or 10 o'clock in the evening, and is always late in arriving at the station in Portland. All of the cream used in the Portland creamery of Andresen & Son is shipped from Salem.

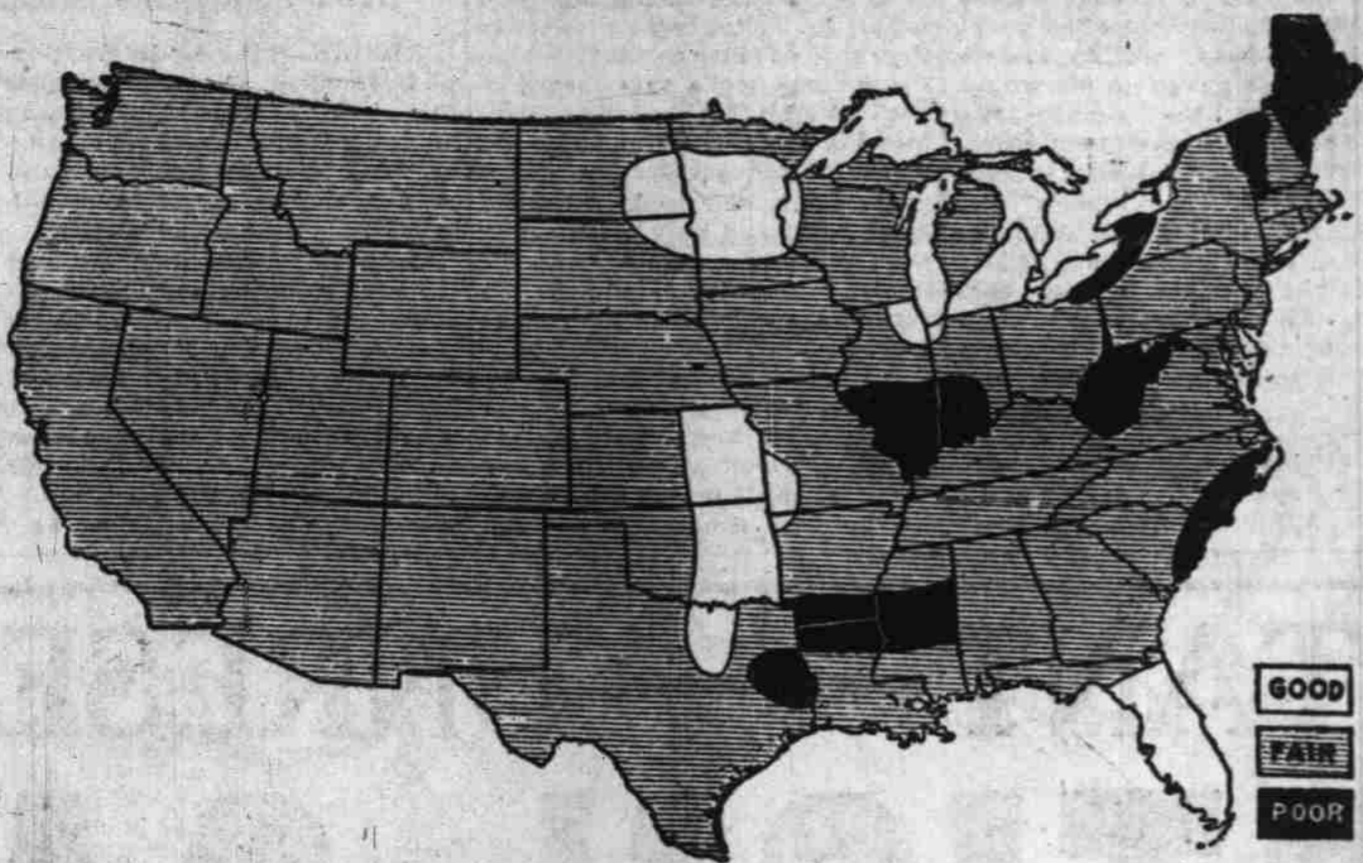
The creamery will have a churn capacity of 500 pounds of butter per day. This butter will all be shipped to Portland, where most of it will be retailed by a public market operated by Mr. Andresen.

As it would be impossible to handle poultry and cream at the same station, the company will erect a poultry warehouse and feeding shed on Oregon avenue.

STORES TO CONSOLIDATE

POWDER SUPPLY AND PAINT CONCERN ARE UNITED

The consolidation of Kennedy's paint shop, 241 Court, with the Gabriel Powder & Supply com-



This map shows business conditions in every state in the Union as shown in the June number of the Nation's Business, the official publication of the Chamber of Commerce of the United States.

GOOD
FAIR
POOR

pany, has been recently announced. The Gabriel Powder & Supply company will remove all of the stock of the Kennedy shop to 175 South Commercial, the present location of the Gabriel company.

The powder company store is to be remodeled to make room for the newly acquired stock. New shelves will be built along both side walls of the building and counters will be placed in front of each row of shelves. Additional help will be employed to accommodate customers.

APARTMENT PROGRESSES

ENGLE BUILDING READY FOR TENANTS SEPT. 1ST.

The new apartment house which Adam Engle, local contractor, is erecting on North Capitol street is beginning to look like a building. The stucco work will start in

about a week and it is expected the apartments will be ready for occupancy by September the first. The place will be known as the Engle Apartments.

Mr. Engle has five other houses under the course of construction and report that the activities in building are better than they were this time last year.

Poles Dedicate Monument at Lemberg to US Heroes

LEMBERG, Poland—The recent dedication of the monument to the three American aviators—Kelly, Graves and MacCullum—members of the famous Kosciuszko squadron who were killed during the war against the Soviets in 1919-1920, developed into a great pro-American demonstration.

The monument represents an American aviator with American and Polish arms in the background

and stands in one of the most picturesque parts of Lemberg cemetery. It was erected from funds contributed by a special committee headed by Mme. Ebenberger, patroness of the famous squadron.

ENGLAND PLANS LONG RANGE RADIO

LONDON—in addition to the big radio station now being built at Rugby, the postmaster-general is planning to erect another high-power station at Winthorpe, near Skegness, on the east coast. This station, when completed, is expected to be used for communication with Australia and India.

Lone Star Service Station and Camp Ground



1998 N. Capitol Street
John Williamson
Prop.
Also
Builder of Homes
for sale on easy terms.
If you are looking for a home call on us.

Baseball Now Best Money Making Sport in Islands

MANILA—That baseball is the most popular sport in the Philippine Islands was indicated when the total receipts at the Far Eastern Olympic games became known recently. The receipts at the six baseball games played among the Philippines, Japan and China amounted to \$9960, while football drew the next largest attendance, the total receipts for that sport being \$3961. The total receipts for all the events amounted to \$26,180.

It was expected that the receipts from the track and field events, which amounted to only \$3780, probably would have been much larger, had not Japan's athletes walked off the field as a protest against the disqualification of one of her runners for fouling on the second day of the meet.

WE'VE GOT THE TOOLS, AND EXPERT SKILL - WE'RE CERTAIN YOU WILL LIKE OUR BILL!

NELSON BROS.
255 Chemeketa Phone 1906

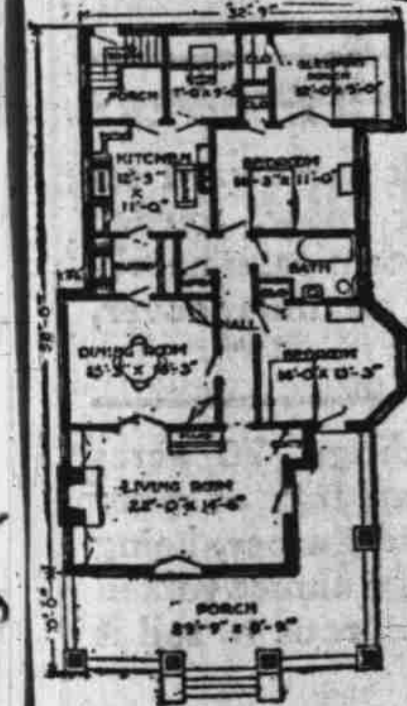
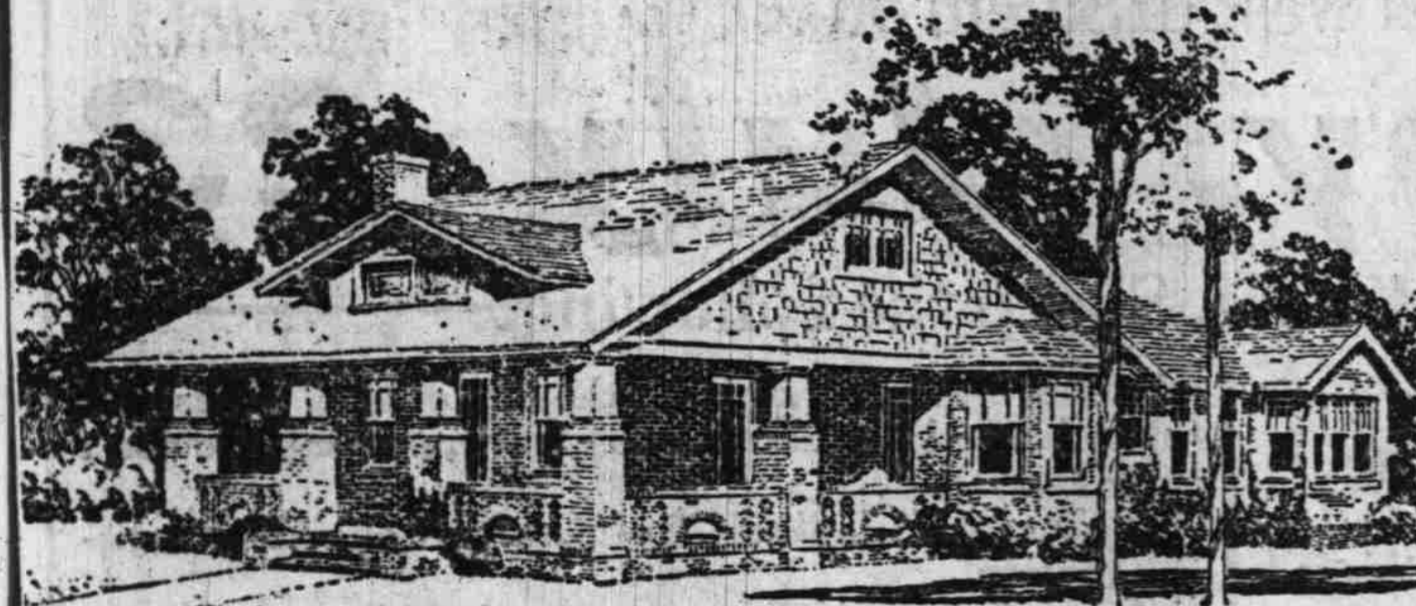
We Are Continuing Our 20% DISCOUNT OFFER

For Another Week ON ALL Awnings, Porch Curtains and Sleeping Porches

We will come to your home, or place of business, make estimates any time of day or evening at your convenience without charge or obligation. We are always pleased to show you samples.

Salem Tent & Awning Co.
Manufacturers of Tents, Awnings and Canvas Goods of All Descriptions
FRANK MONNER
729 N. Liberty St., Salem, Ore. Telephone 415

Bungalow of Decided Western Style



THE wide-spread gables, the dormer, the over-hanging eaves, the low, broad porch suggest the origin of this type in the Southwest where protection from the summer sun is always grateful. While the attic might, on occasion, be fitted up as a low room, its chief function is to provide ventilation and insulation from the heat.

The roof line is very pleasing with its low, rambling sweep. The porch in this case is made somewhat more secluded by the pleasing brick parapet which would lend itself to very artistic treatment. A few dollars added here to the skilled craftsman's pay could be made to enhance the beauty and desirability of the house. Bear in mind that very often a little more expenditure at the beginning will pay for itself many times, in the long run.

The living room, occupying the entire front of the house, is accessible from the porch either on the front or side. The fine brick hearth is flanked by bookcases which suggest delightful winter evenings.

The dining room is entered through folding doors from the living room or through the hall, and opens to the kitchen through a pantry, with cupboards and also butler's sink, which, if desired, could be converted into a breakfast alcove leaving the present breakfast room for other purposes. The ample kitchen has all modern conveniences and an enclosed service porch.

The sleeping quarters—two bedrooms, a sleeping porch and the bath room—are secluded. The sleeping porch can do duty the year round for it is entirely glazed and has a good closet.

The basement is provided with laundry, heating apparatus, vegetable cellar, and proper storage space, but may be restricted in area at the option of the builder. The ceiling height is 8 feet 6 inches and the content 38,000 cubic feet.

Altogether this is an unusual house, both outside and inside, but above all it is decidedly a comfortable and convenient house to live in.

PAINTERS

CARPENTERS

SEVERAL things in and about your place are probably in need of repairs or of a good coat of paint. We're ready to supply the material to put your property in tip-top shape; and when the job is complete you'll agree that our charges are mighty low.

Prompt delivery, good service and a fair deal is our motto

We handle Upson Wall Board and Tile. Plaster Board and all kinds of Building Paper. Sherwin-Williams Paint, Lead and Oil

No question but that it is the best paint made

Cobbs & Mitchell Company
"Everything in Building Material"
349 South Twelfth Street, Salem, Oregon. Phone 813

A Good Job Well Done

The Job is Finished and the Owner is as Proud of it as We Are.

This beautiful home, tucked back among the flowers and trees is of modest cost, but the worth while pride of home ownership is reflected in every inch of it.

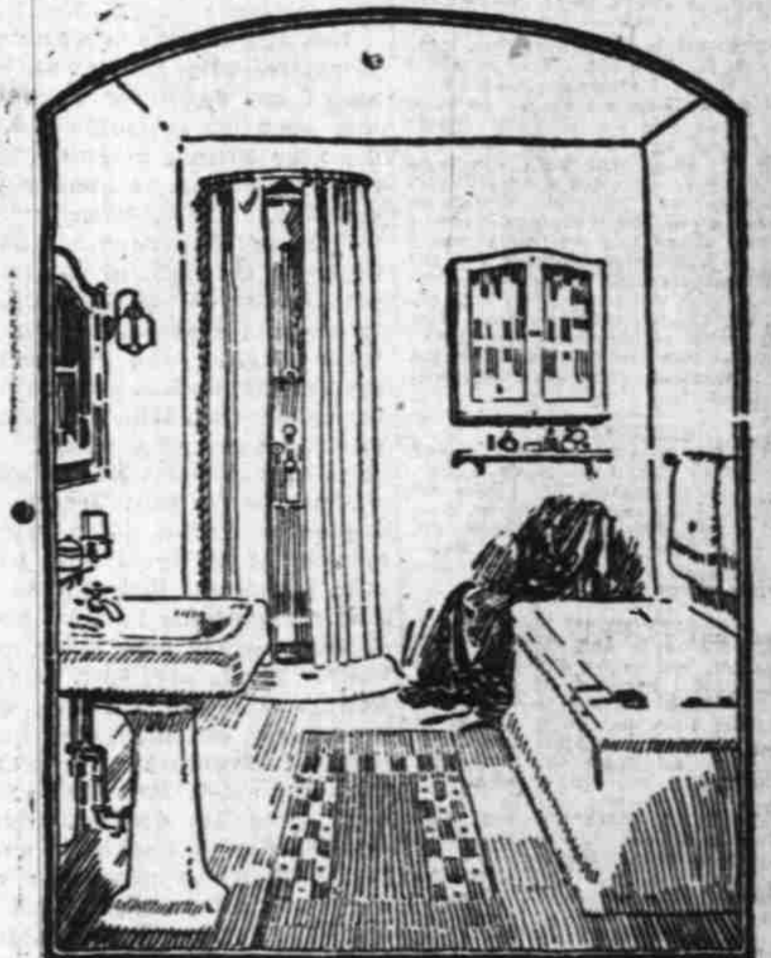
There are many homes that need paint as much as this one did. We cannot be satisfied unless we can make your home beautiful too. We guarantee skilled, careful craftsmanship and we use only the best materials. Telephone us today and let us help you complete a thorough job in making your home clean, attractive and safe against sun and storm.

Building Materials

For the Interior

IF YOU ARE GOING TO BUILD, IT WILL PAY YOU TO SEE US FOR

- Ruberoid & Certain-teed Roofings
- Deadening Felts
- Asphalt Sheeting
- Building Papers
- Perfection Plaster Board
- Pabco Paints & Oils
- Pabco Varnishes & Stains
- Peerless Built-ins
- Mailo Mail Boxes
- Cedar Shingles
- Standard Gypsum Plaster
- Waterproofing for Cement
- Pratt & Lambert Varnishes
- Murphy Varnishes
- Cabot's Shingle Stains
- Clinton Fabric
- Mantle Brick
- Mantle Tile
- Metal Lath, Corner Bend
- Marshall & Steran Wall Beds
- Ricketson's Mortar Colors
- Cabot's Quilt—heat and sound deadeners
- Duplex Joist Hangers and Beam Caps
- Concrete Hardeners
- Cabot's Shingle Stain
- Ruberoid Shingles
- Certain-teed Shingles
- Basement Sash



As washable as tile itself!

A COAT of Barreled Sunlight will make a bathroom and kitchen walls—and woodwork everywhere—as easy to keep clean as white tile!

Barreled Sunlight is a white paint made by a special process and produces a surface so smooth that the finest particles of dust or dirt cannot sink in. A damp cloth will always wash it spotless.

Barreled Sunlight is easy to apply. It flows readily and leaves no brush marks. It requires fewer coats than enamel, is guaranteed to remain white longer and costs less.

Where white is not desired, Barreled Sunlight can be tinted just the color you want. Comes ready mixed in cans from half-pint to 5 gallon size. One coat is generally sufficient over a previously painted light surface. Where more than one coat is required, use Barreled Sunlight Undercoat first.

Barreled Sunlight

DU PONT Explosives IANT

175 South Commercial **GABRIEL** Telephone 728
POWDER AND SUPPLY CO.

CLEAN-UP AND PAINT-UP!