

FORD TRUCKS ARE TO BE EXHIBITED

National Demonstration To Be Observed By Salem Distributors

The coming week has been designated as National Ford Truck week and the Valley Motor Co. has arranged for a complete showing of Ford built truck bodies.

Entrance of the Ford Motor Co. into the manufacture of commercial bodies indicates a new and important advancement in this division of motor transportation since it shows that Ford is bringing into delivery and hauling services the same low cost and high



This Ford truck body provides full protection for merchandise and is meeting high favor with firms requiring this kind of delivery unit. Canopy top and side curtains protect the load from weather and the screen sides and end doors protect it from theft.

Arrangements have been completed for a truck parade through the business streets, starting at 1 o'clock on Wednesday, July 15.

Announcement is also made that the Valley Motor Co., will be prepared to give demonstrations of any of the units and those interested are invited to enter their requests for the demonstration as early as possible.

The Ford built combinations for the famous Ford one-ton truck chassis include the open express type, the express type with either screen sides and canopy top or with top alone, and the stake and platform body. This latter body also is of particular interest to the farmer and truck gardener, for it is adaptable to every agricultural hauling requirement as it may be used with either grain or cattle sides. With stakes it provides unusual space for carting garden produce.

A closed cab, adaptable for use with any of these bodies, also is

Other Ford truck equipment includes the open express type body and the stake body which may be converted into a platform and for farm use is adaptable to either cattle or grain sides. The closed cab on all the bodies affords comfort and protection to the driver, provided and has grown greatly in popularity since its introduction. It is of all steel construction, roomy, with removable panels in the back and affords complete protection for the driver in inclement weather, with ample ventilating facilities.

The displays also will include the new pickup body, which is mounted on the rear of the Ford runabout, providing a light delivery car which meets a variety of requirements where quick delivery is an important factor.

from Roy H. Swift, traffic manager, stage terminal, Portland.

GARDNER EIGHT-IN-LINE DELIGHTS KING OF SPAIN

An American-made car—a Gardner Eight-in-line Brougham—received the most careful attention of King Alfonso XIII upon the occasion of his recent visit to the automobile show held during the latter part of May in the industrial building at Barcelona, Spain. His Majesty expressed his delight at the smart appearance of the Gardner, and the completeness of its equipment.

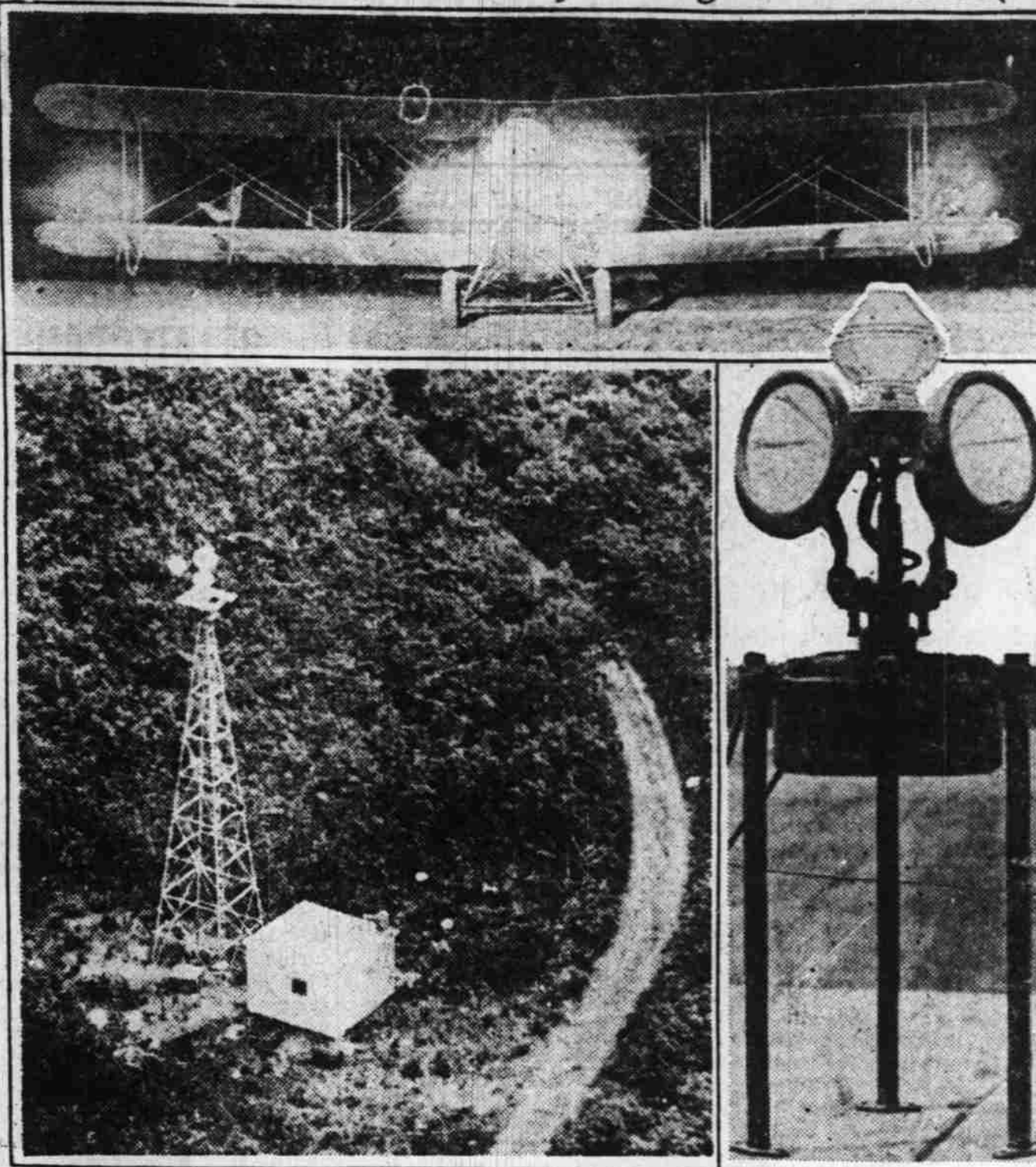
In Spain, the Barcelona exhibit ranks with the big annual automobile show at New York. Virtually all well-known European cars are displayed, and usually a number of America's finest automobiles are shipped abroad for this event. European society turned out almost en masse, and the King of Spain is the guest of honor.

FORDS TO BE DISPLAYED

National Truck Display Week, July 13th to 18th, local distributor, Valley Motor company taking part with parade Tuesday, July 14, showing Ford trucks with various styles of bodies.

Arlington—Rapid work on new McFadden hotel and on Vendome hotel annex.

Engineers Blaze Trail in Sky for Night Mail Planes



One hundred and fifty beacons of varying degrees of brilliancy, which mark the route of the new night air mail service between Chicago and New York, represent months of toil on the part of engineers, who had to blaze a trail of light in the sky under all sorts of conditions. A plane is seen preparing to leave Chicago. At left is a beacon in the wilderness, where there isn't a place to land in miles. At right is seen the type of beacon used: four powerful lights mounted on turn table towers.

HUGE FLOES OF ICE BAR M'ILLAN EXPEDITION

ARCTIC EXPLORERS MEET SERIOUS DIFFICULTIES

Amount of Ice on Labrador Coast Declared By Natives to Be Unusual

WASHINGTON, July 10.—(By Associated Press.)—Unprecedented ice floes along the Labrador coast was reported to the national geographic society today as likely to place unexpected difficulties in the path of the MacMillan Arctic expedition. This report, however, differed somewhat from a message to the navy department earlier in the day which indicated that much less ice than usual for this time of the year was found in the vicinity of Hopedal harbor from which the expedition expected to depart at 2 a. m. today. No message filed since that hour has been received here tonight.

Cape Harrigan, some 400 miles north of Newfoundland was named by Commander MacMillan in the message to the geographic society as the point for which he would head after leaving Hopewell and

from there he planned to push 200 miles further north to Camp Murgold.

His message gave a rather detailed narrative of how members of the expedition spent their time in the little Eskimo village of Hopedal. The mercury there was said to have climbed to a "balmy" temperature of 65 degrees which afforded "a striking contrast to the fields of ice through which we were forcing our way two days ago and the fact that even now with aid of a powerful telescope as far as the eye can see north, the waters inside of the islands are jammed with ice."

Despite the temperature, the water warmed to only 36 degrees, the message said relating that "misled by the balmy air we decided to test the alleged buoyancy of a new type of aviation suit supposed to act as a life preserver as well as being a warm regulation cold weather aviation cover—the suit was buoyant."

This message was picked up by D. C. S. Comstock, East Hartford, Conn., and relayed to the society.

Another message also was forwarded today by Jesse W. Holland, Brooklyn, N. Y., and it too, mentioned the ice floes saying: "The amount of field ice on the Labrador coast is almost unpre-

cedented. Old fishermen declare that it is the worst season they have experienced."

WAR MANEUVERS STAGED

DEMONSTRATION AT CAMP LEWIS CALLS FOR ACTION

TACOMA, July 10.—Demonstrating what the combined support of an army tank advance and a Howitzer barrage can accomplish in actual warfare, 1,000 regulars waged a merry battle in the broiling July sun at Camp Lewis this afternoon. The maneuvers, which occupied some three hours, were called by Maj. Gen. W. H. Johnston, commanding general at Camp Lewis, highly successful and instructive.

The two forces, the blues and reds, consisted of men from the Fourth infantry with one tank company and a Howitzer platoon. Col. F. J. Morrow, chief umpire for the affair, gave the decision to the blues, which was the attacking force.

DISTANCES GIVEN TO SUMMER RESORTS

Following Is Distance Taken From Statesman Car Speedometer

Where will you spend your vacation? This question may be easily answered if you will see The Statesman's resort section carried in each Sunday's paper. Look for the two full pages in this issue with a special vacation border. Here we give the routing and distances to all resorts that are carrying advertisements on these pages. We will gladly give any other information about any of these resorts to those who telephone or call at The Statesman office. Ask for the auto editor.

Pacific City—Via Amity, Bellevue, Sheridan, Hebo, Cloverdale, 80.6 miles. Via Dallas, Hebo, Cloverdale, 70 miles.

Neskowin—Via Amity, Sheridan, Hebo, 85.2 miles. Via Dallas, Hebo, Cloverdale, 74.6 miles.

Delake—Via Amity 102.8 miles. Via Dallas, Grand Ronde, Hebo 92.6 miles.

Netarts—Via Amity and Tillamook, 109.7 miles. Via Dallas, Tillamook, 90.1 miles.

Oceanside—Via Amity and Tillamook, 103 miles. Via Dallas and Tillamook, 92.4 miles.

Bay Ocean—Boat service from Bay City, 100 miles from Salem.

Gerbaldi—Via Amity, Tillamook, 104.4 miles.

Rockaway—Via Amity and Tillamook, 109.7 miles.

Manhattan—Via Amity, Sheridan, Hebo, Tillamook, Rockaway, 111 miles.

Manzanita—Via Amity, Tillamook, Rockaway, Wheeler, 124 miles.

Cannon Beach—Via Tillamook, 144.6 miles. Via Portland, Astoria, Seaside, 191 miles.

Seaside—Via Tillamook, 148.5 miles. Via Portland, Astoria, 180 miles.

Gearhart—Via Tillamook, 151.5 miles. Via Portland, Astoria, 177 miles.

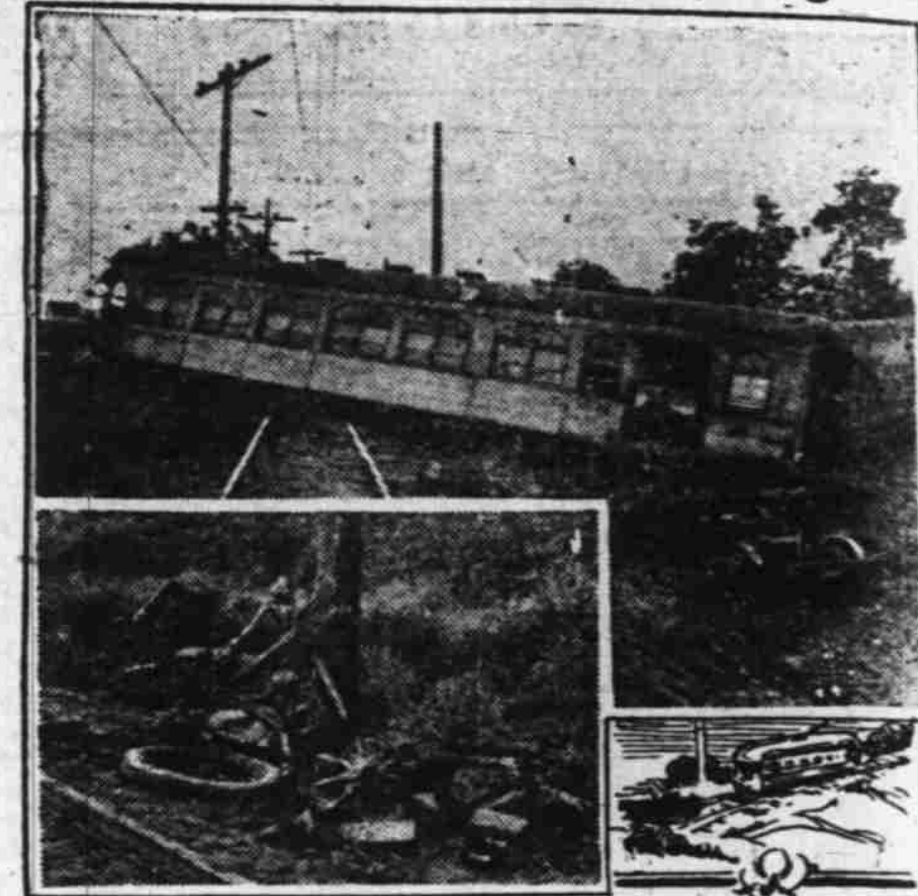
Newport—Via Corvallis, 98 miles.

Sparks Ranch, McKenzie River—Via Eugene, Springfield, 124 miles.

McKenzie River Bridge—Via Eugene, 133 miles.

Nimrod Inn, McKenzie River—

Interurban Derailed, Injuring 12, as It Hits Auto, Killing Six



Agitation against grade-crossing has been resumed in Illinois as a result of an accident at a crossing near Bloomington, Ill. An interurban was derailed, and 12 persons injured, when the car struck an automobile in which six persons, an entire family, was riding. All of the six were killed. The photos show the wrecked trolley and the remains of the auto.

Via Eugene, Springfield 118 miles. Belknap Hot Springs—Via Eugene, Springfield, McKenzie River, 129 miles.

NEW TIRE SIGN
Zosel's Tire Shop at the corner of Commercial and Ferry streets installed a new electric sign on the front of their store. The sign advertises the Seiberling Tires which they sell.

TILLAMOOK STAGES IMPROVE SERVICE

Daily Service Now Established as Far South as Taft; Also to Oceanside

On July 1 the Portland, Newberg, McMinnville, Tillamook Stages, Inc., added new branches to their present service. The Taft branch runs from Hebo south to Cloverdale, Pacific City, Oretown, Neskowin, Otis, Devils Lake and Taft. This is the first stage to operate south of Neskowin. Regular daily service has been established which connects with Parkers Salem-McMinnville stage leaving Salem at 1:10 p. m. The company has also added a branch from Tillamook, Netarts and Ocean Side connecting with the Parker stages which leaves Salem at 1:10 p. m. It is now possible for passengers to get as far as the mouth of the Siletz bay, and the company is able to take those who desire beyond Taft as far as Siletz river or Kernville. These additional branches now complete the network of stage lines from Seaside to all beaches south. Time tables for the stages operating from Portland or from Salem will be sent out to those requesting them.

Now Autos Go Sea-Riding



Naval Hupmobiles On Honolulu Docks Center of Interest Among Personnel.

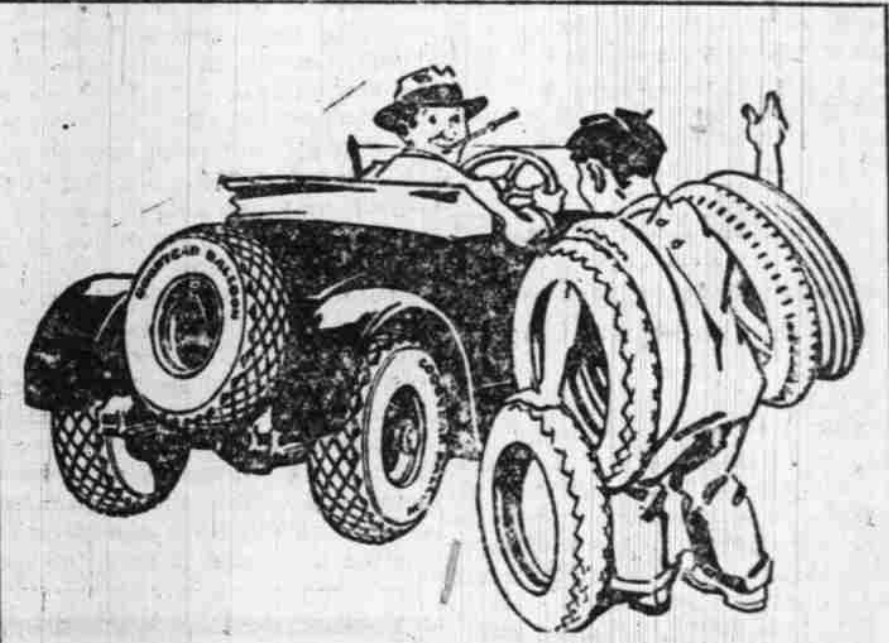
When the United States Navy went to sea and preparations were made for the gigantic Hawaiian maneuvers, special permission was given to a limited number of officers and rated men to transport their automobiles to Hawaii and Australia.

Principally to be noticed among the motor cars strapped aboard battleships and even on several of the destroyers, were Hupmobiles.

"Next to his ship, the Navy man's pride is in his motor car," once commented Captain Thomas T. Craven, in charge of the Naval Air Station, North Island, California. Captain Craven drives a Hupmobile. It has been said by officers of the

U.S.S. Concord, Light Cruiser Commanding the Destroyer Squadrons of the Scouting Fleet, Arriving in Honolulu.

United States Navy that the Hupmobile has been so popular with men in the Navy because like the Navy, "it is always ready." The sturdiness of the car, its certainty of performance, its absolute dependability—these are the qualities which have recommended Hupmobile to the Navy, officers and men alike.



TRADE in your TIRES on NEW GOODYEAR BALLOONS

Greater riding comfort. Safer driving. Less wear on your car and your nerves. They cost very little more than your present tires and we'll give you a liberal allowance for your old ones.

ARE YOU ON?
Day and Zosel
Corner Commercial and Chemeketa Telephone 66

Don't Take Our Word

That the **PHILCO** Dynamic Battery

Is the Highest-Powered, Longest-Life Battery Ever Built for Automobile Service

ASK ANY CAR OWNER WHO HAS ONE

Once you have tried a Philco—proven its tremendous reserve power and freedom from ordinary battery troubles—you'll never again put up with just an ordinary battery.

WE KNOW
E. H. BURRELL
BATTERY AND ELECTRICAL SERVICE
236 North High Street Phone 203



BEN SEZ:

"Remember" if after you have owned one of our used cars one week and you decide you like some of our other cars better, you can exchange at face value on any used or new car we have of equal or higher value.

Studebaker—1921 touring, 33x4 1/2 new cords all around	\$675
Dodge—1918 touring	95
Ford—1920 touring, light weight pistons	160
Buick—1918 touring, new tires	350
Oakland—1918 touring	265
Overland—1924 touring, loaded down with accessories	450
Overland—1922 touring	350
Overland—1922 touring	350
Overland—1923 sedan	550
Oakland—1918 touring	150
Chevrolet—1920 touring	160
Dort—1920 touring	300
Ford—1923 touring	285
Overland—1923 touring	385
Gardner—1924 coupe, "a snap"	750
Willys Knight—1924 coupe sedan	1150
Oakland—1924 sedan	1275
2 One-ton Samson Trucks—each	375
1 GMC 1 1/2-ton truck—completely overhauled	750

These cars have practically all been repainted and reconditioned and must be seen to be appreciated.

Vick Brothers
High Street at Trade