

GRAIN HELD CURSE TO FARMERS OF VALLEY

SOIL ROBBED OF STRENGTH, DOERFLER DECLARES

Alfalfa Advocated to Re-Vitalize Ground; Is Grown on Land Said Worthless

The Marion-Polk County Realtors were given a practical talk by a practical farmer Thursday noon by F. A. Doerfler, field representative for the First National bank, and stockman of the Waldo Hills. "Grain raising has been a curse to farmers of the Willamette valley," declared the speaker. "The soil has been robbed of its vital element by the crop and nothing put back to give it strength. The grain crops have taken out more than they put in, and often the farmer has paid more money to raise the crop than he has secured from the sale of the product."

Alfalfa is one of the newest crops in the Willamette valley which is doing much to revitalize the soil that has been robbed by the grain crops, according to the speaker. "Alfalfa is one of the most important crops which can be grown on some of the now worthless land of the valley. It is a fairly permanent crop which, by judicious care can be made profitable. Then, too, the farmer is saved the overhead of plowing, which is important when it is realized the crop will last from 20 to 100 years," continued the speaker.

Flax can be grown profitably here, even if it is hard on the land. The proper rotation of crops will allow for more successful farming methods, consequently, their efforts will not be a failure, and over-production of crop will not follow in some cases. Mr. Doerfler exhibited several specimens of leguminous crops that could be successfully raised by farmers on soils that had been depleted of its plant foods.

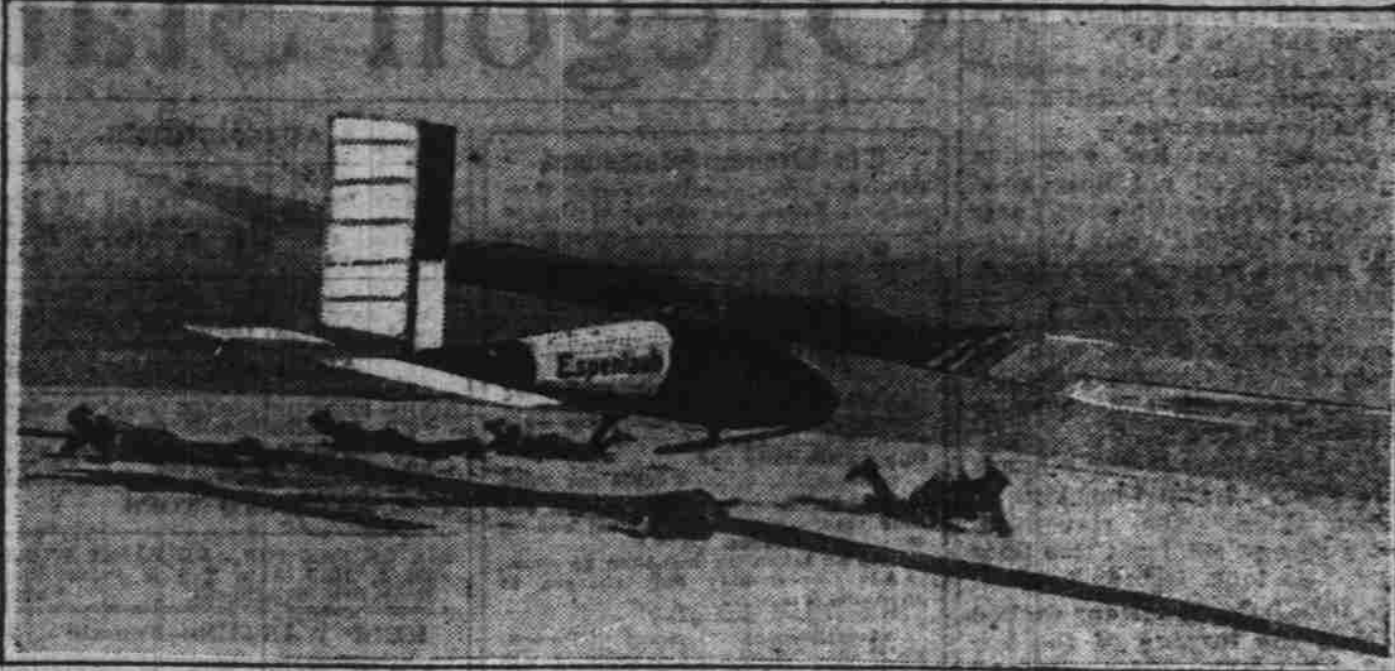
ISLAND CASE RESTING

GOVERNMENT LOOKING INTO LEGALITY OF LEASE

No new developments in the state's fight to recover Sand Island, in the mouth of the Columbia river, are expected before June 3, George Neuner, United States district attorney, having been granted until this date to determine the legality of the situation. The state is seeking title to the island in order that it may lease it to the Columbia River Packers' association. The island was ceded to the government in 1864 on condition that it be used for military purposes. Instead of doing this, the government leased it to private fishing interests and has derived approximately \$40,000 annual revenue.

Are you telling your friends about the Slogan section of The Statesman? This paper's policy is for the upbuilding of the city and the surrounding farming commu-

Germany Develops Motorless Land and Water Plane



Germany continues to lead the nations in experiments with gliders. It is now concentrating on the development of a motorless plane which will take off and land safely on land or water. The photo shows a test flight near Berlin, in which a glider of this type, with runner-like pontoons on front and rear of the fuselage, made a false start and a sudden descent, causing the land helpers to rush to safety.

FISHING IS GOOD OVER WEEK-END

Where to Go and How to Get There is Told by George K. Cadwell of Anderson's Sporting Goods Store.

Wilson and Trask Rivers—Via Tillamook. The lower parts of the rivers during June affords good sea trout fishing using spinner and chub. Fly fishing for these trout is best just above tidewater the principal flies being English Admiral and Royal Coachman. No. 6 hook.

The Kilchis River—Is a beautiful mountain stream that offers the same kind of fishing as the Wilson or Trask. Many ideal camping spots are to be found along this river, with the fish reported to be plentiful it offers a very attractive week-end trip.

Neskowin—Via Rickreall, Amity and Cloverdale—Slab creek at Neskowin. Some very good sea trout fishing is to be had in this creek. Spinner and chub. English Admiral and Royal Coachman flies being the baits most used.

Salmon river also offers good fishing, the road being open now from Neskowin to Salmon river. Neskowin offers a very attractive week-end trip with lots of sea fishing as well as trout fishing. Hotel accommodations and camping grounds at Neskowin.

McDowell Creek—Via Albany and Lebanon—Some very favorable reports from this stream during the week. Some fairly good catches were made on spinner and chub. Flies also are being used with good success, Royal Coachman, Blue Upright and McInty being the best flies.

Wiley Creek—Via Lebanon to Foster—Some nice catches were made on this stream with spinner and chub. Royal Coachman, Blue Upright and McInty Flies. These two streams offer a good one-day fishing trip, with the roads being in fine condition.

Sturdy Outdoor Women Excel in Embroidery

LONDON—The modern girl is taking more intelligent interest in needlework than did the early Victorian, according to Mrs. Mary Antrobus, who is restorer by royal warrant of the tapestries in Holy-

road, Windsor Castle and Buckingham Palace.

Mrs. Antrobus acted as one of the judges at an international needlework contest here, and is considered one of the greatest authorities in Europe on these materials. Hunting women, and the girls who play hockey and tennis who do the best embroidery today, in the opinion of Mrs. Antrobus. Needlework fulfills a side of their lives which sports do not, she says, because sports are not creative and needlework certainly is.

Boost for the linen mill. It will bring prosperity to Salem and to the entire Willamette valley.

NEW POLICE COLLEGE TO TRAIN RECRUITS FROM OTHER CITIES

NEW YORK—A piece of detective work, appropriately underlines the newly established Police academy which Commissioner Enright has designated as the future West Point of the nation's bluecoats.

Last year police headquarters was agog over the mysterious and prolonged absence abroad of Inspector John J. Noonan, now the academy's first commandant. He had slipped away with no one knowing it, and the question was: who was he after?

The question was never answered, for it developed that the inspector's secret mission was merely to do some quiet and correspondingly freer sleuthing the police the world over, in order to make the present Police academy the sum of the latest international ideas in police training.

Inspector Noonan, it has been explained, was sent overseas by Commissioner Enright with credentials to Scotland Yard and the police chiefs of Paris, Vienna, Berlin, Rome and other capitals. He was ordered to keep lips sealed and eyes and ears open, and saturate himself with the best in training facilities and methods to the end that the West Point dream might be realized.

Commissioner Enright announces that the academy will be open not only to New York police and police recruits, but also to those from other cities. A limited number will be accepted from outside New York who will be trained to serve as instructors at home.

The academy will have special departments devoted to training men as police clerks to do the highly specialized police paper work; to prepare traffic experts to meet the growing complexity

Two Farm Champions



Miss Ritchie Stevenson, student in the school of agriculture, University of Kentucky, has just been crowned champion milkmaid of Kentucky. One of the cows she milked in making a record was Cocotte's Mata Lass, prize Jersey, shown here. The Jersey is averaging 51 pounds of milk a day now in a new championship test.

Society

The members of the Beta Chi sorority were hostesses at a beautifully appointed formal dinner last evening at the Gray Belle given in honor of the six new members of the organization — Miss Margaret Arnold, Miss Phoebe Smith, Miss Margaret Wood, Miss Louise Nunn, Miss Marjorie Christiansen, and Miss Clara Jasper.

Rose pink peonies centered the dinner table where covers were placed for 44. Miss Caroline Stober presided as toastmistress, the following responding, Miss Eva Tacheron with "Can's You Hear My Plea?" Louise Nunn, "Find for Me the Girls I Love"; Remoh Trydr with "Tell Her I'll Be True"; and Dorothy Owen with "Fate May Part Us, Years May Pass."

During the evening Mrs. E. C. Richards, as honorary house-mother, was presented with her pin in token of this relationship.

Alumnae members of the sorority who were guests for the annual dinner were: Miss Loriet Blatchford, Mrs. Kenneth Legge, Miss Pauline Rickli, Miss Elaine Oberz, Miss Caroline Stober, and Miss Anne Lavender.

Individuals oh to private enterprises.

Communities securing the trophies are to pay charge of transportation from Port Newark terminal, or Raritan arsenal, N. J.

MAY OBTAIN TROPHIES

CAPTURED WAR MATERIALS AVAILABLE AT PRESENT

Tentative regulations for the distribution in Oregon of captured war trophies are being mailed from the office of the adjutant-general to different cities and organizations of the state.

By a recent act of congress, equitable distribution of the captured war devices and trophies was provided for. Materials so allotted that communities and public institutions and organizations have opportunity to secure the trophies although no part of the Oregon allotment will be sold or given to

SUMMER COLDS are lingering and annoying. The very first night apply **VICKS VAPORUB** Over 17 Million Jars Used Yearly

Memorial Day

Well may we pause in our material tasks to pay homage to America's martyred dead. The high ideals for which our soldiers fought and fell will ever be a beacon-light guiding America toward its highest destiny.

All due reverence for the dead—and healthful recreation for the living! That is Memorial Day's twin message. Let us gain all the healthful pleasure we can over the week-end, so we may go back to our daily work with renewed vigor and enthusiasm.

6%

Year in and Year Out

If you could invest your money so as to bring you 6% year in and year out, it would be a profitable investment, would it not?

This is exactly what our 6% First Mortgage Collateral Trust Bonds are doing for many individuals in the Salem community.

These Bonds combine safety with high return and are issued in denominations of \$100.

Let us refinance your present mortgage on more favorable terms

MORTGAGE LOANS
BONDS AND INVESTMENTS
2nd Floor, OREGON BLDG.
SALEM, OREGON
FREE OF CHARGE

HAWKINS & ROBERTS INC.

MEMORIAL DAY

In sincere tribute to those departed ones

Our Store Will Be Closed SATURDAY

C. and C. Store

Our Store Will Be Closed Saturday Afternoon

In reverence for the departed ones

For the convenience of those who need new haberdashery for the afternoon and Sunday we will be

Open From 7 to 12 A. M.

CAPITAL EXCHANGE
342 North Commercial

J.C. Penney Co. A NATION-WIDE INSTITUTION - Incorporated
571 DEPARTMENT STORES
160 N. Liberty, Salem, Oregon

Our Store Will Be Closed Friday

Year after year, until time mellow with hoary age, Memorial Day ever will recall sweet-sad and tender-anguish memories and thoughts of yesteryears—of those dear and loved who fell on the field of strife; who perished that a Nation and a World might be preserved for posterity; that civilization might not be forgotten.

Every mindful of those great sacrifices and that in our small way we may give what little homage to the heroic dead that is within our limited power, our store will remain closed all day Saturday — Memorial Day — opening for business on Monday morning.

J.C. Penney Co.

MEMORIAL DAY. CLOSED SATURDAY

To CARE for the needs of those who are spending the day in paying respect to their departed ones our store will remain open.

Ace

187 NORTH HIGH STREET
SALEM, OREGON

MEMORIAL DAY. CLOSED SATURDAY

In Honor of Those Who Have Passed Beyond

Capital Bargain House

MEMORIAL DAY

Army and Outing Store

NEXT DOOR TO BUSICK'S

189 N. Commercial. Salem, Ore.