

OWN YOUR HOME

BANK REMODELING JOB GETTING ALONG FINE FOUNDATION FOR ELEVATOR SHAFT NOW IN PLACE

Several Offices Moved to Make Room for Construction Work Says Erickson

The job of remodeling the United States National Bank building is going forward all the time, according to Fred Erickson, contractor in charge of the work. The foundation for the elevator shaft, and part of the extension, has already been made and the work is being rushed forward.

Several offices have been moved away from the location of the shaft, thus causing a new arrangement among some of the business and professional men of the building. A readjustment has been made, however, without so great an inconvenience.

Just how soon the building will be completed depends upon the amount that is done, although the present program is well carried out, nothing to delay the job is counted upon.

WADING POOL ASSURED

KIWANIS PLEDGE ACTION SURE THIS SUMMER

The Kiwanis club will provide a wading pool for Salem kiddies, during the coming summer, it is announced by Fred Erickson, member of the local club. Just where the location of the pool will be has not been settled, but will be selected at an early date. This much is certain, however, declares Mr. Erickson, the Kiwanis club members are to do overalls and shovel concrete.

"Yes, all are to shovel concrete," was the comment of the speaker.

The Kiwanis are to arrange with some one to be present during the wading hours for the children, it was brought out at the meeting.

SPECIAL MEMORIAL DAY SERVICES ARE PLANNED

CORVALLIS GETTING READY FOR BIG OBSERVANCE

Military Units of O.A.C. Will Stage Special Stunts Featuring Cavalrymen

Special Memorial day exercises will precede the military tournament at Corvallis May 30. The grand Army of the Republic, and the American Legion will be given special recognition. The national salute of 21 guns will be fired.

In response to the invitations sent out to high school and grade school students in adjoining counties, 1500 acceptances have already been received by the tournament director, Captain T. C. McCormick, assistant professor of military science and tactics.

In addition to the Memorial day exercises, each unit of the military department will put on special stunts or drills to demonstrate the work taught in that division. The four divisions here are cavalry, field artillery, infantry, and engineers. The cadet band, under the direction of Captain Harry L. Beard, will play during the review and parade of the cadet corps.

A polo pony stick bending contest is being coached by Major Herbert O'Dell, associate professor of military science and tactics. In this contest, three women from the faculty riding class and three men from the cadet corps will form the opposing teams. Each contestant will serpentine through five stakes placed at intervals, striking the end before returning through the stakes. The one who passes through the stakes in the least time wins.

Captain Glenn S. Finley, assistant professor of military science and tactics, is directing a series of cavalry, drill formations, complete with arms. The stunt will include a fight on foot and a charge with drawn sabers.

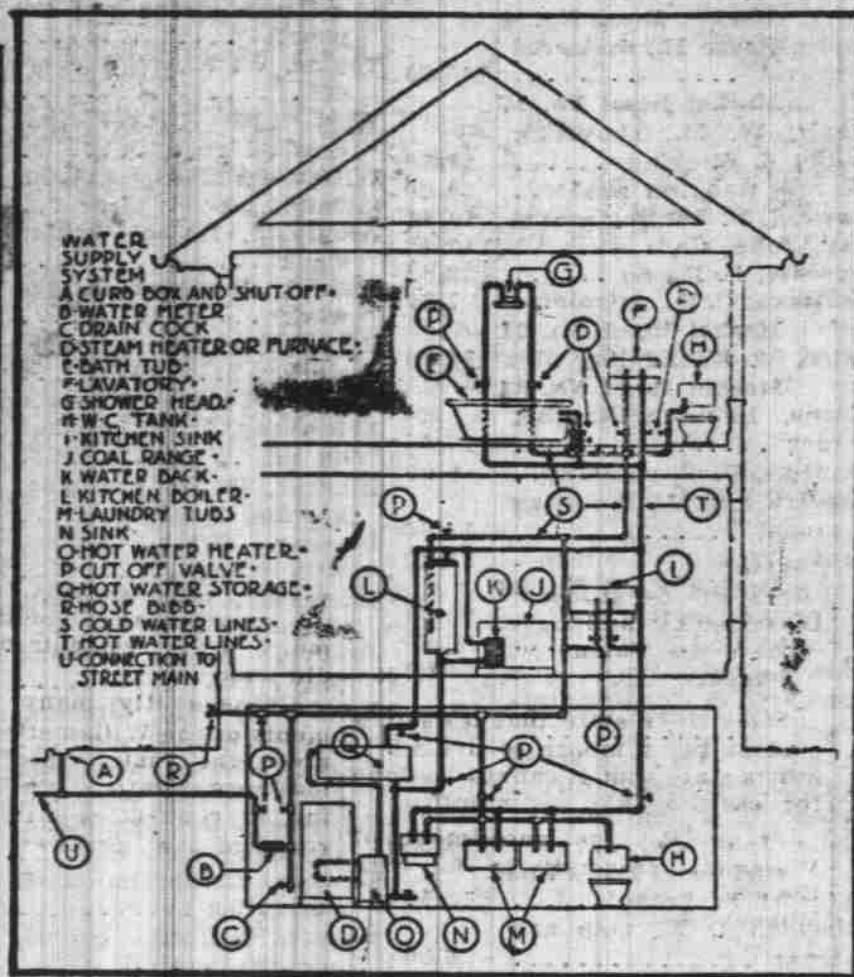
FROM YOUR PLUMBING I CAN GUESS—JUST YOUR STATE OF HAPPINESS



NELSON BROS. 235 Chemeketa Phone 1900

Plumbing Hints for the Home Buyer

Advantage in Rustless Pipe And Shut-off Valves



GOOD health and comfort in the home are not possible without an adequate and efficient plumbing system. It is the source of water supply and the 24-hour-a-day servant of household sanitation.

Modern plumbing systems comprise what may be described as two units. One unit is for sanitation and drainage; the other furnishes water supply. A typical water supply unit is illustrated in the diagram. The cold water lines are shown in outline; the hot water lines in full black.

Every supply system should incorporate a drain cock (C). This is placed at the low point of the system and every main slopes toward it. When the house is to stand empty for any length of time the system should be shut off by the valve outside the foundation and the system emptied by the drain cock (C). The piping system should be liberally provided with shut-off valves (P). This is especially important for the branches, for if it is necessary to replace a washer in a leaky faucet,

it is most inconvenient to shut off the whole system. Ordinary pipe cannot escape rusting. Even before replacement is necessary such pipes often clog. The flow of water is obstructed and reduced. Particles of rust are detached and carried through faucets, not only making the water unpleasant for drinking purposes, but also staining fixtures and injuring fabrics in the laundry.

Plumbing pipes are concealed behind walls and under floors. To repair and then to replace rusted pipes, the walls and floors must be torn away. The home-builder or home-buyer seeking advice about a wall in the Olympic hotel, where the sessions are to be held. Color-coded flood lights will be installed, so as to bring out the intricate arrangement and interesting little details about the map.

GIGANTIC RELIEF MAY CONVENTION FEATURE

BIG COLLECTION AT SEATTLE TO BE SHOWN SOON

Trade Routes to All World Ports Will Be Illuminated by BRIGHT LIGHTS

SEATTLE, May 23. — Chief among a varied collection of maps, globes and model ships to be used in connection with the Twelfth Annual National Foreign Trade

convention in Seattle June 24-26 will be a gigantic relief map of the world, valued at approximately \$100,000 and said to be the greatest thing of its kind in existence. William Pigott, general chairman of the convention committee, stated last night.

Built of cast aluminum in place of the usual paper mache, the map is forty feet long and seventeen feet high. Since it is too large to be seen to advantage when laid out flat, convention officials have arranged to have it placed against

Fire-Safe Roofs Are Best Insurance

MORE than 20 per cent of dwelling house fires are caused by combustible roof coverings, according to underwriters' statistics. This loss could be entirely eliminated by using concrete roofing tile, which is modern

produced in standard sizes of 9 3/16 inches by 14 1/2 inches (overall), 150 lbs being required per square of 100 feet. Their weight is approximately 5 1/2 pounds each. They are usually furnished with double side lock for exclusion of water and wind.

Construction details of a concrete tile roof are shown in the accompanying drawing. The supporting rafters should be not less than 3 by 6 inches, spaced 30 inches apart, center to center, connected with collar or tie beams to prevent spreading and covered with 1-inch seasoned sheathing, closely laid and firmly nailed.

Advance preparations of flashing and sheet metal work permits faster progress and better work in laying the tile.



HOW TO BUILD COMFORT INTO A FRAME HOUSE

Use Celotex, an insulating lumber, in construction of the outer walls—costs practically same as wood, saves fuel bills. It is just like having an outer wall of "Cork" around your house.

Let us show you how to use Celotex for profit in Home Building.

Oregon Gravel Co. Hood at Front St.

CHAIN STORE LEASES PRESENT LIBERTY SHOW

Theatre Will Be Remodeled Prior to July 1

Cosmopolitan System Opening Branch in Salem; Line Is Popular One

Remodeling of the Liberty theatre to suit the demands of one of a chain of Cosmopolitan stores, to be ready for occupancy by July 1, was announced this week after negotiations were completed between Clarke H. Day, representative of the store, and George H. Guthrie, theatre operator, who is building a new show house on High street.

The Cosmopolitan stores handle a wide variety of merchandise, including staple groceries and a general line of goods ranging from 5 cents to one dollar. Stores are operated in Eugene, McMinnville and other cities in western Oregon.

The new Guthrie theatre, which has not been named, will face the new Salem hotel. Demolition of the present frame buildings on the property is under way.

Dead Pets Preserved For Sorrowing Owners

LOS ANGELES—Strange stories surround the pets which men and women bring into taxidermy studios. Here, often the sorrowing owners want their dead cat, dog or bird companions stuffed and mounted.

Recently a man came in with a parrot. He explained the manner in which he wanted it preserved. "I am having a little casket made," he added, "and it is to be placed there. We were pals for 19 years." He told how he and the bird had travelled over Europe together.

Weeplingly a woman brought in a canary to be mounted and put in a glass case. "The little thing has slept with me, eaten with me and been my greatest comfort for years," she told the proprietor. Another customer, wishing to retain a life-like pose of his pedigree English bull dog, killed in an automobile accident, had the skin of his pet mounted in a sleeping pose.

A college chap had his brindle bull dog preserved. This dog was called "Smoky" and, according to its owner, could smoke tobacco drink strong liquor.

Horses Wear Snow Shoes to Cross Rocky Mountains

MISSOULA, Mont. — Weather conditions in some parts of northern Montana, particularly in the mountain sections, make it necessary at times to resort to rather unusual efforts to circumvent nature's handicaps.

An instance is the reported plan of G. S. Hinkle, superintendent of construction work on the Lolo pass road project, on the border between Montana and Idaho where the highway crosses the Rocky mountains.

With snow still two and a half feet deep and the beginning of the season's construction opera-

REPORT SEVERAL SALES

CHILDS & BECHTEL FIND CITY PROPERTY MOVING

Childs & Bechtel, local real estate dealers, announce the sale of a 10-acre tract of land in the Salem Heights district from E. E. Bassett, to F. O. Breckenridge, an employe of the state accident commission. A total of \$5,500 was involved in the transaction.

The sale of a three-fourths acre tract in the same district was announced to Mr. and Mrs. Minnie Meyer, who recently came to the Willamette valley.

O. S. Boston has sold a dwelling to J. R. Boyles at 1025 Shipping street for a consideration of \$2,500; a sale to J. E. Studebaker, who recently moved here from Idaho to 1350 Morris street, and a sale from F. E. Siemens to E. F. Welser at 205 South Twenty-third.

Dole System Described As Crime Against Society

LONDON.—Young men should be taken out of the city settlements, transferred to the country and taught how to work as they were taught during the war how to fight, George Landsbury, newspaper editor and socialist member of parliament, told the House of Commons during a debate on what he described as "the wretched, miserable dole system" of the state, and its effects on young men between the ages of 18 and 25.

"I would stop giving these young men a farthing for doing nothing," Mr. Landsbury asserted "and unless they were prepared to earn money in the country or somewhere under decent conditions, they could do without things to eat, so far as I am concerned. The government is ruining the characters of tens of thousands of our young people, and any state of society that trains people to believe they should live by doing no work is committing a crime against the individual and against society."

According to figures presented to the house by T. Thompson, a liberal member, \$1,505,000,000 has been paid out by the government since the armistice in unemployment benefits.

A city of beautiful streets and well-kept lawns. Salem, Oregon.

The linen mills will mean fortunes to Salem people. The wise investor knows this, and invests accordingly.

REPORT SEVERAL SALES

CHILDS & BECHTEL FIND CITY PROPERTY MOVING

Childs & Bechtel, local real estate dealers, announce the sale of a 10-acre tract of land in the Salem Heights district from E. E. Bassett, to F. O. Breckenridge, an employe of the state accident commission. A total of \$5,500 was involved in the transaction.

The sale of a three-fourths acre tract in the same district was announced to Mr. and Mrs. Minnie Meyer, who recently came to the Willamette valley.

O. S. Boston has sold a dwelling to J. R. Boyles at 1025 Shipping street for a consideration of \$2,500; a sale to J. E. Studebaker, who recently moved here from Idaho to 1350 Morris street, and a sale from F. E. Siemens to E. F. Welser at 205 South Twenty-third.

Dole System Described As Crime Against Society

LONDON.—Young men should be taken out of the city settlements, transferred to the country and taught how to work as they were taught during the war how to fight, George Landsbury, newspaper editor and socialist member of parliament, told the House of Commons during a debate on what he described as "the wretched, miserable dole system" of the state, and its effects on young men between the ages of 18 and 25.

"I would stop giving these young men a farthing for doing nothing," Mr. Landsbury asserted "and unless they were prepared to earn money in the country or somewhere under decent conditions, they could do without things to eat, so far as I am concerned. The government is ruining the characters of tens of thousands of our young people, and any state of society that trains people to believe they should live by doing no work is committing a crime against the individual and against society."

According to figures presented to the house by T. Thompson, a liberal member, \$1,505,000,000 has been paid out by the government since the armistice in unemployment benefits.

A city of beautiful streets and well-kept lawns. Salem, Oregon.

The linen mills will mean fortunes to Salem people. The wise investor knows this, and invests accordingly.

A city of beautiful streets and well-kept lawns. Salem, Oregon.

The linen mills will mean fortunes to Salem people. The wise investor knows this, and invests accordingly.

REPORT SEVERAL SALES

CHILDS & BECHTEL FIND CITY PROPERTY MOVING

Childs & Bechtel, local real estate dealers, announce the sale of a 10-acre tract of land in the Salem Heights district from E. E. Bassett, to F. O. Breckenridge, an employe of the state accident commission. A total of \$5,500 was involved in the transaction.

The sale of a three-fourths acre tract in the same district was announced to Mr. and Mrs. Minnie Meyer, who recently came to the Willamette valley.

O. S. Boston has sold a dwelling to J. R. Boyles at 1025 Shipping street for a consideration of \$2,500; a sale to J. E. Studebaker, who recently moved here from Idaho to 1350 Morris street, and a sale from F. E. Siemens to E. F. Welser at 205 South Twenty-third.

Dole System Described As Crime Against Society

LONDON.—Young men should be taken out of the city settlements, transferred to the country and taught how to work as they were taught during the war how to fight, George Landsbury, newspaper editor and socialist member of parliament, told the House of Commons during a debate on what he described as "the wretched, miserable dole system" of the state, and its effects on young men between the ages of 18 and 25.

"I would stop giving these young men a farthing for doing nothing," Mr. Landsbury asserted "and unless they were prepared to earn money in the country or somewhere under decent conditions, they could do without things to eat, so far as I am concerned. The government is ruining the characters of tens of thousands of our young people, and any state of society that trains people to believe they should live by doing no work is committing a crime against the individual and against society."

According to figures presented to the house by T. Thompson, a liberal member, \$1,505,000,000 has been paid out by the government since the armistice in unemployment benefits.

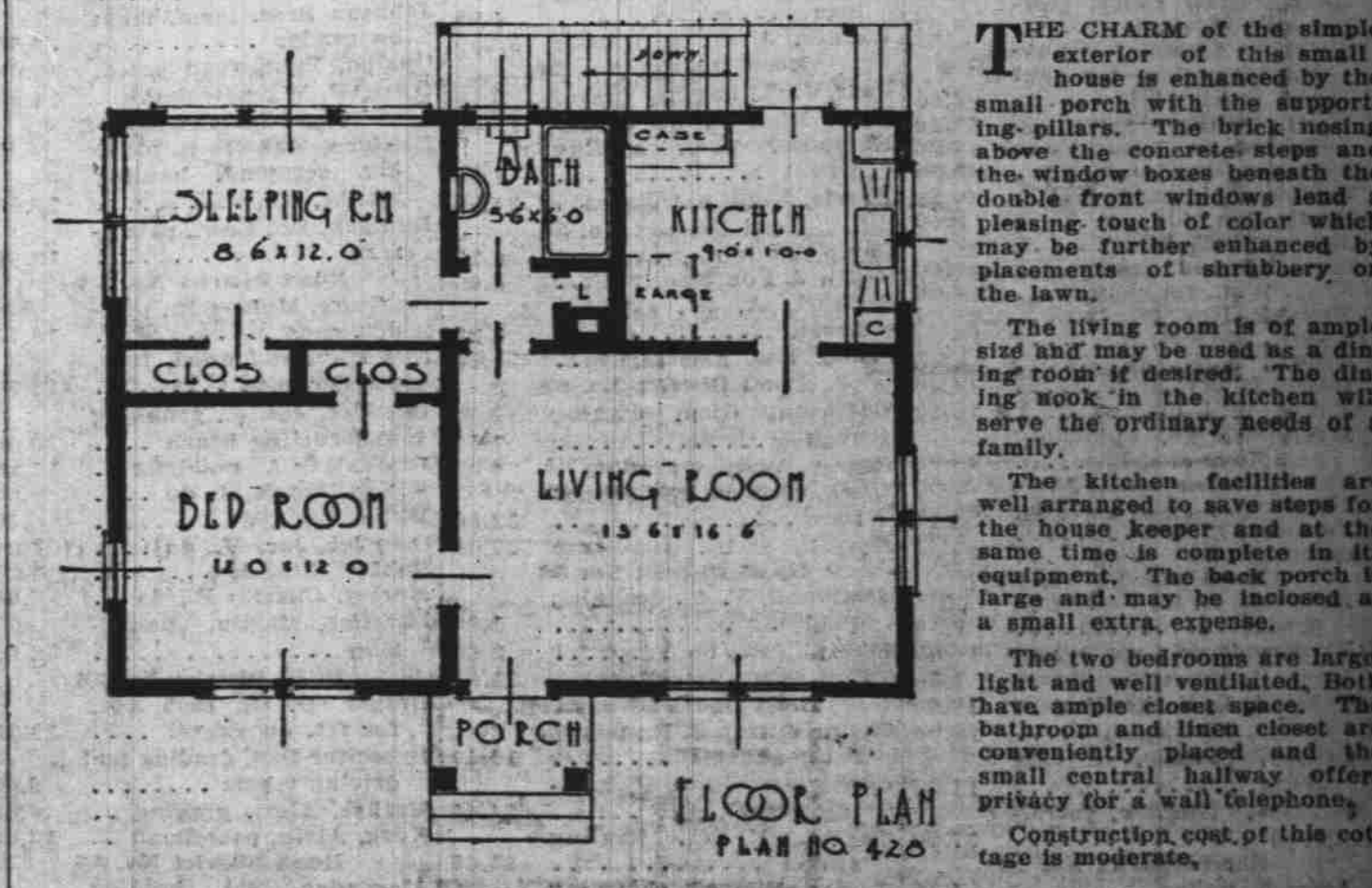
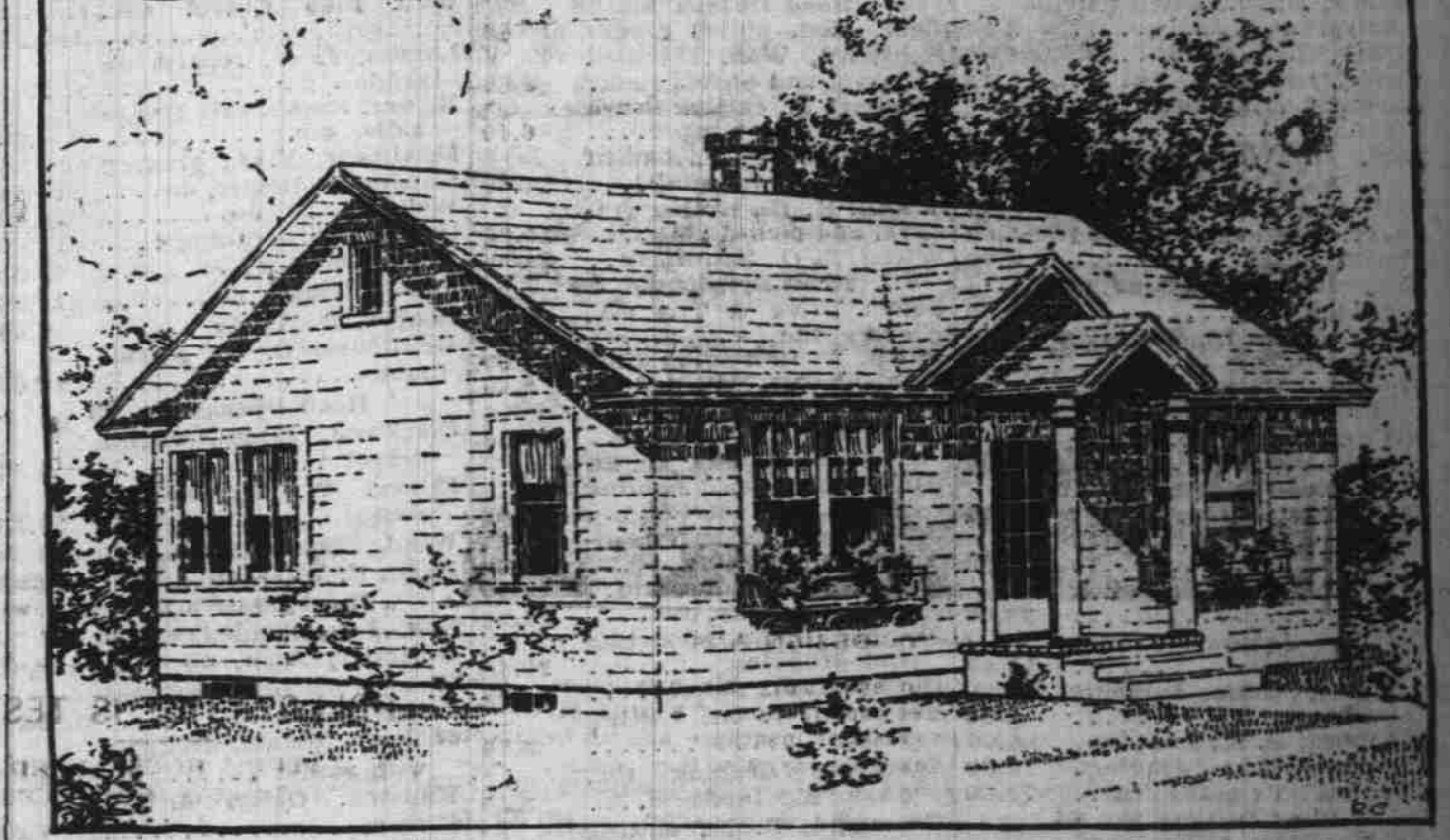
A city of beautiful streets and well-kept lawns. Salem, Oregon.

The linen mills will mean fortunes to Salem people. The wise investor knows this, and invests accordingly.

A city of beautiful streets and well-kept lawns. Salem, Oregon.

The linen mills will mean fortunes to Salem people. The wise investor knows this, and invests accordingly.

Distinctive Cottage for Small Family



Two sets of blue prints and specifications for the above house or other houses will be supplied at nominal cost upon application to

SPAULDING LOGGING CO. SALEM, OREGON

Spaulding Lumber makes better homes!

Good woodwork pays—in satisfaction to the homeowner and in the resale value of the house. Our interior trim, ready made fixtures, and built-ins, with their accurate fitting and fine workmanship will add new beauties and comfort to the home.

Order Screens Now!

With our large organization and branch yards, we can assure fullest value for your money, low transportation costs and prompt deliveries.

Before you build or make alterations, consult with our nearest office—you will be time and money ahead.

CHAS. K. SPAULDING LOGGING CO.
Newburg Woodburn Douglas Fir Lumber McMinnville
Salem
General Office: 300 North Commercial National Bank Building

THE CHARM of the simple exterior of this small house is enhanced by the small porch with the supporting pillars. The brick masonry above the concrete steps and the window boxes beneath the double front windows lend a pleasing touch of color which may be further enhanced by placements of shrubbery on the lawn.

The living room is of ample size and may be used as a dining room if desired. The dining nook in the kitchen will serve the ordinary needs of a family.

The kitchen facilities are well arranged to save steps for the house keeper and at the same time is complete in its equipment. The back porch is large and may be inclosed at a small extra expense.

The two bedrooms are large, light and well ventilated. Both have ample closet space. The bathroom and linen closet are conveniently placed and the small central hallway offers privacy for a wall telephone.

Construction cost of this cottage is moderate.