

# OWN YOUR HOME

## POWER COMPANY SPENDING MONEY

Approximately \$170,000 for Improvements Come to Salem District

Approximately \$170,000 of the cash requirements of the Portland Electric Power company for use in improvements, extensions and betterments in its territory for the current year will come to Salem, it is declared. The total cash requirements for the company are announced as \$3,000,000. The construction of a high-tension transmission line from Oregon City to Salem, via Newberg will entail an expenditure of \$150,000, while \$15,000 will be spent to install a current station in West Salem, and \$5,000 for the improvement of the local station in this city, it was announced.

Fully \$2,000,000 is being spent by the company for the construction of overhead and underground conductors for power. Practically every part of the Willamette valley is affected. This is one of the largest appropriations this company has made in years, particularly in view of the fact that it does not include any noteworthy new construction items, but these vast sums are to be devoted almost entirely for the improving service facilities for the over communities served.

## WILL MOORE TO ATTEND SESSION

State Insurance Commissioner Will Be in Texas Late This Summer

Will Moore, state insurance commissioner, will accept the invitation extended by the National convention of insurance commissioners to the meeting to be held at San Antonio, Texas September 14 to 19.

A number of very important problems will come up before the insurance commissioners in session and one of the points in question will be presented by the actual board of fire underwriters which they hope to have adopted through out the United States. (The Uniform Rating Law.) This is similar to a bill which was read in the house of representatives during the last legislature and killed in the committee.

It would empower the insurance commissioner upon written complaint that unfair discrimination in rates existed in the same territorial classifications between risks and the application of like charges on credit or discrimination between risks of essentially the same hazards and having substantially the same degree of protection against fire, order a hearing for the purpose of determining such cause of discrimination and the review of such question and the rates complained of before the said commissioner of insurance, shall be had only after 15 days notice to all parties interested and if upon such hearing the commissioner of insurance shall determine that the rate complained of is unfairly discriminatory, he shall have power to order the unfair discrimination removed and a rate substituted by the rating bureau or insurer which is so discriminatory.

Any such order of the commissioner of insurance shall be subject to review by any court of competent jurisdiction for the purpose of reviewing such order and such cause shall be duly set for hearing and proceed as other causes on motion of any party interested. If such motion is made within 15 days from the issuance of such order and notice thereof. During the pendency of such review, the order which shall be suspended and in the event of final determination against any insurer any over charge during pendency of such protection shall on demand

## Secretary Davis and Housing Expert Bespeak Better Homes in America; Demonstration Week-- May 11 to 17



The Better Homes in America movement seeks to help every American family to raise its standard of housing and of home and home life and to develop the highest spiritual values of the home. While the movement is entirely non-commercial and not directly a house building organization, one of its aims is to encourage home ownership.

James J. Davis, Secretary of Labor and a member of the Advisory Council of Better Homes in America, states his views in this way: "Nothing that we can do to provide more and better homes in America will be ill-done. For the home is the basis of our whole civilization, of our whole American social and political system. Better conditions in the home make for better citizenship, and through surrounding our rising generations with true home life and fostering

the family spirit we will provide better citizens for the future. Better homes mean a better people. Better people means a better government, and a more rapid advance in our civilization." Dr. John M. Gries, chief of the Division of Building and Housing of the Department of Commerce, and a member of both the Board of Directors and the Advisory Council of Better Homes in America, speaking of the physical housing standards which should be observed, says: "Fortunately the majority of American houses meet reasonable standards of shelter from the elements, privacy, space, light, ventilation and heating. There are still millions of them, however, which do not have plumbing or good artificial or natural light, which are overcrowded, and which expose their occupants cruelly to extremes of cold or heat. The houses in-

cluded for one or more reasons in the deficient group stand as a challenge, not only to the families living in them, but to the communities in which they are situated, and to the entire nation. "In a still larger group of homes, health and character suffer to a certain extent, and home life falls of its finest fruition because the families in them do not make the best of what they have. Plain living and high thinking is an excellent motto, but its author does not forget that maintaining a good standard of plain living is a task that calls for a goodly share of our best brains and energy."

The national headquarters of Better Homes in America, at Washington, D. C., report that over 1500 communities are organized to observe Better Homes Week, May 11-17, 1925.

be refunded by the insurer to the persons entitled thereto.

The national board of fire underwriters will further propose to the insurance commissioners that the commissioner of insurance shall have power to examine any rating bureau as often as he deems it expedient to do so and a report of such examination shall be filed in the insurance department.

## Looking Down From Aloft Birdmen Evolve News Maps

WASHINGTON—Aviation has developed as one of its by-products an entirely new science, the making of topographic maps for the use of those who wing their way through the air. The prosaic, everyday map of geographic memory is unsuited to accurate aerial navigation. The army air service has evolved experimental air maps, in strips, with the aid of the topographic branch of the geological survey. When a pilot takes off he

is handed a strip map of the territory he will cover, 100 miles wide.

Besides the emergency landing fields, this map shows the form of a city as it appears from the air; depicts the improved roads; records the altitude of the land in various colors so the birdman may steer a course consistent with the height of the terrain over which he flies. All bodies of water are shown, as are curves of railroads, with particular attention paid to where they cross roads, and at what point of the compass they enter a community.

Before this type of map was evolved the pilot took an ordinary map, drew a straight line in red ink on it, and followed this to his destination as his ability permitted. The new maps make for increased speed in flying a direct course.

Strip maps have now been com-

pleted along the army's model airway system, running from New York to Belleville, Ill., and southward to San Antonio, Texas. Southern New England to Boston is mapped in this manner, as is the southwestern border to San Diego, Cal. Parts of the south are mapped and strip maps have been completed across country from New York to Chicago.

## Kennedy's Paint Shop 261 Court Street, Salem, Oregon



Vitrinite Enamels  
Ripolin Enamels  
Murotic Enamels  
Barwell Sun Light Enamels  
Pratt & Lambert Varnishes  
Murphy Varnishes  
Benjamin Moore Wall Finish  
Efecto and Dakote Auto Enamels  
Old English Floor Wax  
Cal-O-Tint Calcimine  
Varnish Stains  
Wall Paper  
Brushes

Ask Any Experienced Painter

## Lone Star Service Station and Camp Ground



1998 N. Capitol Street  
**John Williamson**  
Prop.  
Also  
**Builder of Homes**  
for sale on easy terms.  
If you are looking for a home call on us.



**a kitchen corner**  
Just such a pleasant breakfast nook as this can be enjoyed in any house, old or new, with  
**DEERLESS**  
Built-in Furniture

Cupboards, wall table, wall seats, all separate units, yet combined into many different nooks. Before you build or remodel ask for "The Book of Built-in Furniture." Call and see our exhibit.

**GABRIEL**  
Powder and Supply Co.  
178 South Commercial  
Phone 728

## 86TH DWELLING BUILT BY ENGLE

Contractor Erects Many Homes in Last Two and One-Half Years

Adam Engle, local contractor is starting on the construction of his 86th dwelling in Salem, during the two and one-half years that he has been in this city, according to a review of building records on file with the city recorder.

At present he has 16 buildings under construction in the various parts of the city, having an aggregate value of \$60,000. The average cost of each dwelling is about \$3500, a moderate priced home, designed especially for the wage earners and the professional class of people.

In the building which has been constructed, the latest ideas in dwelling construction have been carried out and the price of construction kept down to a minimum it is declared.

## PORTLAND READY FOR BIG FESTIVAL

Annual Event Will Offer Several New and Fine Features This Year

PORTLAND, Or., May 9.—Four weeks from Monday will see the opening of Portland's 1925 five-day Rose festival, declared to be the most elaborate civic celebration any city ever has planned. Portland's Rose festival has endured a score of years while other civic celebrations have flared and died, yet Rose festivals of previous years are belittled by comparison with the program announced for June 15 to 19.

Two distinctive new features, one of which is of greater magnitude than all of the features of any previous rose festival and the other equal in elaboration to the famous floral parade, are included in the program. The first is "Rosaria," a civic pageant in which have been enrolled the 5,000 most talented singers, dancers and actors in the city, including virtually all the professionals. Charles Wakefield Cadman, fa-

mous composer, has written the music on a rose theme. The libretto is by Doris Smith, Montgomery Lynch, noted producer of "The Wayfarer" and other pageants, is director general.

Merrykhana is the other big attraction. This parade will reflect the carnival spirit of the nations of the world in visual contrast to a funfest of Americans. Thirty-seven nationalities will be represented in "The March of the Nations." Other sections of the parade will be for "Punnyads," advertising floats with laughs in them, for booster organizations, fraternal groups, industrial organizations and theaters. A "Razzberry" section is planned in keeping with the "smile in every entry" rule.

It is estimated that 25,000 Portlanders now are putting in all or part of every day in preparation for the 1925 festival.

## CITY PLANNING 14 .. BUILDES

A special committee on city planning, or the building board has been appointed by Mayor J. B. Giesy to consider the regulations of building activities in the city.

Many complaints have been coming in about the kinds of building that have been erected in several parts of the residence district and as a result the committee was appointed.

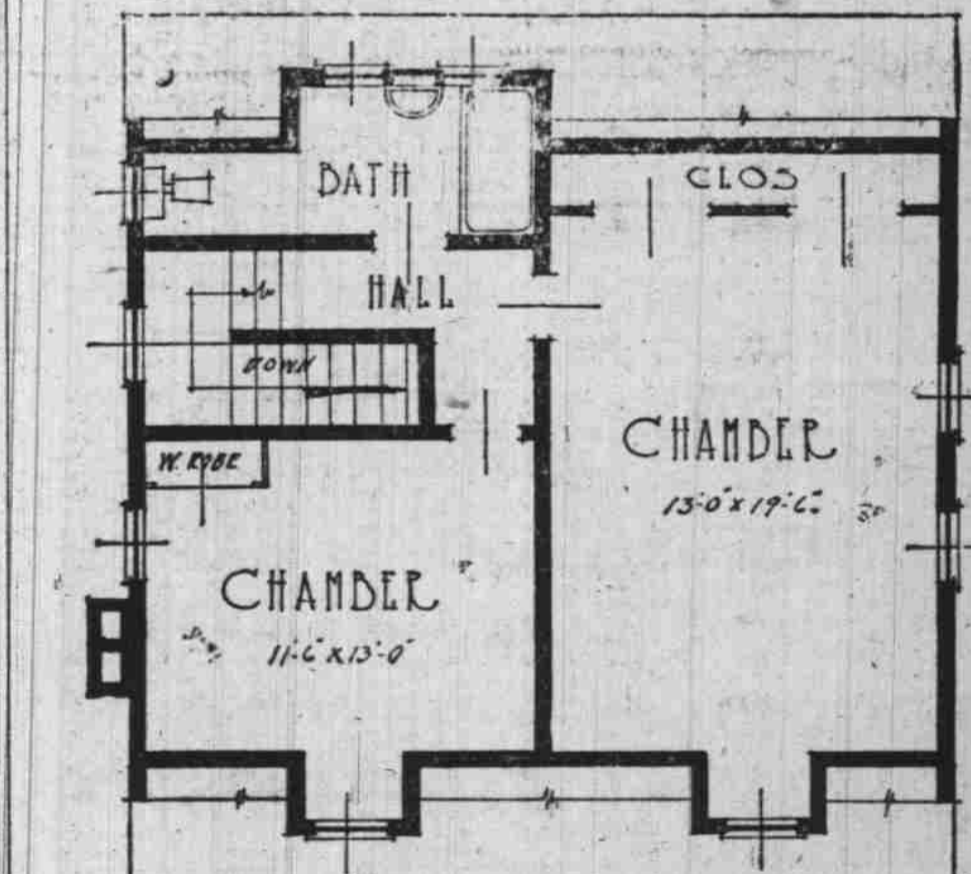
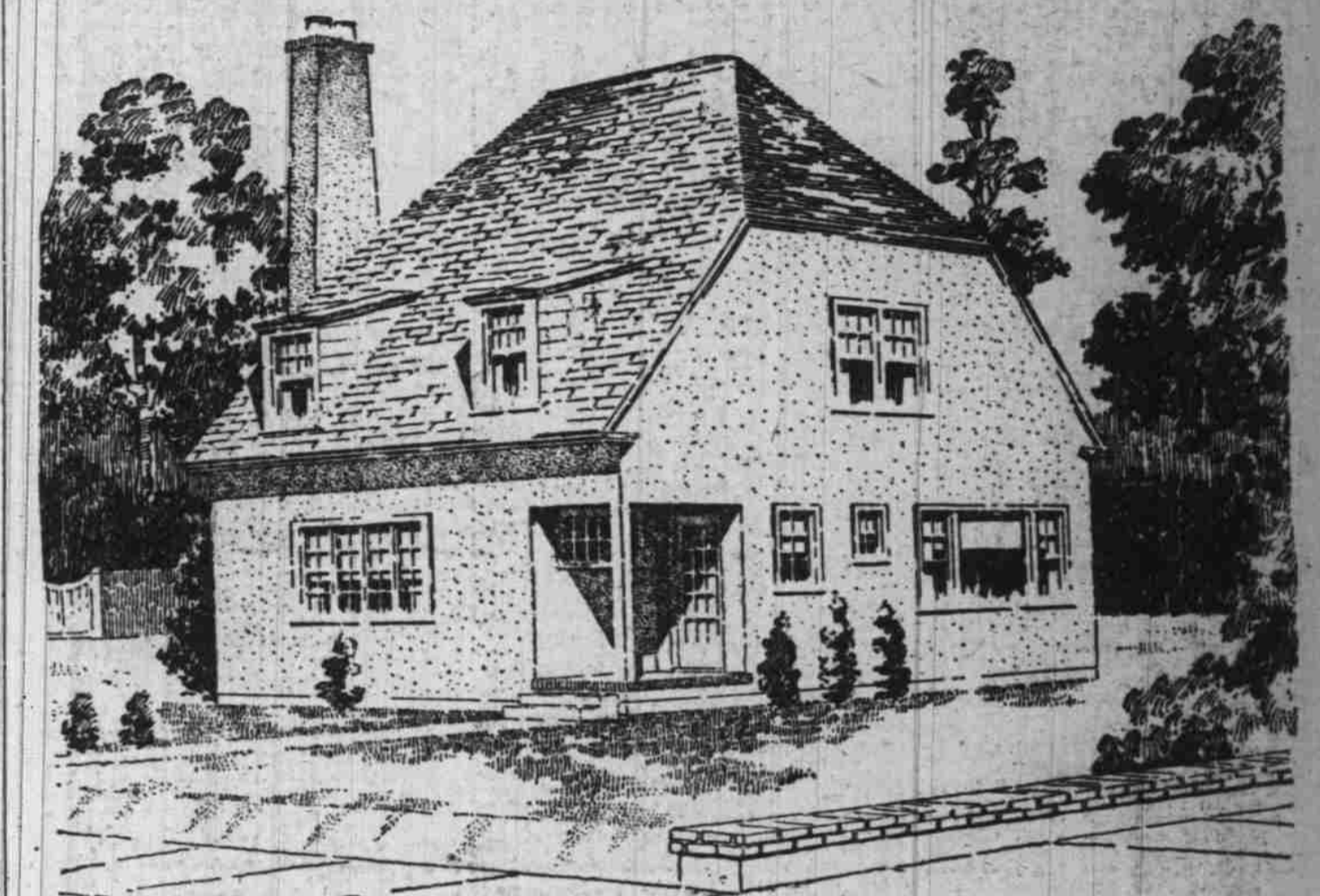
The councilmen appointed were W. H. Dancy, chairman; L. J. Simeral, S. E. Purvine, Paul Johnson and C. O. Engstrom.

## Noted Arlington Flagstaff Will be Given New Home

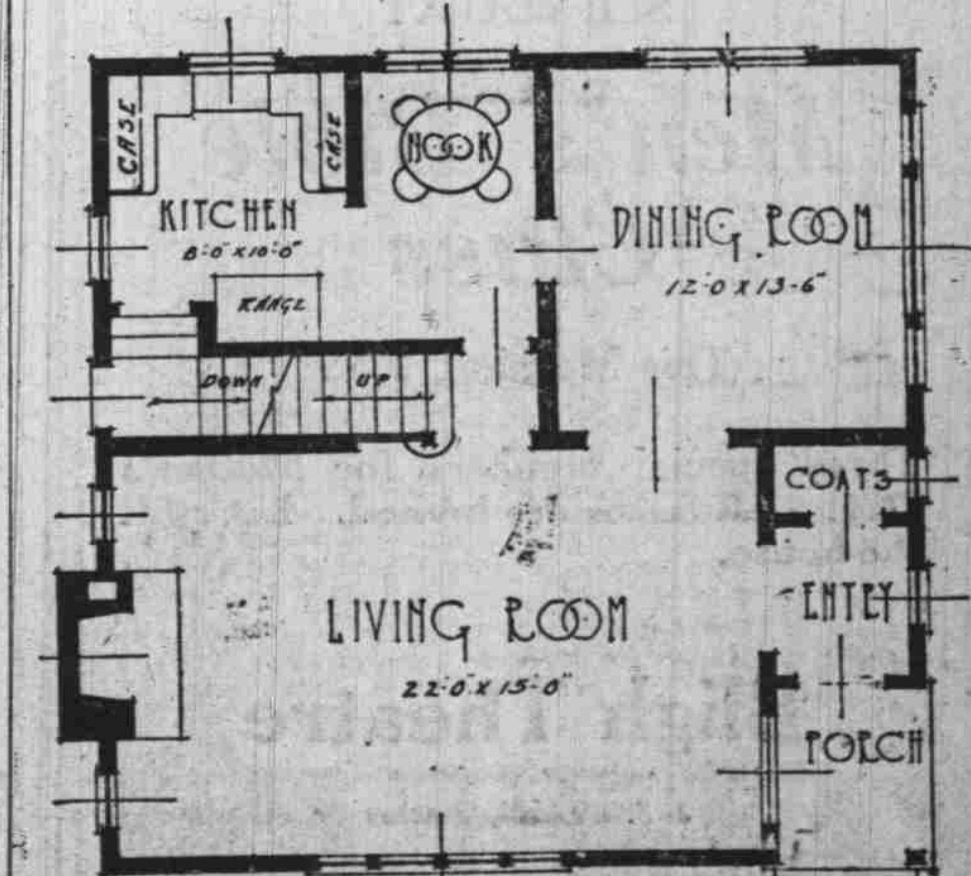
WASHINGTON—The Great flagstaff that has topped the heights of Arlington, in front of the Custis-Lee mansion, ever since the national cemetery was established shortly after the Civil War, is to fall before the modern-day conception of harmonious landscape.

The National Fine Arts commission has ruled that the 100-foot shaft doesn't blend with the beauty of the natural surroundings of the cemetery, and the war department is contracting for its removal. It will be preserved, however, by re-erecting it on the Fort Myer reservation a mile or so away.

## ENGLISH TYPE HOUSE FINDS FAVOR



SECOND FLOOR PLAN



FIRST FLOOR PLAN PLAN NO 553

THE ENGLISH type house shares equal favor with Colonial designs among Portland homebuilders and is gaining steadily in popularity not only because of its pleasing exterior, but because of its adaptability to local climatic conditions. The narrow cornice, steep roofs and flash dormers are typical of the English design.

The small entry, with adjoining coat closet serves all purposes of convenience. The living room is spacious and affords plenty of wall space for furniture placement. The stairway to the second story is planned to occupy a minimum of cubic footage and also affords an easy grade entrance to the basement.

The kitchen and breakfast nook are exceptionally light and airy and are in direct connection with all parts of the house.

The second story contains two good sized bed rooms, each with ample closet space.

The design will appeal to the person owning a site located among less attractive homes, as it is of good height and its pleasing appearance will make it one of the show places of the neighborhood.

The plan calls for 840 square feet of floor area. Two sets of blueprints and specifications of this and other homes will be furnished at nominal cost.

Two sets of blue prints and specifications for the above house or other houses will be supplied at nominal cost upon application to

**SPAULDING LOGGING CO.**  
SALEM, OREGON

## Make Your Home Beautiful and Comfortable

With Awnings  
Old Awnings Repaired and Put Up  
For Samples and Prices Call

**Salem Tent & Awning Co.**

Manufacturers of  
Tents, Awnings and Canvas Goods  
of All Descriptions  
FRANK MONNER  
728 North Liberty Street  
Salem, Oregon Phone 418

## Order Flower Boxes now

THERE is still time to start some flowers. If you have a broken down box that needs replacing or a bare spot about the house that would be brightened by a few flowers, get one of our attractive window or porch boxes or flower stands.

It's cheaper to buy them!

At \$1.25 and up, you can't afford to buy lumber and spend the time making one. And the chances are you will prefer one of ours when you see how nicely finished they are!

Don't wait! Do it NOW!

**CHAS. K. SPAULDING LOGGING CO.**  
Newberg Douglas Fir Lumber Tillamook  
Woodburn Salem Independence  
GENERAL OFFICE: 200 Washington National Bldg., Portland, Ore.