

OWN YOUR HOME

WEEKLY BUILDING PERMITS HEAVY

Thirteen Issued Representing \$77,100; Apartment House to Rise

Thirteen building permits aggregating \$77,100 were issued from the office of the city recorder during the week ending Saturday noon. With one exception all were for new dwellings.

The main permit was issued to O. L. Fisher for a three-story apartment house at the corner of Oak and South Commercial, excavation for the basement having begun last week. The apartment house will cost \$45,000.

April permits for 1925 were under those of 1924, due chiefly to the issuance of one permit last year for the construction of the Parrish junior high school at a cost of \$168,000. There were 50 permits issued this year, aggregating \$268,875 against 54 permits for April 1924 with a total of \$365,300.

New dwellings last year exceeded those this year in numbers and value, being 34 totaling \$107,425 against 38 for \$154,700. A permit was issued this year for a concrete store, \$22,000; a warehouse, 5,000 and a service sta-

tion for \$7,000. Last year in addition to the high school building, permits were issued for the Unitarian church, \$25,000 and a concrete store building, \$8500.

Bids For New Salem YMCA Will Be Opened Wednesday

Bids for the new YMCA building will be opened on Wednesday May 6 and the contract will probably be awarded at the board meeting the following day.

Four Salem firms and several out of town contractors are bidding on the construction of the building, which is to be completed and ready for use before the first of next year.

James Kappahan, who has the contract for digging the basement for the new building will finish the work within a few days and will have everything ready for the contractors to start the actual building operations.

Old Rigdon Mortuary Is Now Being Demolished

Work of destroying the old frame building formerly occupied by the Rigdon Mortuary on High between Court and Chemeketa, was begun a few days ago. The property was purchased by the Valley Motor company and a modern brick building will take its place. The exterior will be designed to conform with the front of the motor plant's quarters.

RURAL DISTRICTS USE MORE POWER

Farmers Obtain Electrical Service As Aid to Everyday Farm Work

In spite of the fact that only about two and one-half per cent of the farms of the country have electric service, electricity is already supplying more farm power than is supplied by gasoline engines, according to figures gathered by the United States department of agriculture.

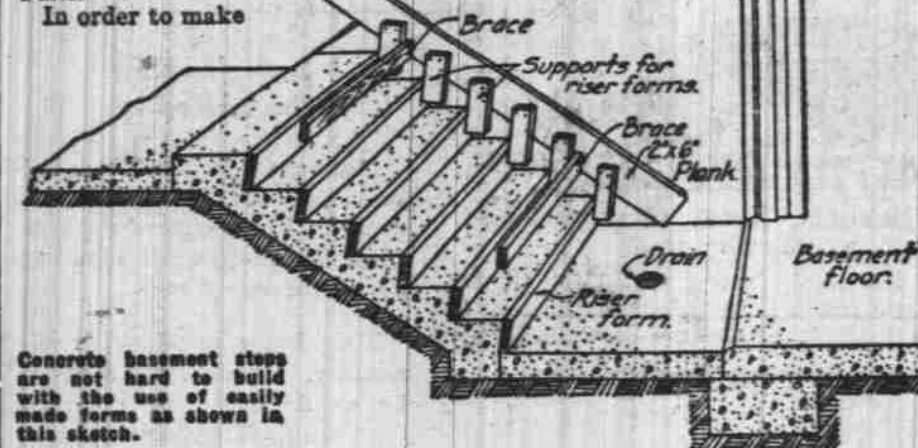
The total electrical power installation on farms is now approximately 35,000,000 horsepower; whereas the gasoline engines, exclusive of tractors, total about 32,500,000 horsepower.

It is estimated that 167,000 farms now receive electrical service from central station lines, and that a similar number have individual generating plants.

A national farm survey, now being completed by the department of agriculture, is assembling all available data on the use and source of electric power on farms, and the effect upon acreage and

Basement Steps of Concrete Are Permanent and Safe

CONCRETE steps for the basement will not wear out, get loose, or become unsafe. Once constructed, there will be no annoying repairs necessary. They are not hard to build by the use of the easily made forms shown in the accompanying sketch. The space under ordinary stairs where trash and vermin accumulate is eliminated when concrete steps are built.



Concrete basement steps are not hard to build by the use of easily made forms as shown in this sketch.

In order to make wooden forms. Well seasoned, air dried lumber is best, as green lumber will shrink if not kept wet, thus opening cracks in the forms through which water-carrying cement will leak when the concrete is placed. The concrete should be dressed at least on one side and on the edge, because the boards will thus fit closer together and the planed surface next to the concrete will reduce the labor of removing and cleaning the boards. Placed lumber also will give a very regular and even surface finish. To prevent concrete from sticking to the forms, and to aid in their removal, use a mixture of kerosene, turpentine, and a little oil, or whitewash should be painted on the forms before placing the concrete.

After the forms are placed, earth should be filled in and thoroughly tamped so as to provide a firm base on which to place the concrete steps. A 1:2:4 mixture should be used, the treads being "floated" with a wooden float. The concrete in the steps should not be less than six inches thick.

RIVER FREIGHT LOADS ARE BIG

Forty Round Trips Made With 7000 Tons of Cargo; May Haul People

A total of 7,000 tons of freight was handled by the Salem transportation company during the last 90 days of operations, according to the announcement of F. W. Karr. During the operation of the Northwestern, 40 round trips have been made, which resulted in 1000 more tons of freight being sent down the river than was brought up.

Salem firms are backing the water transportation line in an endeavor to secure terminal rates on freight coming into the city and upon goods that are shipped out. Goods that have been shipped from California are set on the siding here, but the rates charged by the carriers are the same as if the car had been sent to Portland and returned.

It is expected that the operation of the boat will cause the interstate commerce commission to reduce the rates in order that a benefit to the city might result.

The Salem Transportation is using the Court street docks and warehouses, which were leased by the Inland Waters Transportation, which went defunct when their boat sank to the bottom of the river, and the insurance was not collected.

The use of the dock is asked by the new company for a period of five years, after which a nominal fee will be paid to the city for the use of the property.

From the indicated progress of the business here, Mr. Karr, is planning to put on another boat

to give daily service between Salem and Portland. Probably passengers will be carried, although details for this matter have not been arranged thoroughly. At present he is allowed to carry ten passengers to Portland without charge and he states that he is willing to take persons on the down trip.

City Properties Change Owners During Past Week

Winnie Pettyjohn, realtor, reports the sale of a home to Fred

Bradshaw, on 1185 Leslie. The transfer was made from Lane Morely for a consideration of \$1850. Edith Walton has secured a home from W. T. Thomas on 1758 Court for the consideration of \$2575. Marie D. Lewis has secured the Arvilla Conn property on North Church.

The man who wears a visage grim will find most people shunning him; While he whose face lights with a smile will have friends round him all the while.

Make Your Home An Investment

It's wise to set a reasonable limit of cost and plan to keep within it. That's where Spaulding's complete building service will help you to get utmost home value without sacrifice of permanence or quality.

Our service includes architectural plans, foundation and roofing material, lumber, interior trim, and built-in fixtures. Ask us to submit an estimate on the complete job. You'll be under no obligation.

CHAS. K. SPAULDING LOGGING CO.

Newberg Woodburn Douglas Fir Lumber Salem Independence

GENERAL OFFICE: 900 Northwestern National Bank Bldg., Portland, Ore.

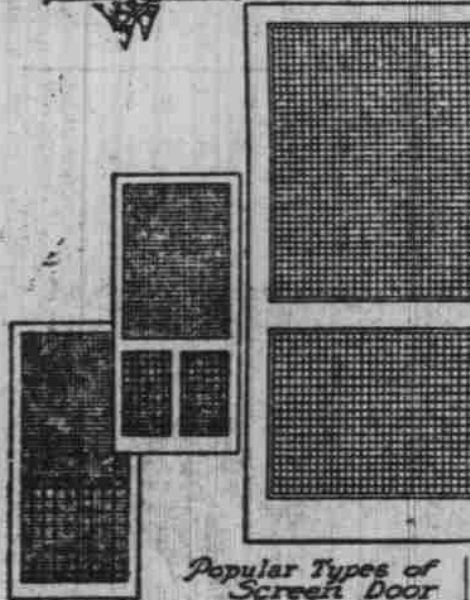
Timely Hints For The Home Buyer

Insect Screens Guard Health and Insure Comfort of Family

WILL the world of the future be dominated by insects or human beings? Philosophers are speculating while scientists are engaged in conflict with the boll weevil, the Japanese beetle, the Gypsy moth and other "blights." Even the old-fashioned potato bug is coming in for his share of attention. In the meantime, the average man is in combat with the malaria-bearing mosquito and the typhoid-spreading fly.



Openings That Should Be Screened.



Half Screen Type The Casement Type Top Hung Screen

Door and window screens are necessary in guarding health and comfort from the attacks of the usual swarms of spring and summer pests.

Before buying his screens, the householder should first determine the type of screen that will best suit his requirements. A type known as "half-screen" fits one-half of the window opening and may be either stationary or sliding. Screens of the casement design are either double or single frame and are hinged. They open outwards and can be swung back to leave the window opening entirely clear. An advantage in window cleaning. The "top hung" screen is hinged at the top and swings to leave the

window opening clear when desired, giving similar advantages to the casement screen.

The most important part of every screen, however, is the insect screen cloth for it is this part of the screen that bars the winged pests. The insect screen cloth adaptable for general use is usually 14, 16, or 18 mesh cloth. The figures denote the number of openings to each linear inch of screen cloth. The 14 mesh insect cloth will keep out flies and larger varieties of insects; 16 mesh cloth will keep out mosquitoes of all sizes and the smaller insects usually prevalent; 18 mesh is needed only in localities infested with midges, gnats and other very small insects.

Ordinary screens rust and neither paint nor metal coating will protect them long. Every rust-spot

eventually becomes an "open door" to flies and mosquitoes. For permanent protection, it is advisable to use screen cloth that does not rust, such as bronze or copper in set screen cloth. Non-rusting screens may be put up and taken down yearly with assurance that the screen cloth has no weak spots from rust to cause it to break in handling.

In the case of screen doors it will be found an advantage to have a heavy wire guard in the lower panel to protect them against kick and knocks.

In screening a home it is necessary to give attention to other openings besides the main door and windows. Cellar and attic windows, skylight vents and vent shafts are often overlooked but they, too, should also be screened.

crops of available power of various kinds. More primary power is now used in agriculture than in any other industry, with the exception of transportation, and it is estimated that the use of power, together with modern labor-saving equipment, has enabled the American farmer to produce three times as much per man as was produced with the hand methods of 1850. In this time the power available to each farm worker has increased from 1.5 horsepower to 4.6 horsepower.

The morning newspaper is the market place of the entire world. An advertisement in it will bring you larger returns.

YMCA BASEMENT WORK UNDER WAY

Ground Will Be Ready for Construction as Soon as Bids Opened

Within a few-days bids will be let on the construction of the new YMCA building on Court street, according to information released from YMCA officials. The plans have been completed and turned over to contractors, who are now busy getting up an estimate to be presented to the board of directors at their regular meeting. The plans were brought here by Kenneth Legge, who has been associated with George Whiteside, Portland architect.

Workmen are busy on the basement and the excavation will be completed within a few days. The sewer line has been completed and the grounds will be ready for actual construction as soon as the bids are opened and the contract signed.

Construction of the building will be completed within the next year, it is stated.

FURNACE For Your Home

Why Not Try An Eastman Sibloco

It's a Marion County product. Scientifically installed in your home by our own men, anywhere in the Salem district. Low in first cost. Users will tell you of its extreme economy in fuel consumption. Easy to control, and durable.

For information, Write or Phone EASTMAN BROS. Formerly Silvertown Blow Pipe Co. Silvertown, Ore.



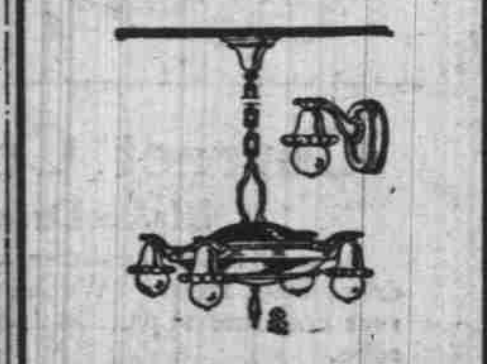
The proper shape Ironing board

Before you consider any particular built-in ironing board see the Peerless. Many special features. Highest quality built.

DEERLESS Built-in Furniture

Send For This The "Book of Built-in Furniture" is full of helpful ideas for planning a new home or remodeling an old one. It's yours free. Write or call for it.

GABRIEL Powder and Supply Co. 175 South Commercial Phone 728

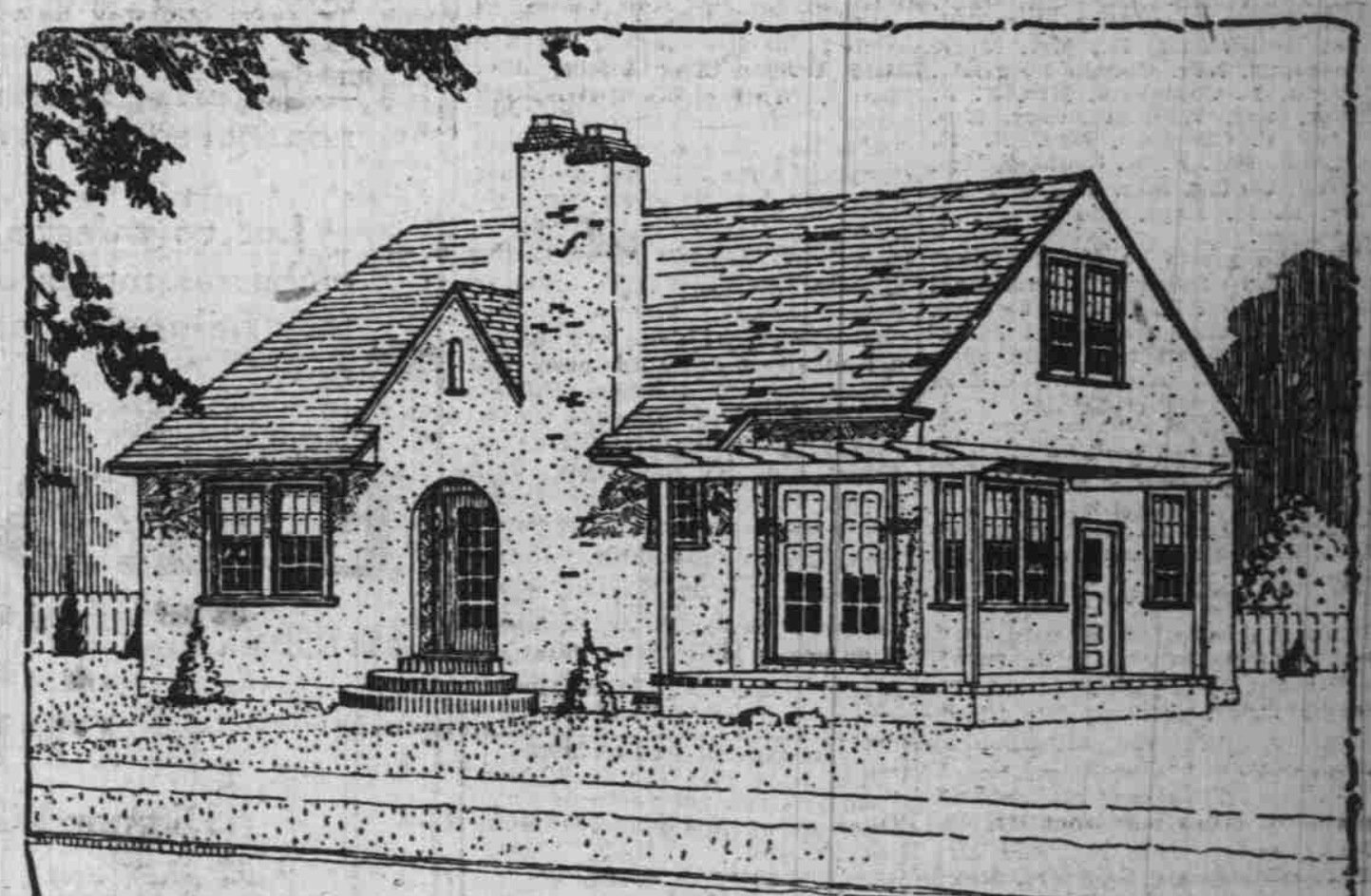


MODERN LIGHT FIXTURES

Your home isn't modern without the newest light fixtures. Come in and let us show you the very latest. Interestingly low prices for spring house-cleaners.

BROWNELL ELECTRIC CO. 307 STATE PHONE 953

SNAPPY FIVE-ROOM ENGLISH HOME



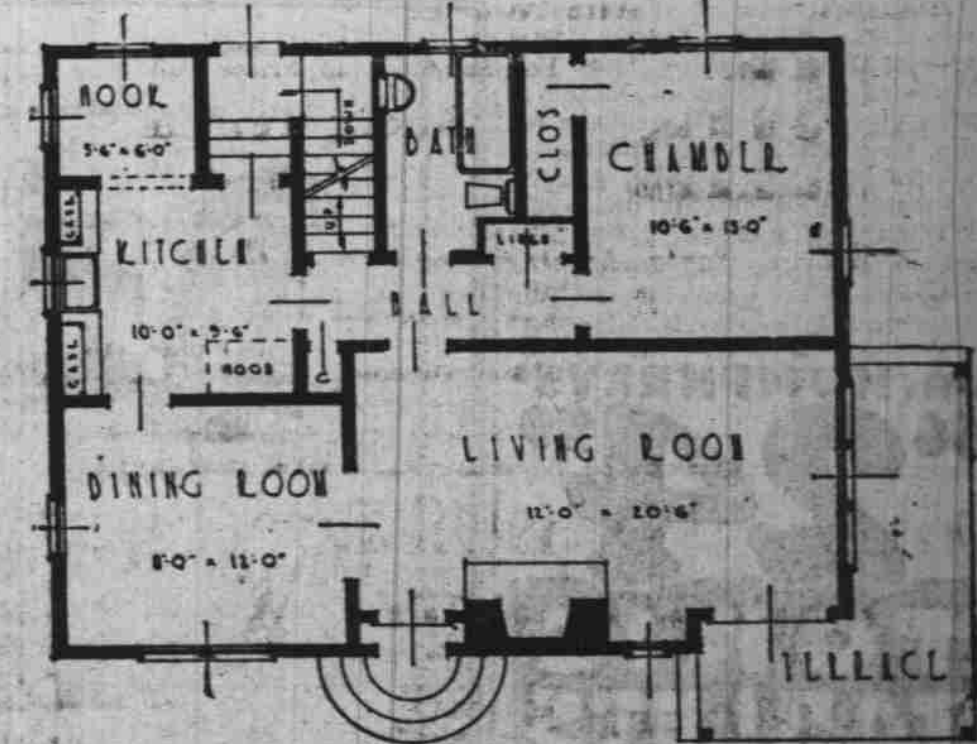
MUCH has been said about the adaptability and practicability of the five-room house. Some are in favor and some are against it; but to prove that it is a solid and popular home we are publishing one to-day.

The exterior design is of stucco and shingles. This will allow it to fit into any landscape scene and at the same time give the impression of HOME.

Being influenced by the English type house it has not the characteristic squareness of the rooms out has taken on an indefinable spirit of charm. One will notice the bath room is down stairs and in the handiest place as it can be reached from the service quarters without going thru the living room. The bed room is large and airy and has a good closet.

The kitchen is well located and has a nook of sufficient size to seat four people. The stairs to the full cement basement lead from the kitchen via a grade door.

The dining room is not on center with the rest of the rooms and this in itself breaks the monotony of a square sur-



face. The living and dining room can be made into one by simply opening the French doors between. Around the corner of the living room there is a terrace, this with the fireplace location tend to make this an enticing room. With a careful consideration in future and decoration this house can be made the show place of any town.

Two sets of blue prints and specifications for the above house or other houses will be supplied at nominal cost upon application to

SPAULDING LOGGING CO. SALEM, OREGON

Are You Going to Kalsomine? If So, Read this

We handle the best Kalsomine on the Market made by Sherwin Williams Co. It is called Decontint, we have it in all shades.

This week only we will make a special price of 8 cents per pound on the following colors—White, Ivory, Cream, French Gray, Light Tan, Medium Cream.

It is Manufactured from select material, scientifically compounded in dry Powder form, so that it only requires mixing with ordinary cold water to prepare it for immediate use. It is an ideal wall coating for decorating of all interiors. Can be applied on plaster, wood or wall board.

We also handle paints, oils and varnishes, all kinds of brushes, in fact "everything in building material." We will be pleased to have our Mr. Perry call on you and give you an estimate of what you will need.

NOTE: We have a few thousand feet of 1x3 T. & G. flooring which we will close out at \$16.00 per thousand. Come and see it.

COBBS & MITCHELL CO.

A. B. KELSEY, Manager 349 South Twelfth St., near Thos. Kay Woolen Mill Mills at Falls City and Valzets