



### Popular Dutch Colonial House



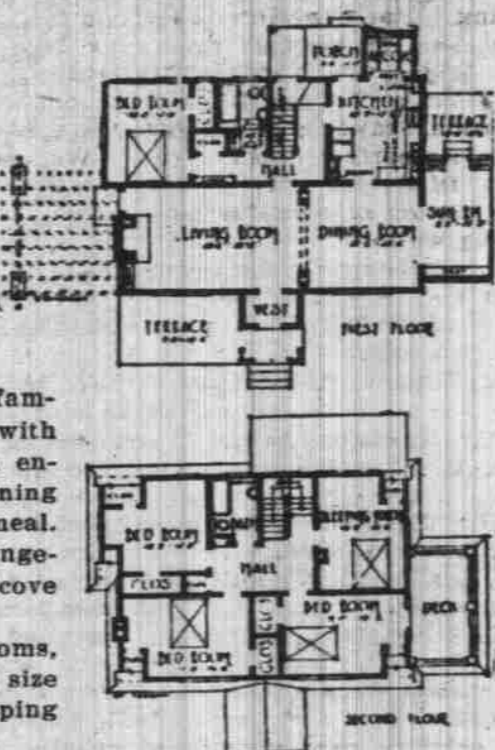
**T**HE Dutch Colonial House is always popular. In this style of house the eaves are usually close to the ground. The cornice line aids in lowering the appearance of house and gives it that cozy, low appearance which characterizes the cottages of this period.

Note the proportion of the dormers, which give the second floor nearly as much space as the first.

The green shutters and lattice work at the entrance help to accentuate the style.

The house is admirably laid out for a large family. The kitchen is light and well ventilated with sink and cupboards on the outside wall, with entrance to rear hall and basement. A small dining alcove is provided at the rear for the morning meal. For a house facing south this is an ideal arrangement as the sun room, kitchen and dining alcove admit the morning sun when it is most needed.

The second floor contains three large bedrooms, bath and sleeping porch. The basement is full size of the house. Closets are provided for all sleeping rooms.



Let Us Figure With You on Your New Home

## CHESTER E. LEE Contractor and Builder

1070 N. Twentieth. Near Parrish School. Watch this space for new plans each week

### SALEM BRIDGES IN GOOD SHAPE

All But Two, Damaged by Ice During Winter, Opened for Traffic

City bridges have been repaired and made fairly safe since the damage during the big jam of the past winter. Two exceptions are noted and they are the North Winter and the North Church street bridges. These are to be repaired at a later date, due to some changes that are necessary in the structure. The other bridges which suffered damages have been repaired and are in use at the present time.

Already the scarifier is busy on some of the gravel streets of the city and getting the smoothed up for summer use. Most of this work is being done in the north part of the city.

Among other things which the street committee is accomplishing is the building of stone retaining walls on North Fifteenth and Thirteenth. A big rock wall is being placed on Fifth where it joins Church. Preparations are underway to place a sidewalk upon the retaining walk to make the street safe for pedestrians. A retaining wall is being built on Thirteenth at the Mill stream in order to care for the heavy overflow in the winter time.

The paving plans of the street commissioner are being carried out as rapidly as possible. The wet weather is delaying the work somewhat, but plans are ready for a full opening. If the street committee approves the bids for the new concrete mixer, about twice as much work can be turned out as at the present time.

When man yearns for a fair chance he means a chance to fasten at the expense of others.

### YMCA BUILDING PLANS UNDER WAY

Word Received From Architect These Will be Completed April 23

A special delivery to Paul Wallace, chairman of the building committee of the YMCA, announced that the plans would be completed by April 22. The news we sent here by George Whitehouse, of Portland, architect, who has been employed on the plans.

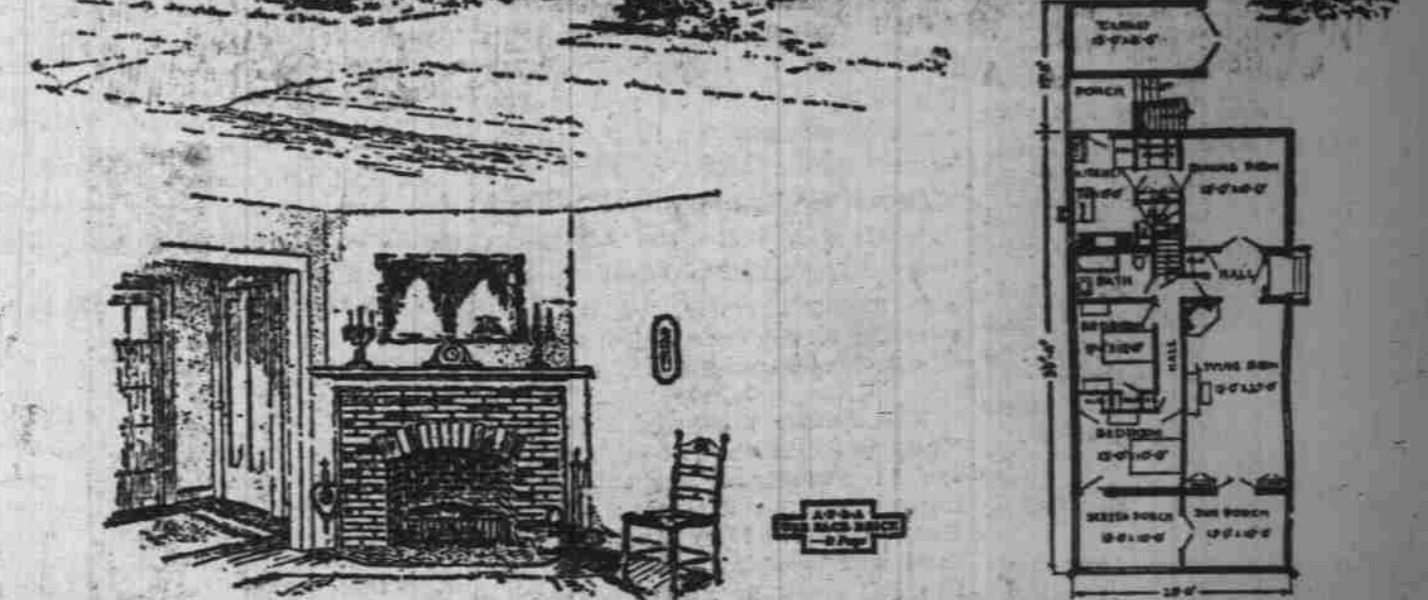
The finished plans were promised a month ago, but due to the illness of the architect, the work was not completed. However, the plans are being rushed as much as the quality of the work will permit. Five men are employed at the present time, and it is expected that the work will be completed soon.

When the bids arrive in the hands of the building committee, bids will be called for. It will be necessary to wait until ten days or two weeks for the contractors to secure their figures, and following this the contracts will be awarded.

From all indications the new building is to be completed within six months after it is started. The building committee is to cooperate on every hand to secure the completion of the building at the earliest possible moment.

Part of the construction work has been completed. The basement of the new building has been excavated and sewer work will be completed soon. This arrangement allows immediate construction to begin on the new YMCA building.

### A Bungalow, Comfortable and Homelike in Appearance



Five-Room House No. 527

Designed for American Face Brick Association

**S**IMPLE roof lines and window arrangement give a cozy effect to this design. Note the effective use of horizontal bands in the brickwork. Common bond with the joints raked out would be quite appropriate.

As shown above, this house may be placed on a narrow lot with the driveway and entrance at the side, while this design is exceptionally well planned for a corner lot. In the latter case, the garage driveway may run directly to the street instead of past the front entrance.

The garage is separate from the house, but connected by the back porch over which the main roof extends. It is readily accessible and heated from the house.

Simplicity of construction, which makes for economy, has not been overlooked. The plan is rectangular, without breaks, and has one straight bearing wall through the middle. The entire space, except under the porches, is excavated for a basement which contains the laundry, vegetable cellar, heating plant, and fuel bins.

The arrangement of the first floor is unusual. Note the extent of space from dining room to sun porch, which may be thrown together if desired, or closed off by French doors. The porch is here shown divided, one portion of which may be used as a sleeping porch if desired.

The bedrooms and bath are connected with the entrance hall by a second hall. The stairs to the second floor are convenient to the entrance. The breakfast room and serving pantry are combined.

The kitchen is well arranged and has three windows. Cabinets in the breakfast room and kitchen take the place of the pantry. There is a garbage incinerator in connection with the kitchen chimney. An inside stairway from the kitchen leads to the basement. The outside stairway is placed under the back porch.

### GARDEN TOOLS IN QUANTITIES SOLD

Heavy Demand on Hardware Stores; Fishing Tackle is Moving

Garden hoes, rakes, and gardening tools are finding a real sale, according to the reports from local hardware stores. It is stated that an extensive demand has been made by Salem citizens for the old standby of spring fever.

Not only has the demand been for rakes and hoes and shovels, but wheelbarrows and special gardening tools have been bought. One can see pronged rakes, square pointed spades, and other appliances being packed to homes for use.

Sporting goods stores report a thriving trade in fishing tackle and other accessories to the fisherman. The closeness of the opening season is responsible for the interest shown in this matter.

Germany, arming in secret, is not a menace. There is no secret way to make Uncle Sam finance her.

### NEARLY THOUSAND WHITE TO ONE BLACK

There Are Only 31 Negroes in Salem, 12 Being Pupils in Public Schools

"Had you noticed how surprisingly free from other races than the white race Salem is?" An investigation being made by the reporter discloses the fact that, out of a population of over 22,000, there are only 31 negroes. In other words, the ratio of white to black is approximately 1,000 to 1.

Not only are negroes very few in Salem, but those that are here are of a high type; all of them exemplifying a high standard of American citizenship. For example, out of the 31, six maintain homes. In these six homes are 22 of the total 31. Of these original 22, 12 are children attending the public schools of Salem. As far as can be ascertained, by the reporter, all of the adult male negroes are employed at different places in the city.

In the near future, further investigation will be made to discover what other races are represented in Salem, and to just what extent they form a part of that population, which has given Salem an enviable reputation as a fine place in which to establish a home.

### WORK ON SCHOOL BEGINS THIS WEEK

Addition to Engine Field Building at Silverton Will be Done Soon

SILVERTON, Ore., April 11.—(Special).—Work on the new addition to the Engine Field school building will begin on April 15. Much grief is expressed by Silverton tennis players that the old cement court built by the class of 1917 will be removed at this time. It is the only public tennis court at Silverton and has furnished

a great deal of amusement for tennis fans. During the past week the court has been full at all hours and a line of other players waiting their turn. The members of the class which built the court Paul Wray, Leta Janz Adams, Ventia Moores Fry, Helela Wolcott Beagle, Edwin Durno, Emma Larson, Elsie Solberg, Rhodin Cooley, Rachel Cooke, Nicolie Nelson, Clara Larson, Clarence Sheeder, Eulice Knauf, Meva Blackerby, Eva Digerness, Alvin Hobart, Mable Dahl, Helen Bonser, Vada DeGuire Carson, Al-

fred Adams, Adath Kerr Davis, Quincy Davis, Victor Madsen, Ethel Haggerty, Walter Toft, Edna Havensick Dickman, Elizabeth Lacy, Oscar Loe.

A new court, back of the Washington Irving building, is now underway but will not be completed for sometime. The court is being built by high school organizations. As to whether it will be cement or asphalt is not yet known.

Her Heck says: "The feller with educated bowels, in the long run, will beat the feller with educated brains."

fred Adams, Adath Kerr Davis, Quincy Davis, Victor Madsen, Ethel Haggerty, Walter Toft, Edna Havensick Dickman, Elizabeth Lacy, Oscar Loe.

A new court, back of the Washington Irving building, is now underway but will not be completed for sometime. The court is being built by high school organizations. As to whether it will be cement or asphalt is not yet known.

Her Heck says: "The feller with educated bowels, in the long run, will beat the feller with educated brains."

# Building Materials

If you are going to build, it will pay you to see us for

- Euroloid & Certain-teed Roofings
- Deadening Felts
- Asphalt Sheeting
- Building Papers
- Perfection Plaster Board
- Fabco Paints & Oils
- Fabco Varnishes & Stains
- Peerless Built-ins
- Malle Mail Boxes
- Cedar Shingles
- Standard Gypsum Plaster
- Waterproofing for Cement
- Mantle Brick
- Mantle Tile
- Metal Lath, Corner Band
- Marshall & Stearn Wall Beds
- Richardson's Mortar Colors
- Cabot's Quil—best and sound deadeners
- Duplex Joint Hangers and Beam Caps
- Concrete Hardeners
- Cabot's Shingle Stain
- Euroloid Shingles
- Certain-teed Shingles
- Basement Slat

"Everything for Blasting"



**GABRIEL** Powder and Supply Co.

Phone 728

175 South Commercial

## OWN YOUR HOME

"The man who assists his fellow townsman to own his own home is a public benefactor." Every time a renter becomes a home owner the entire community is benefited. We have the largest and best assorted stock of lumber and building materials in Salem. Prompt delivery and a square deal to all.

We have the following Special price on a limited amount in our "Basement Store." 2x4 6, 8 and 10 common 2x6 T. & G. decking \$10.00 per thousand. Look these over and see if you can use some of it. Also will continue our special price on Special Rustic and other materials as per our last ad. We will include in the sale six thousand feet 1x4, No. 3 V. G. flooring, 4 to 9 feet at \$27.00 per thousand. We are headquarters for Kalsomine, Paints and Oils.

### COBBS & MITCHELL CO.

A. B. KELSEY, Manager  
349 South Twelfth St., near Thos. Kay Woolen Mill  
Mills at Falls City and Valzets

### Fashionable Church of Solid Brick



Another striking example of the beauty attained in brick construction is embodied in the \$75,000 Mt. Baker Park Presbyterian Church building, in one of the most beautiful residential districts of Seattle. In appearance the church more than holds its own with the handsome residences in its vicinity.

The beauty of the rough brick walls in variegated shades is enriched by the use of polychrome terra cotta in soft green, blue and cream for cornices, columns and sills. The roof is of clay tiles. The church building will endure, while generations come and go.

For information on the advantages and economy of building with brick and hollow tile, address the undersigned. For ten cents each, we will send "The Home You Can Afford" and "Your Best Home," containing 120 plans of brick homes.

**Pacific Northwest Brick Manufacturers Association**  
906 Lewis Building, Portland  
Bainum Brick & Tile Co., Salem